

WOOD GUARD RAIL REQUIRED

Culv. Station	LT	RT
840+76	24'	—
842+50	26'	—
851+00	24'	—

CABLE GUARD RAIL REQUIRED

Culv. Station	LT	RT
840+76	—	—
842+50	—	—
851+00	—	—

NEW REINFORCED CONCRETE PIPE CULVERTS REQUIRED

STATION	DIAM.	LENS	CONC.	CONC. STEEL
840+76	24"	36'	3.8"	178#
842+50	24"	40'	3.5"	39#
851+00	18"	40'	2.7"	144#
851+00	10"	44'	1.3"	153#

DEEP INLET TAPS REQUIRED

Culv. Sta.	CONC.	STEEL
846+50	0.2 CY	47#
851+00	0.2 "	47#

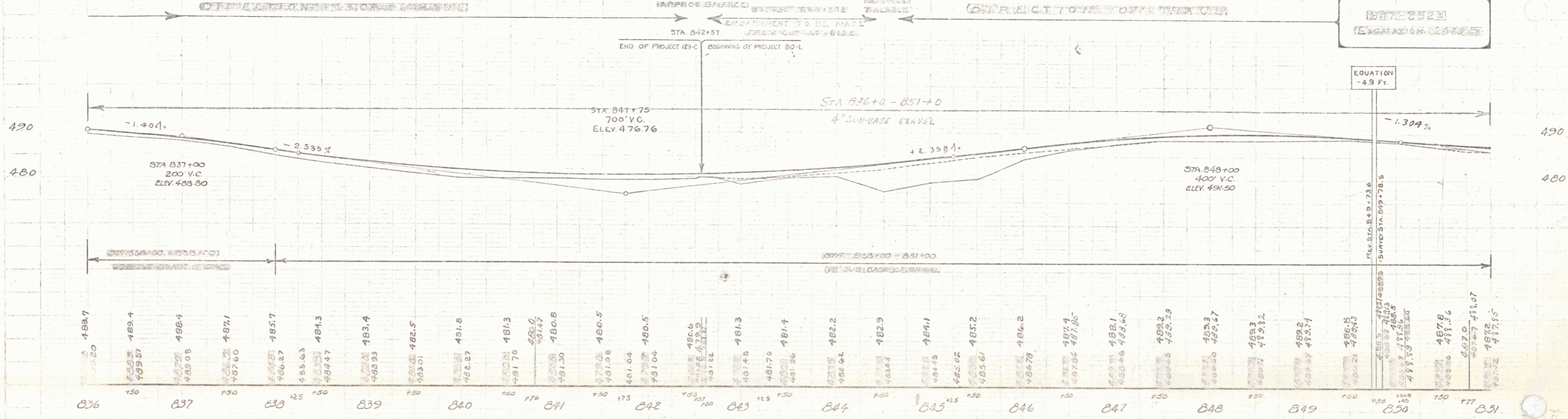
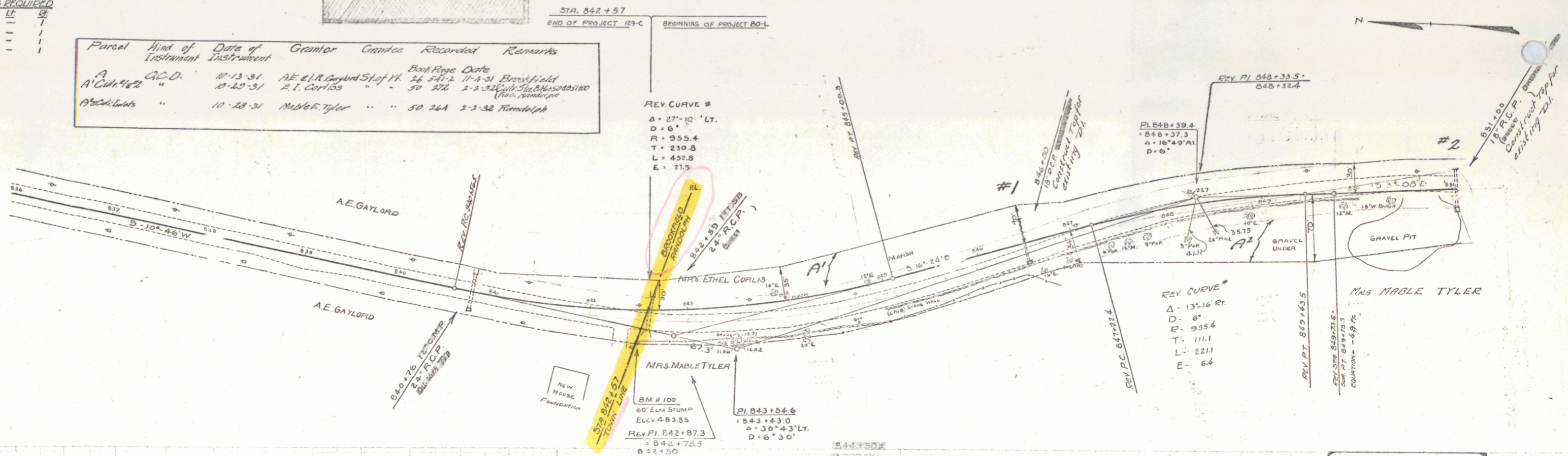
FED. ROAD DIST. NO.	STATE	FED. AID PROJ. NO.	FISCAL YEAR	SHEET NO.	TOTAL SHEETS
129C	MD	751	75	40	141

GUIDE POSTS REQUIRED

Culv. Station	LT	RT
840+00	—	—
840+76	—	—
842+50	—	—
851+00	—	—

Parcel

Kind of Instrument	Date of Instrument	Grantor	Grantee	Recorded	Remarks
A.C.D.	10-13-31	A.E. Gaylord	St. of Md.	24 372 2	11-4-31, Brookfield
"	10-20-31	R.I. Corliss	"	30 272	2-2-32, Culv. Sta. 842+50
"	10-28-31	Mable E. Tyler	"	50 264	2-2-32, Fenwick



B.M. No. 100 SPIKE IN 60" ELM STUMP 23 FT. STA. 842+4.8 ELEV. 483.85

SERIES F No. 129C+00-L
SHEET 40 OF 141