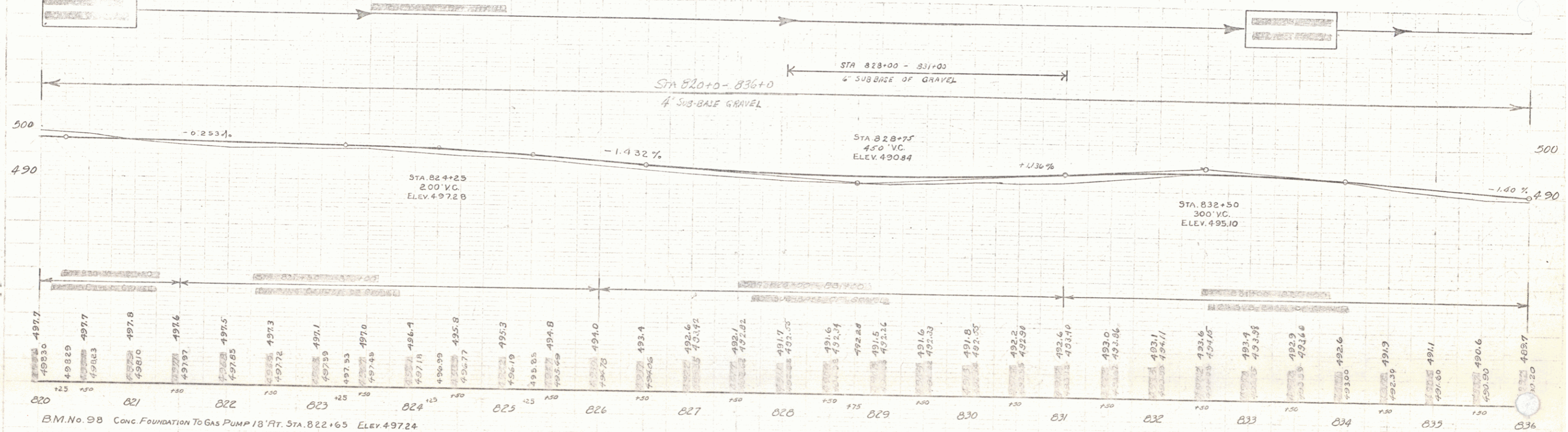
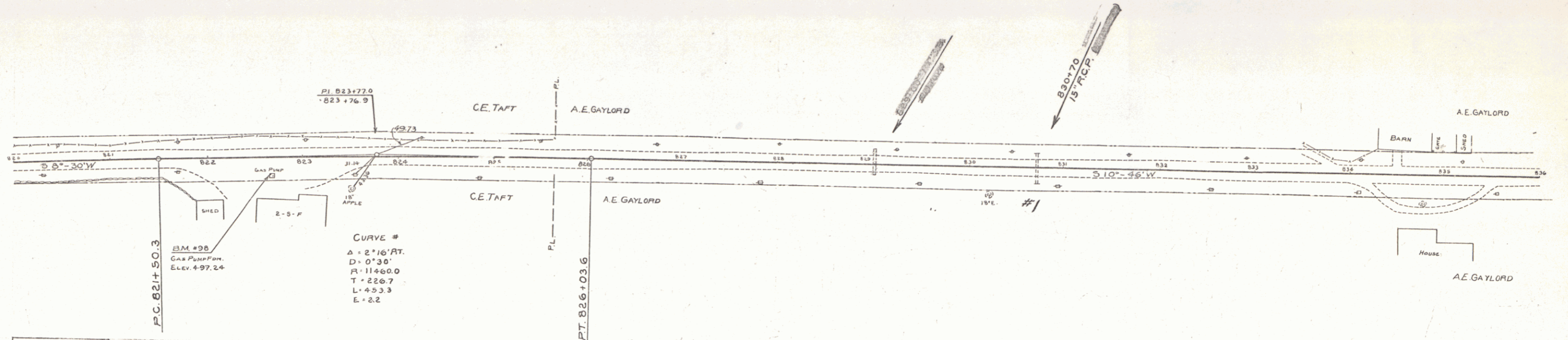


GUIDE DATA REQUIRED
 Curve Station 1 2
 820+70 1 7

NEW REIN. CONC. PIPE CULVERTS REQUIRED
 STATION-DIAM. LENG. CONC. D. CONC. SIZE
 820+70-75 32' 3.0' 18" 3.0' 18"

Parted Kind of Date of Greater Grantee Recorded Remarks
 Instrument Instrument Brookfield
 C.M.R. G.C.D. 10-13-31 A.E. & R. Gaylord Sta. of H. 26 347-2 11-4-31 C.M.R. Sta. 820+70

129-C 1931 53 141



820	125	498.30	497.7	497.8	497.6	497.5	497.3	497.1	497.0	496.7	495.8	495.3	494.8	494.0	493.4	492.6	491.6	491.5	491.6	491.8	492.2	492.6	493.0	493.4	493.6	493.4	492.9	492.6	491.9	491.1	490.6	489.7
821	125	498.29	497.7	497.8	497.6	497.5	497.3	497.1	497.0	496.7	495.8	495.3	494.8	494.0	493.4	492.6	491.6	491.5	491.6	491.8	492.2	492.6	493.0	493.4	493.6	493.4	492.9	492.6	491.9	491.1	490.6	489.7
822	125	498.29	497.7	497.8	497.6	497.5	497.3	497.1	497.0	496.7	495.8	495.3	494.8	494.0	493.4	492.6	491.6	491.5	491.6	491.8	492.2	492.6	493.0	493.4	493.6	493.4	492.9	492.6	491.9	491.1	490.6	489.7
823	125	498.29	497.7	497.8	497.6	497.5	497.3	497.1	497.0	496.7	495.8	495.3	494.8	494.0	493.4	492.6	491.6	491.5	491.6	491.8	492.2	492.6	493.0	493.4	493.6	493.4	492.9	492.6	491.9	491.1	490.6	489.7
824	125	498.29	497.7	497.8	497.6	497.5	497.3	497.1	497.0	496.7	495.8	495.3	494.8	494.0	493.4	492.6	491.6	491.5	491.6	491.8	492.2	492.6	493.0	493.4	493.6	493.4	492.9	492.6	491.9	491.1	490.6	489.7
825	125	498.29	497.7	497.8	497.6	497.5	497.3	497.1	497.0	496.7	495.8	495.3	494.8	494.0	493.4	492.6	491.6	491.5	491.6	491.8	492.2	492.6	493.0	493.4	493.6	493.4	492.9	492.6	491.9	491.1	490.6	489.7
826	125	498.29	497.7	497.8	497.6	497.5	497.3	497.1	497.0	496.7	495.8	495.3	494.8	494.0	493.4	492.6	491.6	491.5	491.6	491.8	492.2	492.6	493.0	493.4	493.6	493.4	492.9	492.6	491.9	491.1	490.6	489.7
827	125	498.29	497.7	497.8	497.6	497.5	497.3	497.1	497.0	496.7	495.8	495.3	494.8	494.0	493.4	492.6	491.6	491.5	491.6	491.8	492.2	492.6	493.0	493.4	493.6	493.4	492.9	492.6	491.9	491.1	490.6	489.7
828	125	498.29	497.7	497.8	497.6	497.5	497.3	497.1	497.0	496.7	495.8	495.3	494.8	494.0	493.4	492.6	491.6	491.5	491.6	491.8	492.2	492.6	493.0	493.4	493.6	493.4	492.9	492.6	491.9	491.1	490.6	489.7
829	125	498.29	497.7	497.8	497.6	497.5	497.3	497.1	497.0	496.7	495.8	495.3	494.8	494.0	493.4	492.6	491.6	491.5	491.6	491.8	492.2	492.6	493.0	493.4	493.6	493.4	492.9	492.6	491.9	491.1	490.6	489.7
830	125	498.29	497.7	497.8	497.6	497.5	497.3	497.1	497.0	496.7	495.8	495.3	494.8	494.0	493.4	492.6	491.6	491.5	491.6	491.8	492.2	492.6	493.0	493.4	493.6	493.4	492.9	492.6	491.9	491.1	490.6	489.7
831	125	498.29	497.7	497.8	497.6	497.5	497.3	497.1	497.0	496.7	495.8	495.3	494.8	494.0	493.4	492.6	491.6	491.5	491.6	491.8	492.2	492.6	493.0	493.4	493.6	493.4	492.9	492.6	491.9	491.1	490.6	489.7
832	125	498.29	497.7	497.8	497.6	497.5	497.3	497.1	497.0	496.7	495.8	495.3	494.8	494.0	493.4	492.6	491.6	491.5	491.6	491.8	492.2	492.6	493.0	493.4	493.6	493.4	492.9	492.6	491.9	491.1	490.6	489.7
833	125	498.29	497.7	497.8	497.6	497.5	497.3	497.1	497.0	496.7	495.8	495.3	494.8	494.0	493.4	492.6	491.6	491.5	491.6	491.8	492.2	492.6	493.0	493.4	493.6	493.4	492.9	492.6	491.9	491.1	490.6	489.7
834	125	498.29	497.7	497.8	497.6	497.5	497.3	497.1	497.0	496.7	495.8	495.3	494.8	494.0	493.4	492.6	491.6	491.5	491.6	491.8	492.2	492.6	493.0	493.4	493.6	493.4	492.9	492.6	491.9	491.1	490.6	489.7
835	125	498.29	497.7	497.8	497.6	497.5	497.3	497.1	497.0	496.7	495.8	495.3	494.8	494.0	493.4	492.6	491.6	491.5	491.6	491.8	492.2	492.6	493.0	493.4	493.6	493.4	492.9	492.6	491.9	491.1	490.6	489.7
836	125	498.29	497.7	497.8	497.6	497.5	497.3	497.1	497.0	496.7	495.8	495.3	494.8	494.0	493.4	492.6	491.6	491.5	491.6	491.8	492.2	492.6	493.0	493.4	493.6	493.4	492.9	492.6	491.9	491.1	490.6	489.7

BM. No. 98 Conc. Foundation To Gas Pump 18' Ft. STA. 822+65 ELEV. 497.24

Series F No. 129-C
 SHEET 50 OF 141