

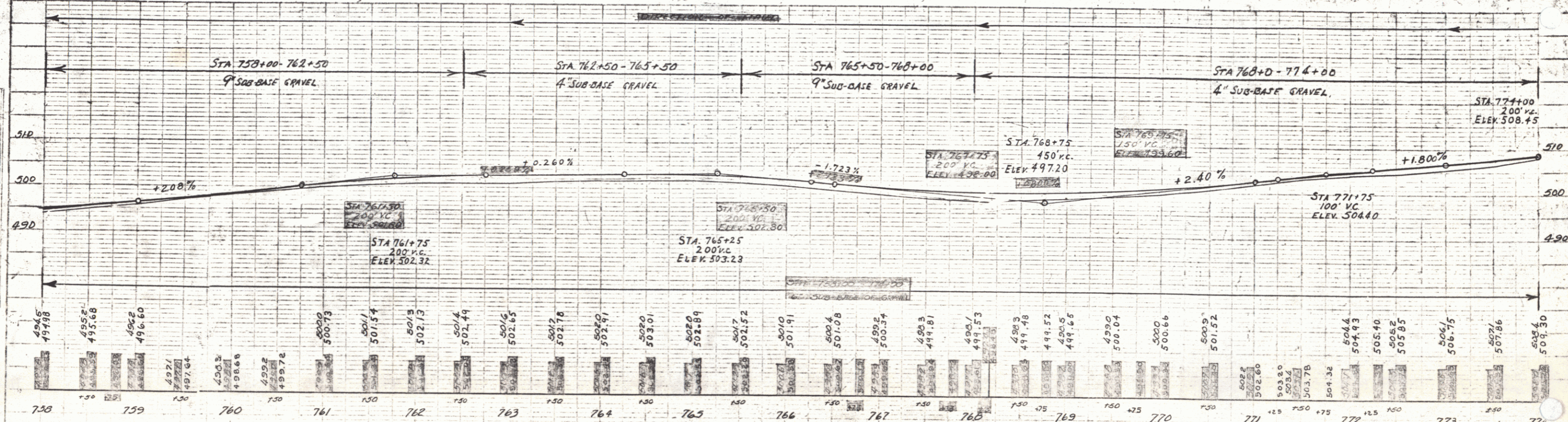
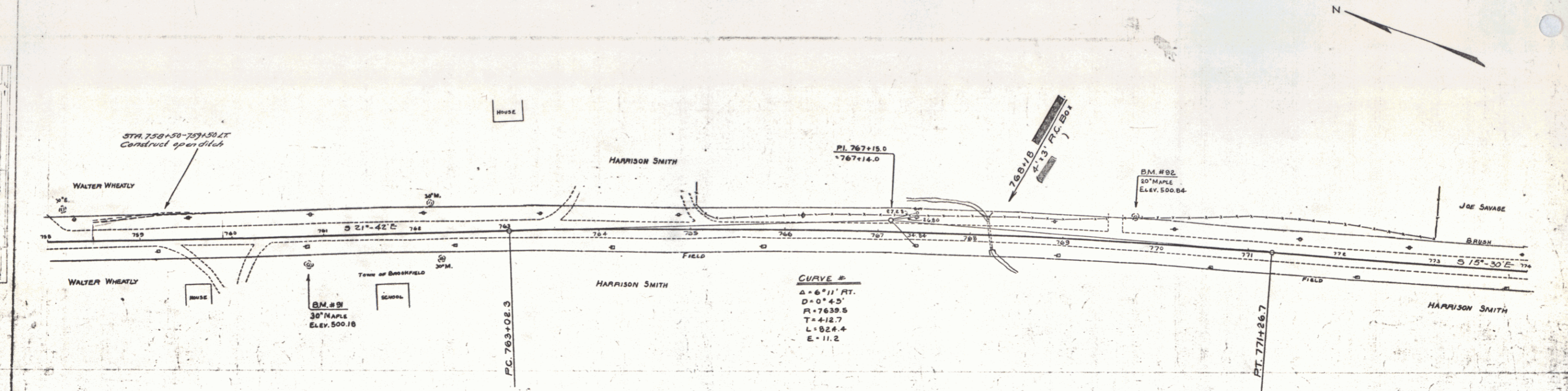
WOOD GUARD RAIL REQUIRED
 CON. 30'x42" Lx 12"
 760+10 16 24

NEW HEAVY CONC. BOX CULVERTS REQUIRED
 STATION 768+15
 SIZE 4'x3' 7.5'x13.0'x5'

FED. ROAD DIST. NO. 129-C 129-C 129-C 129-C 129-C
 SHEET NO. 141

PLAN
 DATE 10/1/50
 DRAWN BY W. W. WILSON
 CHECKED BY J. W. WILSON

SECTION
 DATE 10/1/50
 DRAWN BY W. W. WILSON
 CHECKED BY J. W. WILSON



B.M. No. 91 SPIKE IN ROOT OF 30" MAPLE 27' RT. STA 760+81 ELEV 500.18
 B.M. No. 92 SPIKE IN ROOT OF 20" MAPLE 25' LT. STA 769+76 ELEV 500.84

SERIES F No. 129-C
 SHEET 35 OF 141