

WOOD GUARD RAIL REQUIRED	STATION	LT	RT
	697+22	24'	24'
	703+22	24'	24'
	707+25	24'	24'

GUIDE POSTS OF WOOD REQUIRED	STATION	LT	RT
	697+22	1	1
	703+22	1	1
	707+25	1	1

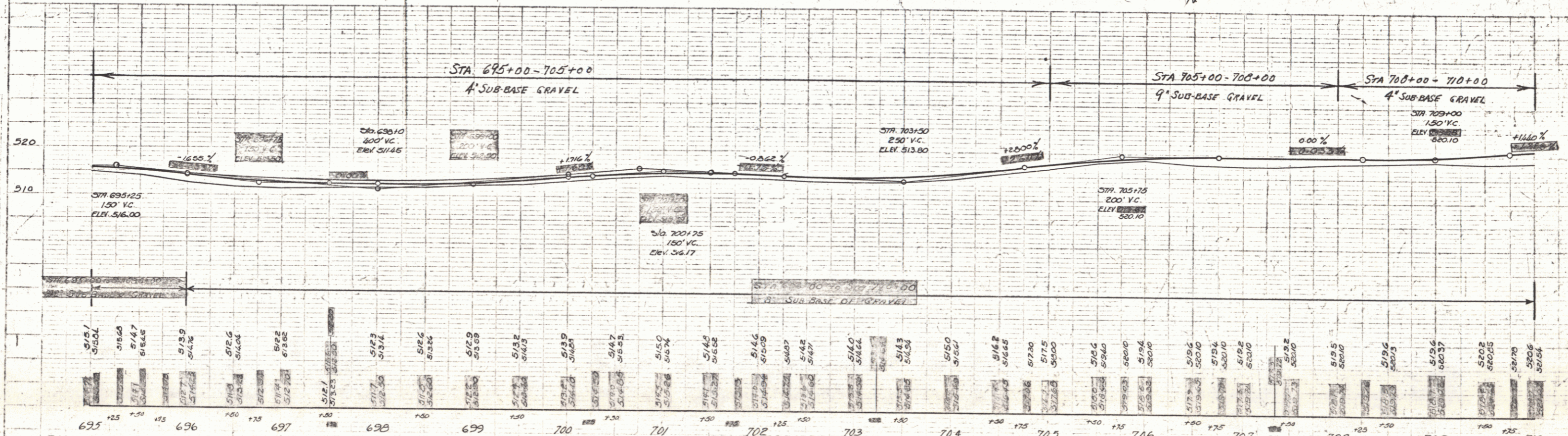
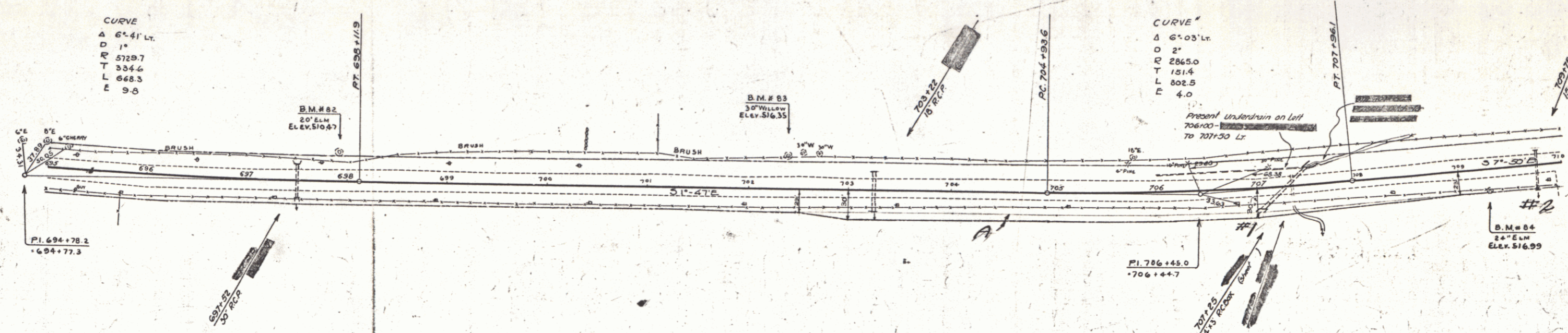
NEW ROUND PIPE COVERTS REQUIRED	STATION	CHAM	LEN	CONE	CONC	STEEL
	697+22	30"	36'	3.84	-	74 lbs
	703+22	18"	40'	-	5.4	24 lbs
	707+25	15"	40'	-	3.84	24 lbs

NEW ROUND PIPE COVERTS REQUIRED	STATION	CHAM	LEN	CONE	CONC	STEEL
	707+25	4.23	17.5	-	-	1500

STANDARD UNDERPAVEMENT WITH 12" CLAY PIPE REQUIRED	STATION	LEN	WIDTH
	707+33 - 707+51	18'	18"

FED. ROAD DIST. NO.	STATE	F.D. AND P.C. NO.	PLAN NO.	SHEET NO.	TOTAL SHEETS
9	VT	129-C	1991	31	141

Parcel
 Kind of Instrument
 Date of Instrument
 Grantor
 Grantee
 Recorded Book Page Date
 Remarks
 AC 11-18-31 G.C.D. 9-24-31 Colvin Jackson Est. St. of H. 26 84-11-4-31 Cult. Sta. 707+25 & 707+25



B.M. No. 82 SPIKE IN ROOT OF 20" ELM 25' LT. STA. 697+92 ELEV. 510.47
 B.M. No. 83 SPIKE IN ROOT OF 30" WILLOW 30' LT. STA. 702+39 ELEV. 516.35
 B.M. No. 84 SPIKE IN ROOT OF 24" ELM 19' RT. STA. 709+28 ELEV. 516.99

SERIES F NO. 129-C
 SHEET 31 OF 141