

NEW	CONC PIPE CULVERTS REQUIRED
STATION	LENG CONC PIPE CORR. STEEL
880+20	44 97 g. 170' 00"

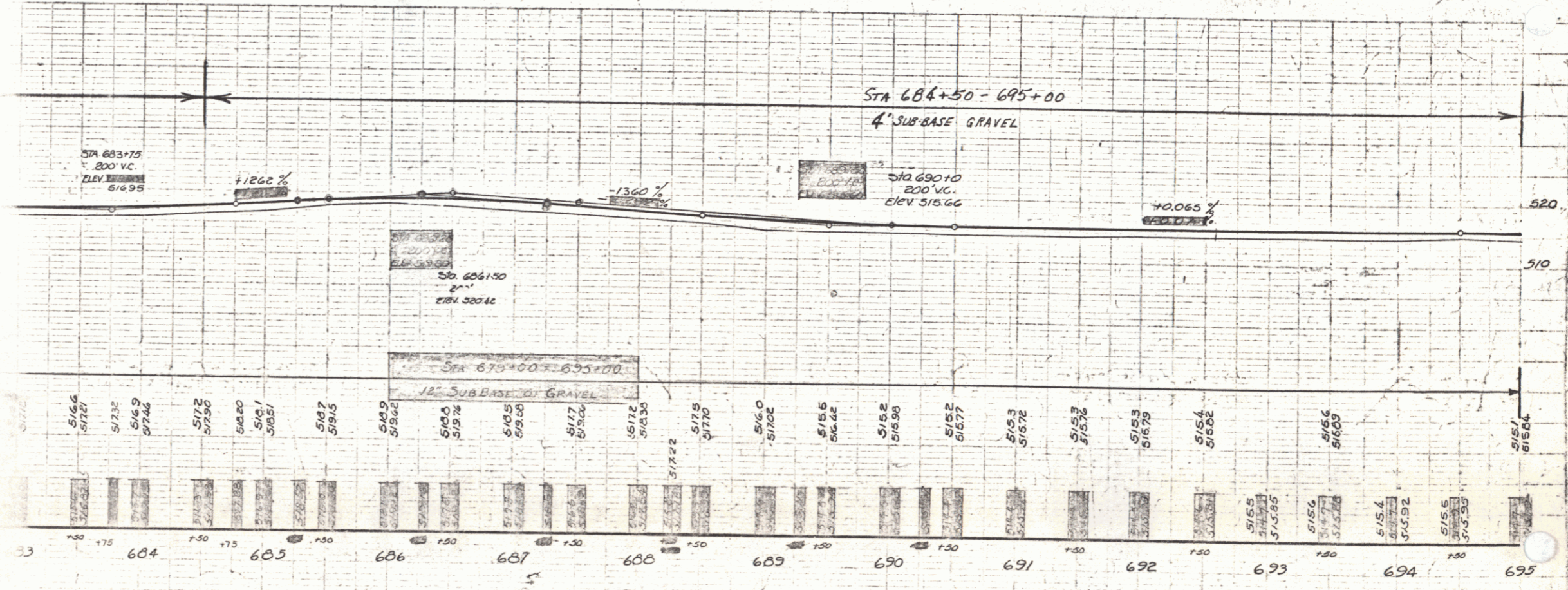
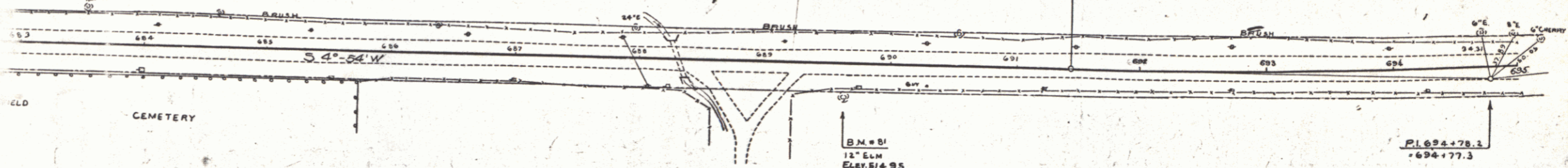
NEW	STEEL CORR BOX CULVERTS REQUIRED
STATION	SIZE CONC PIPE CORR. STEEL
680+20	4'x5' 17.3 cu. 1300 lbs

FED. ROAD DIST. NO.	STATE	FED. AID LOCAL	SHEET NO.	TOTAL SHEETS
9	VT	129-C-1931	30	141



CURVE
 A 6441' Lx
 D 1"
 R 5729.7
 T 334.6
 L 668.3
 E 9.8

POOR ORIGINAL COPY



SERIES F. NO. 129-C
 SHEET 30 OF 141