

CABLE GUARD RAIL REQUIRED

30' Dia. LxR	Constant	12' Ht.
65140-65214 L	48' 40'	0.8'
65160-65214 R	48' 40'	0.8'

GUIDE POSTS OF WOOD REQUIRED

STATION	RT	LT
460+92	1	1

NEW REINFC CONC. PIPE CULVERTS REQUIRED

STATION	DIMS	LEN	CONC.	CONC.	STEEL	DI	GRATE
65210	10'	60'	12"	12"	12"	12"	12"
65210-65210	10'	72'	12"	12"	12"	12"	12"
65210-65210	10'	72'	12"	12"	12"	12"	12"
65210-65210	10'	72'	12"	12"	12"	12"	12"

DRAINAGE STRUCTURE REPAIRS

300' 651+90 Extensions to Present 18"x5' Bridge

Conc. A ... 30' 5"

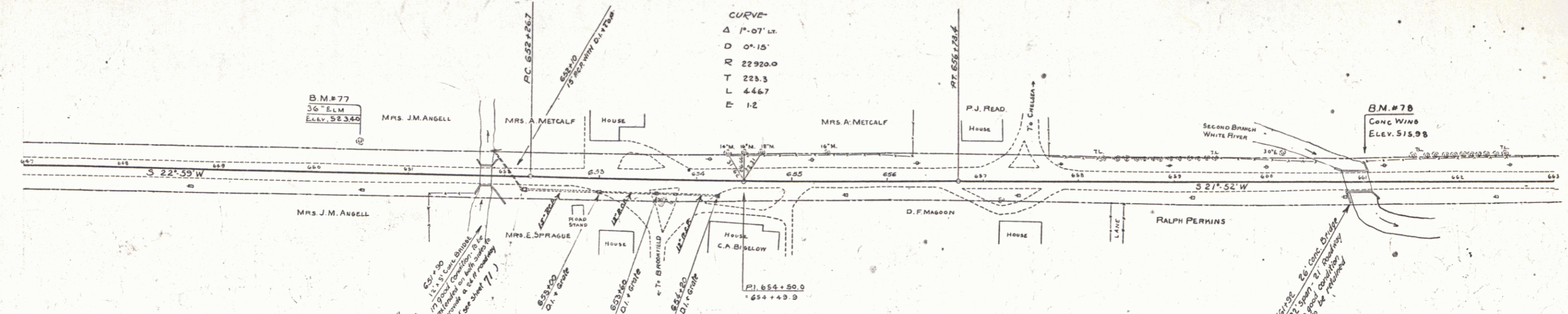
Conc. C ... 9' 5"

Steel ... 2116 lbs.

Struct. Etc. 4.95%

Steel for Extension is on hand. On Project

DIST. NO.	STATE	PROJECT	SHEET	TOTAL SHEETS
9	VT	129-C	28	141



CURVE

Δ 1°-07' LT.

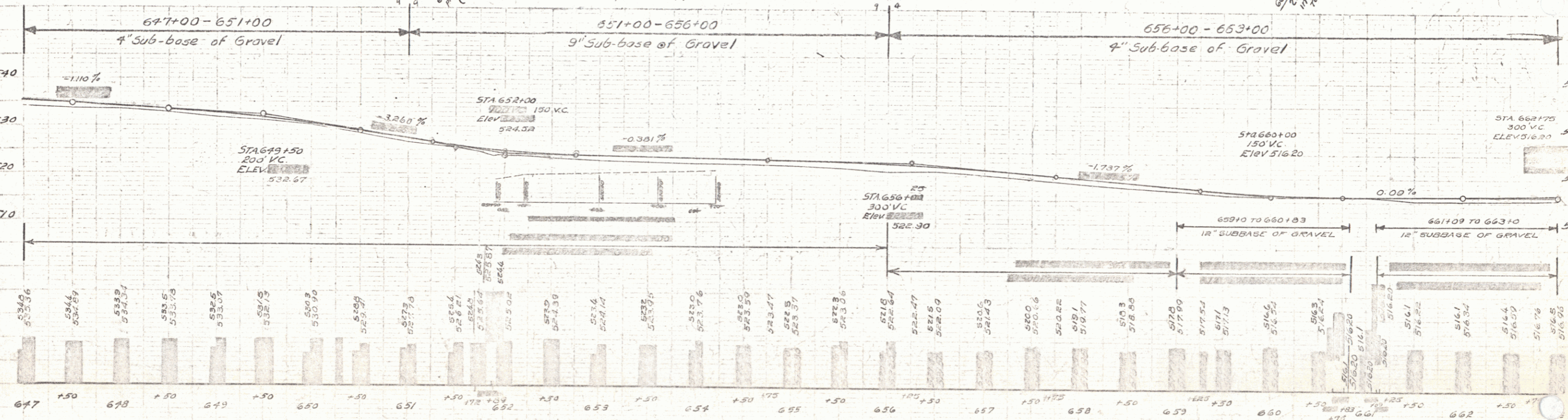
D 0°-15'

R 22920.0

T 228.3

L 446.7

E 1-2



B.M. No. 77 SPIKE IN FOOT OF 36" ELM 29' LT. STA. 650+47 ELEV. 523.40

B.M. No. 78 TOP 3E. CONC. WING AT BRIDGE LT. STA. 661+03 ELEV. 518.93

SERIES F No. 129-C

SHEET 28 OF 141