

WOOD GUARD RAIL REQUIRED

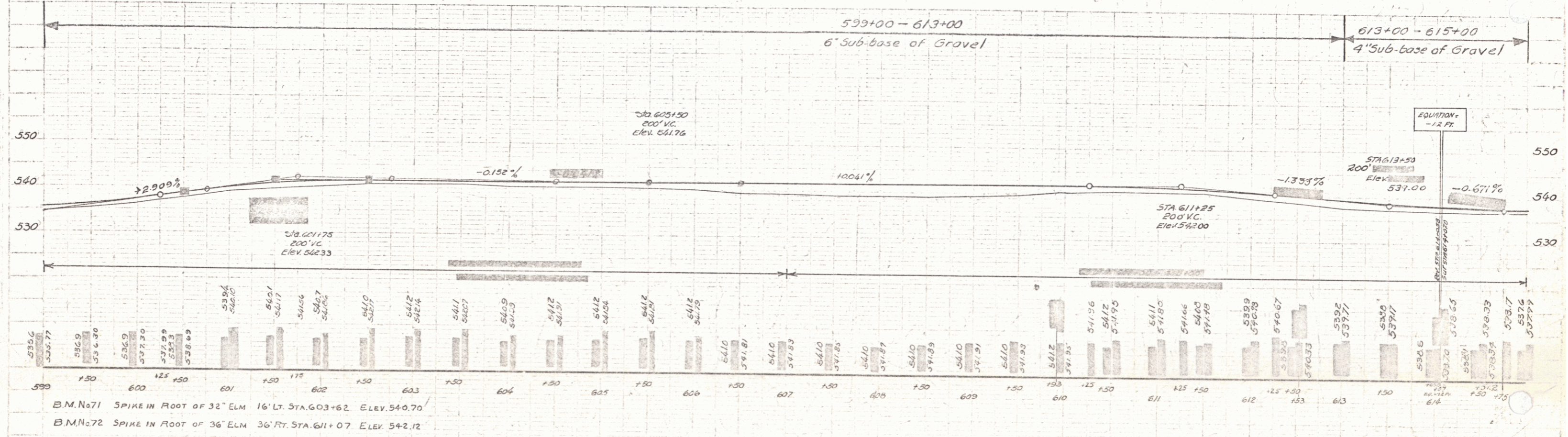
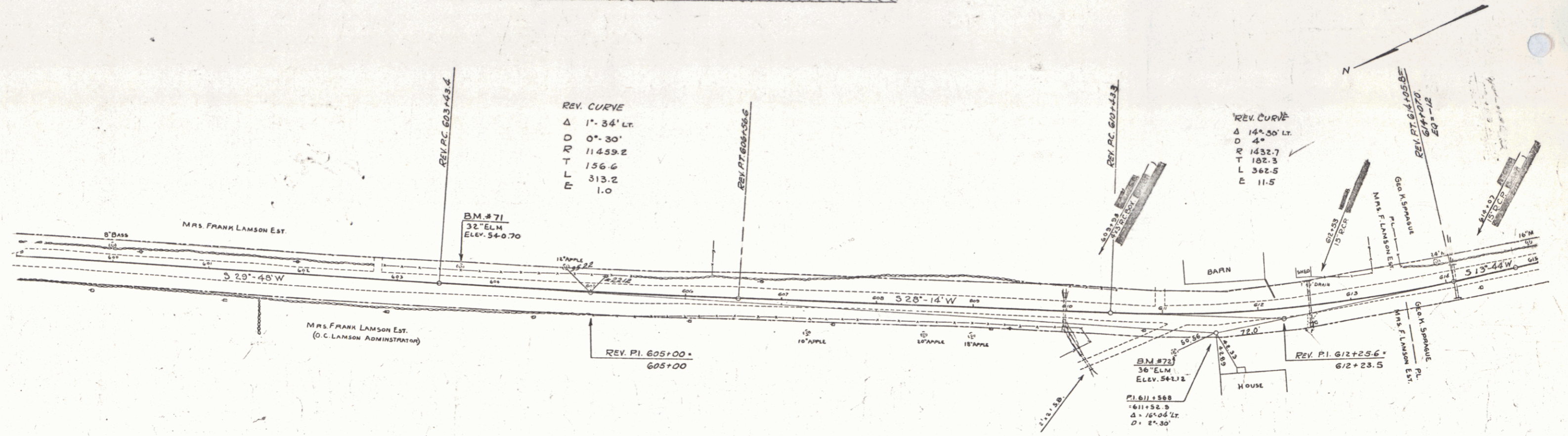
City Station	LT	RT
609+53	28'	28'

GUIDE POSTS OF WOOD REQUIRED

STATION	RT	LT
612+53	1	1
614+07	1	1

STATION	GRADE	CONC. BOX	CONC. A	STEEL
609+53	1.0	17.5	18.0	18.0
614+07	1.0	17.5	18.0	18.0

FED. ROAD DIST. NO.	STATE	FED. AID PROJ. NO.	FISCAL YEAR	SHEET NO.	TOTAL SHEETS
9	VI.	129-C	1931	25	141



BM No 71 SPIKE IN ROOT OF 32" ELM 16' LT. STA. 603+62 ELEV. 54-0.70
 BM No 72 SPIKE IN ROOT OF 36" ELM 36' RT. STA. 611+07 ELEV. 54-2.12