

WOOD GUARD RAIL REQUIRED		CABLE GUARD RAIL REQUIRED	
Sta.	Length	Sta.	Length
500+13	24'	533+26	40'
502+00	24'		
503+44	24'		
503+60	24'		

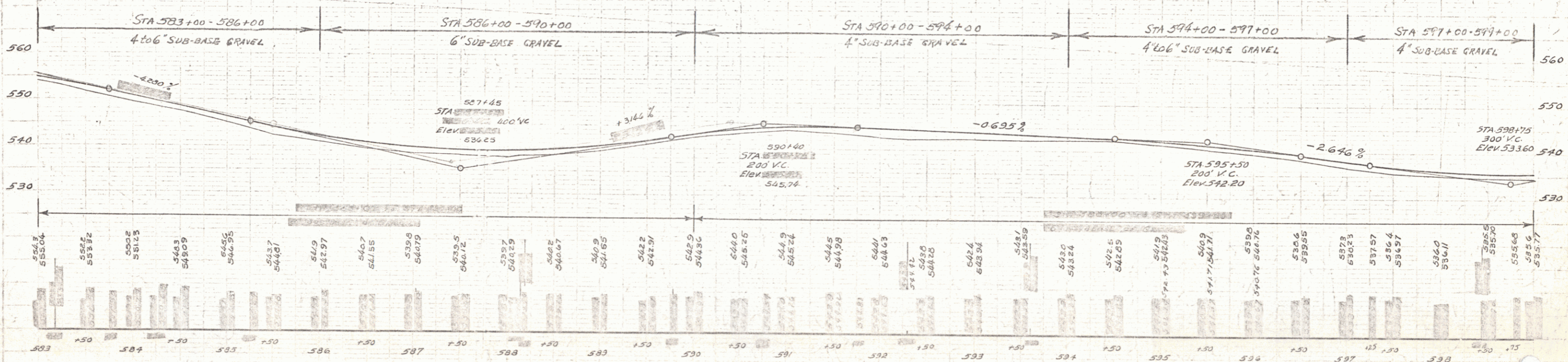
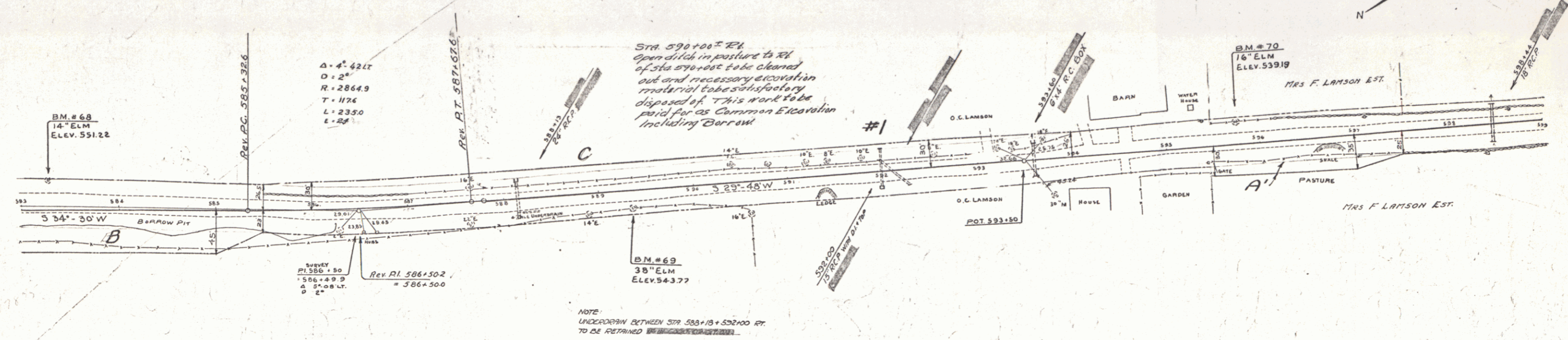
Sta.	Length
500+13	7
502+00	1
503+44	1

Material	Quantity
2" x 4" x 8" PLANK	1200
2" x 6" x 8" PLANK	1200
2" x 8" x 8" PLANK	1200
2" x 10" x 8" PLANK	1200
2" x 12" x 8" PLANK	1200

Material	Quantity
2" x 4" x 8" PLANK	1200
2" x 6" x 8" PLANK	1200
2" x 8" x 8" PLANK	1200
2" x 10" x 8" PLANK	1200
2" x 12" x 8" PLANK	1200

Parcel #	Kind of Instrument	Date of Instrument	Grantor	Grantee	Received Date	Remarks
19	C.C.D.	9-5-31	O.C. Lamson	Mrs. F. Lamson Est.	11-4-31	Cont. Sta. 532+00
19	C.C.D.	9-5-31	Mrs. Lamson Est.	Mrs. Lamson Est.	11-4-31	

129-C 1931 24 141



B.M. No. 68 SPIKE IN FOOT OF 14" ELM 24' LT. STA. 583+27 ELEV. 551.22
 B.M. No. 69 SPIKE IN FOOT OF 38" ELM 17' RT. STA. 589+36 ELEV. 543.77
 B.M. No. 70 SPIKE IN FOOT OF 16" ELM 20' LT. STA. 595+77 ELEV. 539.19

SERIES F No. 129C SHEET 24 OF 141