

CABLE GUARD RAIL REQUIRED
 340-342 Loc. E Long. Constant 1175' 120' 1295'
 533+00-537+00 L. 144' 40' 181'

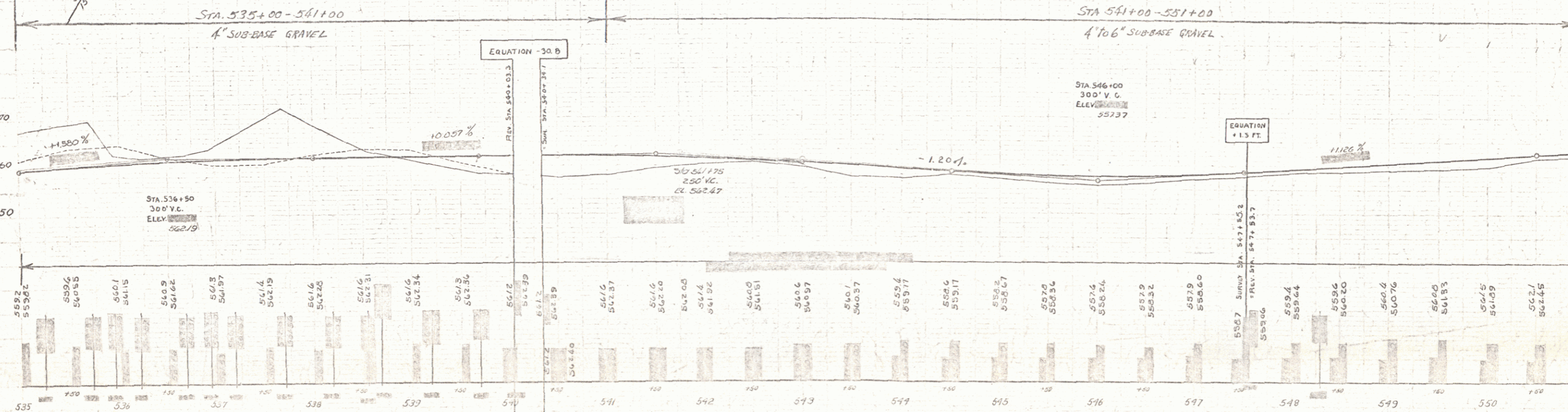
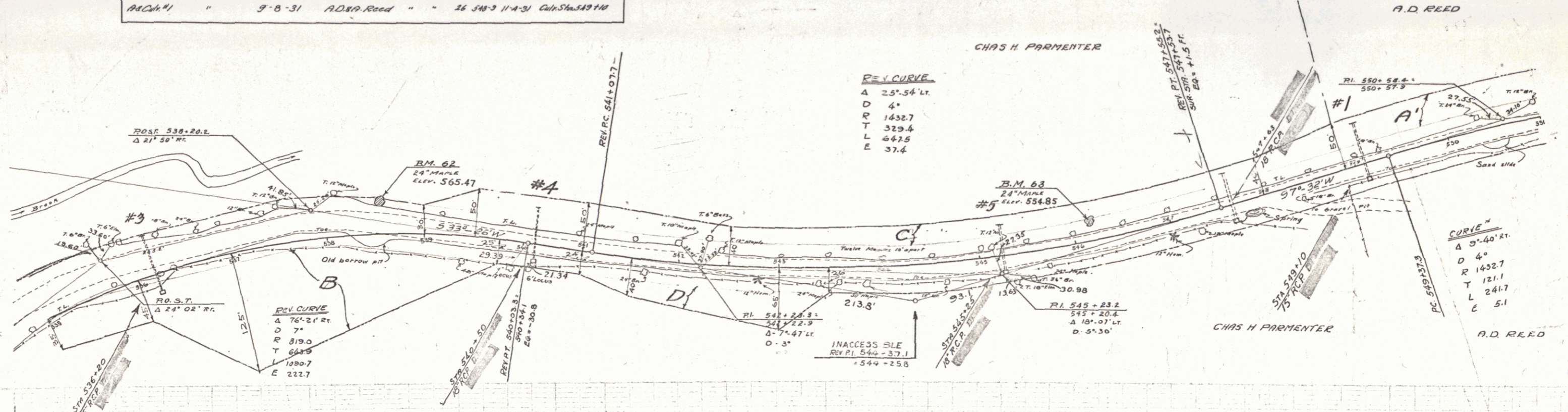
QUICK POSTS REQUIRED

Sta.	LT.	RT.
536+20	-	1
540+50	-	1
545+25	-	1
547+63	-	1
549+10	-	1

NEW REIN. OR PIPE CULVERTS REQUIRED

STATION	DIAM.	ENG. CONC. FT.	CONC. STEEL
546+20	15"	62'	1.5 ft. 1.2 ft. 174 lbs.
548+50	18"	56'	1.5 ft. 1.6 ft. 175 lbs.
549+25	18"	48'	1.5 ft. 1.5 ft. 174 lbs.
547+63	15"	52'	1.2 ft. 1.5 ft. 174 lbs.
549+10	15"	60'	1.5 ft. 1.2 ft. 174 lbs.

Parcel No.	Kind of Instrument	Date of Instrument	Grantor	Grantee	Recorded Book/Sheet	Remarks
AC #1	QCD	8-26-31	CH Parmenter	Staff	26 58-11-4-31	Cul. Sta. 536+20, 540+50, 545+25
AC #2	"	9-8-31	A.D. Reed	"	26 58-3-11-4-31	Cul. Sta. 549+10



B.M. No. 62 SPIKE IN KNOT ON 24' MAPLE 18' LT. OF STA 538+87 ELEV. 565.47
 B.M. No. 63 SPIKE IN KNOT ON 24' MAPLE 18' LT. OF STA 546+19 ELEV. 554.85