

WOOD GUARD RAIL REQUIRED

Cur. Station	Lt.	Rt.
504+50	-	24'

CABLE GUARD RAIL REQUIRED

Sta	Sta	Len	Constant	Way	Length
509+60	510+43	L	00'	40'	120
509+77	510+33	R	36'	40'	36
516+20	517+14	L	48'	70'	88

MAIN RINK CONC. PIPE CULVERTS REQUIRED

Station	Clear	Len	Open	to	Open	Steel
504+50	15'	36'	30'	+	33'	
507+05	15'	36'	30'	+	33'	
513+55	15'	44'	1.5'	+	1.5'	174'
516+55	15'	44'	1.5'	+	1.5'	174'

BRIDGE REPAIRS REQUIRED

Sta	Nature	Grade	to	Clear	Width	Struct.	Elev.
510+05	EXTEND	7.5%	14.0'	12.64'	10.0'		

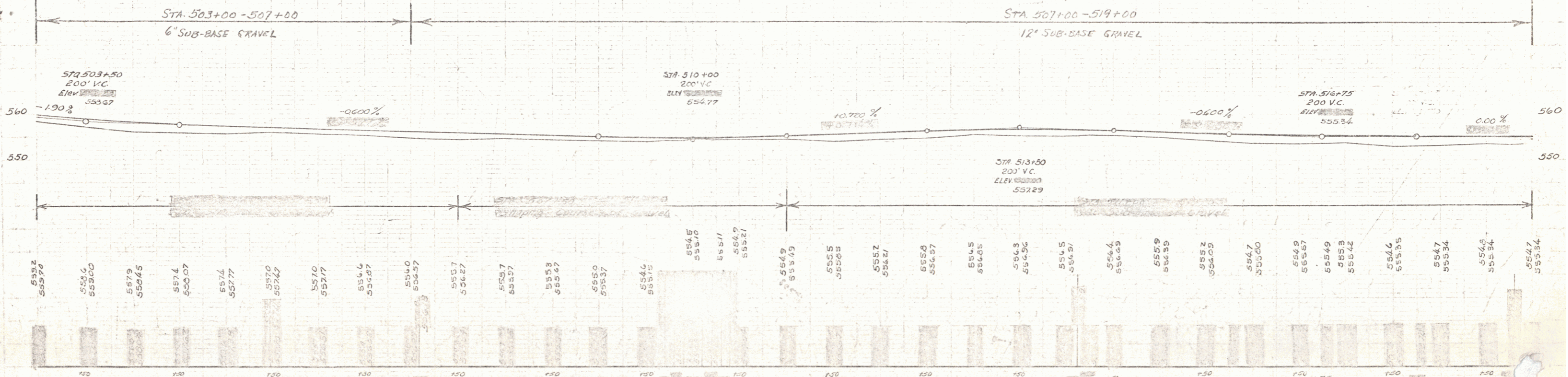
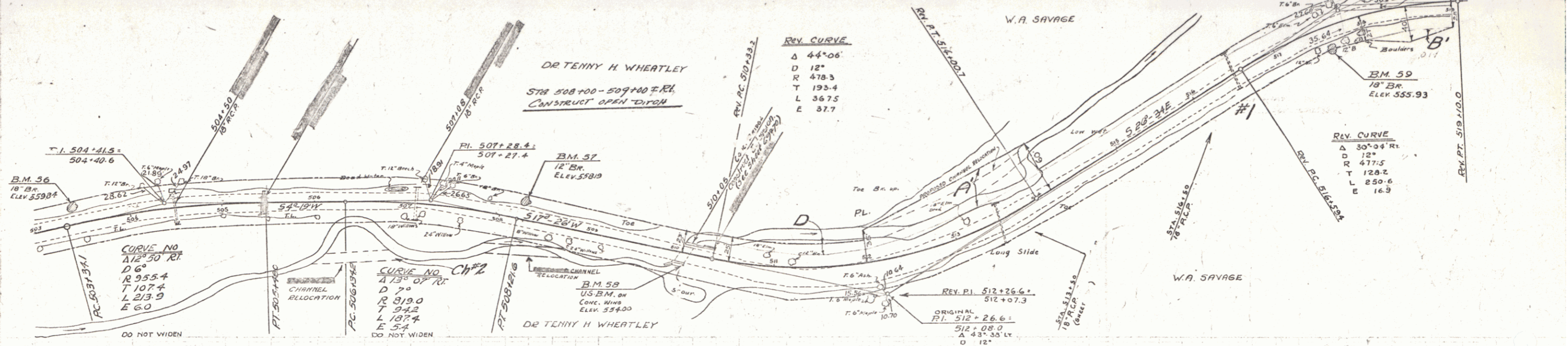
FED. ROAD DIST. NO.	STATE	FILE NO.	SCALE	SHEET NO.	TOTAL SHEETS
3	VT	129C	1931	19	141

GUIDE POSTS REQUIRED

Cur. Station	Lt.	Rt.
504+50	1	1
516+50	1	1
517+08	1	1
513+58	1	1
516+55	1	1

Parcel

Kind of Instrument	Date of Instrument	Grantor	Grantee	Recorded	Remarks
D	8-27-31	T.H. Whartley	Staff H.	15	538.3 11-10-31 Chs. Rd. 30000-40700
Plat	10-1-31	W.A. Savage	Staff A.	26	548.4 11-4-31 Chs. Rd. 30000-40700



B.M. No. 56 SPIKE IN ROOT OF 18" Y. BIRCH 13' LT. OF STA 503+42 ELEV 559.84
 B.M. No. 57 SPIKE IN ROOT OF 18" Y. BIRCH 15' LT. OF STA 508+26 ELEV 558.19
 B.M. No. 58 U.S. B.M. ON CONC. WING 14' RT. OF STA 510+03 - ELEV 554.00 (ELEV U.S. B.M. - 735.40)
 B.M. No. 59 SPIKE IN ROOT OF 24" Y. BIRCH 15' RT. OF STA 517+63 ELEV 555.93

SHEET 19 OF 141