

WOOD GUARD RAIL REQUIRED

Sta	EL	Dist
431+75	24'	-
436+34	24'	-

CABLE GUARD RAIL REQUIRED

Sta	EL	Dist
428+02	42'	40'
430+10	42'	40'

GUIDE POSTS OF WOOD REQUIRED

Sta	EL	Dist
428+32	1'	1'
432+25	1'	1'
437+50	1'	1'

NEW 18" R.C.P. PIPE CHANNELS REQUIRED

Station	Dist	Length	Notes
431+75	15'	14'	120'
432+07	10'	10'	56'
434+00	13'	11'	17'
437+50	12'	15'	12'

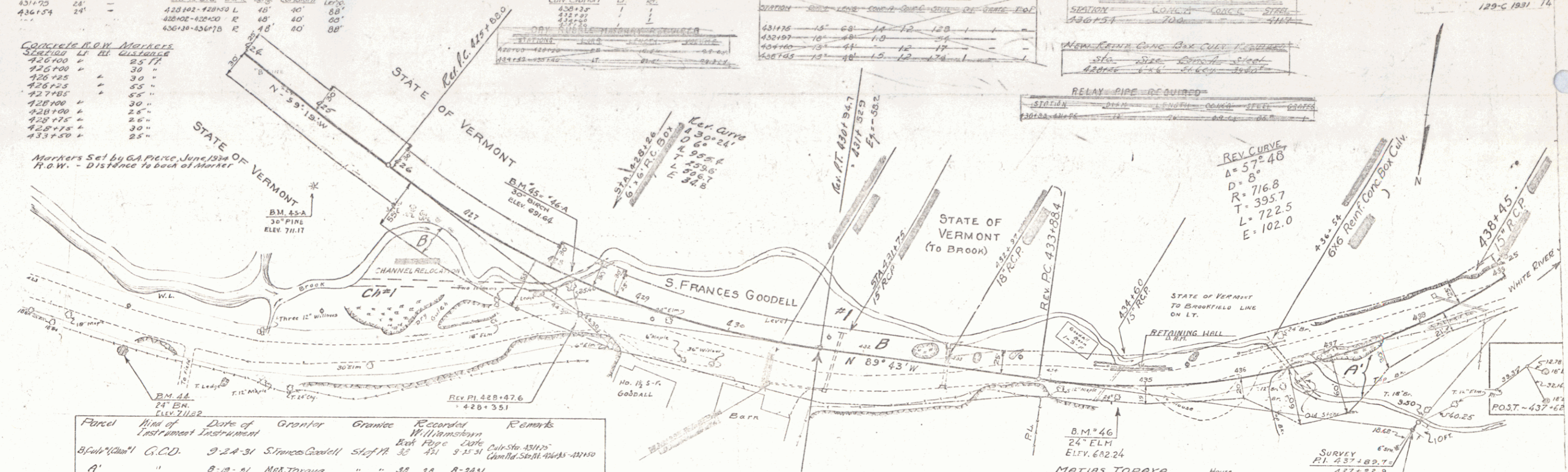
CONCRETE PAVEMENT REQUIRED

Station	Dist	Length	Notes
436+34	10'	10'	114'

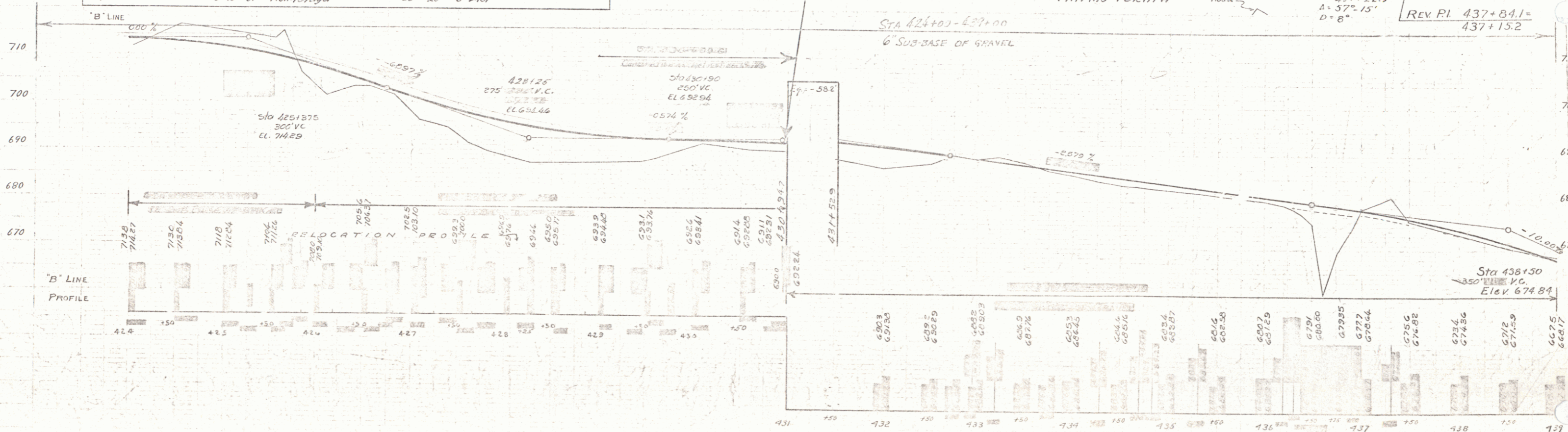
CONCRETE R.O.W. MARKERS

Station	Dist	Dist
426+00	11'	25.77'
426+00	11'	30"
426+25	11'	30"
426+25	11'	55"
427+00	11'	30"
428+00	11'	26"
428+75	11'	30"
428+75	11'	30"
433+50	11'	25"

Markers Set by G.A. Pierce, June 1939  
R.O.W. - Distance to back of marker



Parcel	Kind of Instrument	Date of Instrument	Grantor	Grantee	Recorded	Remarks
B'line	G.C.D.	9-24-31	Frances Goodsell	State	35	471 9-15-31
A'	"	8-19-31	MATIAS TORAYA	"	38 28	8-24-31



B.M. No. 44 SPIKE IN ROOT OF 24' BUTTERNUT, 31 FT. RT. OF STA 426+17, ELEV 711.02  
 B.M. No. 45-A SPIKE IN ROOT OF 30' PINE 59 FT. RT. OF STA 424+50, ELEV 711.17  
 B.M. No. 45 SPIKE IN ROOT OF 30' BUTTERNUT, 33 FT. LY. OF STA 426+30, ELEV 691.64  
 B.M. No. 46 SPIKE IN ROOT OF 24' ELM, 13 FT. RT. OF STA 434+94, ELEV 682.24

SERIES NO 129-C  
SHEET 14 OF 14-1