

WOOD GUARD RAIL REQUIRED

Cur Station	LT	RT	300' to 350'	350' to 400'	400' to 450'	450' to 500'
384+00	26'		384+00-384+26	384+26-384+40	384+40-384+50	384+50-384+60
382+37	26'		382+37-382+50	382+50-382+60	382+60-382+70	382+70-382+80

CABLE GUARD RAIL REQUIRED

Cur Station	LT	RT	300' to 350'	350' to 400'	400' to 450'	450' to 500'
384+00	26'		384+00-384+26	384+26-384+40	384+40-384+50	384+50-384+60
382+37	26'		382+37-382+50	382+50-382+60	382+60-382+70	382+70-382+80

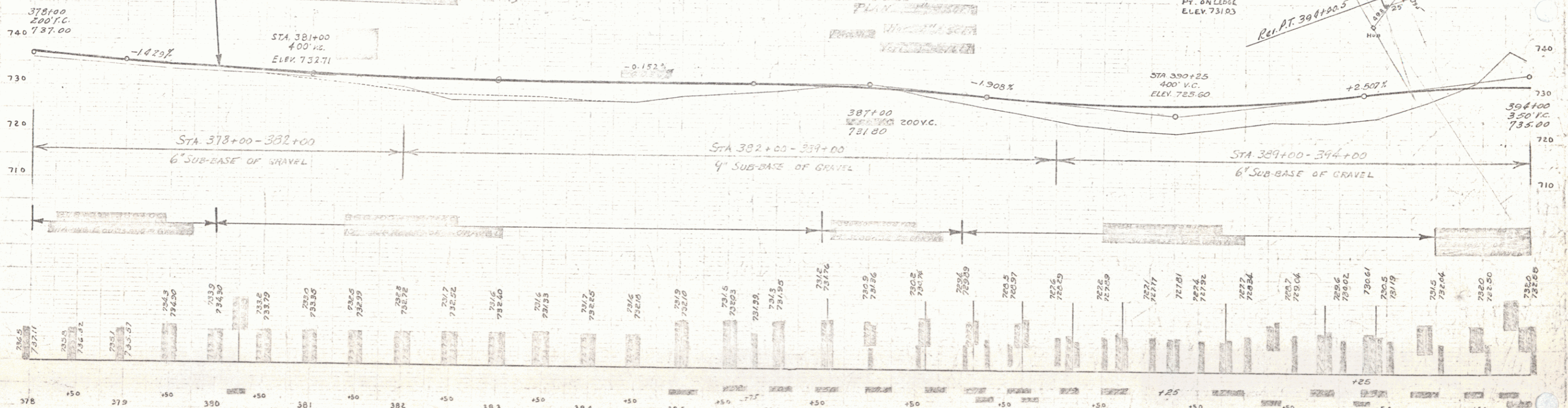
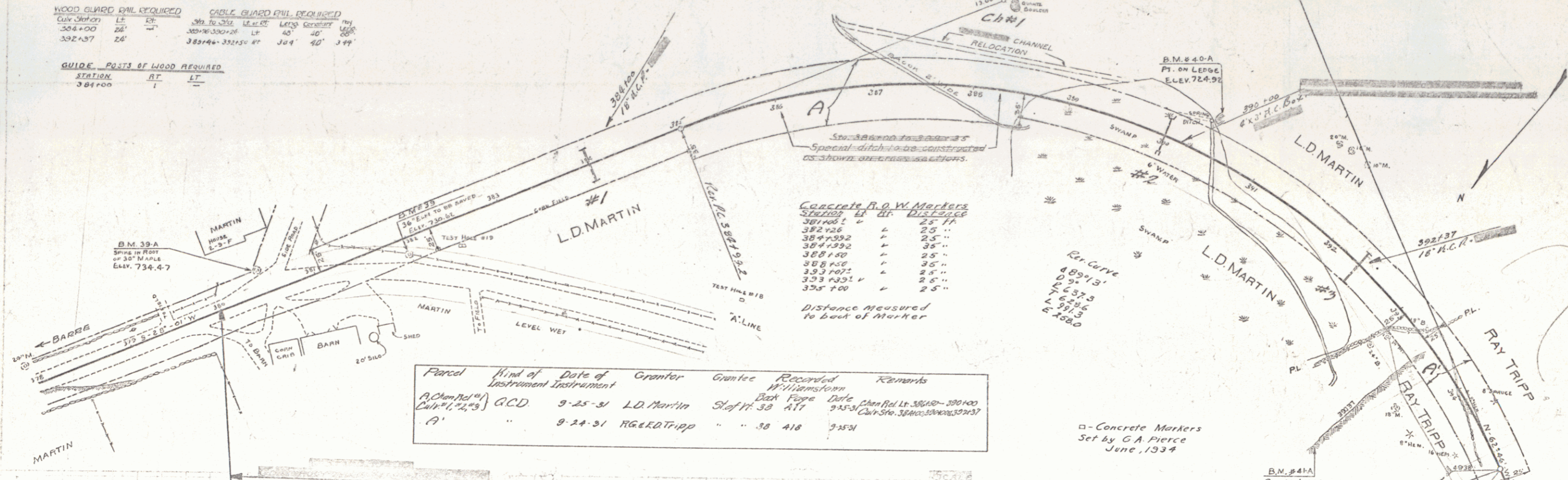
GUIDE POSTS OF WOOD REQUIRED

STATION	RT	LT
384+00	1	

New Rain Gutter Box Curves Proposed

Sta	Dist	Curve	Grade
384+00	18'	25'	3.5%
382+37	15'	15'	3.5%

FED. ROAD DIST. NO.	STATE	PROJECT NO.	CONTRACT NO.	SHEET NO.	TOTAL SHEETS
	VT	129-C	1931	11	141



B.M. No. 39-A SPIKE IN ROOT 30" MAPLE 25' LT STA. 380+45 ELEV. 734.47
 B.M. No. 40-A POINT ON LEDGE 76' LT. STA. 390+10 ELEV. 724.92
 B.M. No. 41-A POINT ON LEDGE 120' RT. STA. 393+00 ELEV. 731.03