

WOOD GUARD RAIL REQUIRED

CULY STA	LT	RT
349+50	26'	-
350+00	24'	-

GUIDE RAILS OF WOOD REQUIRED

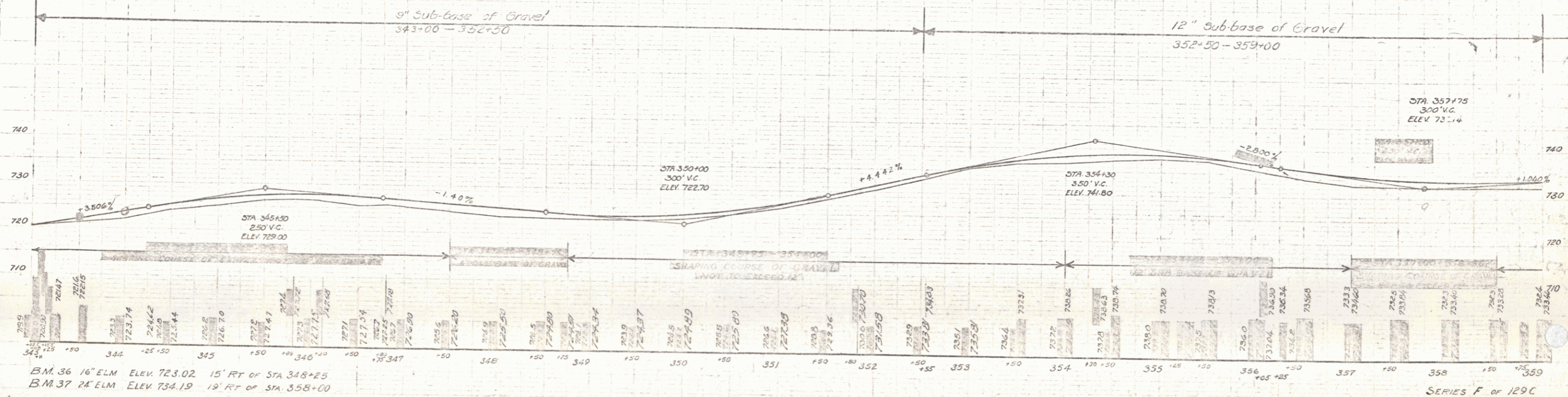
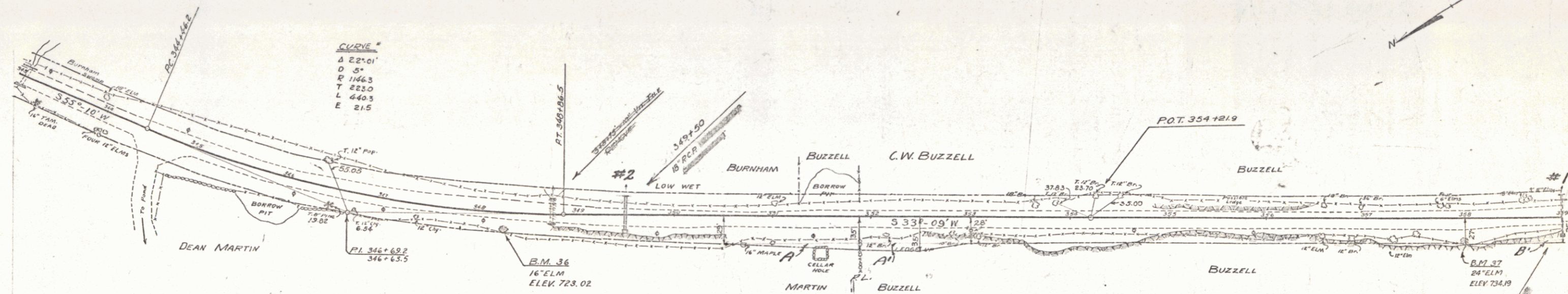
CULY STA	LT	RT
349+50	-	1
359+00	-	1

NEW SPAN-ON-PILE BRIDGES ESTABLISHED

Span No.	Span Length	Span Material	Span Date
349+00	18'	CONC. STEEL	8-10-31
352+00	15'	CONC. STEEL	8-10-31

Parcel	Kind of Instrument	Date of Grant	Grantor	Grantee	Recorded Book Page	Remarks
Culy #2	C.C.O.	8-10-31	EE & EA Burnham	St. of W.	38 410	8-24-31 Culy Sta. 340+00
A. Buzzell #1	"	8-10-31	Dean M. Martin	"	38 37	8-24-31
A. Buzzell #1	"	8-10-31	C. & B. M. Buzzell	"	38 413	9-1-31 Culy Sta. 350+00

FED. ROAD DIST. NO.	STATE	FED. AID FISCAL YEAR	SHEET NO.
3	VI	129-C-1931	6 141



B.M. 36 16' ELM ELEV 723.02 15' RT OF STA 348+25  
 B.M. 37 24' ELM ELEV 734.19 19' RT OF STA 358+00

SERIES F of 129C  
 SHEET 6 of 141