

WOOD GUARD RAIL REQUIRED
 CULV. STA. LT. RC.

332+75	24'	
--------	-----	--

GUIDE POSTS OF WOOD REQUIRED
 STATION RT. LT.

329+00	1	1
329+20	1	1
340+37	1	1

CABLE GUARD RAIL REQUIRED

STATIONS	LT. + FT.	LENG.	CONSTANT	PIV. LENGTH
328+10-328+66	RT.	56'	40'	26'
342+76-343+28	LT.	52'	40'	20'
342+76-343+24	RT.	48'	40'	20'

RELIVING PIPE CULVERTS

STATION	LENG.	C.R.M.
332+55	40	3.5' cy

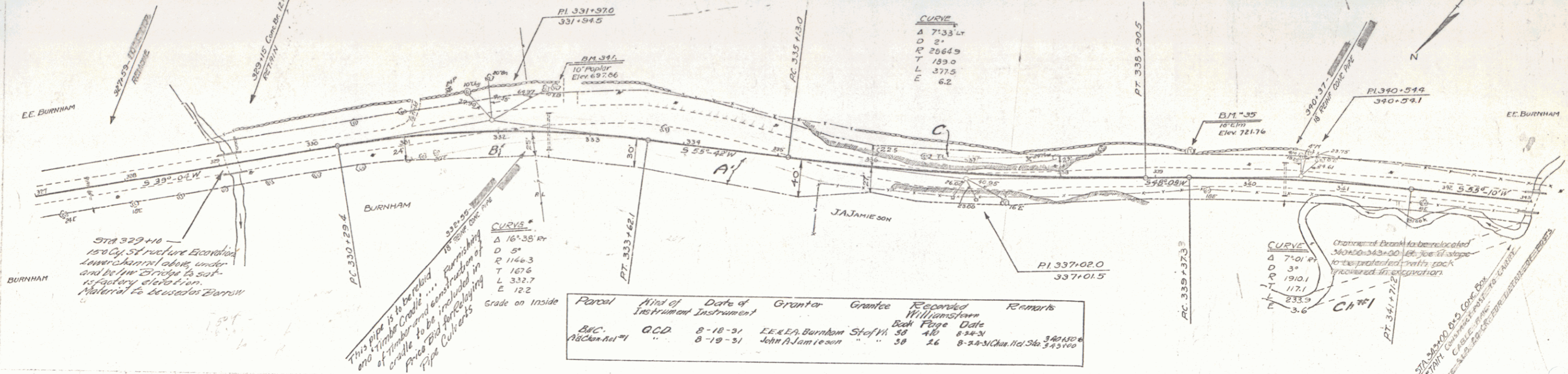
NEW SPUR WITH PIPE CULVERTS REQUIRED

STATION	LENG.	C.R.M.
335+55	15	3.3' cy
342+57	18	3.8' cy

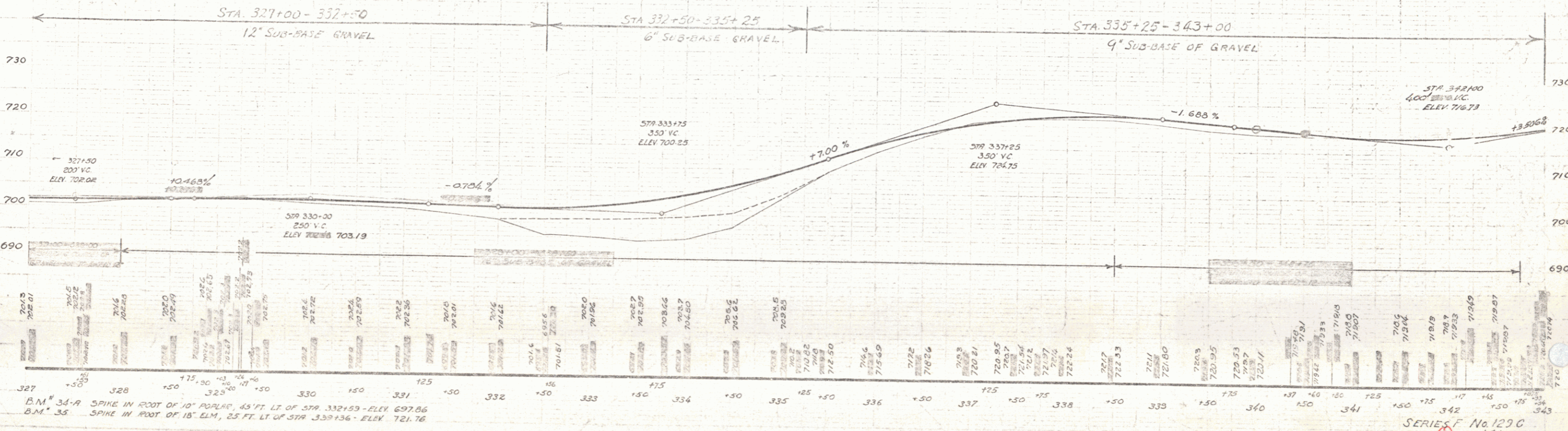
CULVERT REPAIRS REQUIRED

STA.	REPAIRS	REMARKS
343+20	REPAIR	6" CH - 600' DIA.

STATE OF ILLINOIS
 DEPT. OF TRANSPORTATION
 DISTRICT NO. 129-C 129-1
 SHEET NO. 141



Parcel	Kind of Instrument	Date of Instrument	Grantor	Grantee	Recorded	Remarks
B.C. 1828-11-11	G.C.D.	8-18-31	E.E. Burnham	Steff	38	40
B.C. 1828-11-11	"	8-18-31	John A. Jamieson	"	38	46



B.M. 34-A SPIKE IN ROOT OF 10' POPLAR, 45' FT. LT. OF STA. 332+53 - ELEV. 697.86
 B.M. 35 SPIKE IN ROOT OF 18' ELM, 25' FT. LT. OF STA. 333+136 - ELEV. 721.76

SERIES F No. 129-C
 SHEET 141