

WOOD GUIDE POSTS REQUIRED

CULV. STATION	LT.	RT.
316+11	1	1
320+00	1	1

CABLE GUARD RAIL REQUIRED

STATION	LT. # FT.	LINE	CONSTANT	INT. LENGTH
311+21 - 311+63	40'	40'	80'	
311+21 - 311+63	RT. 40'	40'	80'	

CULVERT REPAIRS REQUIRED

STATION	NATURE OF REPAIR	CONC. STRENGTH	REMARKS
311+15	CONCRETE FLOOR	9000 PSI	REPAIR REQUIRED
	CURB AND FLOOR		

NEED REPAIRS TO CURB AND FLOOR

STATION	DOWN	UP	CONC. STRENGTH	REMARKS
316+11	40'	40'	9000 PSI	REPAIR REQUIRED
320+00	36'	36'	9000 PSI	REPAIR REQUIRED

RELEVING POINTS REQUIRED

STATION	RELEVING POINT	REMARKS
309+00	309	RELEVING POINT
320+00	320	RELEVING POINT

129-C 1931 5 141

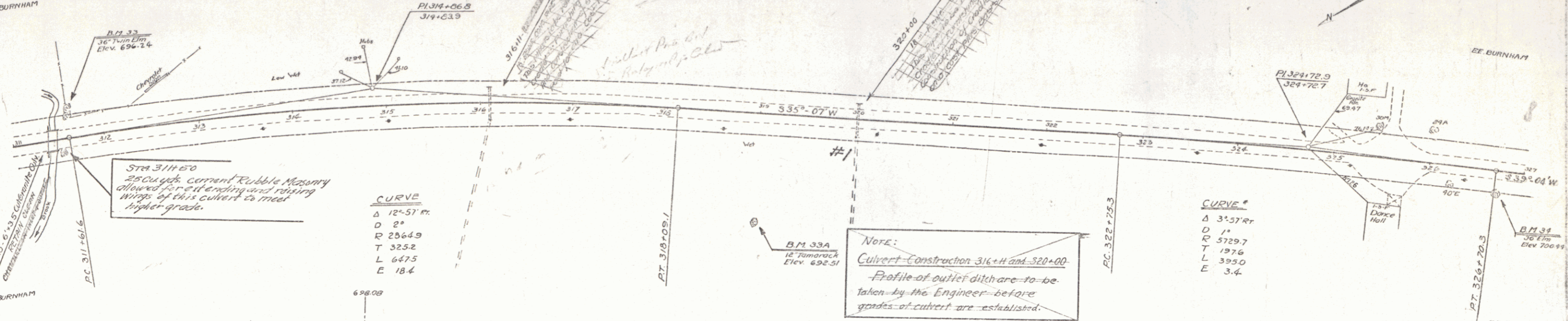
Parcel	Kind of Instrument	Date of Grant	Grantor	Grantee	Recorded	Remarks
Culv. #1	G.C.D.	8-18-31	E.E. BURNHAM	STAF. #1	58 473	8-21-31 Culv. Sta. 320+00

E.E. BURNHAM

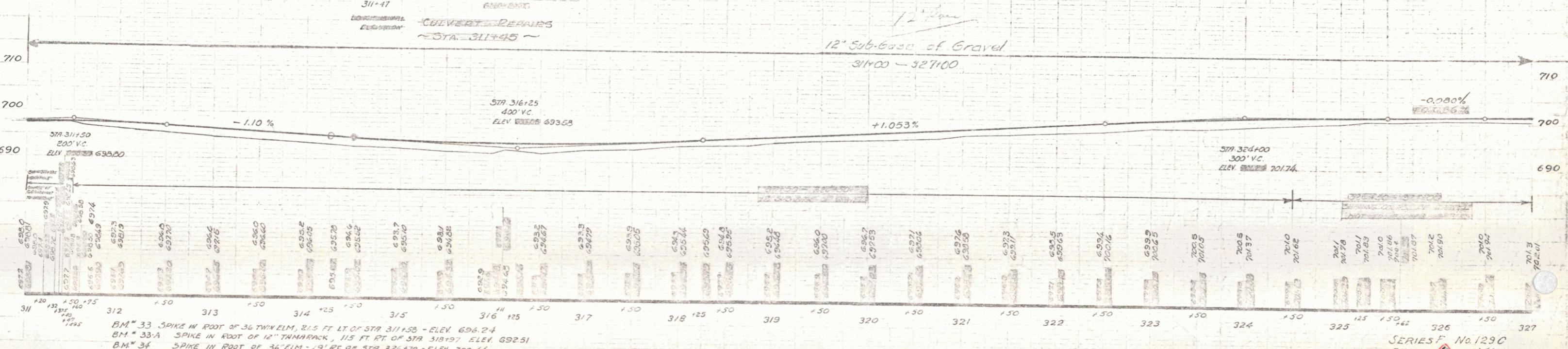
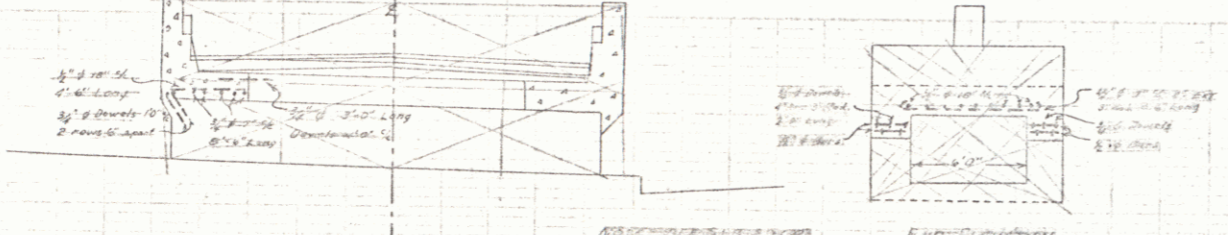
E.E. BURNHAM

E.E. BURNHAM

E.E. BURNHAM



CULVERT REPAIRS
 In good condition
 6" Solid Concrete - Etc.
 6" x 3" x 9" Solid Concrete - Etc.
 CONSTRUCT NEXT TILLS
 See Station...
 of Construction...
 posts...
 Approximate Quantities
 Conc. A - 9 cy
 Steel - 300 lbs.



BM 33 SPIKE IN FOOT OF 36" THY. ELM. 21.5 FT. LT. OF STA 311+50 - ELEV. 696.24
 BM 33A SPIKE IN FOOT OF 12" TANBRACK, 11.5 FT. RT. OF STA 318+07 - ELEV. 692.51
 BM 34 SPIKE IN FOOT OF 36" ELM. 19' RT. OF STA 326+70 - ELEV. 700.44

SERIES F. No. 1290
 SHEET 5 OF 141

5