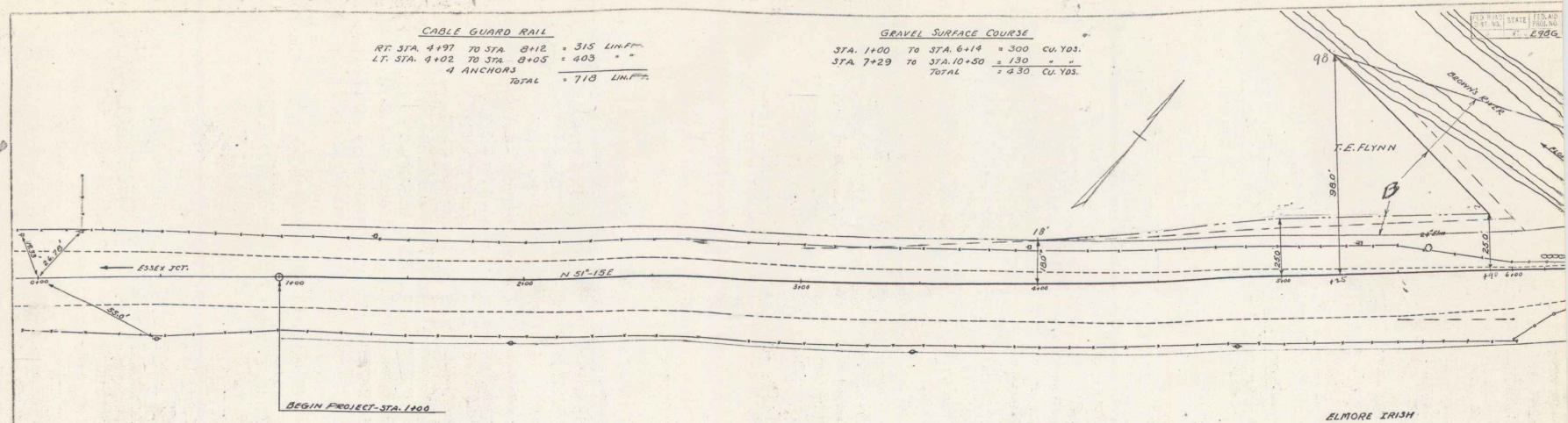


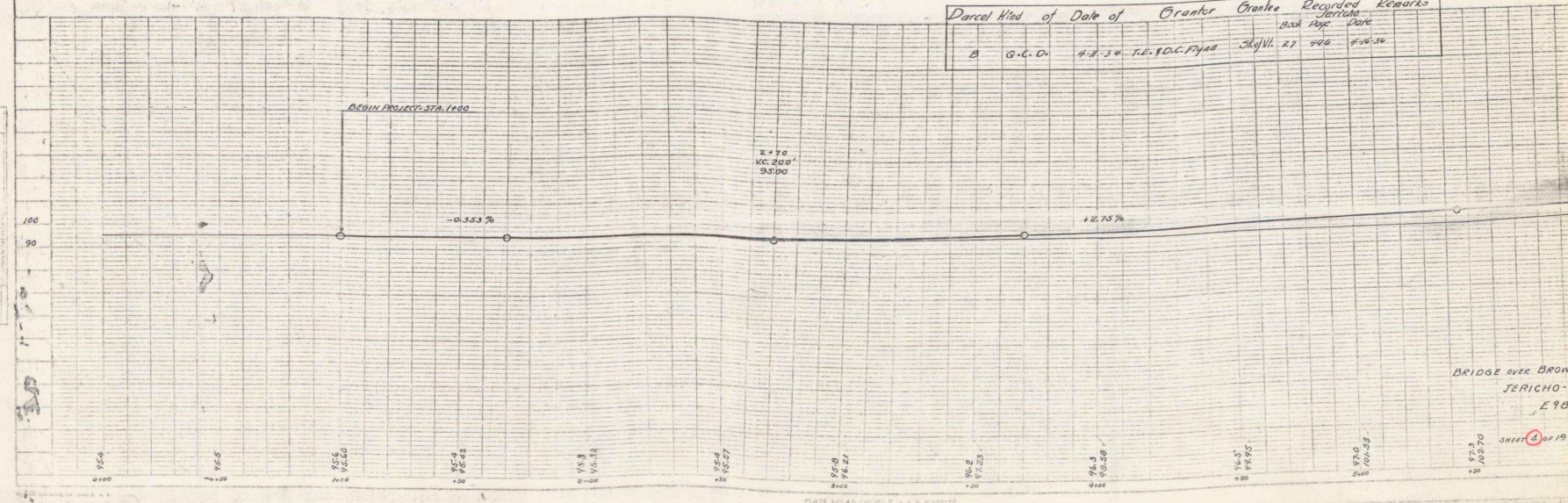
CABLE GUARD RAIL
 RT. STA. 4+97 TO STA. 8+12 = 315 LIM. FT.
 LT. STA. 9+02 TO STA. 8+05 = 403 " "
 4 ANCHORS
 TOTAL = 718 LIM. FT.

GRAVEL SURFACE COURSE
 STA. 1+00 TO STA. 6+14 = 300 CU. YDS.
 STA. 7+29 TO STA. 10+50 = 130 " "
 TOTAL = 430 CU. YDS.

PLAN
 SCALE 1" = 40'
 DATE 10/1/58
 DRAWN BY J. H. BROWN
 CHECKED BY J. H. BROWN

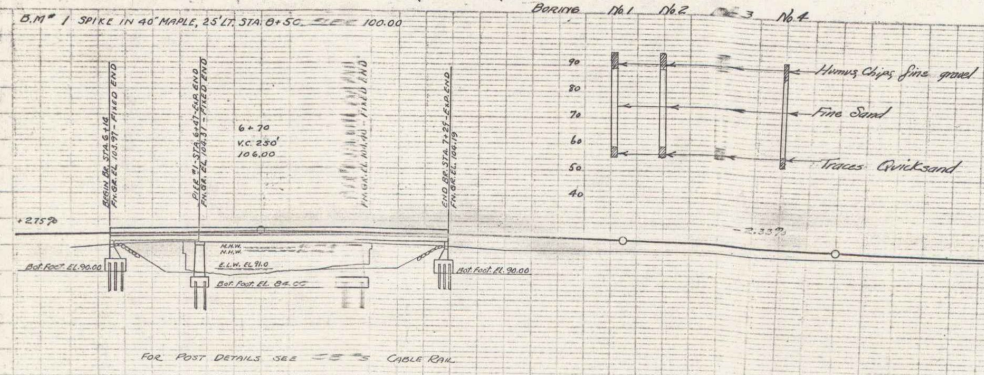
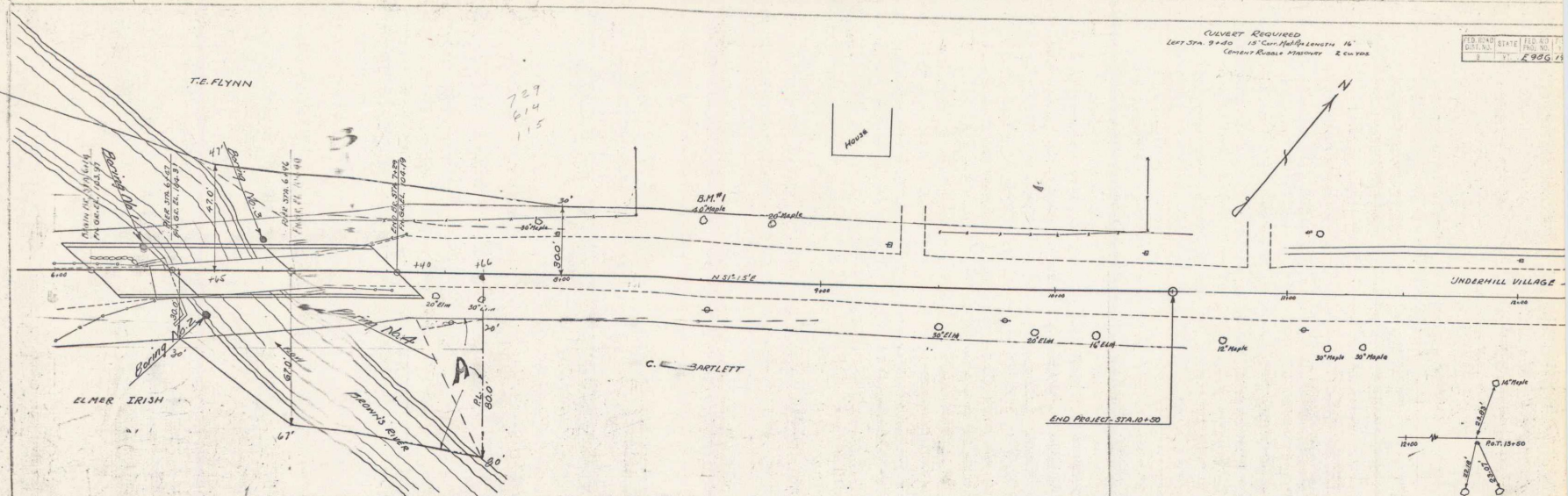


Parcel	Kind	Date of Grant	Grantor	Grantee	Recorded	Remarks
				Book	Page	Date
B	G.C.D.	4-11-34	T.E. FLYNN	21	400	7-16-36



BRIDGE OVER BROWN
 JERICO-H
 E 98

CULVERT REQUIRED
 Left Sta. 9+40 15' Cur. Half Length 16'
 Center Road to Mainover 2' to 100'



Parcel	Kind of Instrument	Date of Instrument	Grantor	Grantee	Recorded	Remarks
A	G.C.D.	11-25-33	Underhill Iron	St. J. W.	Book 27 Page 252	12-1-33
B	G.C.D.	4-11-34	T.E. & D.C. Flynn	H.	27 252	5-16-34

Sta.	Elev.	Sta.	Elev.	Sta.	Elev.	Sta.	Elev.	Sta.	Elev.
9+1	103.77	9+11	104.17	9+21	104.57	9+31	104.97	9+41	105.37
9+2	104.16	9+12	104.56	9+22	104.96	9+32	105.36	9+42	105.76
9+3	104.55	9+13	104.95	9+23	105.35	9+33	105.75	9+43	106.15
9+4	104.94	9+14	105.34	9+24	105.74	9+34	106.14	9+44	106.54
9+5	105.33	9+15	105.73	9+25	106.13	9+35	106.53	9+45	106.93
9+6	105.72	9+16	106.12	9+26	106.52	9+36	106.92	9+46	107.32
9+7	106.11	9+17	106.51	9+27	106.91	9+37	107.31	9+47	107.71
9+8	106.50	9+18	106.90	9+28	107.30	9+38	107.70	9+48	108.10
9+9	106.89	9+19	107.29	9+29	107.69	9+39	108.09	9+49	108.49
9+10	107.28	9+20	107.68	9+30	108.08	9+40	108.48	9+50	108.88
9+11	107.67	9+21	108.07	9+31	108.47	9+41	108.87	9+51	109.27
9+12	108.06	9+22	108.46	9+32	108.86	9+42	109.26	9+52	109.66
9+13	108.45	9+23	108.85	9+33	109.25	9+43	109.65	9+53	110.05
9+14	108.84	9+24	109.24	9+34	109.64	9+44	110.04	9+54	110.44
9+15	109.23	9+25	109.63	9+35	110.03	9+45	110.43	9+55	110.83
9+16	109.62	9+26	110.02	9+36	110.42	9+46	110.82	9+56	111.22
9+17	110.01	9+27	110.41	9+37	110.81	9+47	111.21	9+57	111.61
9+18	110.40	9+28	110.80	9+38	111.20	9+48	111.60	9+58	112.00
9+19	110.79	9+29	111.19	9+39	111.59	9+49	111.99	9+59	112.39
9+20	111.18	9+30	111.58	9+40	111.98	9+50	112.38	9+60	112.78

Wash Boring Notes added
 A.P.A. B-A-33

BRIDGE OVER BROWN'S RIVER
 JERICHO-VT.
 E 98 G
 SHEET 5 OF 19 SHEETS