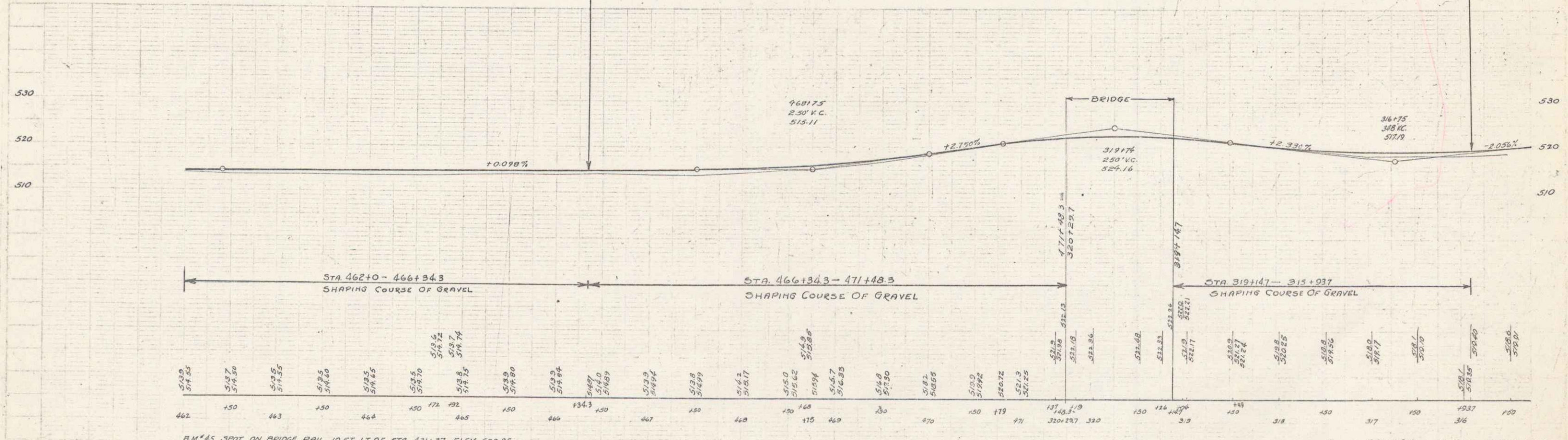
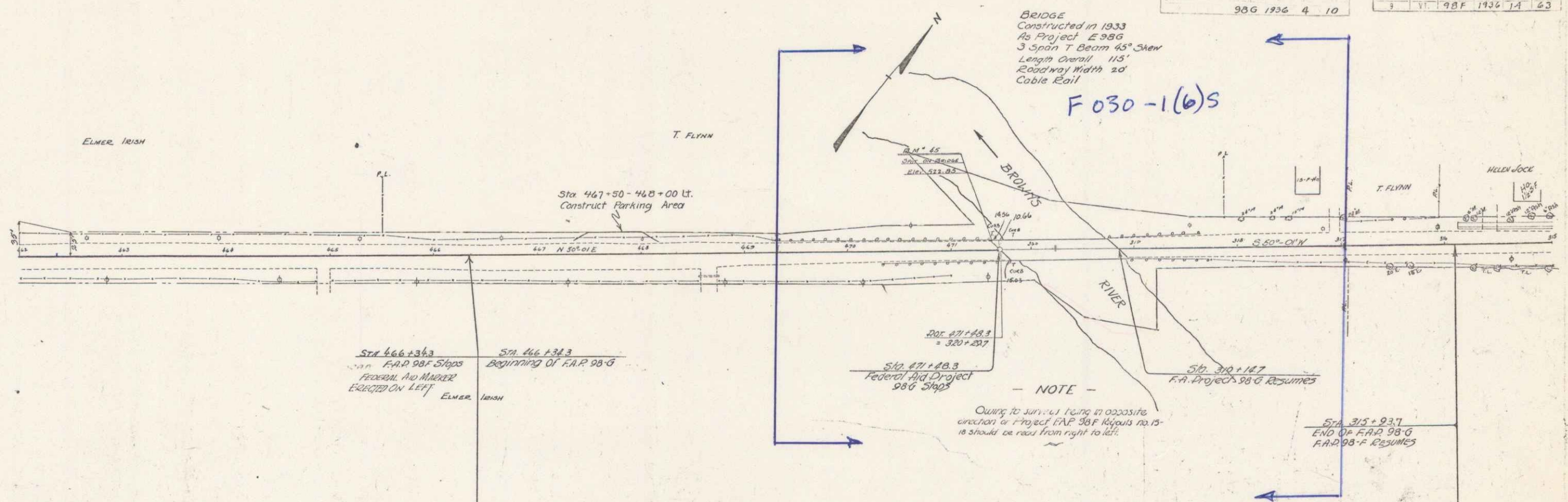


BRIDGE  
 Constructed in 1933  
 As Project E 98G  
 3 Span T Beam 45° Skew  
 Length Overall 115'  
 Roadway Width 20'  
 Cable Rail

F 030-1(6)S



STA 462+0 - 466+343 SHAPING COURSE OF GRAVEL

STA 466+343 - 471+483 SHAPING COURSE OF GRAVEL

STA 319+147 - 315+937 SHAPING COURSE OF GRAVEL

B.M. 45 SPOT ON BRIDGE RAIL 10 FT. LT. OF STA 471+37 ELEV 522.85

Series F.A.P. No 98G 40-10 SERIES F.A.P. NO 98-F SHEET 1A OF 63