

INDEX OF SHEETS

SHEET NO. 1	TITLE PAGE
" 2	TYPICAL CROSS-SECTION OF IMPROVEMENT (2% GRAVEL MIXED-IN-PLACE SURFACE COURSE WITH RESINED TAR (72% 24.0 & 24.4))
" 3	BANKING AND WIDENING TABLES
" 4-15	PLAN AND PROFILE SHEETS
" 15A	PLAN AND PROFILE OF RAILROAD DITCH
" 15B & C	CROSS-SECTIONS OF RAILROAD DITCH
" 15	STANDARD SHEET 320; PIPE CULVERTS
" 20	" 320; BOX CULVERTS
" 21	" 330; GUARD RAIL
" 22	" 331; BOUNDARY MARKERS
" 23	" 340; BARRICADES, SIGNS & LIGHTS
" 23A	" 341; BOX CULVERTS
" 24-63	CROSS-SECTIONS

Standard sheets 328 and 329 approved by the Chief Engineer on July 14, 1933.

Standard sheet 330 approved by the Chief Engineer on Aug. 15, 1933.

Standard sheet 331 approved by the Chief Engineer on July 25, 1934.

FED. ROAD DIST. NO.	STATE	FED. AID PROJ. NO.	FISCAL YEAR	PROJECT NO.	TOTAL SHEETS
9	Vt.	108F	1936	1	63

STATE OF VERMONT
STATE HIGHWAY DEPARTMENT

PLAN AND PROFILE OF PROPOSED
STATE HIGHWAY

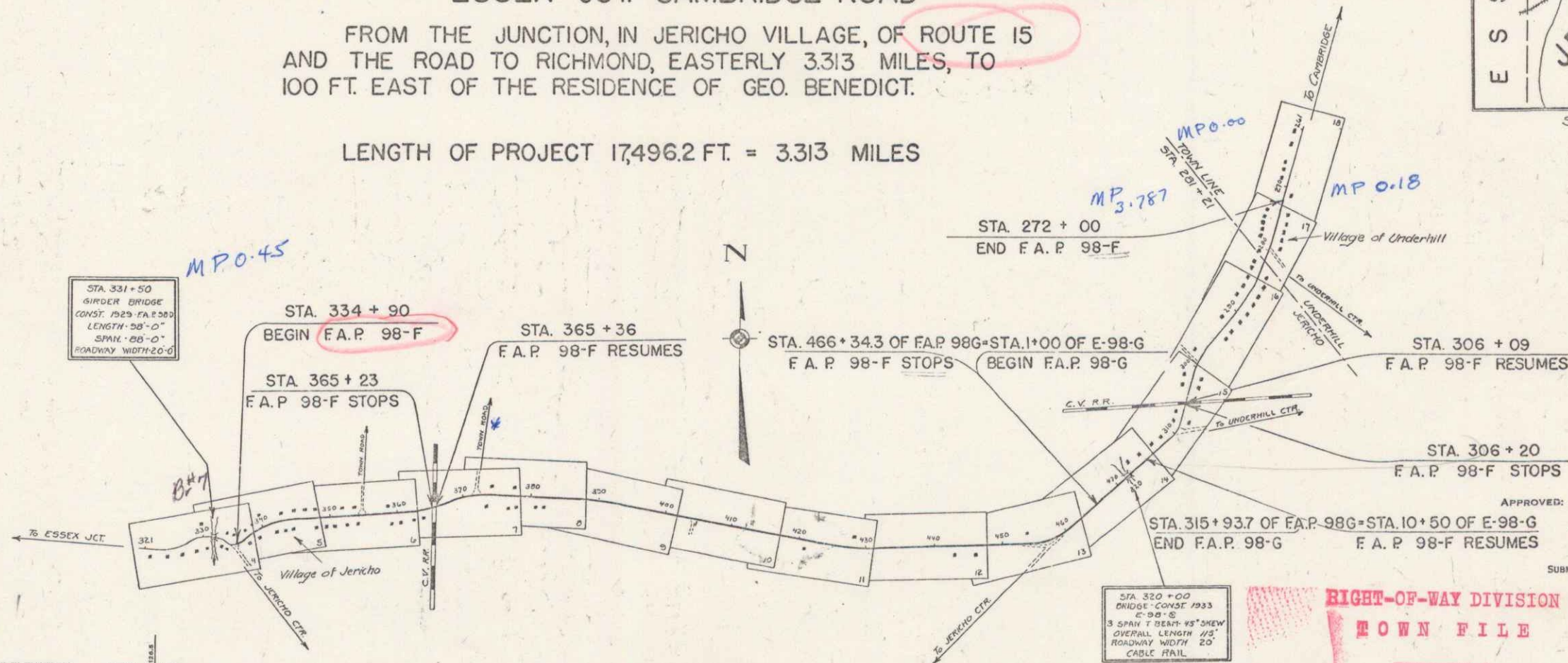
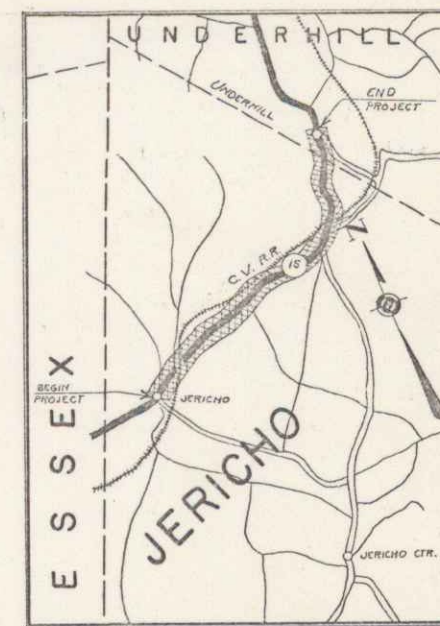
FEDERAL AID PROJECT

TOWNS OF JERICO & UNDERHILL *Pin# 00R715*

ESSEX JCT.-CAMBRIDGE ROAD

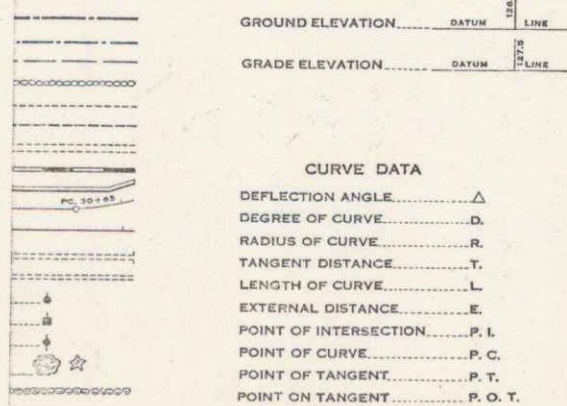
FROM THE JUNCTION, IN JERICO VILLAGE, OF ROUTE 15
AND THE ROAD TO RICHMOND, EASTERLY 3.313 MILES,
TO 100 FT. EAST OF THE RESIDENCE OF GEO. BENEDICT.

LENGTH OF PROJECT 17,496.2 FT. = 3.313 MILES



PROJECT NUMBER	Jericho-Underhill
TYPE	F.A.P. 98-F
LENGTH	
YEAR TO	
CONTRACTOR	see file card
LOCATION	

CONVENTIONAL SIGNS



SCALES

TITLE	1"=1000'
TYPICAL	1"=20'
PLAN	1"=50'
PROFILE	HOR. 1"=50'
VER.	1"=10'
CROSS-SECTIONS	1"=5'

These plans are subject to such revisions as may be required by the Bureau of Public Roads or the Commissioner of Highways. Construction is to be carried on in accordance with the plans and standard Road and Bridge Specifications of 1930 including all subsequent approved revisions and such revised specifications and special provisions as are submitted with the plans. Attention of contractor is called to the fact that the State Highway Board reserves the right to extend this project northward of the same contract prices. Said cost of extension not to exceed 25% of the amount of contract.

RIGHT-OF-WAY DIVISION
TOWN FILE
PERPETUAL
Town of *U-15*

APPROVED: *May 20, 1935*
H. S. [Signature]
COMMISSIONER OF HIGHWAYS
SUBMITTED BY ORDER OF THE STATE HIGHWAY BOARD

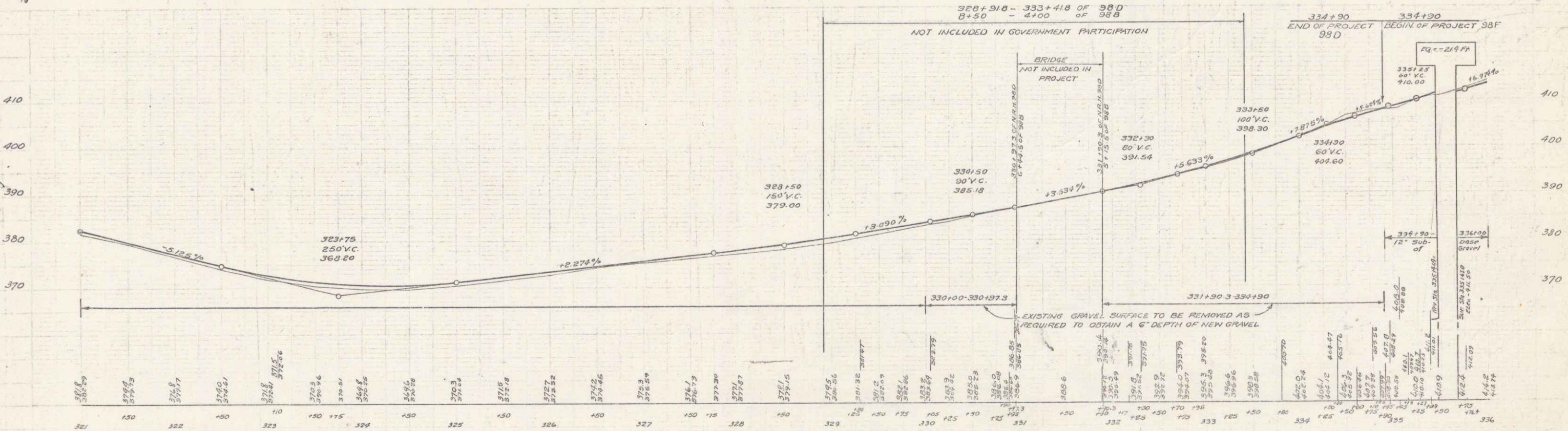
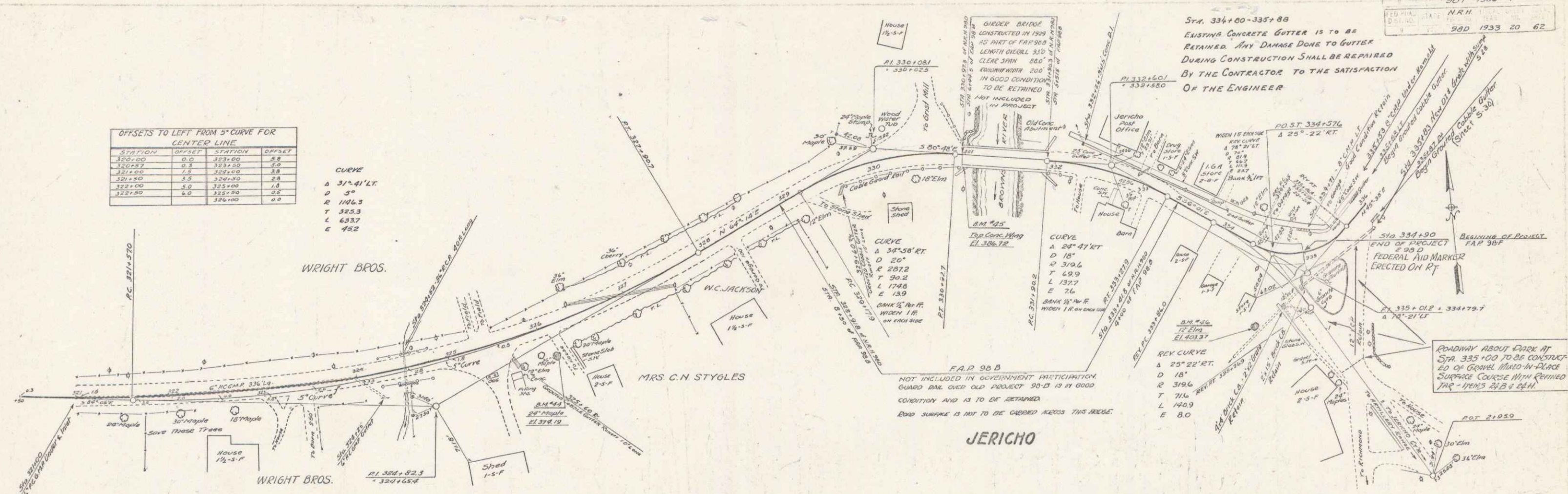
RECOMMENDED [Signature] DISTRICT ENGINEER BUREAU OF PUBLIC ROADS
RECOMMENDED FOR APPROVAL [Signature] CHIEF ENGINEER BUREAU OF PUBLIC ROADS
APPROVED [Signature] DIRECTOR BUREAU OF PUBLIC ROADS

CORRECT: *May 20, 1935*
[Signature] ROAD ENGINEER
SERIES F.A.P. NO. 98-F FILED
SHEET 1 OF 63

OFFSETS TO LEFT FROM 5° CURVE FOR CENTER LINE

STATION	OFFSET	STATION	OFFSET
320+00	0.0	323+00	5.8
321+00	0.8	324+00	7.0
322+00	1.8	325+00	8.8
323+00	3.5	326+00	11.0
324+00	6.0	327+00	13.8
325+00	9.0	328+00	17.0
326+00	12.0	329+00	20.8

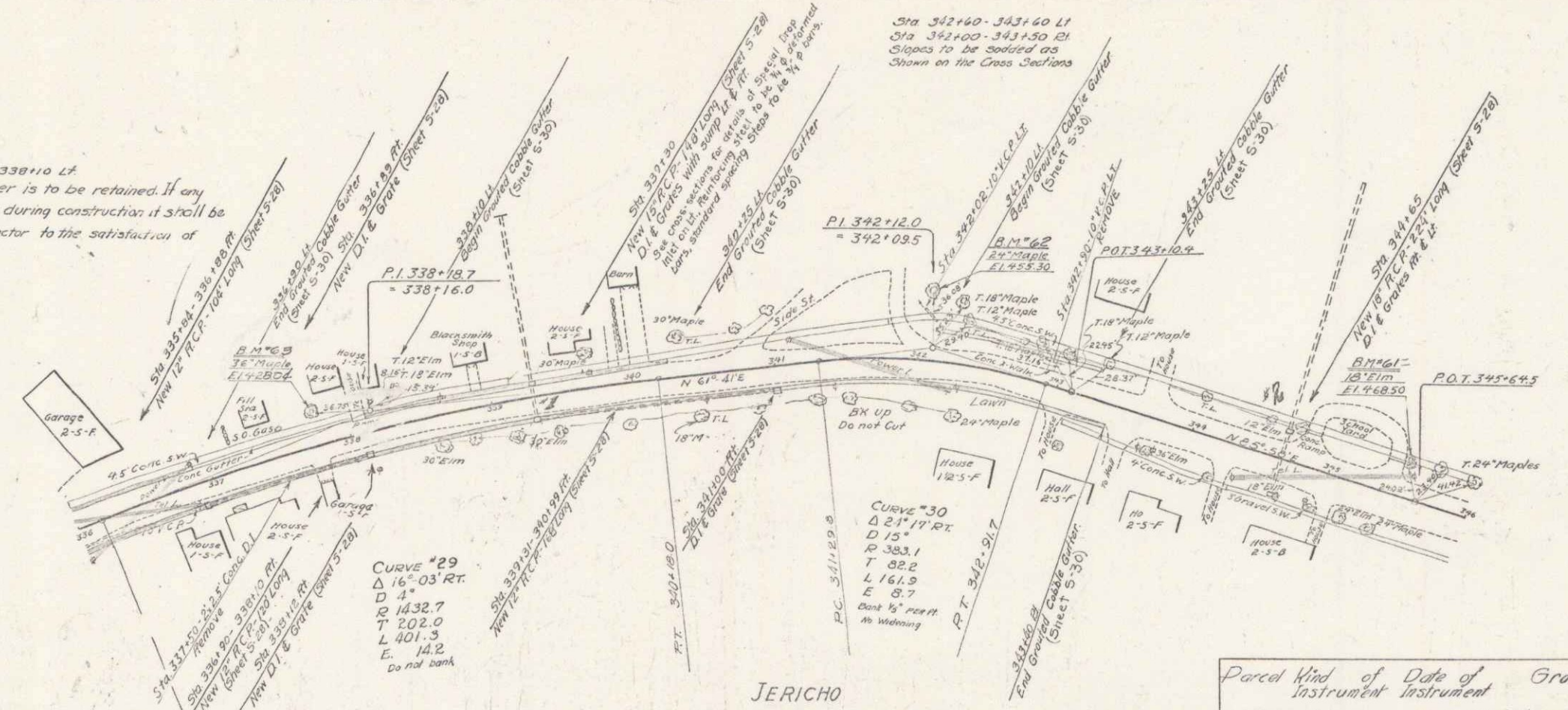
CURVE
 A 31° 41' LT
 D 57
 E 1106.3
 T 325.3
 L 633.7
 E 452



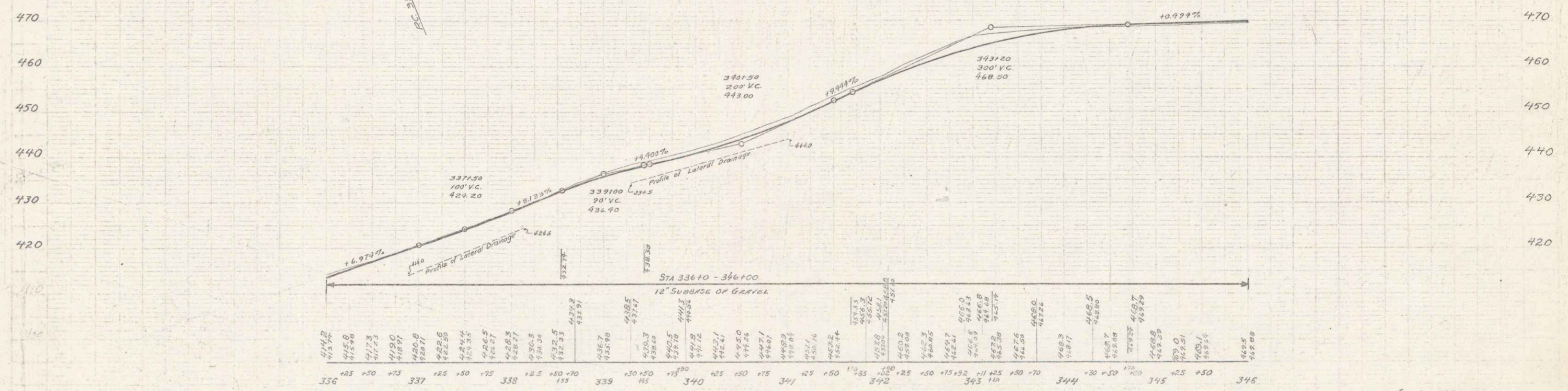
BM #44 SPIKE IN ROOT 36" MAPLE 30R RT STA 326+08 ELEV 374.19
 B.M. #45 TOP CONCRETE WING 13R RT STA 330+97 ELEV 386.72
 B.M. #46 SPIKE IN ROOT 18" ELM 60R RT STA 334+59 JERICHO CENTER ROAD ELEV 403.37

2

Sta 336190-338+10 LF
 Existing Concrete Gutter is to be retained. If any
 damage is done to gutter during construction it shall be
 repaired by the contractor to the satisfaction of
 the engineer.

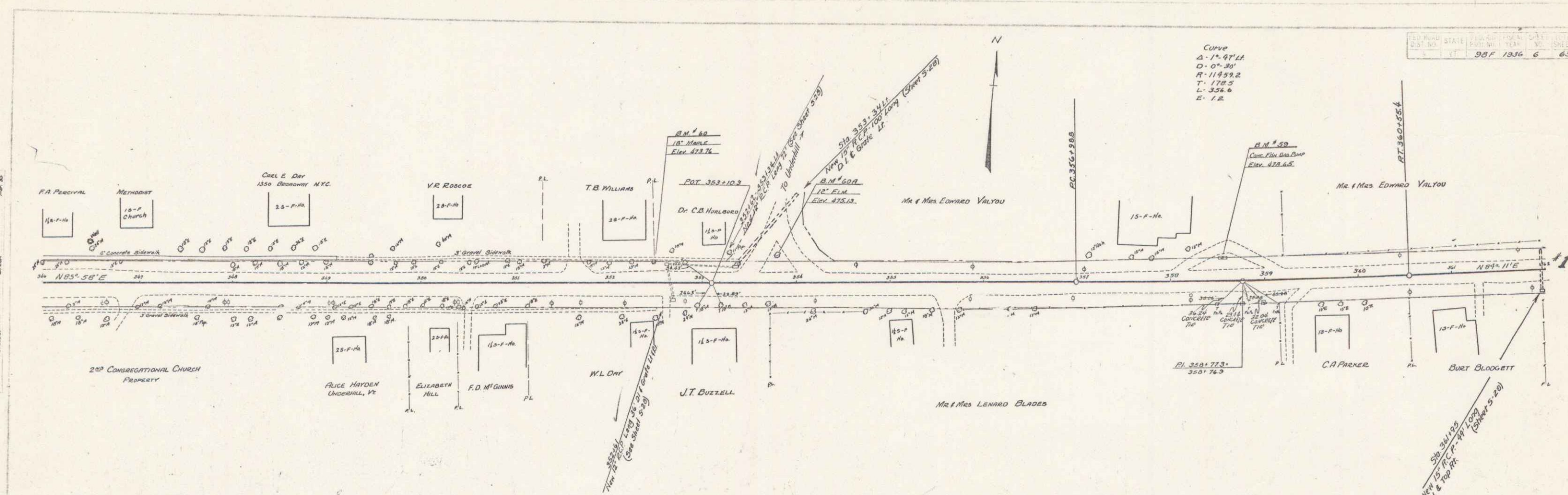


Parcel No.	Kind of Instrument	Date of Release	Grantor	Grantee	Remarks
41	Release	10-15-35	William Trich	Shift. Col. Sta 339+30	
42	"	"	Edw. W. Wood Lot	"	344+150



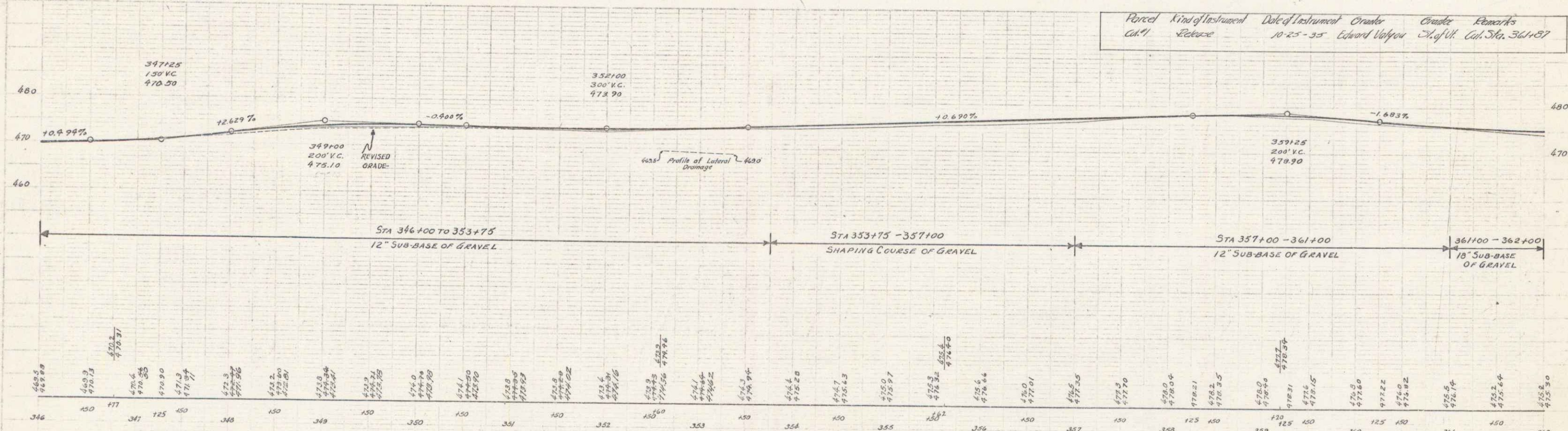
BM #63 Spike in Root 36' Maple 2 1/2" L. Sta 337+00 El. 428.04
 B.M. #62 24" 45" 342+05 El. 455.30
 B.M. #61 10" Elm 21" 345+02 El. 468.50

Series RR No. 98D
 Sheet 21 of 62
 SIZES FOR NO. 98 F
 SHEET 3 OF 63

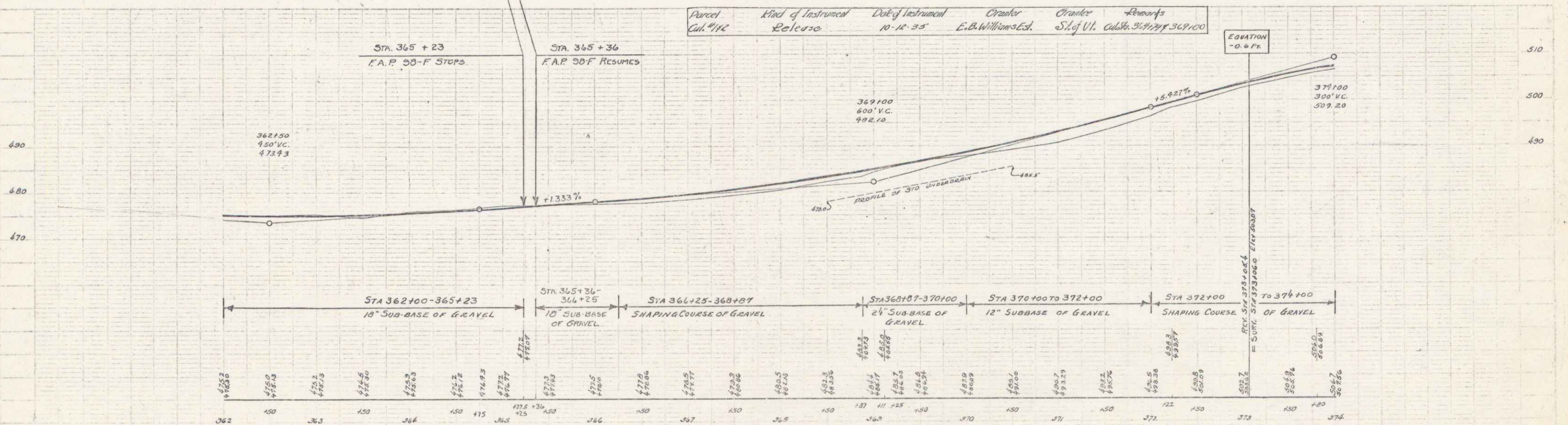
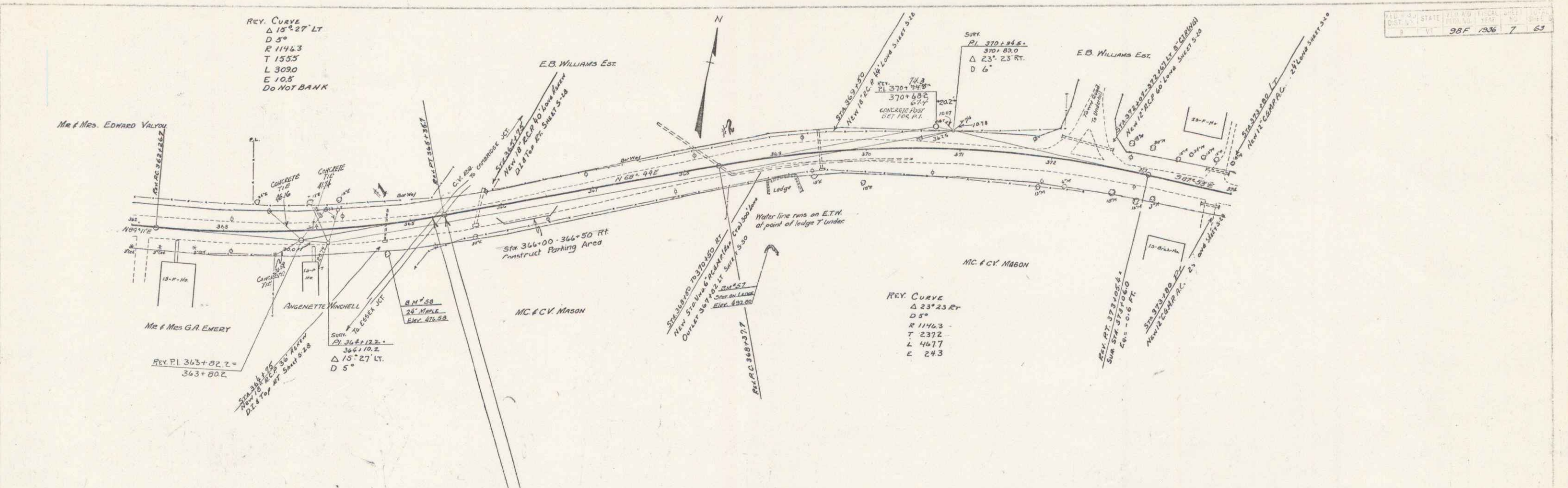


Curve
 Δ = 12.5714
 D = 0.301
 R = 11459.2
 T = 178.5
 L = 326.6
 E. I. Z.

Parcel	Kind of Instrument	Date of Instrument	Owner	Grade	Remarks
441	Release	10-25-35	Edward Valyau	12' x 11' 6"	Cal. Sta. 361+87

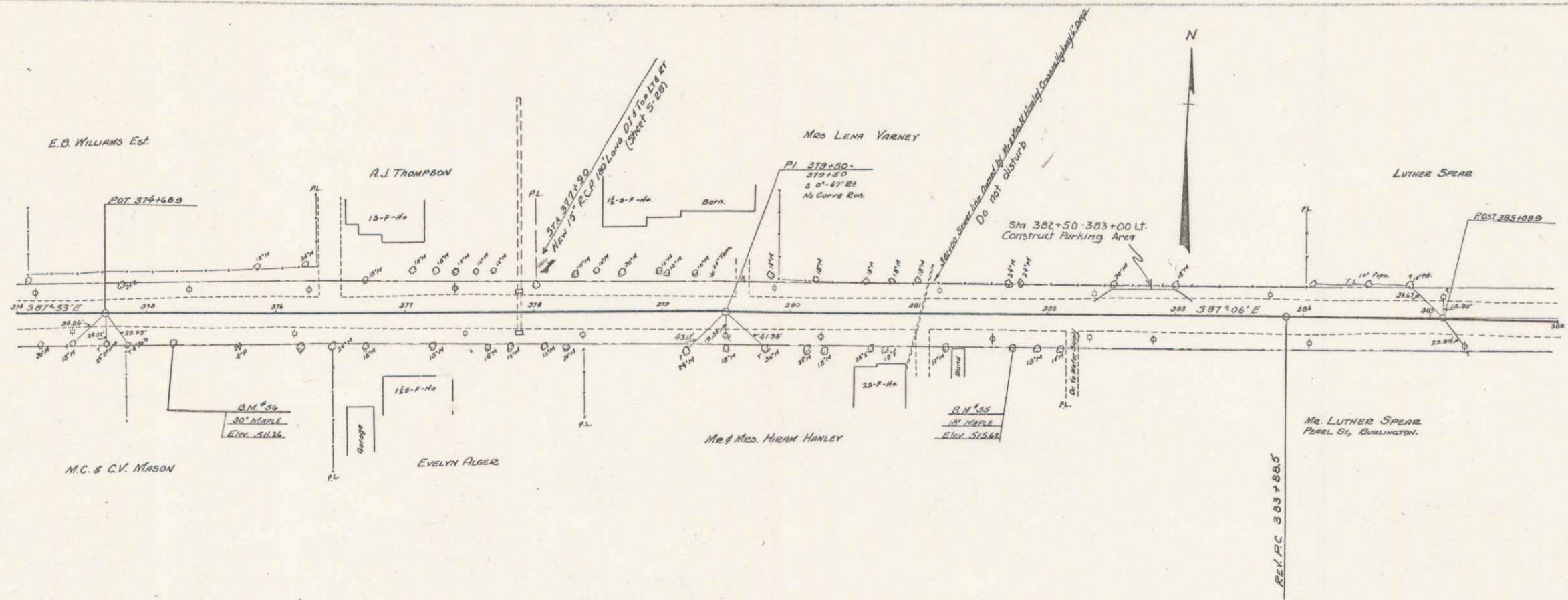


BM #60 SPIKE IN ROOT OF 10' MAPLE 22.5 FT LT OF STA 352+71 ELEV 473.76
 BM #60A SPIKE IN ROOT OF 12' ELM 29 FT LT OF STA 353+70 ELEV 475.13
 BM #59 PAINT SPOT ON CONC. FOUNDATION 22.5 FT LT STA 356+61 ELEV 478.65

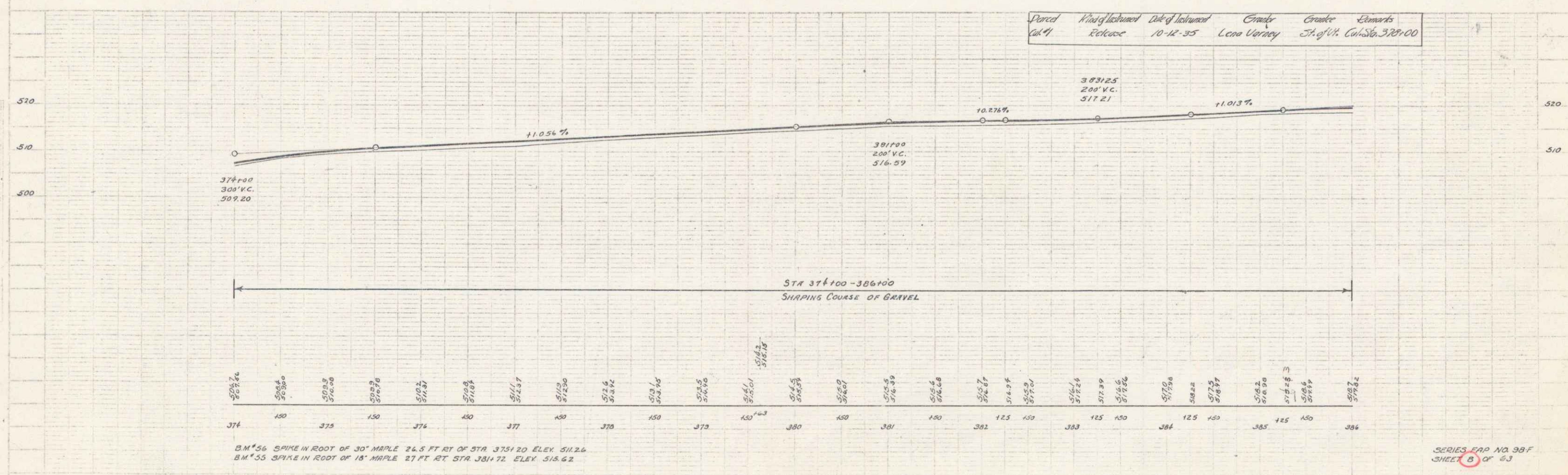


Parcel	Kind of Instrument	Date of Instrument	Crafter	Recorder	Remarks
Call #446	Release	10-12-35	E.B. Williams Est.	St. of Ill.	Call # 364777-369100

B.M. 58 SPIKE IN ROOT OF 24' MAPLE 26 FT RT OF STA 364+75 ELEV 476.58
 B.M. 37 PAINT SPOT ON LEDGE 89 FT RT OF STA 368+75 ELEV 492.80

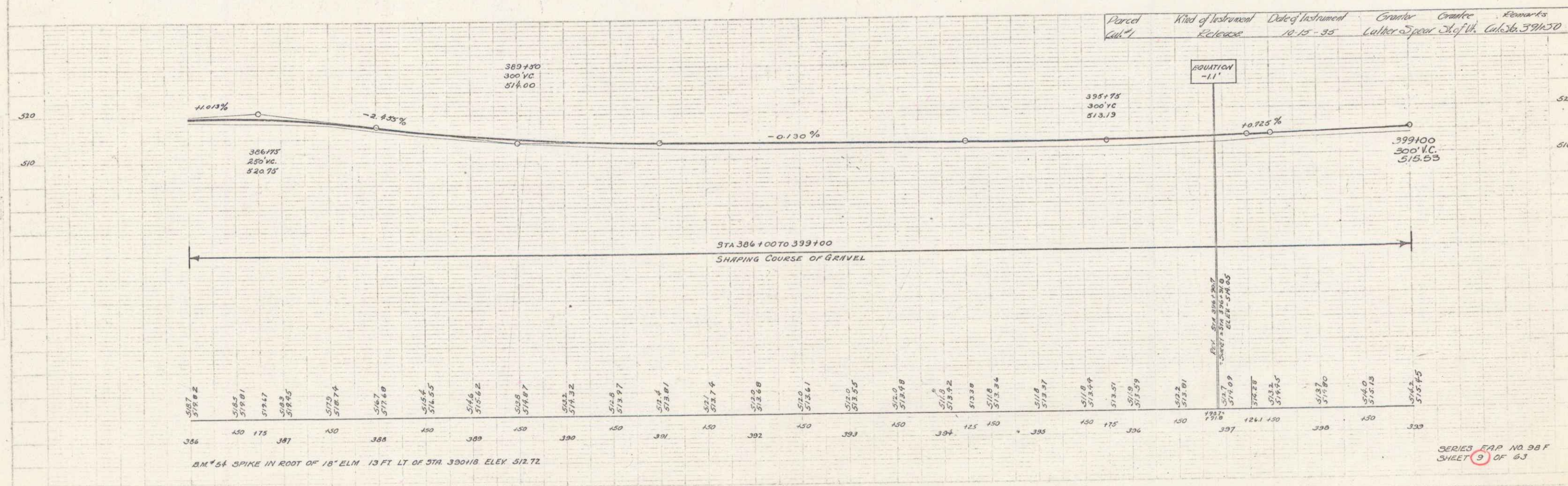
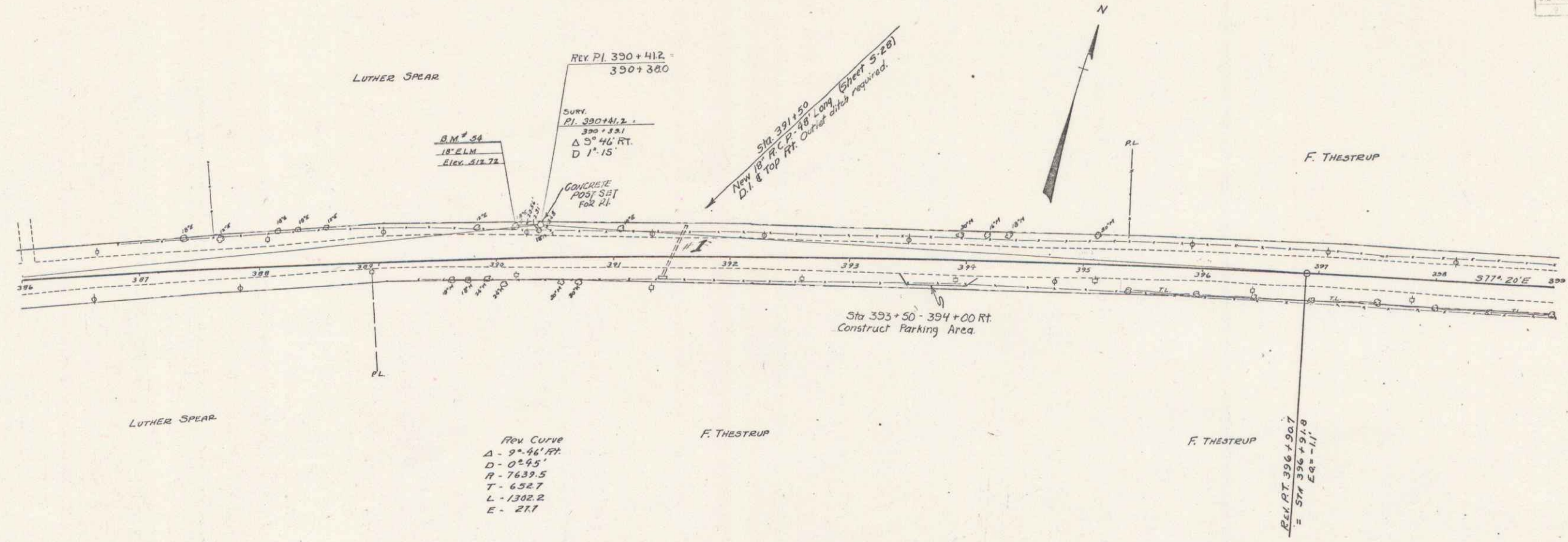


Parcel 41
 Kind of Release
 Date of Release 10-12-35
 County Lena Varney
 Grantee St. of W. Cal. Sta. 378+00
 Remarks

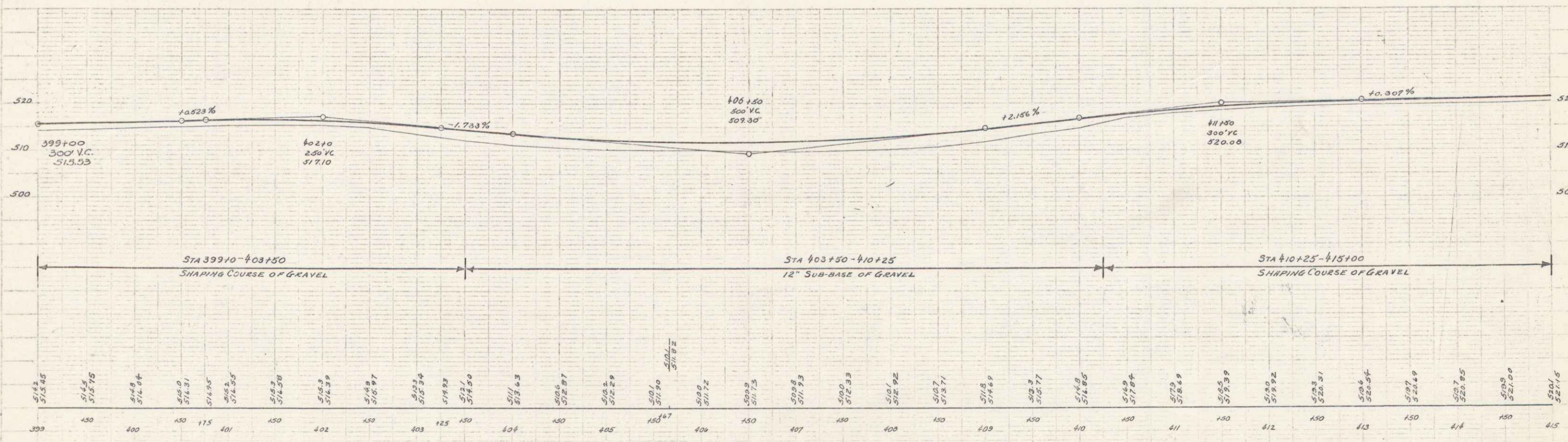
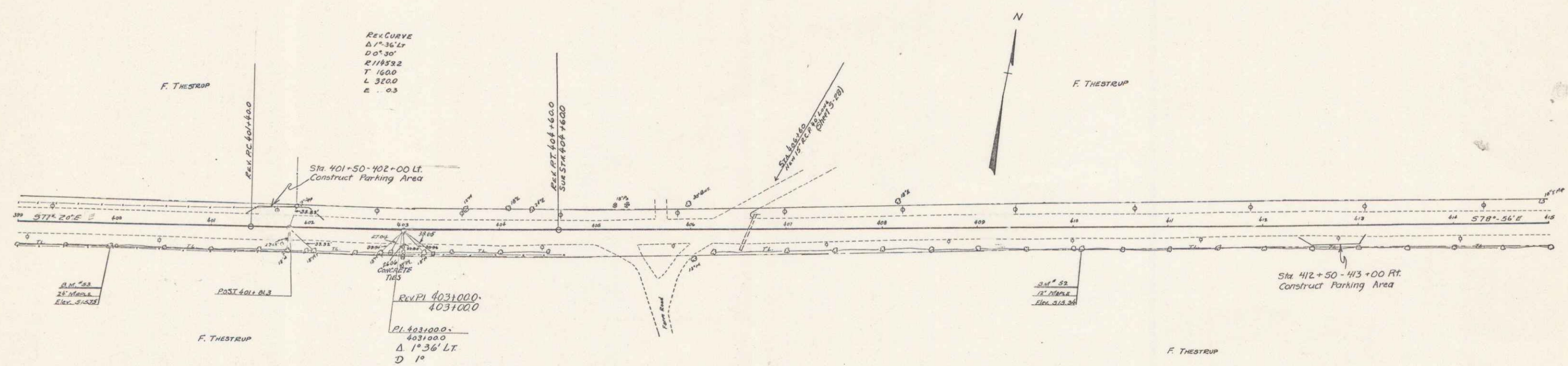


BM #56 SPIKE IN ROOT OF 30' MAPLE 26.5 FT RT OF STA. 375+20 ELEV. 511.26
 BM #55 SPIKE IN ROOT OF 18' MAPLE 27 FT RT STA 381+72 ELEV. 515.62

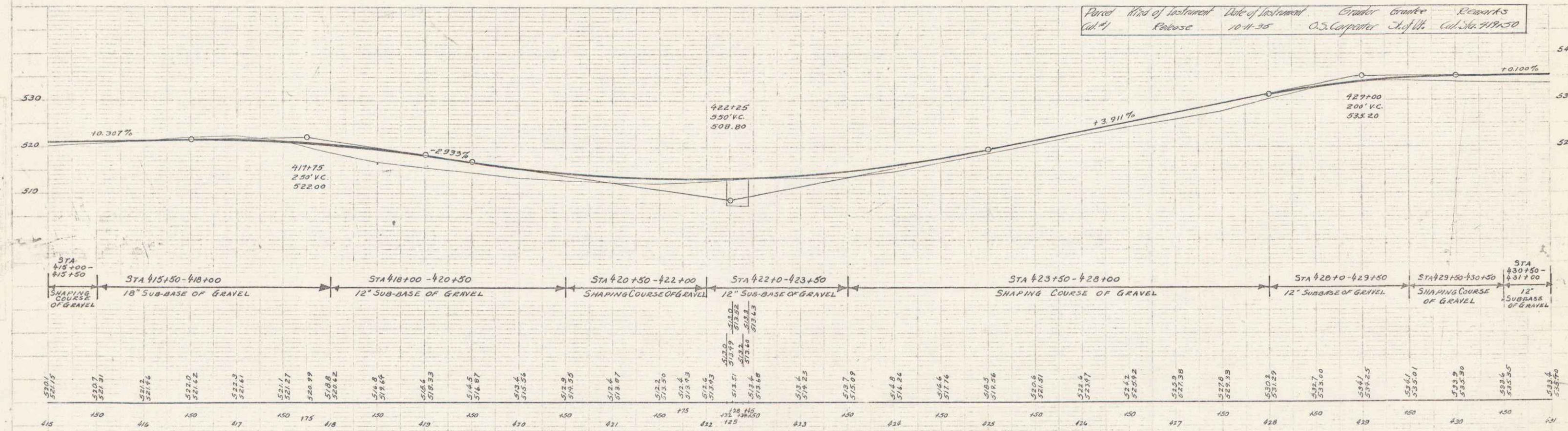
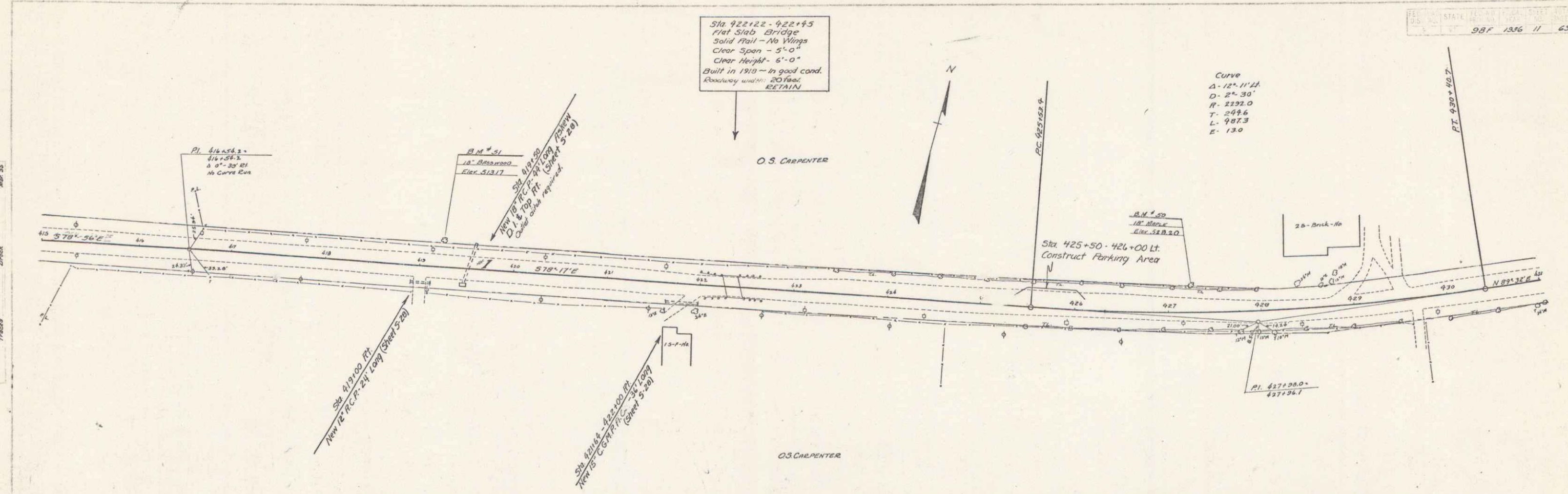
6



B.M. # 54 SPIKE IN ROOT OF 18" ELM 13 FT LT OF STA 390+18 ELEV 512.72



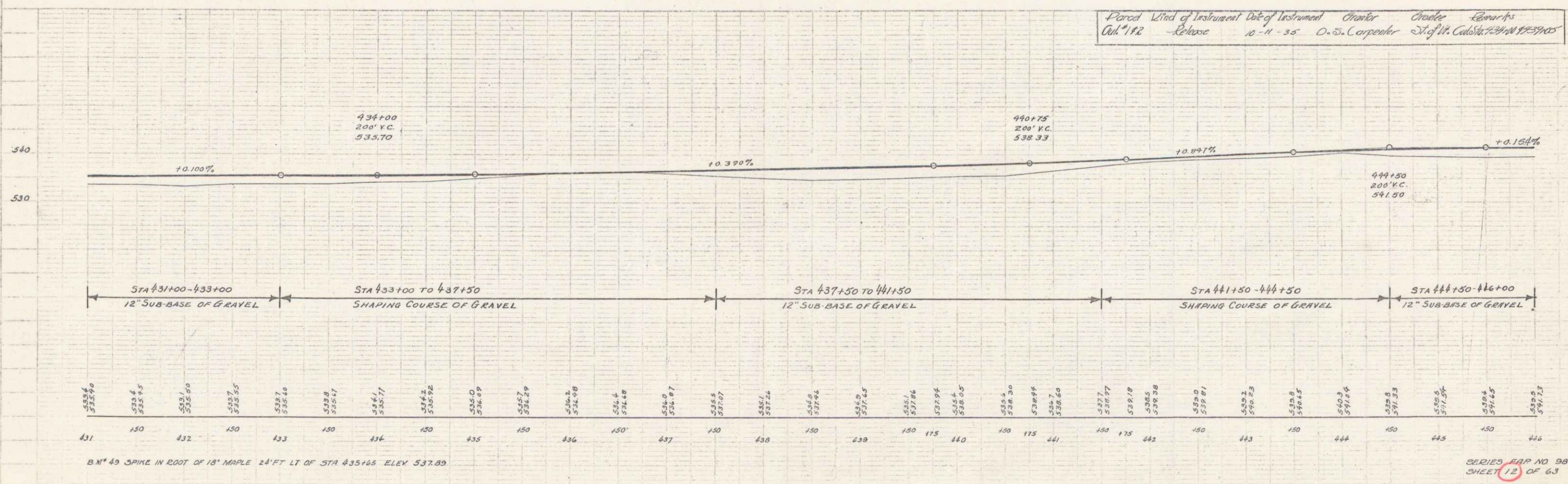
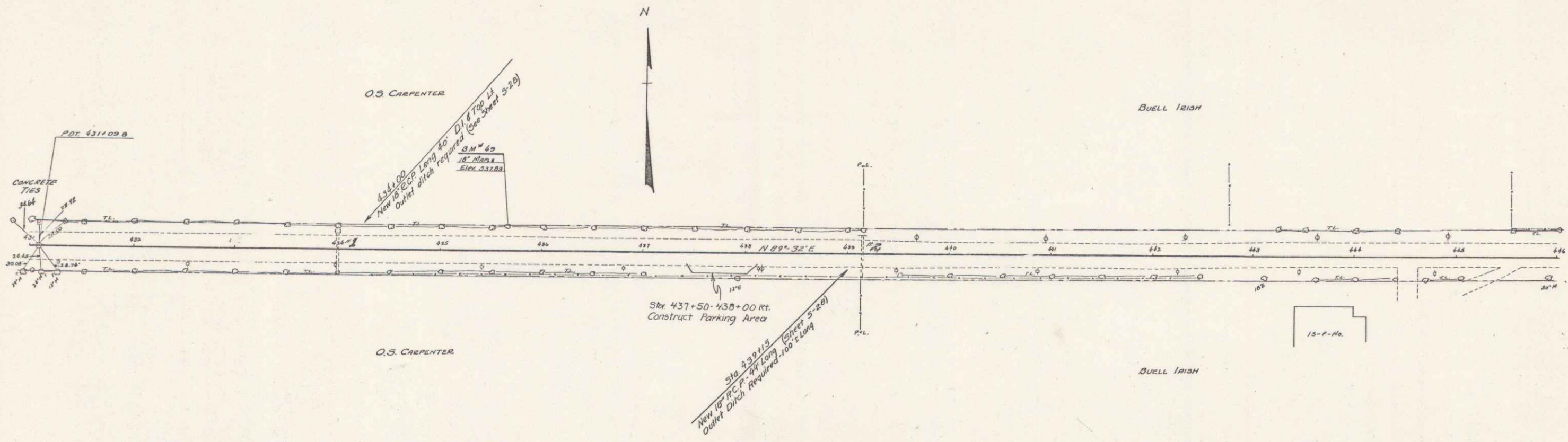
3.11' 53 SPIKE IN ROOT OF 24' MAPLE 24' FT RT OF STA 399+94 ELEV 515.76
 BM 52 SPIKE IN ROOT OF 12' MAPLE 22.5 FT RT OF STA 410+07 ELEV 515.34



Parad. of Instrument Date of Instrument Consider Grantee Remarks
 Cal #1 Release 10-14-35 O.S. Carpenter July 11th Cal. Sta. 419+50

BM #31 SPIKE IN ROOT OF 18" BASSWOOD 25.5 FT. LT. OF STA 418+24 ELEV. 513.17
 BM #50 SPIKE IN ROOT OF 18" MAPLE 24 FT. LT. OF STA 427+24 ELEV. 528.20

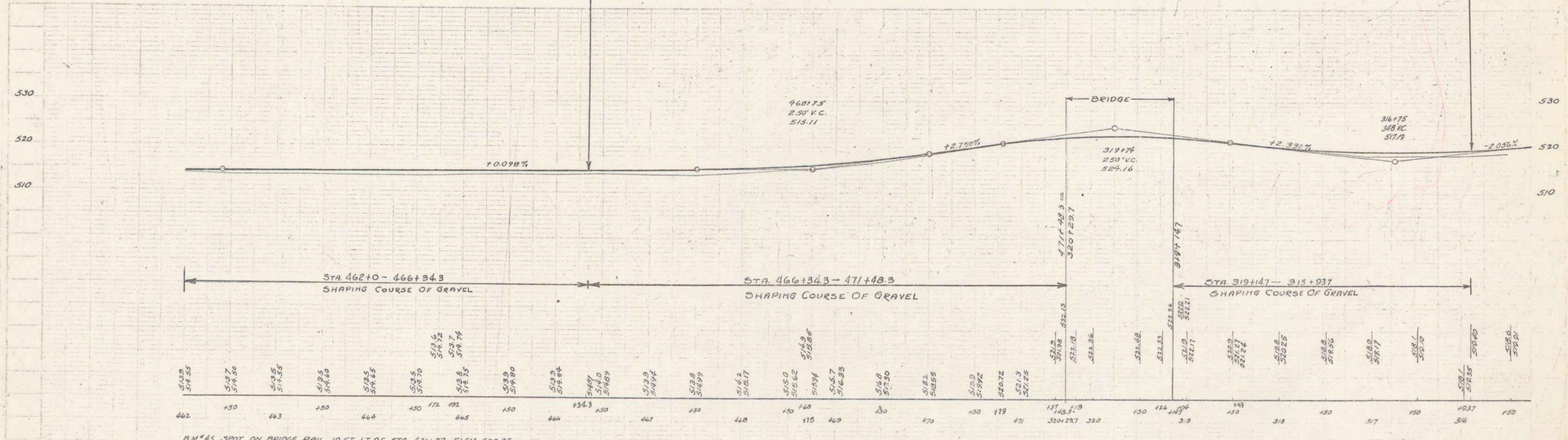
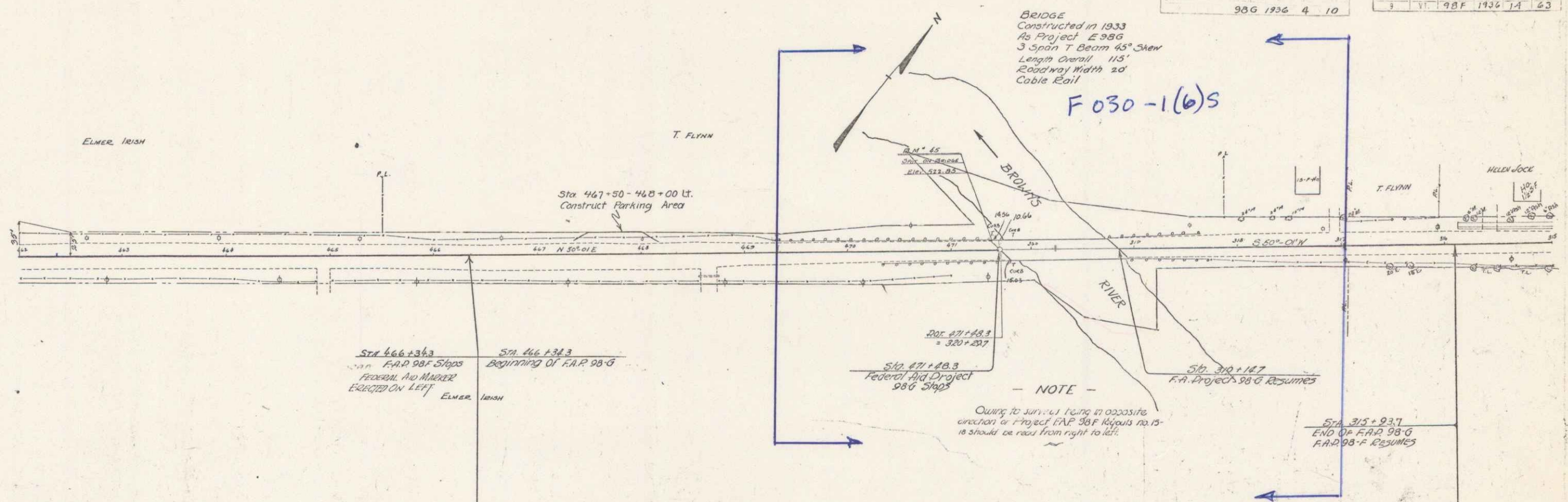
SERIES 98F NO 98F
 SHEET 11 OF 63



10

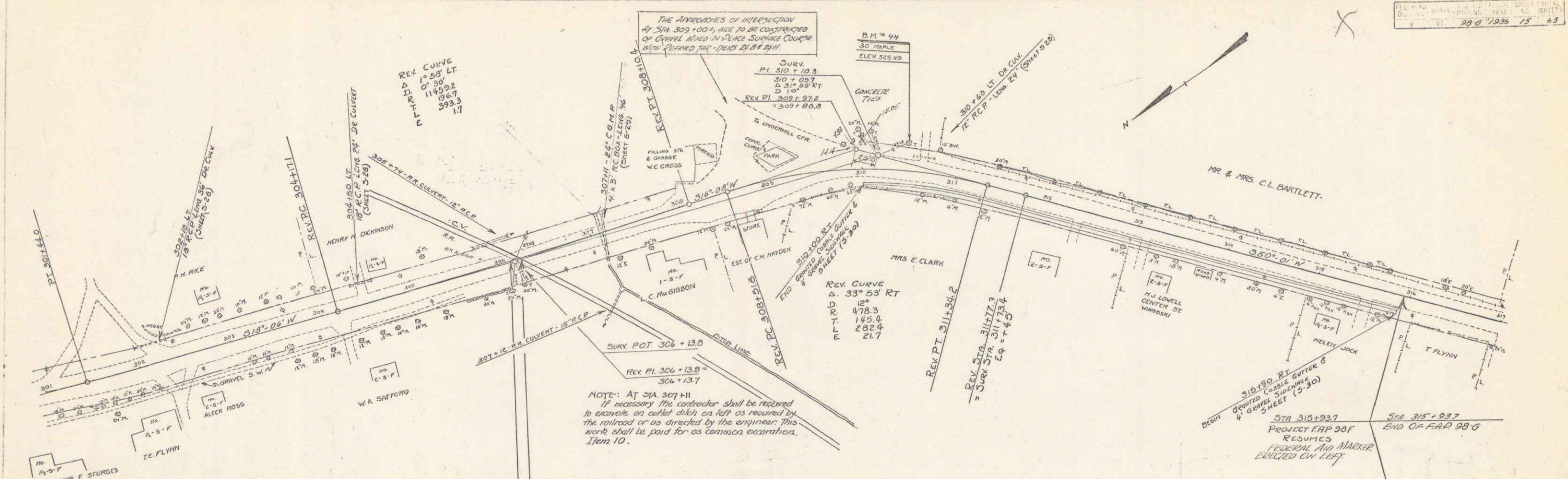
BRIDGE
 Constructed in 1933
 As Project E 98G
 3 Span T Beam 45° Skew
 Length Overall 115'
 Roadway Width 20'
 Cable Rail

F 030-1(6)S

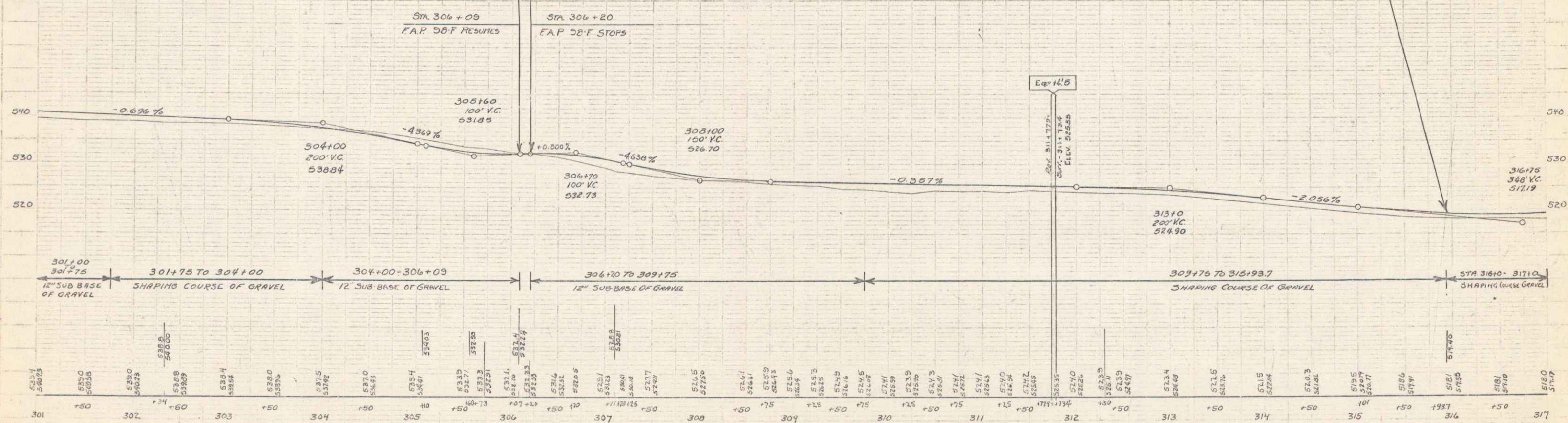


B.M. 45 SPOT ON BRIDGE RAIL 10 FT. LT. OF STA. 471+37 ELEV. 522.85

Series F.A.P. No. 98G
 4-0-10
 SERIES F.A.P. NO. 98-F
 SHEET 1A OF 63

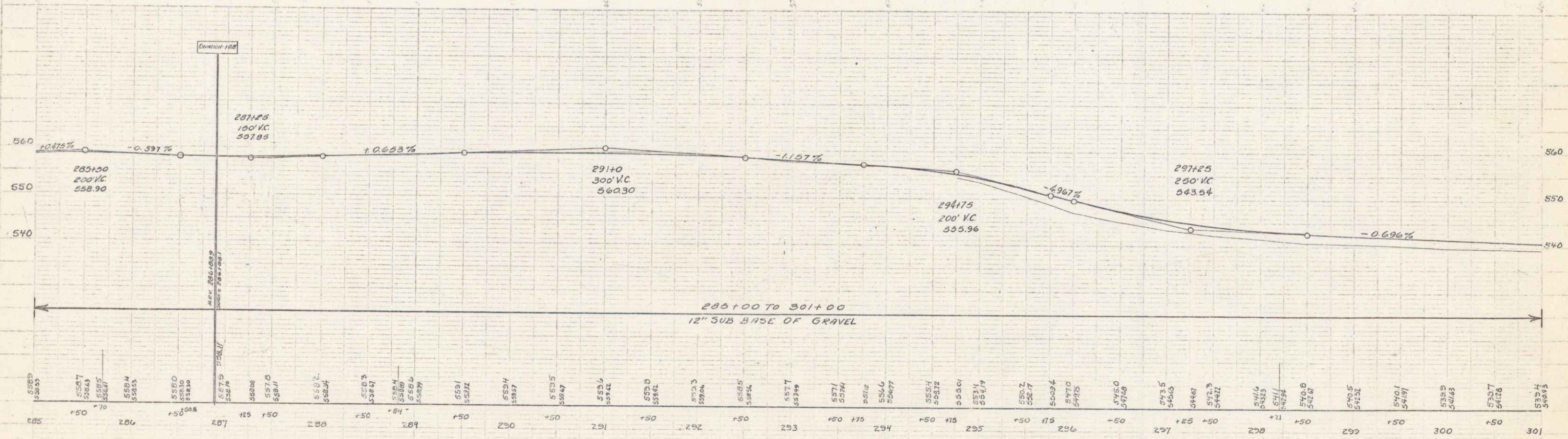
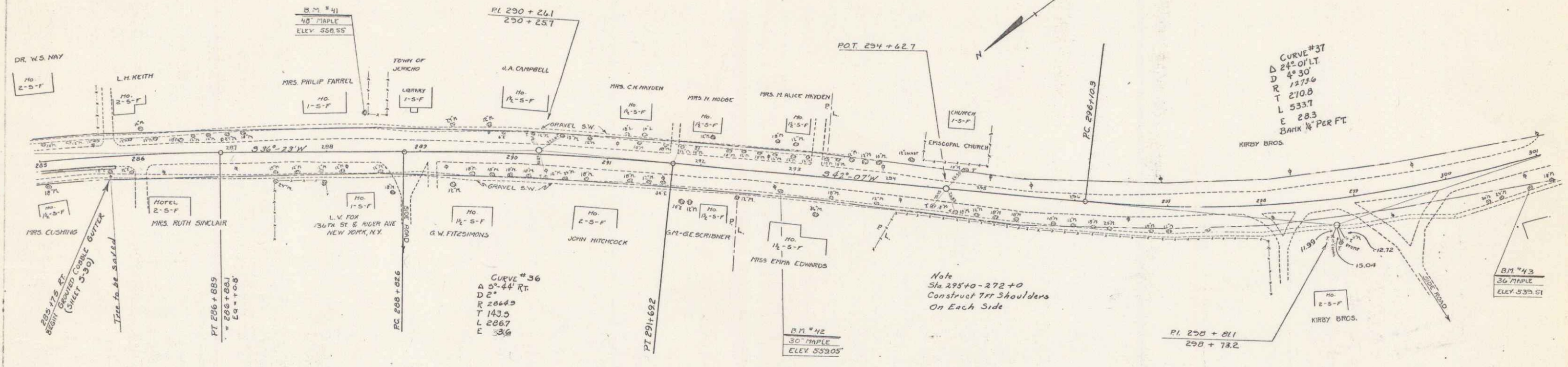


NOTE: AT STA 307+11
 IF NECESSARY THE CONTRACTOR SHALL BE REQUIRED TO EXCAVATE AN CUTTER DITCH ON LEFT AS REQUIRED BY THE RAILROAD OR AS DIRECTED BY THE ENGINEER. THIS WORK SHALL BE PAID FOR AS COMMON EXCAVATION ITEM 10.

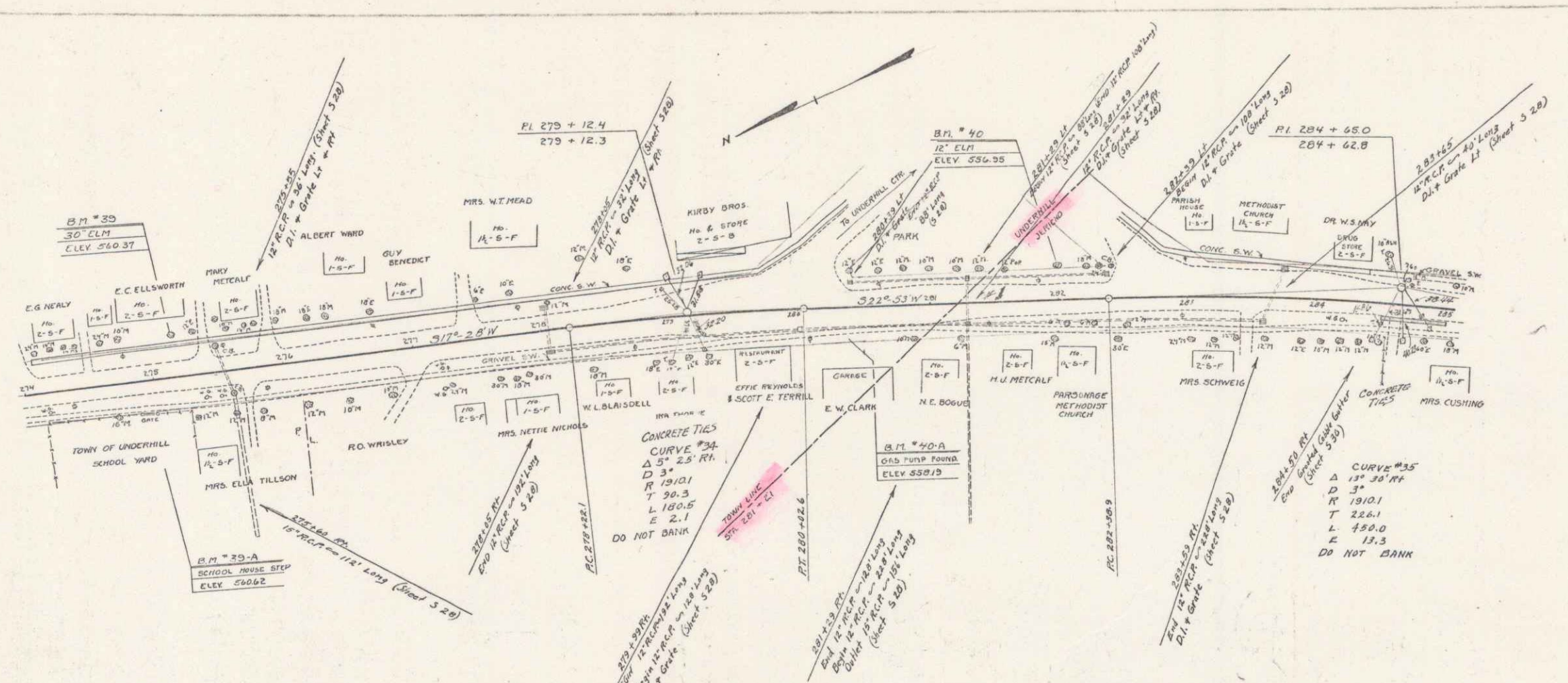


BM #44 Spike in root 30' Maple 345' Lt. Sta. 310 + 47 ; Elev. 525.49

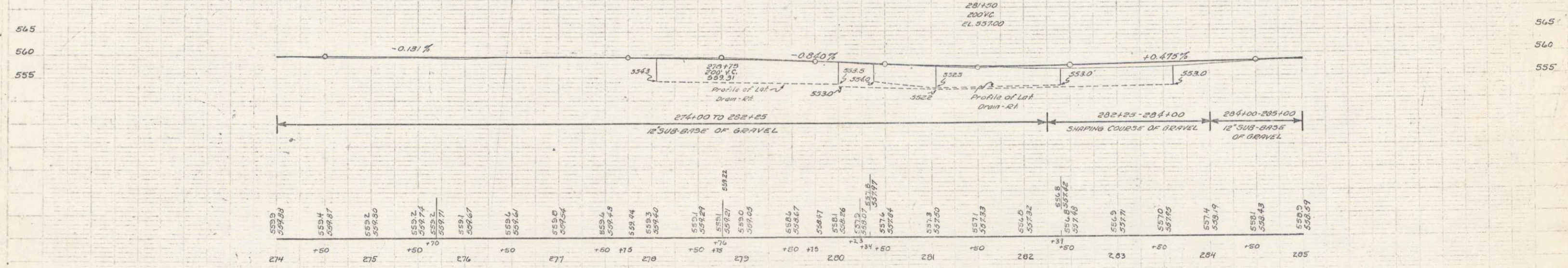
SERIES FAP NO 50-F
 SHEET 13 OF 63



B.M. #41; Spike in root 40' Maple - 40' Lt. Sta 288 - 42 - Elev. 538.55
 B.M. #42; Spike in root 30' Maple - 10.5' Rt. Sta 292 - 85 - Elev. 539.05
 B.M. #43; Spike in root 36' Maple - 31.0' Rt. Sta 300 - 82 - Elev. 539.51



Parcel Kind of Date of Granter Grantee Recorded Record
 Cal. # 1 Release 10-11-35 N.E. Bogue J. of U. Cal. Sta. 284-40



BM *39 - Spike in roof 30' Elm 310 Lt Sta. 275 + 17 - Elev. 560.37
 BM *39-A - PAINT SPOT ON SCHOOL HOUSE STEP 710 RT Sta. 275 + 00 ELEV. 560.62
 BM *40 - Spike in roof 12' Elm 240 Lt Sta. 282 + 00 Elev. 556.95
 BM *40-A - Paint Spot On Conc. Gas Pump Found 235 Rt. Sta. 280 + 34 Elev. 558.19

