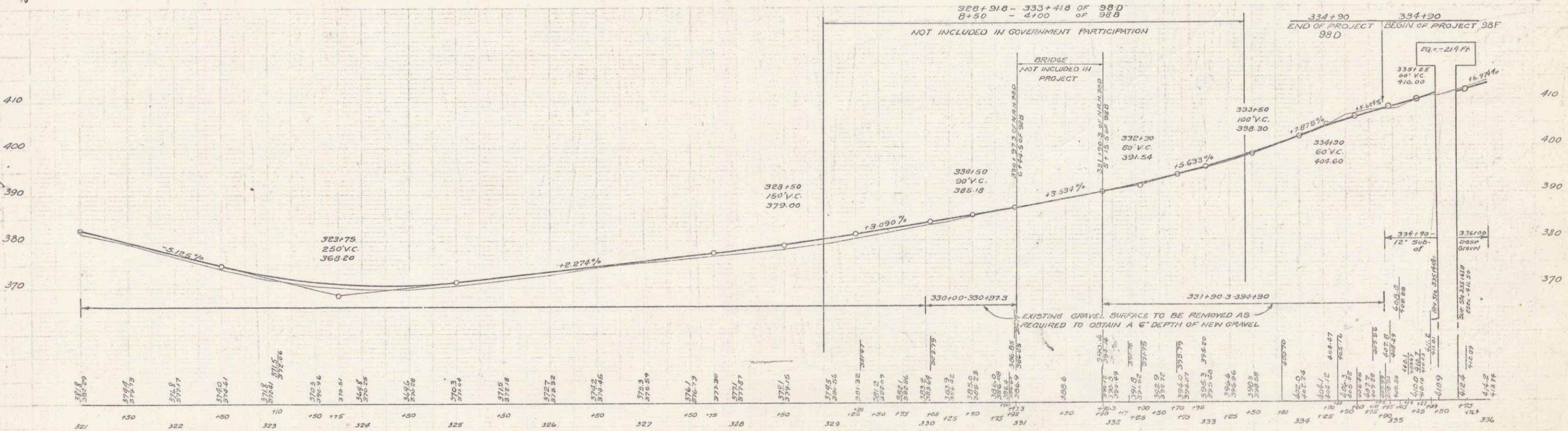
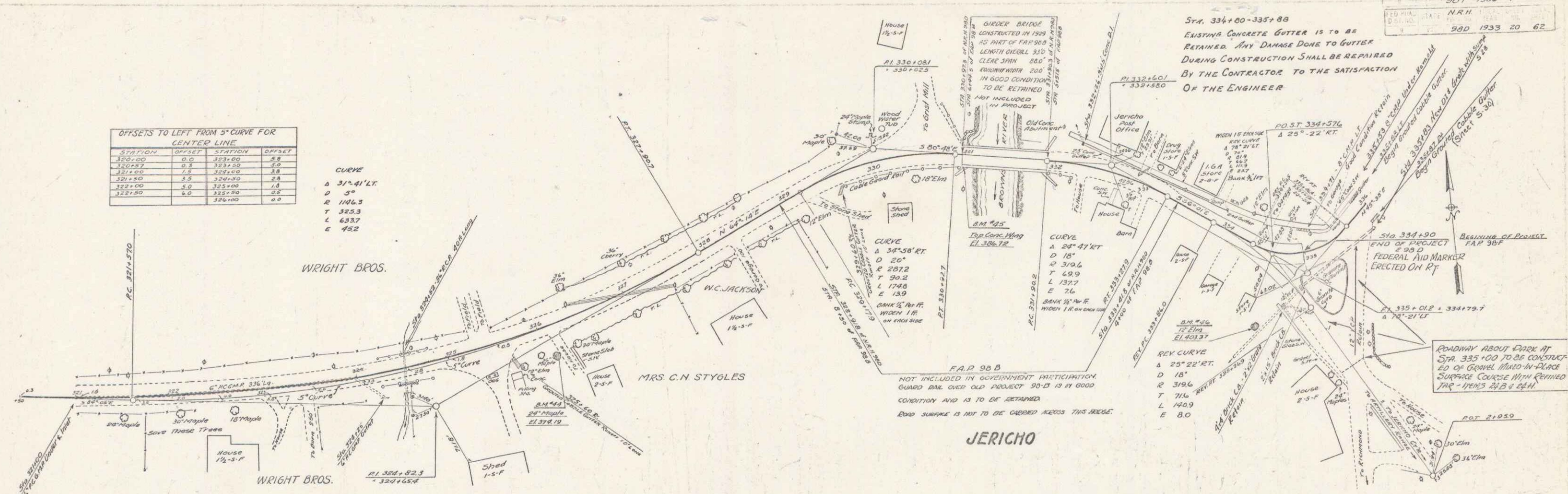


OFFSETS TO LEFT FROM 5° CURVE FOR CENTER LINE

STATION	OFFSET	STATION	OFFSET
320+00	0.0	323+00	5.8
321+00	0.8	324+00	7.0
322+00	1.8	325+00	8.8
323+00	3.5	326+00	11.0
324+00	6.0	327+00	13.8
325+00	9.0	328+00	17.0
326+00	12.0	329+00	20.8

CURVE  
 A 31° 41' LT  
 D 57  
 E 1106.3  
 T 325.3  
 L 633.7  
 E 452



BM #44 SPIKE IN ROOT 36" MAPLE 30' RT STA 326+08 ELEV 374.19  
 B.M. #45 TOP CONCRETE WING 13' RT STA 330+97 ELEV 386.72  
 B.M. #46 SPIKE IN ROOT 18" ELM 60' RT STA 0+59 JERICO CENTER ROAD ELEV 403.37

2