

INDEX OF SHEETS

SHEET NO.	TITLE PAGE	DATE
1	TYPICAL SHEET OF IMPROVEMENT, 3" BIT. CONC. PAV'T. MOD.	
2	SUMMARY OF ITEMS & DRAINAGE	
3-4	BLANK	
5	GRADES & EARTHWORKS	
6	BLANK	
7	PLAN & PROFILE	
8-9	BLANK	
10	B.R. SERIES 100 (100-113)	
11-24	A-61 DRILLING & BLASTING OF SOLID ROCK SUBGRADE	8/7/67 R
25	B-1 BANKING	7/17/67 R
26	B-5 TYPICAL SLOPE GRADING	3/10/65
27	B-6 MUCK EXCAVATION	3/10/65
28	B-10 EMBANKMENT ON A SLOPE	3/10/65
29	B-11 SLOPE STABILIZATION	3/10/65
30	D-2 C.R.M. UNDERDRAIN	7/25/67 R
31	D-3 JUTE MATTING	7/19/67 R
32	D-4 METAL END SECTIONS	8/11/66 R
33	E-32 CONSTRUCTION APPROACH SIGNS	11/6/67
34	E-33 BRIDGE CONSTRUCTION APPROACH SIGNS	11/6/67
35	E-34 ON PROJECT CONSTRUCTION SIGNS	5/3/67 R
36	G-1 STEEL BEAM GUARD RAIL	11/2/67 R
37	G-3 ANCHORS FOR STEEL BEAM GUARD RAIL	9/11/66 R
38	G-4 PLANK GUARD RAIL	12/30/65 R
39	G-10 STEEL BEAM GUARD RAIL AT BRIDGE APPROACH	9/18/67 R
40	J-1 PROJECT MARKERS	3/10/65
41	BLANK	
42	SCB-30-65 W.F. BEAM BRIDGES	2/24/66 R
43	SCB-01-65 DETAILS OF W.F. BEAM BRIDGES	2/14/66 R
44	SCB-02-65 DET. B,C DETAILS OF W.F. BEAM BRIDGES	2/14/65 R
45	SCB-04-65 DETAILS OF W.F. BEAM BRIDGES	2/14/65 R
46	SCB-06-65 DET. A,B,C,F DETAILS OF W.F. BEAM BRIDGES	3/7/66 R
47	SCB-07-65 DET. C,D,E DETAILS OF W.F. BEAM BRIDGES	2/14/65 R
48	SCB-08-65 DET. A,B DETAILS OF W.F. BEAM BRIDGES	2/14/65 R
49	SCB-09-65 DET. A DETAILS OF W.F. BEAM BRIDGES	2/14/65 R
50	SB-R1-64 BRIDGE RAILING SHEET 1 OF 2	12/5/66 R
51	SB-R1-64 BRIDGE RAILING SHEET 2 OF 2	11/8/66 R
52	BLANK	
53-5Z	MAINLINE X SECTIONS	
58-63	TOWN ROAD & 32 X SECTIONS	

(To Be Returned To R.O.W. Division)

TOWN FILE

RIGHT-OF-WAY DIVISION

PERPETUAL

Town of W. H. S.

STATE OF VERMONT
DEPARTMENT OF HIGHWAYS

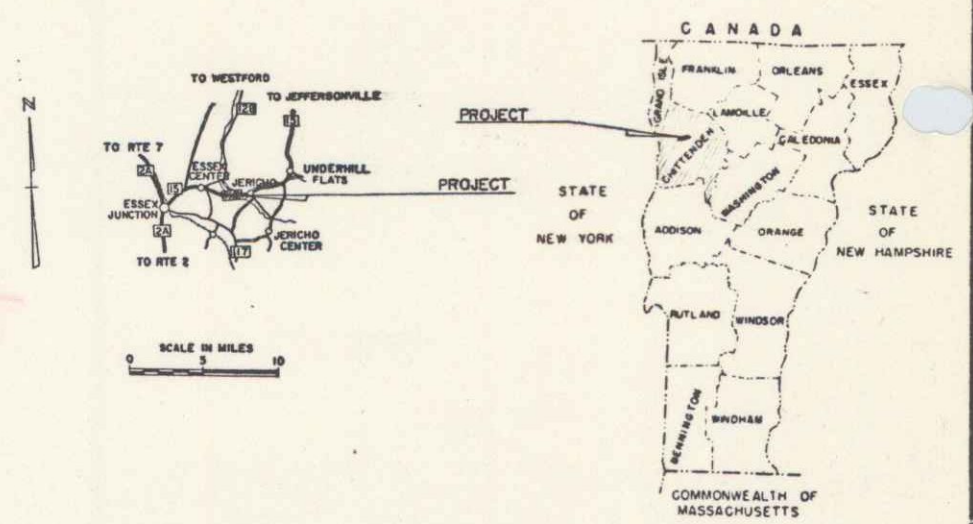
PROPOSED IMPROVEMENT

BETTERMENT PROJECT

TOWN OF ESSEX Pin# COR 713
COUNTY OF CHITTENDEN
VT. ROUTE 15
CAMBRIDGE-ESSEX JCT. ROAD

BEGINNING AT A POINT APPROXIMATELY 0.7 OF A MILE WESTERLY OF THE ESSEX-JERICO TOWN LINE AND EXTENDING WESTERLY 0.208 OF A MILE

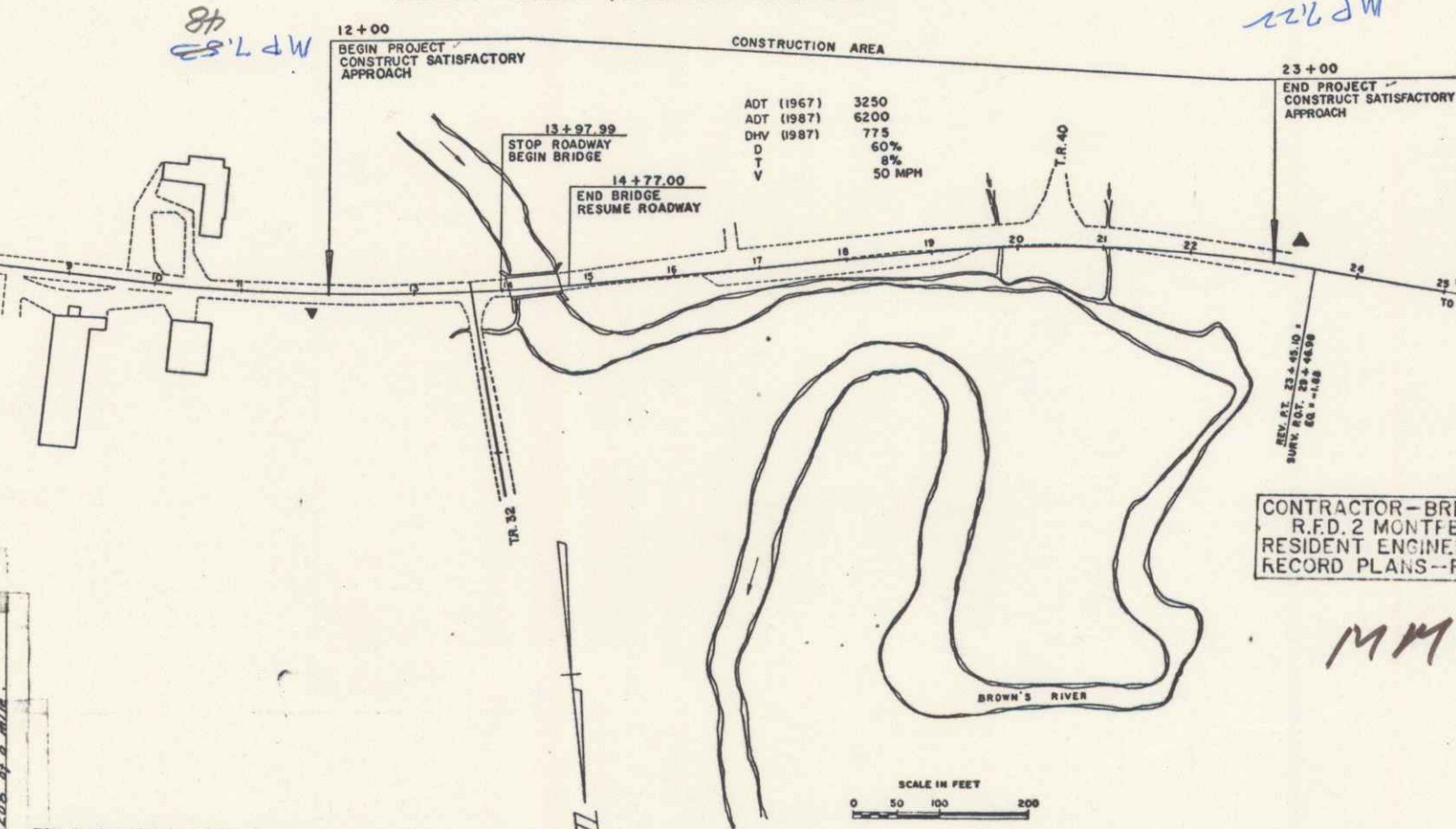
LENGTH OF ROADWAY 1,020.99 FEET=0.193 MILES
LENGTH OF BRIDGE 79.01 FEET=0.015 MILES
LENGTH OF PROJECT 1,100.00 FEET=0.208 MILES



RECORD PLANS

PROJECT NAME & NO.	TYPE	AREA
ESSEX BP 030-1-6659	BIT. CONC. PAV'T	2,930 SY.

SUB-BASE OF GRAVEL, GRAVEL BACKFILL & SHOULDERS - CAMBELL PIT JERICO, VT.
CRUSHED STONE PLANT MIX BASE COURSE & BIT. CONC. PAV'T. - VERMONT PAVING CORP. - WILLISTON, VT.
REFINED TAR - KOPPERS CO. INC. - PORTLAND, ME.
CUT BACK ASPH. - MOBIL OIL CORP. - E. PROVIDENCE, R.I.
CONCRETE CLASS 'A' & 'B' - S.T. GRISWOLD - WILLISTON, VT.
REINFORCING STEEL - BETHLEHEM STEEL CORP. - EPHRATA, PA.
STRUCTURAL STEEL - VERMONT STRUCTURAL STEEL CORP. - BURLINGTON, VT.
METAL PIPE CULVERT - NORTHEASTERN CULVERT CORP. - WESTMINSTER, VT.
GUARD RAIL ITEMS - S.T. GRISWOLD CO. - WILLISTON, VT.



RIGHT-OF-WAY DIVISION

TOWN FILE

PERPETUAL

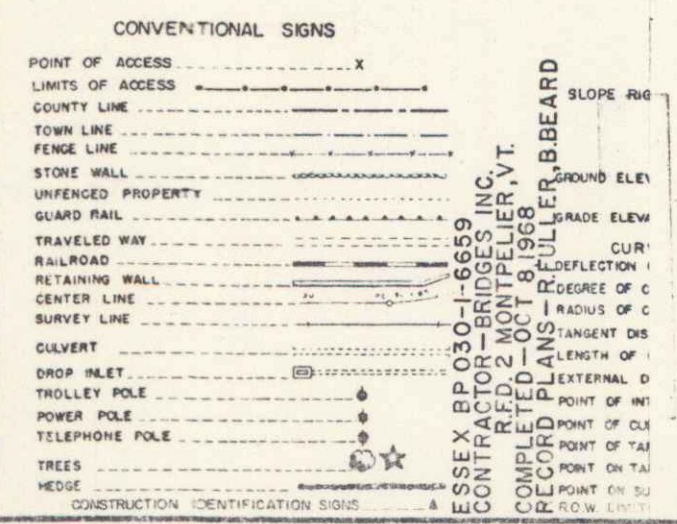
Town of W. H. S.

(To Be Returned To R.O.W. Division)

CONTRACTOR - BRIDGES INC. - R.F.D. 2 MONTFELIER, VT.
RESIDENT ENGINEER - W. JARVIS
RECORD PLANS - R. FULLER

CONTRACT DATED JAN. 22, 1968
STARTED APR. 4, 1968
COMPLETED OCT. 8, 1968
ACCEPTED OCT. 8, 1968

MM 0722-0753



ESSEX
PROJECT NUMBER BP 030-1-6659
TYPE BIT. CONC. PAV'T.
CONTRACTOR BRIDGES INC.
R.F.D. 2 MONTFELIER, VT.
LOCATION Beginning at a point approximately 0.7 of a mile westerly of the Essex-Jericho Town Line and extending westerly 0.208 of a mile.

FOR RIGHT OF WAY DETAILS, SEE RIGHT OF WAY PLANS FOR THIS PROJECT.

THESE PLANS ARE SUBJECT TO SUCH REVISIONS AS MAY BE REQUIRED BY THE BUREAU OF PUBLIC ROADS OR THE COMMISSIONER OF HIGHWAYS.

CONSTRUCTION IS TO BE CARRIED ON IN ACCORDANCE WITH THESE PLANS AND THE STANDARD SPECIFICATIONS FOR HIGHWAY AND BRIDGE CONSTRUCTION DATED APRIL, 1964, AS APPROVED BY THE BUREAU OF PUBLIC ROADS ON OCTOBER 12, 1964, INCLUDING ALL SUBSEQUENT APPROVED REVISIONS AND SUCH REVISED SPECIFICATIONS AND SPECIAL PROVISIONS AS ARE INCORPORATED IN THESE PLANS.

NOTE: ANY FURTHER INFORMATION CONCERNING THESE PLANS SHOULD BE OBTAINED FROM THE FIELD ENGINEER OR THE DISTRICT ENGINEER.

DEPARTMENT OF TRANSPORTATION
BUREAU OF PUBLIC ROADS

APPROVED _____ DATE _____

DIVISION ENGINEER _____ DATE _____

PROJECT: BP NO. 030-1-6659

SHEET 1 OF 65 SHEETS

APPROVED	APPROVED	APPROVED	APPROVED	APPROVED	APPROVED
<i>C.P. Carter</i> DISTRICT ENGINEER	<i>R. F. Lewis</i> CONTRACT ENGINEER	<i>W. Jarvis</i> RESIDENT ENGINEER	<i>G. M. Lane</i> DISTRICT ENGINEER	<i>E. R. Stehney</i> DISTRICT ENGINEER	<i>R. H. Condit</i> DISTRICT ENGINEER
DATE 8/15/67	DATE 8/19/67	DATE 8/17/67	DATE 8/17/67	DATE 8/17/67	DATE 8/18/67

INDEX OF SHEETS

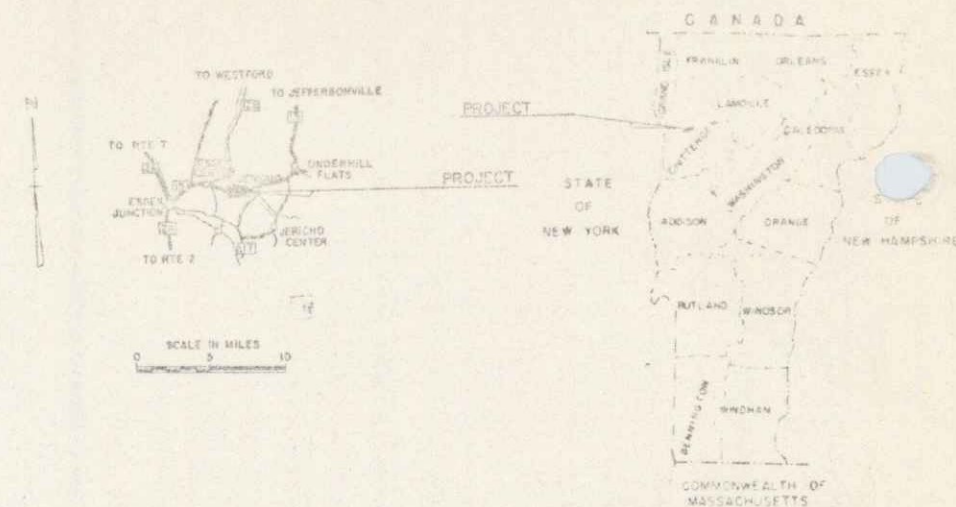
STATE OF VERMONT DEPARTMENT OF HIGHWAYS

PROPOSED IMPROVEMENT

TOWN OF ESSEX COUNTY OF CHITTENDEN VT. ROUTE 15 CAMBRIDGE-ESSEX JCT. ROAD

BEGINNING AT A POINT APPROXIMATELY 0.7 OF A MILE WESTERLY OF THE ESSEX-JERICHO TOWN LINE AND EXTENDING WESTERLY 0.208 OF A MILE

LENGTH OF ROADWAY 1,219.11 FEET 0.23 MILES LENGTH OF BRIDGE 79.01 FEET 0.015 MILES LENGTH OF PROJECT 1,298.12 FEET 0.246 MILES



RIGHT-OF-WAY DIVISION TOWN FILE PERMITAL Form of Vt. 15 (To Be Returned To R.O.W. Division)

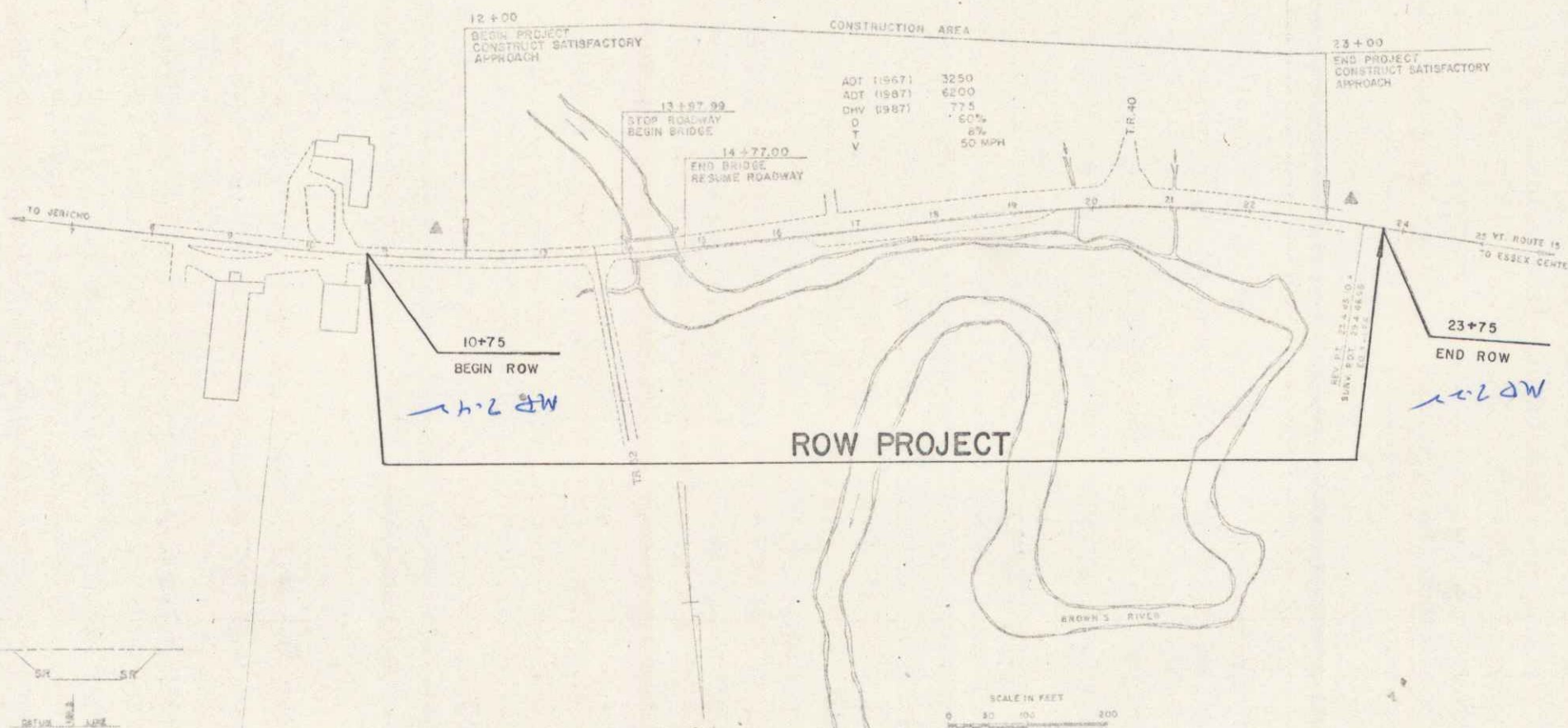


Table of conventional signs and their symbols, including point of access, limits of access, county line, town line, fence line, stone wall, unfaced property, guard rail, traveled way, railroad, retaining wall, and center line.

Table of slope rights and curve data, including ground elevation, grade, curve data (deflection of angle, degree of curve, radius of curve, tangent distance, length of curve, external distance), point of introduction, point of tangency, point of intersection, and point of curvature.

FOR RIGHT OF WAY DETAILS, SEE RIGHT OF WAY PLANS FOR THIS PROJECT.

ROW PLANS

THESE PLANS ARE SUBJECT TO SUCH REVISIONS AS MAY BE REQUIRED BY THE BUREAU OF PUBLIC ROADS ON THE COMPLETION OF THE PROJECT.

Approval and signature block for the Department of Transportation, Bureau of Public Roads, including fields for approval, date, and project number.

Project information box containing the name 'ESSEX', project number '3P 050-1-6659', and 'VICTOR'S BRIDGE'.

Approval and signature block for the project, including fields for approval, date, and project number.

DIST. # 5 PLANS 2

STATE OF VERMONT
DEPARTMENT OF HIGHWAYS
RIGHT-OF-WAY PLANS
DETAIL SHEET
OF

TABLE OF PROJECT PROPERTY ACQUISITION

PARCEL NO.	GRANTOR	SHEET NO.	BEGINNING STATION	ENDING STATION	TAKING	REM.	RIGHTS	TITLE TAKEN	DATE	TOWN OR CITY RECORDED	BK.	PG.	REMARKS
1	JEAN L. WHITCOMB	7	10+75 RT. 20+26 LT.	23+75 LT. 20+78 LT.	4.9 A±		RIGHT TO RECONSTRUCT TR 40 SLOPE (T)(0.01A±) CHANNEL (P)(.06A±) CHANNEL (P)(.70A±) SLOPE (T)(0.02A±)						

TABLE OF REVISIONS

REVISION NO.	SHEET NO.	DESCRIPTION OF REVISION	DATE	MADE BY	APPROVED BY

MADE BY: DRR DATE 11-24-67

CHECKED BY: NBB DATE 11-24-67

----- PRESENT R.O.W.
 //---// TAKING WITHOUT ACCESS
 //---P---// TAKING WITHOUT ACCESS ALONG PROPERTY LINES
 ----- TAKING WITH ACCESS
 (P) PERMANENT EASEMENT
 (T) TEMPORARY EASEMENT

LEGEND

SR-----SR SLOPE RIGHTS
 P-----P PROPERTY LINE
 ---Δ---Δ---Δ--- TOP OF CUT
 ---O---O---O--- TOE OF SLOPE

APPROVED Thomas C. Bernathy DATE 11-27-67
CHIEF OF ACQUISITION

APPROVED G.M. Lane DATE 11/27/67
HIGHWAY ENGINEER

APPROVED H.P. Reagan DATE 11-27-67
R.O.W. DIRECTOR

PROJECT ESSEX BP

NO. 030-1-6659

SHEET 3 OF 5

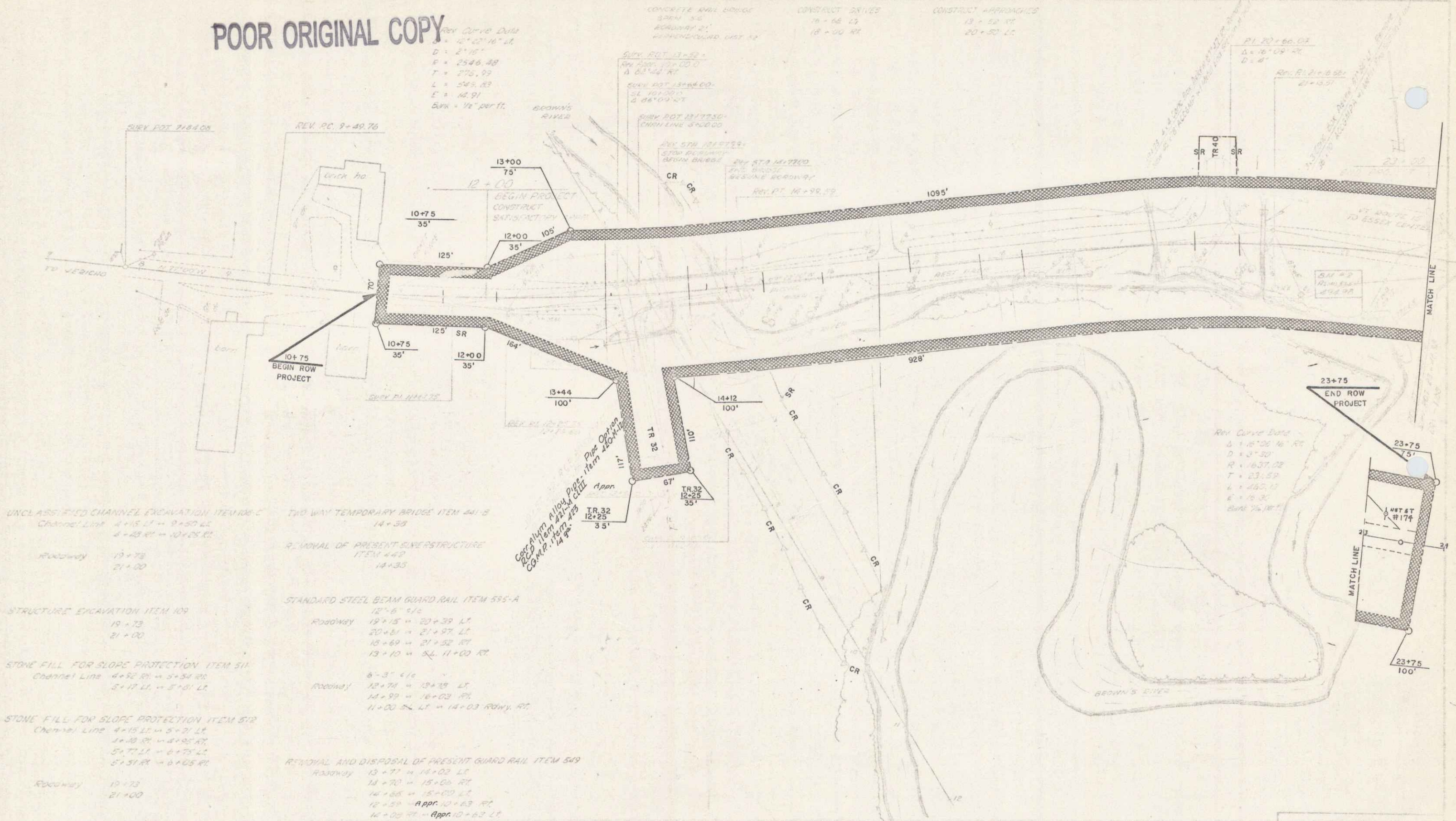
POOR ORIGINAL COPY

REV. CURVE DATA
 Δ = 121° 46' 31"
 D = 217.17'
 R = 2546.38'
 T = 270.93'
 L = 545.83'
 E = 42.91'
 S_{pk} = 1/4" per ft.

CONCRETE RAIL BRIDGE
 20x11.32'
 ROADWAY 21'
 HORIZONTAL CURVE 12'

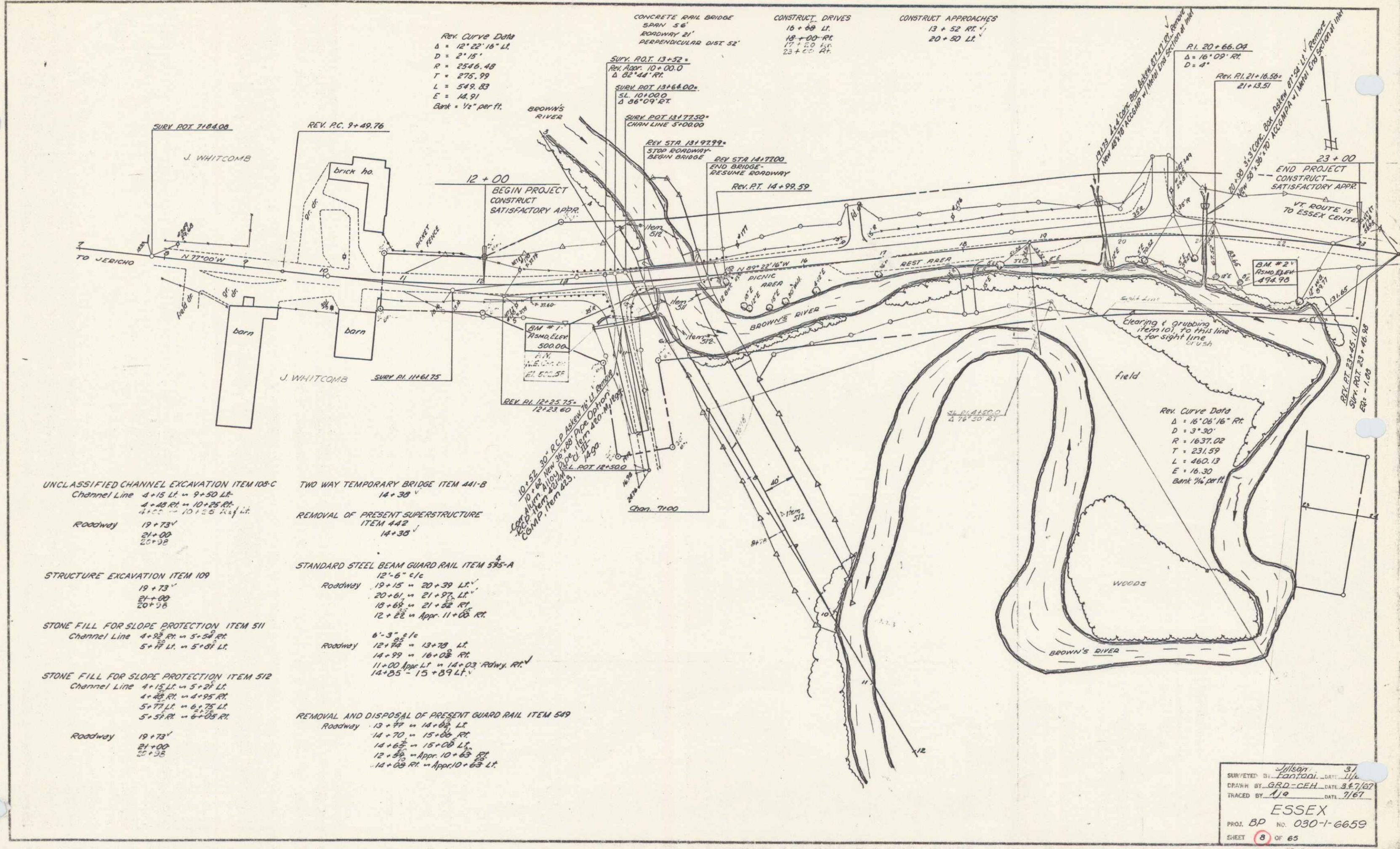
CONSTRUCT DRIVES
 18-16 LT
 18-20 RT

CONSTRUCT APPROACHES
 18-12 RT
 20-20 LT



- | | |
|---|--|
| UNCLASSIFIED CHANNEL EXCAVATION ITEM 100-C
Channel Line 4+15 LT = 9+20 LT
4+25 RT = 10+20 RT | TWO WAY TEMPORARY BRIDGE ITEM 441-B
14+30 |
| Roadway 19+75
21+00 | REMOVAL OF PRESENT SUPERSTRUCTURE
ITEM 442
14+35 |
| STRUCTURE EXCAVATION ITEM 109
19+75
21+00 | STANDARD STEEL BEAM GUARD RAIL ITEM 595-A
12'-6" 5/8"
Roadway 19+15 = 20+39 LT
20+51 = 21+77 LT
13+69 = 21+32 RT
13+10 = 24 11+00 RT |
| STONE FILL FOR SLOPE PROTECTION ITEM 511
Channel Line 4+52 RT = 5+34 RT
5+17 LT = 5+10 LT | 6'-3" 4/8"
Roadway 12+74 = 13+29 LT
14+99 = 16+03 RT
11+00 24 LT = 14+03 ROWY RT |
| STONE FILL FOR SLOPE PROTECTION ITEM 512
Channel Line 4+15 LT = 5+21 LT
4+20 RT = 4+25 RT
5+71 LT = 6+75 LT
5+31 RT = 6+25 RT | REMOVAL AND DISPOSAL OF PRESENT GUARD RAIL ITEM 549
Roadway 13+77 = 14+02 LT
14+70 = 15+00 RT
14+68 = 15+00 LT
12+29 = 12+29 RT
14+00 RT = 14+00 RT |

ESSEX
 PROJ. NO. 130-1-5000
 SHEET 4 OF 5



REV. CURVE DATA
 $\Delta = 12^\circ 22' 16''$ LT
 $D = 2' 15''$
 $R = 2546.48$
 $T = 275.99$
 $L = 549.83$
 $E = 14.91$
 Bank $\frac{1}{2}$ per ft.

CONCRETE RAIL BRIDGE
 SPAN 36'
 ROADWAY 21'
 PERPENDICULAR DIST 52'

CONSTRUCT DRIVES
 16+59 LT
 18+00 RT
 17+50 LT
 23+00 RT

CONSTRUCT APPROACHES
 13+52 RT
 20+50 LT

REV. CURVE DATA
 $\Delta = 16^\circ 06' 16''$ RT
 $D = 3' 30''$
 $R = 1637.02$
 $T = 231.59$
 $L = 460.13$
 $E = 16.30$
 Bank $\frac{1}{2}$ per ft.

- | | |
|---|---|
| UNCLASSIFIED CHANNEL EXCAVATION ITEM 108-C
Channel Line 4+15 LT to 9+50 LT
4+28 RT to 10+25 RT
4+52 to 10+15 RT LT | TWO WAY TEMPORARY BRIDGE ITEM 441-B
14+30 |
| Roadway 19+73
21+00
20+38 | REMOVAL OF PRESENT SUPERSTRUCTURE
ITEM 442
14+30 |
| STRUCTURE EXCAVATION ITEM 109
19+73
21+00
20+38 | STANDARD STEEL BEAM GUARD RAIL ITEM 525-A
12'-6" c/c
Roadway 19+15 to 20+39 LT
20+61 to 21+97 LT
18+63 to 21+52 RT
12+28 to Appr. 11+08 RT |
| STONE FILL FOR SLOPE PROTECTION ITEM 511
Channel Line 4+93 RT to 5+52 RT
5+77 LT to 5+87 LT | Roadway 6'-3" c/c
12+72 to 13+78 LT
14+99 to 18+08 RT
11+00 Appr. LT to 14+03 Rdwy. RT
14+05 to 15+89 LT |
| STONE FILL FOR SLOPE PROTECTION ITEM 512
Channel Line 4+15 LT to 5+27 LT
4+48 RT to 4+95 RT
5+77 LT to 6+75 LT
5+57 RT to 6+08 RT | REMOVAL AND DISPOSAL OF PRESENT GUARD RAIL ITEM 549
Roadway 13+97 to 14+08 LT
14+70 to 15+08 RT
14+62 to 15+08 LT
12+96 to Appr. 10+89 RT
14+08 RT to Appr. 10+68 LT |
| Roadway 19+73
21+00
20+38 | |

ESSEX
 PROJ. BP NO. 030-1-6659
 SHEET 8 OF 65
 SURVEYED BY: Jilson
 DRAWN BY: GRD:CEH
 TRACED BY: AJO
 DATE: 7/67

