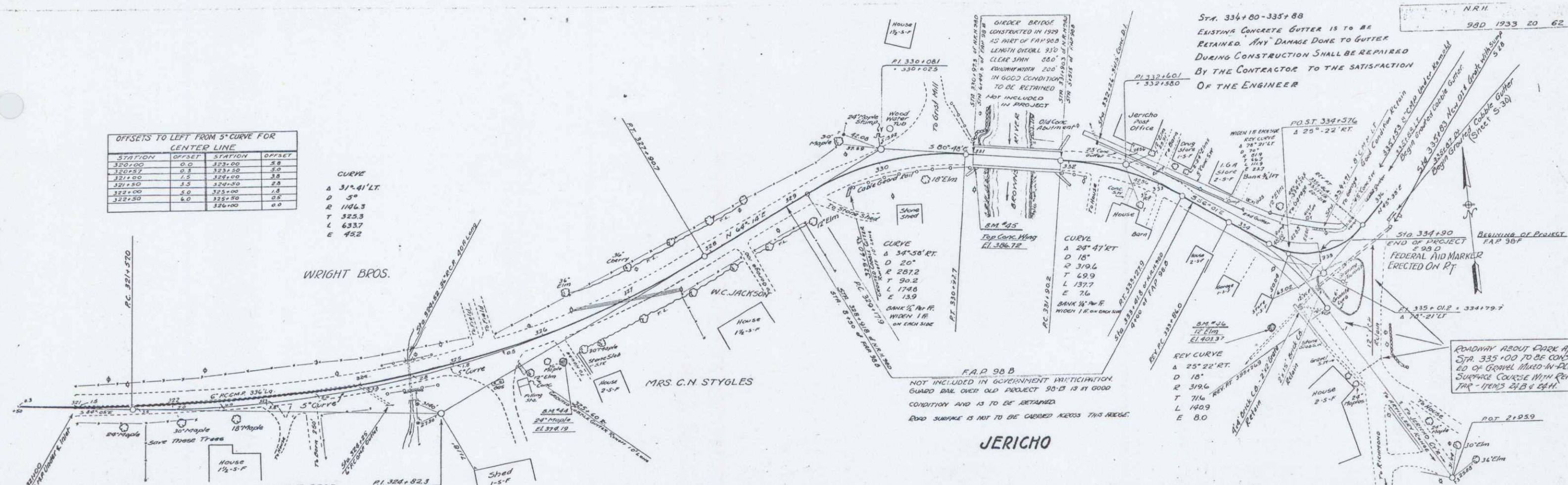


OFFSETS TO LEFT FROM 5-CURVE FOR CENTER LINE			
STATION	OFFSET	STATION	OFFSET
320+00	0.0	323+50	0.0
320+25	0.5	323+25	0.5
321+00	1.5	322+50	1.5
321+50	2.5	322+00	2.5
322+00	3.0	321+50	3.0
322+50	4.0	321+00	4.0

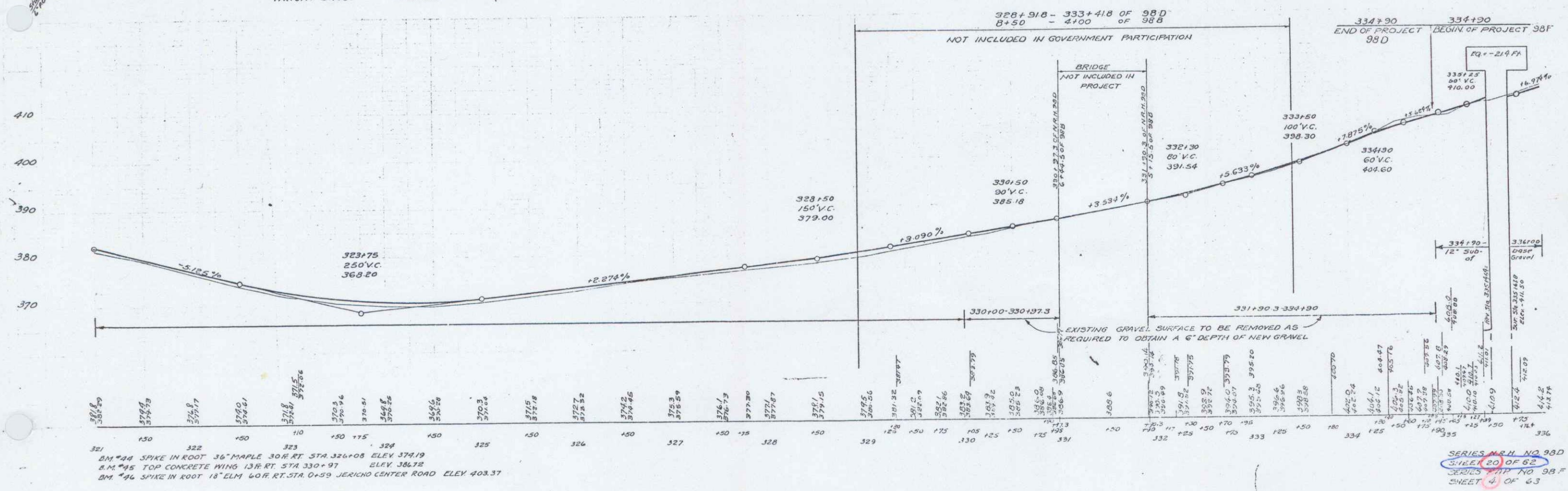
CURVE
 A 31'-4" LT
 D 3°
 E 146.3
 T 325.3
 L 633.7
 E 452



STA. 334+00-335+88
 EXISTING CONCRETE GUTTER IS TO BE
 RETAINED. ANY DAMAGE DONE TO GUTTER
 DURING CONSTRUCTION SHALL BE REPAIRED
 BY THE CONTRACTOR TO THE SATISFACTION
 OF THE ENGINEER

F.A.P. 98 B
 NOT INCLUDED IN GOVERNMENT PARTICIPATION
 GUARD RAIL OVER OLD PROJECT 98-B IS IN GOOD
 CONDITION AND IS TO BE RETAINED.
 ROAD SURFACE IS NOT TO BE CARRIED ACROSS THIS RIDGE.

JERICHO



BM #44 SPIKE IN ROOT 36" MAPLE 30R RT STA. 326+08 ELEV 374.19
 B.M. #45 TOP CONCRETE WING 13R RT STA 330+97 ELEV 386.72
 BM #46 SPIKE IN ROOT 18" ELM 60R RT STA. 0+59 JERICHO CENTER ROAD ELEV 403.37

SERIES N.R.H. NO 98D
 SHEET 20 OF 62
 SERIES 1933-20 98 F
 SHEET 4 OF 63