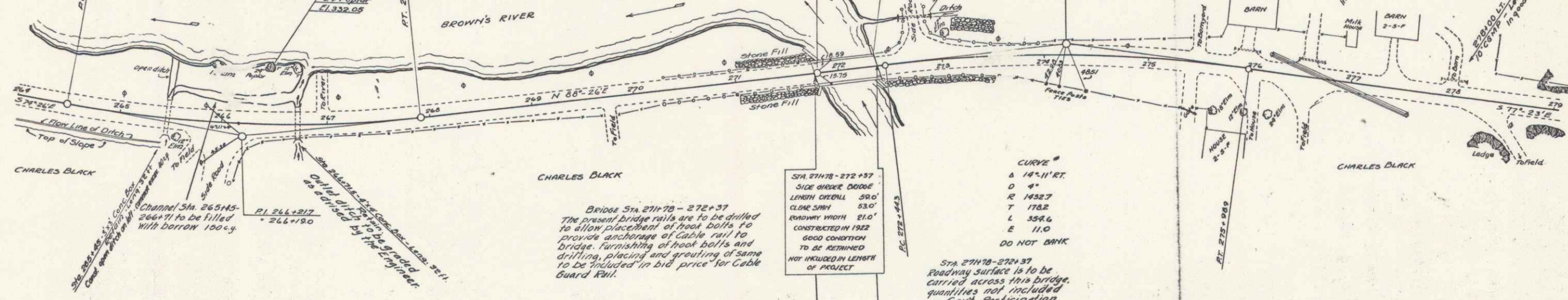


CURVE
 Δ 17° 00' L.T.
 D 5"
 R 1146.3
 T 172.7
 L 342.7
 E 129

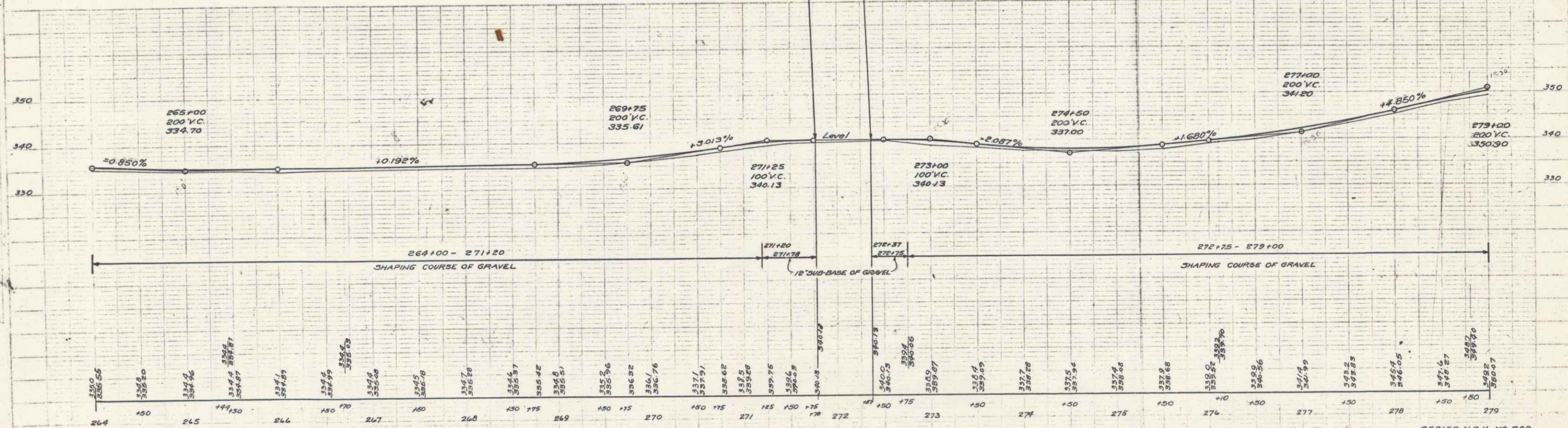


Bridge Sta. 271+70 - 272+37
 The present bridge rails are to be drilled to allow placement of hook bolts to provide anchorage of cable rail to bridge. Furnishing of hook bolts and drilling, placing and grouting of same to be included in bid price for Cable Guard Rail.

Sta. 271+70 - 272+37
 SIDE GRADER BORNE
 LENGTH GENERAL 59.0'
 CLEAR SWAY 53.0'
 ROADWAY WIDTH 21.0'
 CONSTRUCTED IN 1922
 GOOD CONDITION
 TO BE RETAINED
 NOT INCLUDED IN LENGTH OF PROJECT

CURVE
 Δ 16° 11' RT.
 D 4"
 R 1432.7
 T 178.2
 L 354.6
 E 11.0
 DO NOT BANK

Sta. 271+70 - 272+37
 Roadway surface is to be carried across this bridge, quantities not included in Govt. Participation



BM #36 SPIKE IN ROOT 28' POPLAR 30ft LEFT STA. 264+39 ELEV. 332.05
 BM #37 TOP OF CONCRETE BRIDGE RAIL 10.5 ft LT. STA. 272+32 ELEV. 344.31