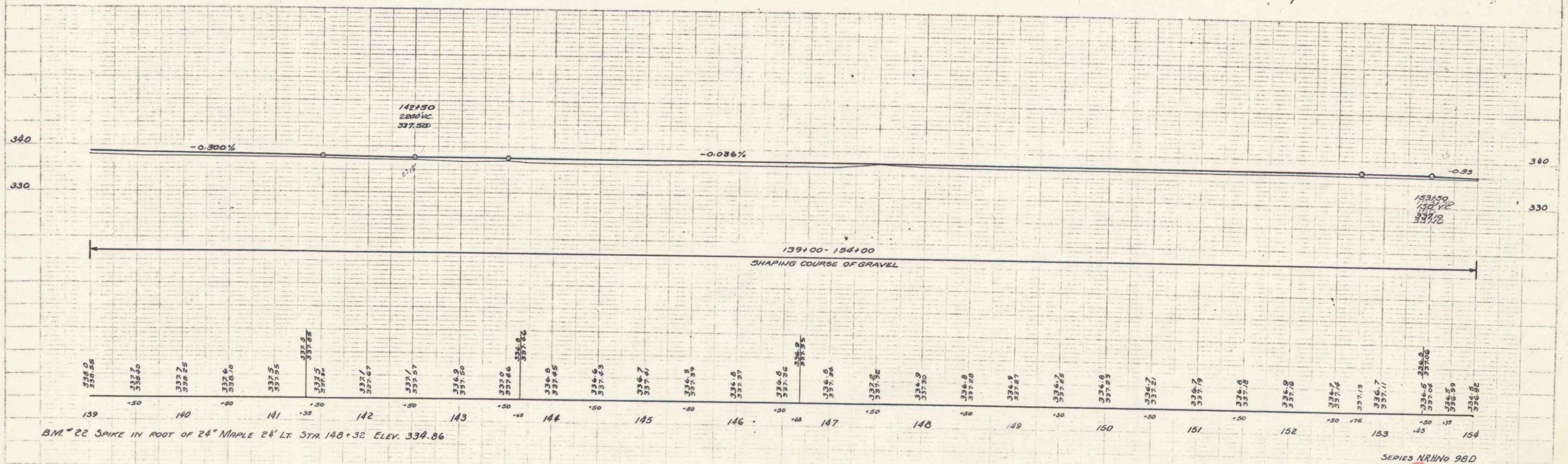
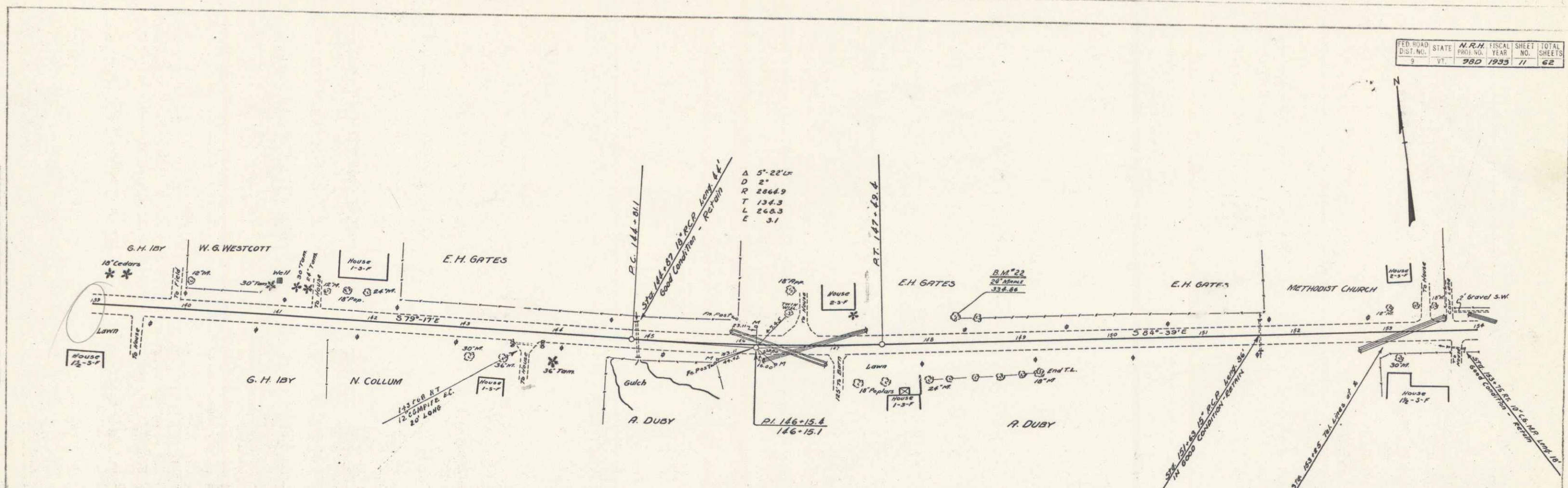


S.E. PUTNAM  
 A.C. PLANNERS  
 305 S.  
 WASHINGTON ST.  
 BURLINGTON, VT.  
 RETURNED - BURTON 11/13/33



B.M. 22 SPIKE IN ROOT OF 24" MAPLE 24' LT. STR. 148+32. ELEV. 334.86