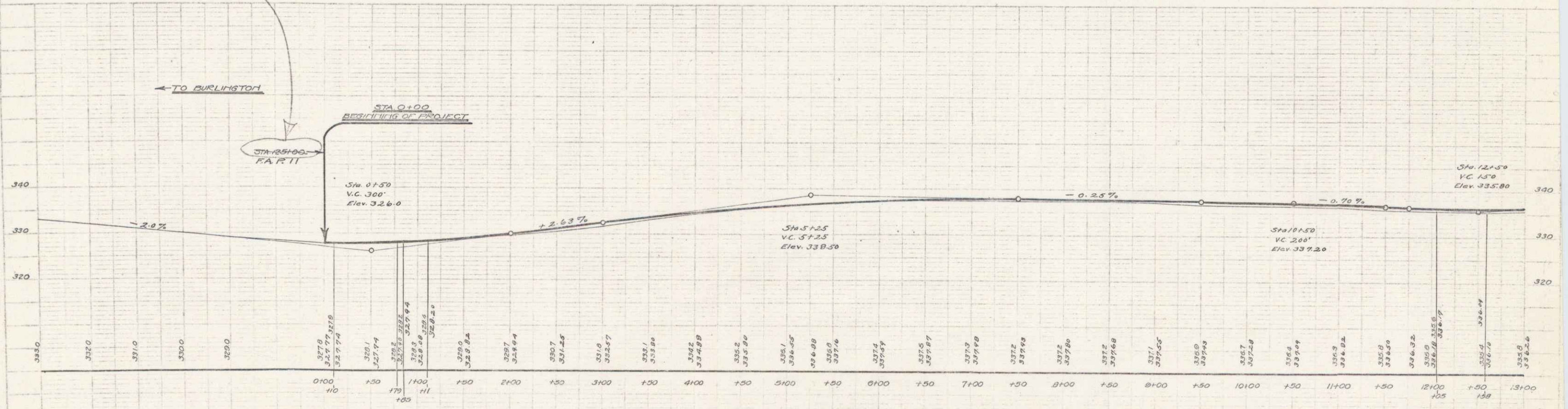
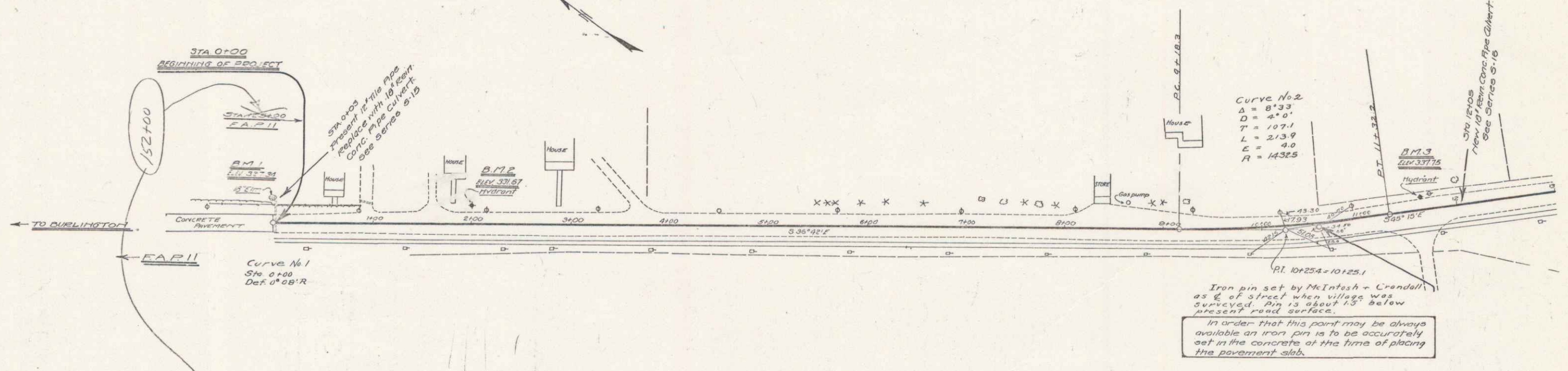


Weed Guard Rail Required
 Left
 Sta 0+00 - 0+80 Length 80 lin. Ft.
 " 11+03 - 12+41 " 138 "
TOTAL FOR SHEET - 220 lin. Ft.

New Culverts Required
 Sta 0+03 18" Rein. Con. Pipe - Length 40' with Drop Inlet @ rate
 Concrete Class #1 (1-2-4) 1.0 cu yd.
 Concrete " #3 (1-2 1/2-3) 2.0 "
 Reinforcing Steel 46 lbs.
 Sta 12+05 18" Rein. Con. Pipe - Length 32' with Drop Inlet @ rate
 Concrete Class #1 (1-2-4) 0.8 cu yd.
 Concrete " #3 (1-2 1/2-3) 1.4 "
 Reinforcing Steel 46 lbs.



ST. 1 - 13 1/2' W. OF LEFT OF STA 0+00 TO 327.34
 S. 14.2 - 13 1/2' W. OF LEFT OF STA 0+00 TO 351.67
 S. 14.3 - 13 1/2' W. OF LEFT OF STA 11+00 TO 337.75