

FED. ROAD DIST. NO.	STATE	W.P.M.H. PROJ. NO.	FISCAL YEAR	SHEET NO.	TOTAL SHEETS
9	Vt.	98A	1936	1	12

INDEX OF SHEETS

SHEET NO. 1	TITLE PAGE
" 2	TYPICAL CROSS-SECTION OF IMPROVEMENT - ONE COURSE CEMENT CONC. SIDEWALK - ITEM 80
" 3-4	PLAN & PROFILE SHEETS
" 5	STANDARD STRUCTURE SHEET 328; PIPE CULVERTS
" 6	" " " 331; ITEM 85
" 7	" " " 340; BARRICADES, SIGNS & LIGHTS
" 8-12	CROSS-SECTION SHEETS

Standard Structure Sheet 328 approved by the Chief Engineer on July 11, 1933.

Standard Structure Sheet 331 approved by the Chief Engineer on July 25, 1934.

(To Be Returned to R.O.M. Division)
 of VT
 PERMIT
 RIGHT-OF-WAY DIVISION

STATE OF VERMONT
 STATE HIGHWAY DEPARTMENT

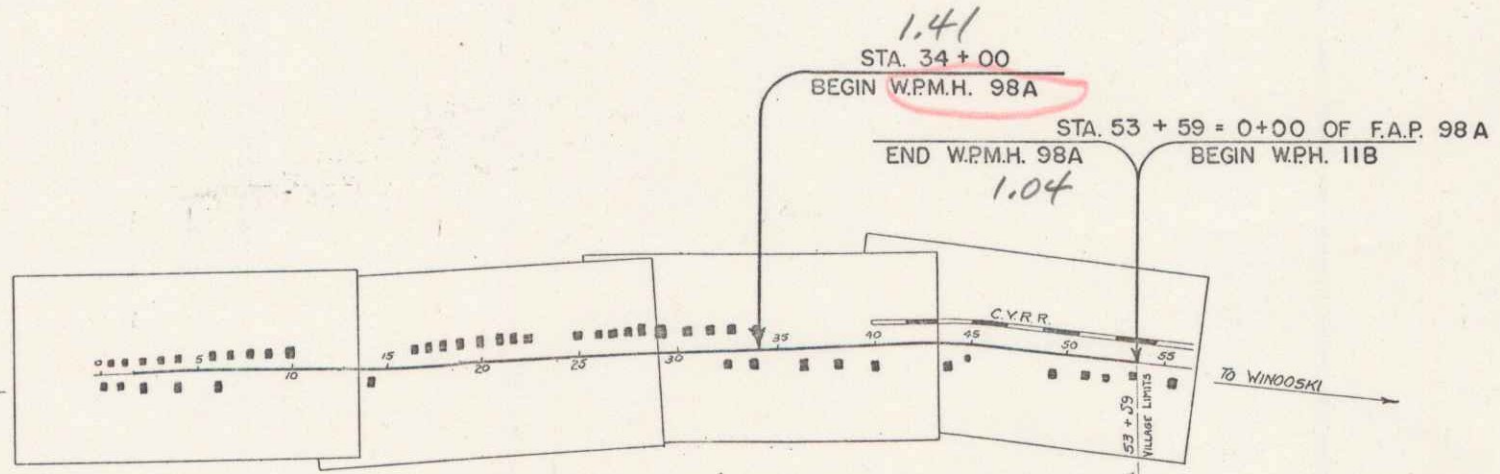
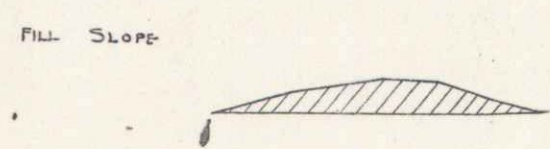
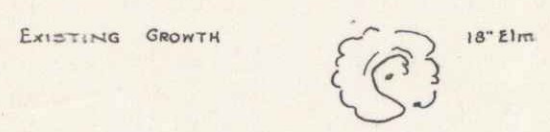
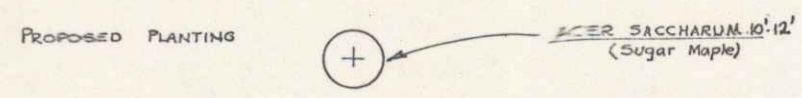
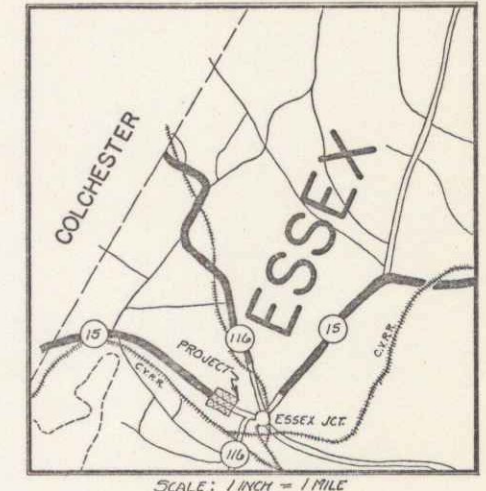
PLAN AND PROFILE OF PROPOSED
 STATE HIGHWAY
 U. S. WORKS PROGRAM MUNICIPAL HIGHWAY PROJECT (W.P.M.H. 98A)

VILLAGE OF ESSEX JUNCTION

ESSEX JUNCTION - WINOOSKI ROAD

BEGINNING AT THE END OF THE PRESENT GRAVEL SIDEWALK ON THE LEFT, AND EXTENDING WESTERLY 0.371 MILES, TO THE VILLAGE LIMITS.

LENGTH OF PROJECT 1959.0 FT. = 0.371 MILES



CONVENTIONAL SIGNS

COUNTY LINE	GROUND ELEVATION
TOWN LINE	GRADE ELEVATION
FENCE LINE	
STONE WALL	
UNFENCED PROPERTY	
GUARD RAIL	
TRAVELED WAY	
RAILROAD	
RETAINING WALL	

CURVE DATA

DEFLECTION ANGLE	Δ
DEGREE OF CURVE	D
RADIUS OF CURVE	R
TANGENT DISTANCE	T
LENGTH OF CURVE	L
EXTERNAL DISTANCE	E
POINT OF INTERSECTION	P. I.
POINT OF CURVE	P. C.
POINT OF TANGENT	P. T.
POINT ON TANGENT	P. O. T.

SCALES

TITLE	1" = 500'
TYPICAL	1" = 2'
PLAN	1" = 50'
PROFILE	1" = 10'
CROSS-SECTIONS	1" = 5'

RECORD PLANS

NOTE: ANY FURTHER INFORMATION CONCERNING FINAL QUANTITIES, AMOUNTS OR OTHER DETAILS RELATIVE TO THIS PROJECT MAY BE FOUND IN EITHER THE FIELD BOOKS OR THE ESTIMATE FILE.

APPROVED: APRIL 10, 1936
 H. B. [Signature]
 COMMISSIONER OF HIGHWAYS

CORRECT: APRIL 10, 1936
 A. J. [Signature]
 ROAD ENGINEER

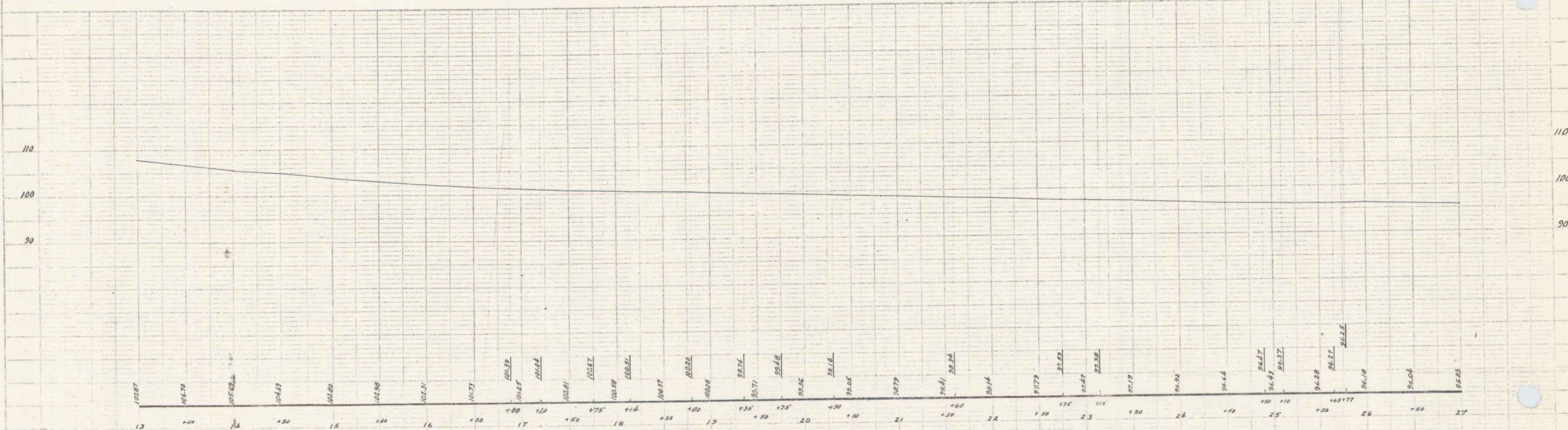
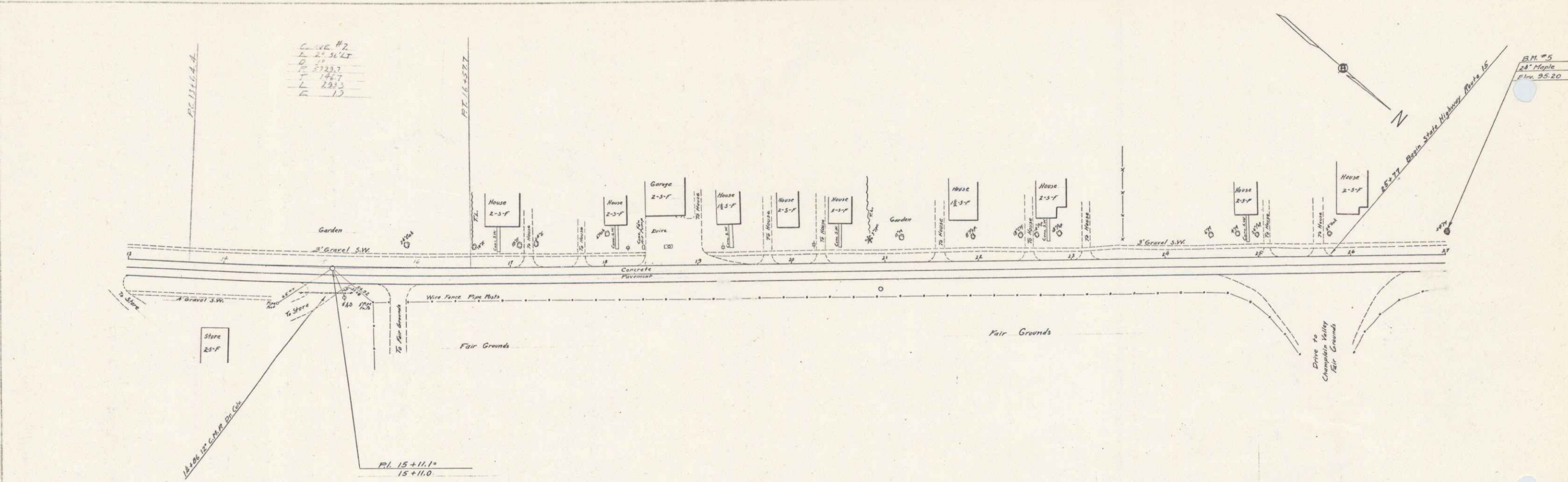
SERIES W.P.M.H. NO. 98A FILED
 SHEET 1 OF 12

DIST. # 5 PLANS

PLAN
 1/4" = 1'-0"
 1/8" = 1'-0"
 1/16" = 1'-0"
 1/32" = 1'-0"
 1/64" = 1'-0"
 1/128" = 1'-0"
 1/256" = 1'-0"
 1/512" = 1'-0"
 1/1024" = 1'-0"
 1/2048" = 1'-0"
 1/4096" = 1'-0"
 1/8192" = 1'-0"
 1/16384" = 1'-0"
 1/32768" = 1'-0"
 1/65536" = 1'-0"
 1/131072" = 1'-0"
 1/262144" = 1'-0"
 1/524288" = 1'-0"
 1/1048576" = 1'-0"
 1/2097152" = 1'-0"
 1/4194304" = 1'-0"
 1/8388608" = 1'-0"
 1/16777216" = 1'-0"
 1/33554432" = 1'-0"
 1/67108864" = 1'-0"
 1/134217728" = 1'-0"
 1/268435456" = 1'-0"
 1/536870912" = 1'-0"
 1/1073741824" = 1'-0"
 1/2147483648" = 1'-0"
 1/4294967296" = 1'-0"
 1/8589934592" = 1'-0"
 1/17179869184" = 1'-0"
 1/34359738368" = 1'-0"
 1/68719476736" = 1'-0"
 1/137438953472" = 1'-0"
 1/274877906944" = 1'-0"
 1/549755813888" = 1'-0"
 1/1099511627776" = 1'-0"
 1/2199023255552" = 1'-0"
 1/4398046511104" = 1'-0"
 1/8796093022208" = 1'-0"
 1/17592186044416" = 1'-0"
 1/35184372088832" = 1'-0"
 1/70368744177664" = 1'-0"
 1/140737488355328" = 1'-0"
 1/281474976710656" = 1'-0"
 1/562949953421312" = 1'-0"
 1/1125899906842624" = 1'-0"
 1/2251799813685248" = 1'-0"
 1/4503599627370496" = 1'-0"
 1/9007199254740992" = 1'-0"
 1/18014398509481984" = 1'-0"
 1/36028797018963968" = 1'-0"
 1/72057594037927936" = 1'-0"
 1/144115188075855872" = 1'-0"
 1/288230376151711744" = 1'-0"
 1/576460752303423488" = 1'-0"
 1/1152921504606846976" = 1'-0"
 1/2305843009213693952" = 1'-0"
 1/4611686018427387904" = 1'-0"
 1/9223372036854775808" = 1'-0"
 1/18446744073709551616" = 1'-0"
 1/36893488147419103232" = 1'-0"
 1/73786976294838206464" = 1'-0"
 1/147573952589676412928" = 1'-0"
 1/295147905179352825856" = 1'-0"
 1/590295810358705651712" = 1'-0"
 1/1180591620717411303424" = 1'-0"
 1/2361183241434822606848" = 1'-0"
 1/4722366482869645213696" = 1'-0"
 1/9444732965739290427392" = 1'-0"
 1/18889465931478580854784" = 1'-0"
 1/37778931862957161709568" = 1'-0"
 1/75557863725914323419136" = 1'-0"
 1/151115727451828646838272" = 1'-0"
 1/302231454903657293676544" = 1'-0"
 1/604462909807314587353088" = 1'-0"
 1/1208925819614629174706176" = 1'-0"
 1/2417851639229258349412352" = 1'-0"
 1/4835703278458516698824704" = 1'-0"
 1/9671406556917033397649408" = 1'-0"
 1/19342813113834066795298816" = 1'-0"
 1/38685626227668133590597632" = 1'-0"
 1/77371252455336267181195264" = 1'-0"
 1/154742504910672534362390528" = 1'-0"
 1/309485009821345068724781056" = 1'-0"
 1/618970019642690137449562112" = 1'-0"
 1/1237940039285380274899244224" = 1'-0"
 1/2475880078570760549798488448" = 1'-0"
 1/4951760157141521099596976896" = 1'-0"
 1/9903520314283042199193953792" = 1'-0"
 1/19807040628566084398387907584" = 1'-0"
 1/39614081257132168796775815168" = 1'-0"
 1/79228162514264337593551630336" = 1'-0"
 1/158456325028528675187103260672" = 1'-0"
 1/316912650057057350374206521344" = 1'-0"
 1/633825300114114700748413042688" = 1'-0"
 1/1267650600228229401496826085376" = 1'-0"
 1/2535301200456458802993652170752" = 1'-0"
 1/5070602400912917605987304341504" = 1'-0"
 1/10141204801825835211974608683008" = 1'-0"
 1/20282409603651670423949217366016" = 1'-0"
 1/40564819207303340847898434732032" = 1'-0"
 1/81129638414606681695796869464064" = 1'-0"
 1/162259276832213363915593739328128" = 1'-0"
 1/324518553664426727831187478656256" = 1'-0"
 1/649037107328853455662374957312512" = 1'-0"
 1/129807421457706711132474991465024" = 1'-0"
 1/259614842915413422264949828930048" = 1'-0"
 1/51922968583082684452989965786016" = 1'-0"
 1/103845937166165368905979931572032" = 1'-0"
 1/207691874332330737811959873144064" = 1'-0"
 1/415383748664661475623919746288128" = 1'-0"
 1/830767497329322951247839492576256" = 1'-0"
 1/166153499465864590249567896552512" = 1'-0"
 1/332306998931729180499135793105024" = 1'-0"
 1/664613997863458360998271586210048" = 1'-0"
 1/132922799572691672199654317242096" = 1'-0"
 1/265845599145383344399308634484192" = 1'-0"
 1/531691198290766688798617268968384" = 1'-0"
 1/1063382396581533377597234537936768" = 1'-0"
 1/2126764793163066755194469075873536" = 1'-0"
 1/4253529586326133510388938151747072" = 1'-0"
 1/8507059172652267020777876303494144" = 1'-0"
 1/17014118345304534041555752606988288" = 1'-0"
 1/34028236690609068083111505213976576" = 1'-0"
 1/68056473381218136166223010427953152" = 1'-0"
 1/136112946762436272332446020855906304" = 1'-0"
 1/272225893524872544664892041711812608" = 1'-0"
 1/544451787049745089329784083423625216" = 1'-0"
 1/1088903574099490178659568166847250432" = 1'-0"
 1/2177807148198980357319136333694500864" = 1'-0"
 1/4355614296397960714638372667389001728" = 1'-0"
 1/8711228592795921429276745334778003456" = 1'-0"
 1/17422457185591842884553490669556006912" = 1'-0"
 1/34844914371183685769106981339112013824" = 1'-0"
 1/69689828742367371538213962678224027648" = 1'-0"
 1/139379657484734743076427925356448055296" = 1'-0"
 1/278759314969469486152855850712896110592" = 1'-0"
 1/557518629938938972305711701425792221184" = 1'-0"
 1/1115037259877877944611434028511544442368" = 1'-0"
 1/22300745197557558892228680570228888477" = 1'-0"
 1/44601490395115117784457361140457777554" = 1'-0"
 1/892029807902302355689147222809155511088" = 1'-0"
 1/1784059615804604711378294445618310212176" = 1'-0"
 1/3568119231609209422756588891236620424352" = 1'-0"
 1/7136238463218418845513177782473240488704" = 1'-0"
 1/14272476926436837691026355564946481737408" = 1'-0"
 1/28544953852873675382052711129892963474816" = 1'-0"
 1/57089907705747350764105422259785926949632" = 1'-0"
 1/11417981541149470152821084451957187389824" = 1'-0"
 1/22835963082298940305642168803914374779456" = 1'-0"
 1/45671926164597880611284337607828749599104" = 1'-0"
 1/91343852329195761222568675215657499182016" = 1'-0"
 1/18268770465839152444513735043131499844032" = 1'-0"
 1/36537540931678304889027470086262998888064" = 1'-0"
 1/7307508186335660977805494017252599777712" = 1'-0"
 1/14615016372671321955610988034505199544224" = 1'-0"
 1/29230032745342643911221976069010399088448" = 1'-0"
 1/58460065490685287822443552138020798177984" = 1'-0"
 1/11692013098137057564488710427604159755584" = 1'-0"
 1/23384026196274115128977420855208319511168" = 1'-0"
 1/46768052392548230257954841710416639022336" = 1'-0"
 1/93536104785096460515909683420833278044672" = 1'-0"
 1/187072209570192921031819366841666556089344" = 1'-0"
 1/374144419140385842063638733683333112178688" = 1'-0"
 1/748288838280771684127277467366666224357376" = 1'-0"
 1/1496577676561543368254554934733332487146752" = 1'-0"
 1/299315535312308673650910986946666494289504" = 1'-0"
 1/598631070624617347301821973893332988579008" = 1'-0"
 1/119726214124923469460364394798666597158016" = 1'-0"
 1/239452428249846938920728789597333194316032" = 1'-0"
 1/478904856499693877841457579194666388632064" = 1'-0"
 1/957809712999387755682915158389332777264128" = 1'-0"
 1/191561942599877551136583031677866555452256" = 1'-0"
 1/3831238851997551022731660633557331109044512" = 1'-0"
 1/7662477703995102045463321267114662218088832" = 1'-0"
 1/1532495540799020409092664253423324363617664" = 1'-0"
 1/30649910815980408181853285068466486713328" = 1'-0"
 1/61299821631960816363706560136932933426656" = 1'-0"
 1/122599643263921632727413120273865866853112" = 1'-0"
 1/24519928652784326545482624054773733372224" = 1'-0"
 1/49039857305568653090965248109467466744448" = 1'-0"
 1/98079714611137306181930496218934933488896" = 1'-0"
 1/196159429222274612363860984378698668977984" = 1'-0"
 1/392318858444549224727721968757397337955872" = 1'-0"
 1/784637716889098449455443937514794675911648" = 1'-0"
 1/156927543377819689891088875502958935182336" = 1'-0"
 1/313855086755639379782177751005917870364704" = 1'-0"
 1/627710173511278759564355502011837736729408" = 1'-0"
 1/1255420347022557519128711044023755454478912" = 1'-0"
 1/2510840694045115038257422088047510889177824" = 1'-0"
 1/502168138809023007651484417609502177835568" = 1'-0"
 1/1004336277618046015302968835219003557671136" = 1'-0"
 1/2008672555236092030605937670438007115342272" = 1'-0"
 1/4017345110472184061211875340876014306844448" = 1'-0"
 1/8034690220944368122423750681752028613688896" = 1'-0"
 1/1606938044188873624484750136350405722737792" = 1'-0"
 1/3213876088377747248969500272700811454755584" = 1'-0"
 1/6427752176755494497939000545401630909511104" = 1'-0"
 1/12855504353510988995878001090803261819022208" = 1'-0"
 1/25711008707021977991756002181606523638044416" = 1'-0"
 1/51422017414043955983512004363213047276088832" = 1'-0"
 1/1028440348280879119670240087264260945521776" = 1'-0"
 1/2056880696561758239340480174528521891043552" = 1'-0"
 1/4113761393123516478680960349057043782087104" = 1'-0"
 1/8227522786247032957361920698114087564174208" = 1'-0"
 1/1645504557249406591472384139622812818284416" = 1'-0"
 1/3291009114498813182944768279245625636568832" = 1'-0"
 1/6582018228997626365889536588491251331377664" = 1'-0"
 1/131640364579952527317790731769250226227552" = 1'-0"
 1/263280729159905054635581463538500452455104" = 1'-0"
 1/526561458319810109271162927077000904910208" = 1'-0"
 1/1053122916639620218542325854154001809820416" = 1'-0"
 1/2106245833279240437084651708308003619640832" = 1'-0"
 1/4212491666558480874169303416616007239281664" = 1'-0"
 1/8424983333116961748338606833232014478563328" = 1'-0"
 1/1684996666223392349667721366446402955712656" = 1'-0"
 1/3369993332446784699335442732892805911425312" = 1'-0"
 1/673998666489356939867088546578561182285024" = 1'-0"
 1/134799733297871379773417709115712364550048" = 1'-0"
 1/26959946659574275954683541823142472890016" = 1'-0"
 1/53919893319148551909367083646284957780032" = 1'-0"
 1/107839786638297103818734167292569915560064" = 1'-0"
 1/215679573276594207637468335585139831120128" = 1'-0"
 1/431359146553188415274936671170279662240256" = 1'-0"
 1/862718293106376830549873342340559324480512" = 1'-0"
 1/17254365862127536610997466846811886489601024" = 1'-0"
 1/34508731724255073221994933693623772979202048" = 1'-0"
 1/69017463448510146443989867387247545958404096" = 1'-0"
 1/138034926897020292887979734774495091916808192" = 1'-0"
 1/276069853794040585775959469548990183733616384" = 1'-0"
 1/552139707588081171551918939097981667467226768" = 1'-0"
 1/1104279415176162343103837878195963334934453536" = 1'-0"
 1/2208558830352324686207675756391926669868887072" = 1'-0"
 1/4417117660704649372415351512783853339737774144" = 1'-0"
 1/8834235321409298744830703025567706679475488" = 1'-0"
 1/17668470642818597489661406051135413358950976" = 1'-0"
 1/35336941285637194979322812102270826717901952" = 1'-0"
 1/70673882571274389958645624204541653435803008" = 1'-0"
 1/141347765142548779917329248409083066871606016" = 1'-0"
 1/282695530285097559834658496818166133743212032" = 1'-0"
 1/565391060570195119669316993636332267486424064" = 1'-0"
 1/1130782121140390239338633987272664534972848128" = 1'-0"
 1/2261564242280780478677267974545329069945696256" = 1'-0"
 1/452312848456156095735453594909065813989132512" = 1'-0"
 1/904625696912312191470907189818131639778265024" = 1'-0"
 1/1809251393824624382941814379636263279556530048" = 1'-0"
 1/36185027876492487658836287592725265591130016" = 1'-0"
 1/72370055752984975317672575185450531182260032" = 1'-0"
 1/14474011150596995063534515037090106364452064" = 1'-0"
 1/28948022301193990127069030074180212728904128" = 1'-0"
 1/57896044602387980254138060148360425457808256" = 1'-0"
 1/115792089204775960508276120296720850915615104" = 1'-0"
 1/23158417840955192101655224059344170183122208" = 1'-0"
 1/46316835681910384203310448118688340366244416" = 1'-0"
 1/9263367136382076840662089623737668073248832" = 1'-0"
 1/1852673427276415368132417924747536146649664" = 1'-0"
 1/370534685455283073626483584949507229329328" = 1'-0"
 1/741069370910566147252967169899014458578656" = 1'-0"
 1/1482138741821132294505934397798029117157312" = 1'-0"
 1/2964277483642264589011868795596058234314624" = 1'-0"
 1/592855496728452917802373759119211668682848" = 1'-0"
 1/118571099345690583560474751823623337336768" = 1'-0"
 1/237142198691381167120949503647246674673536" = 1'-0"
 1/474284397382762334241899007294493349347104" = 1'-0"
 1/948568794765524668483798014589986698694208" = 1'-0"
 1/1897137589531049336967596029179973373888416" = 1'-0"
 1/37942751790620986739351920583599466777728" = 1'-0"
 1/75885503581241973478703841167189333555456" = 1'-0"
 1/151771

PLAN
 DATE FROM
 DATE TO
 DRAWN
 CHECKED
 APPROVED
 2 1/4" = 100' 0"
 CONE
 49445

PLAN
 DATE FROM
 DATE TO
 DRAWN
 CHECKED
 APPROVED
 2 1/4" = 100' 0"
 CONE
 49445



B.M. #1 SPOT ON CONC. FDN. AMCO GAS PUMP 15 FT. LT. OF STA. 18+63 ELEV. 100.87
 B.M. #5 SPIKE IN ROOT OF 24" MAPLE 22 FT. LT. OF STA. 27+00 ELEV. 95.20

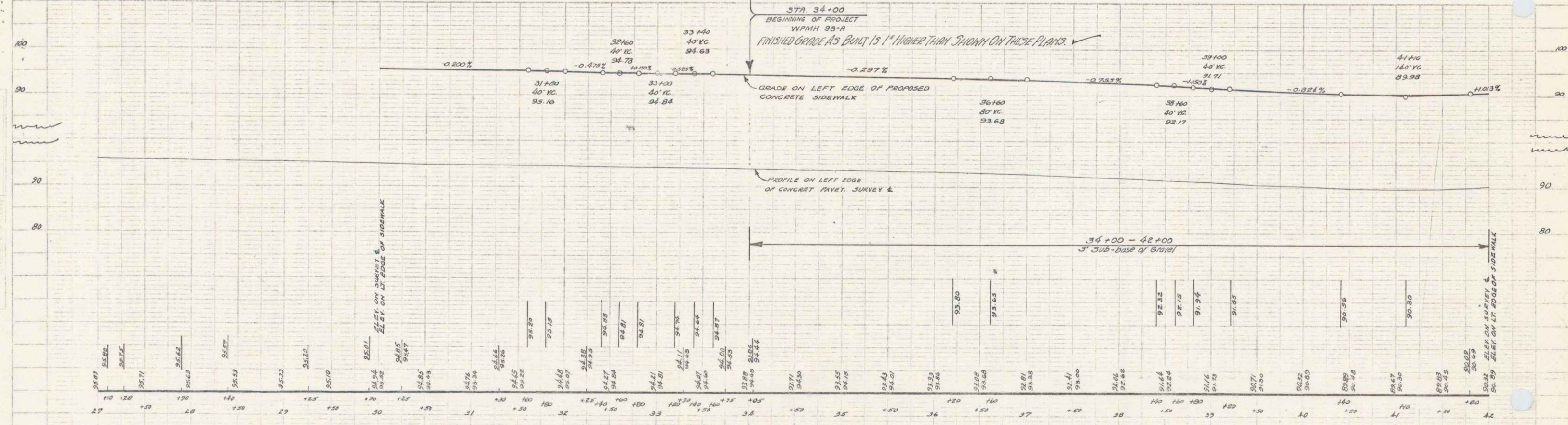
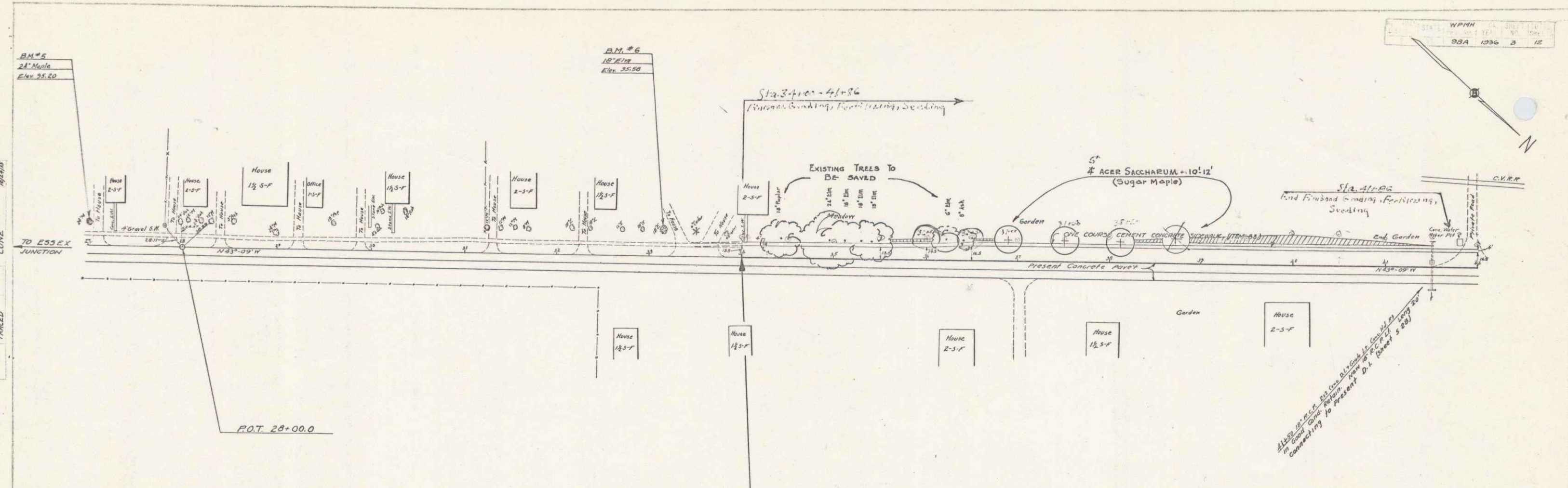
E-5EX WPH 11 P
 4 2

2A 3

STA. WPMH 98-A
 324 1236 3 12

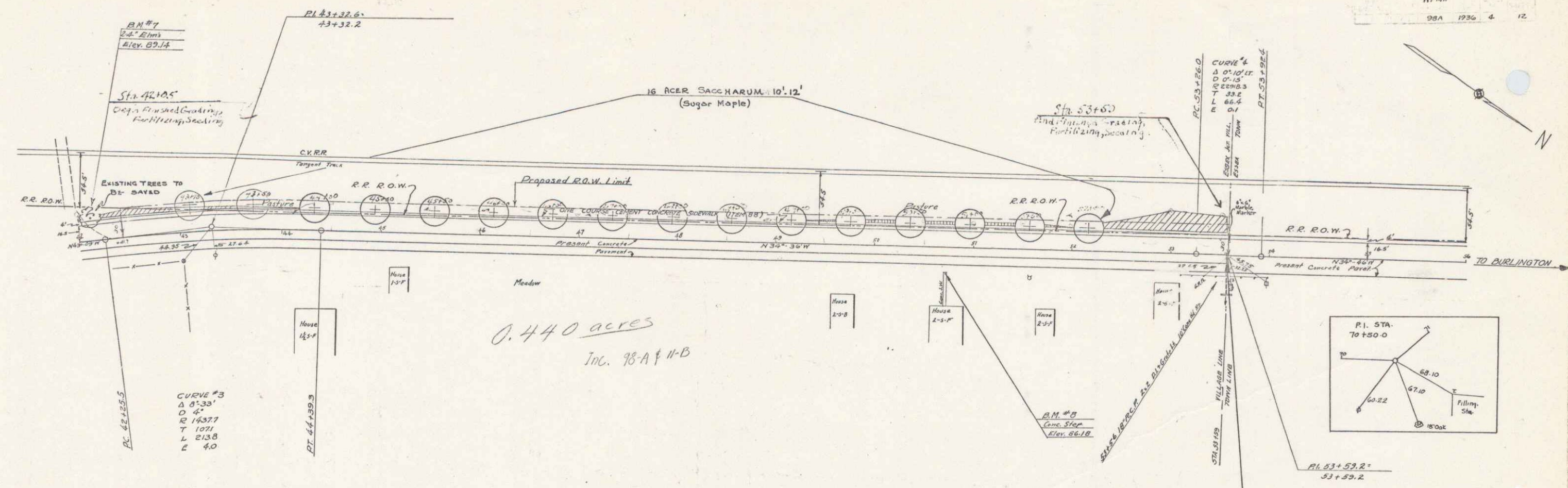
PLAN
 CONE
 THICK

PLAN
 CONE
 THICK

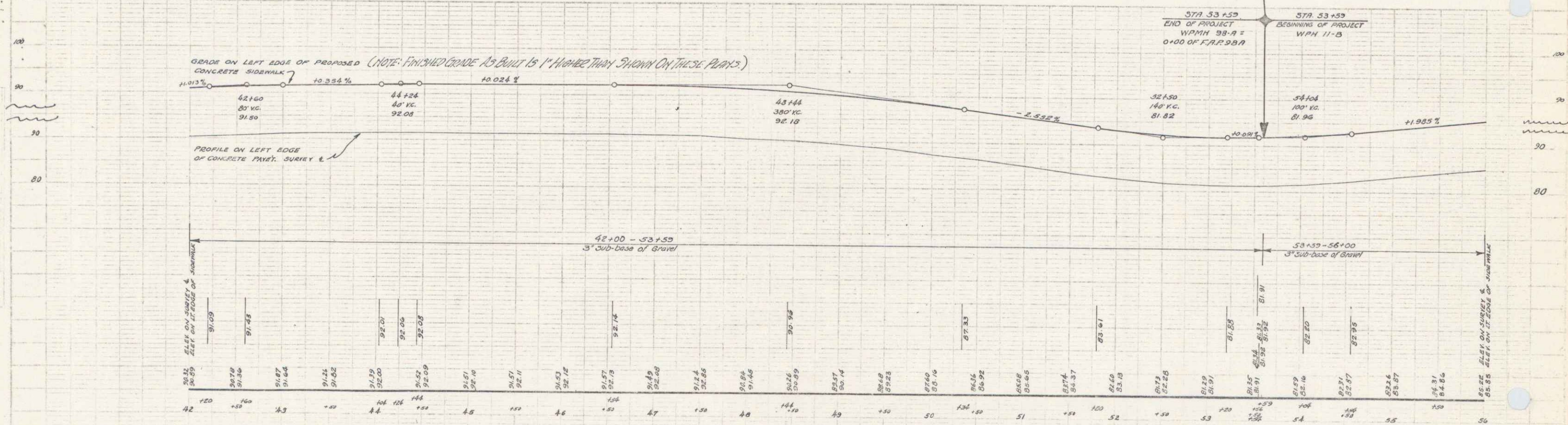
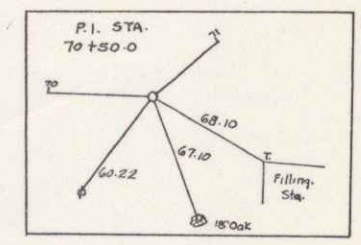


B.M. #5 SPIKE IN ROOT OF 24" MAPLE 22 FT. LT. OF STA. 27+00 ELEV. 95.20
 B.M. #6 SPIKE IN ROOT OF 18" ELN 25 FT. LT. OF STA. 33+14 ELEV. 95.58

SERIES WPMH NO 98-A
 SHEET 3 OF 12



0.440 acres
Inc. 98-A & 11-B



B.M. #7 SPIKE IN ROOT OF THIN 4' ELMS 22 FT. LT. OF STA. 42+12 ELEV. 89.14
B.M. #8 SPOT ON CONC. STEPS 25 FT. RT. OF STA 50+73 ELEV. 86.18

5