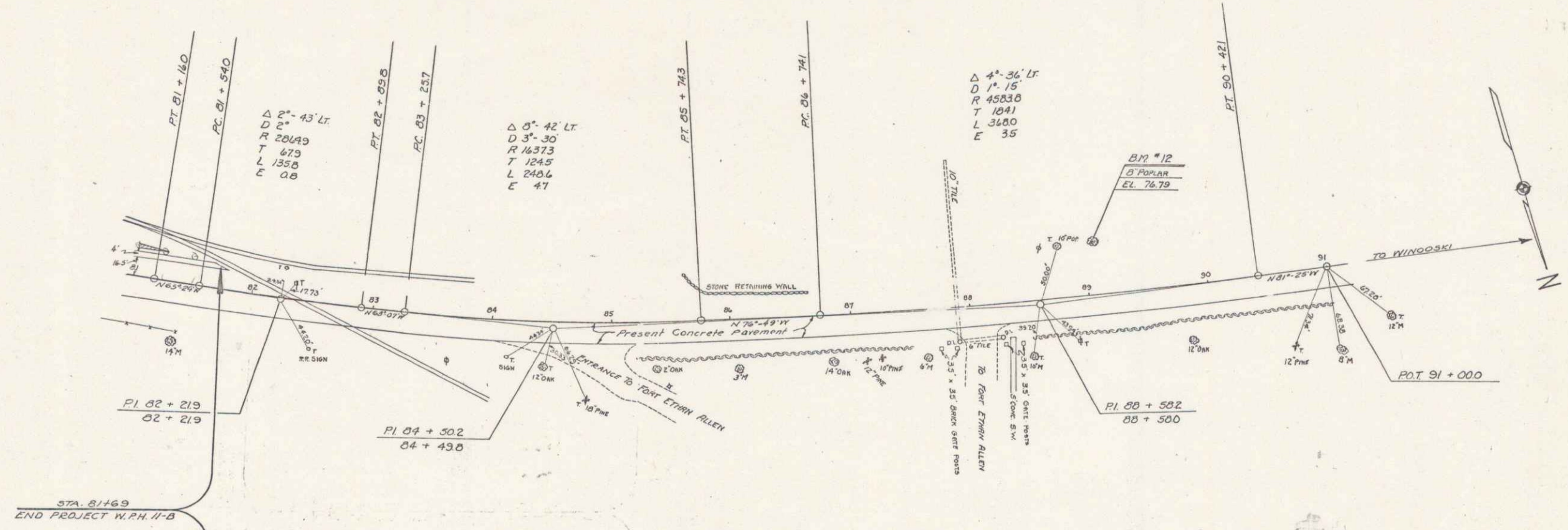


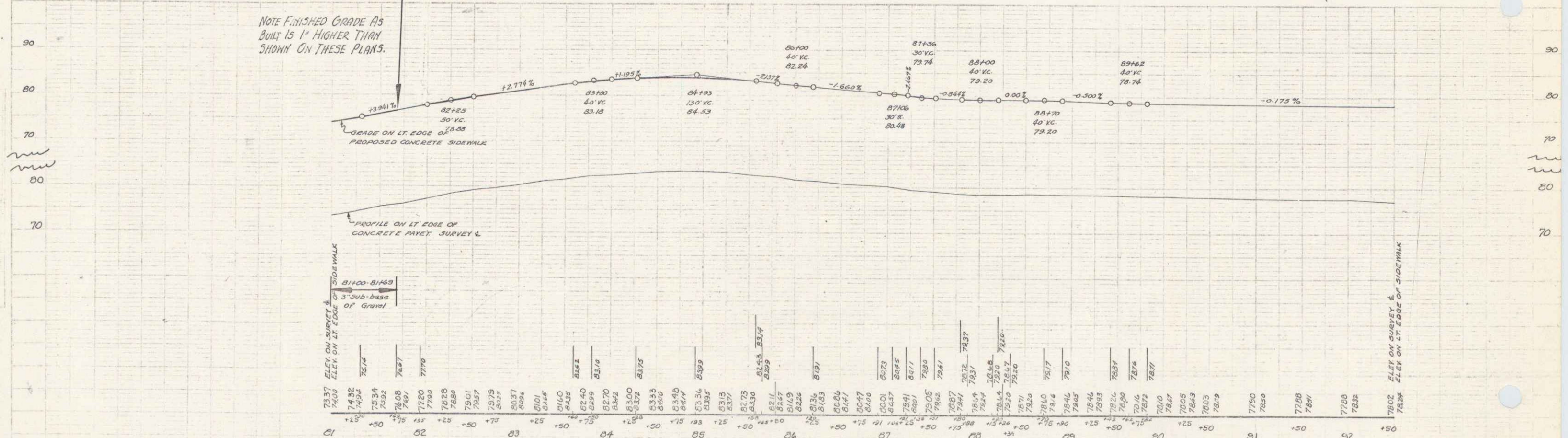
3-14
SHEET
LINTIE

3-16
SHEET
LINTIE



STA. 8169
END PROJECT W.P.H. 4-B

NOTE FINISHED GRADE AS
SHOWN IS 1" HIGHER THAN
SHOWN ON THESE PLANS.



B.M. #12; Spike in root of Poplar Sta. 89+07 El. 76.79

5