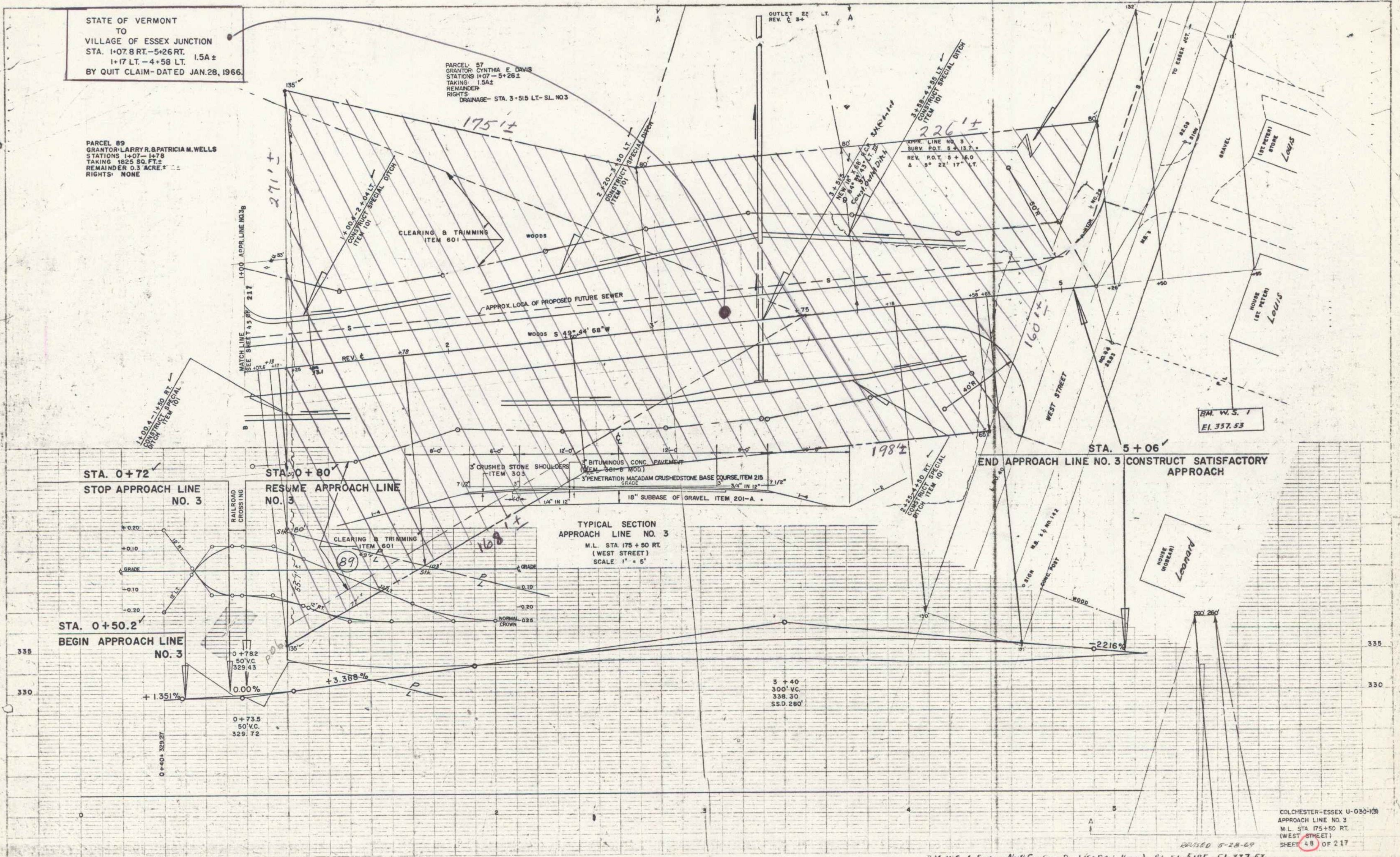


STATE OF VERMONT
TO
VILLAGE OF ESSEX JUNCTION
STA. 1+07.8 RT. - 5+26 RT. 1.5A ±
1+17 LT. - 4+58 LT. 1.5A ±
BY QUIT CLAIM - DATED JAN. 28, 1966.

PARCEL 89
GRANTOR: LARRY R. & PATRICIA M. WELLS
STATIONS 1+07 - 1+78
TAKING 1825 SQ. FT.
REMAINDER 0.3 ACRE ±
RIGHTS: NONE

PARCEL 57
GRANTOR: CYNTHIA E. DAVIS
STATIONS 1+07 - 5+26 ±
TAKING 1.5A ±
REMAINDER
RIGHTS:
DRAINAGE - STA. 3+51.5 LT. - SL. NO. 3

PLANS
DATE: 5-28-69
BY: [Signature]
CHECKED: [Signature]
SCALE: AS SHOWN



STA. 0+72
STOP APPROACH LINE
NO. 3

STA. 0+80
RESUME APPROACH LINE
NO. 3

STA. 0+50.2
BEGIN APPROACH LINE
NO. 3

STA. 5+06
END APPROACH LINE NO. 3 CONSTRUCT SATISFACTORY
APPROACH

TYPICAL SECTION
APPROACH LINE NO. 3
M.L. STA. 175+50 RT.
(WEST STREET)
SCALE: 1" = 5'

COLCHESTER-ESSEX U-030-109
APPROACH LINE NO. 3
M.L. STA. 175+50 RT.
(WEST STREET)
SHEET 48 OF 217

R.M. W.S. 1 Spot on North Cor. Conc. Porch (St. Peter's House) Rt. Sta. 5+185 E.I. 337.53