

GRANITE SLOPE EDGING ITEM 556-A RIGHT		
STATION	STATION	NOTES
0+88	2+20	

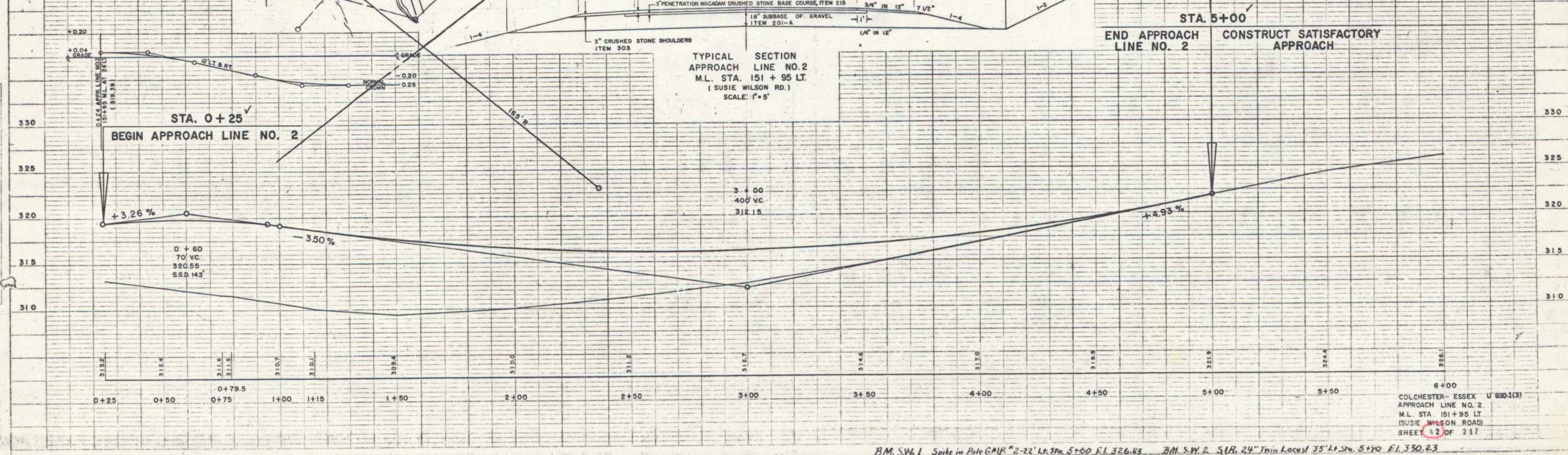
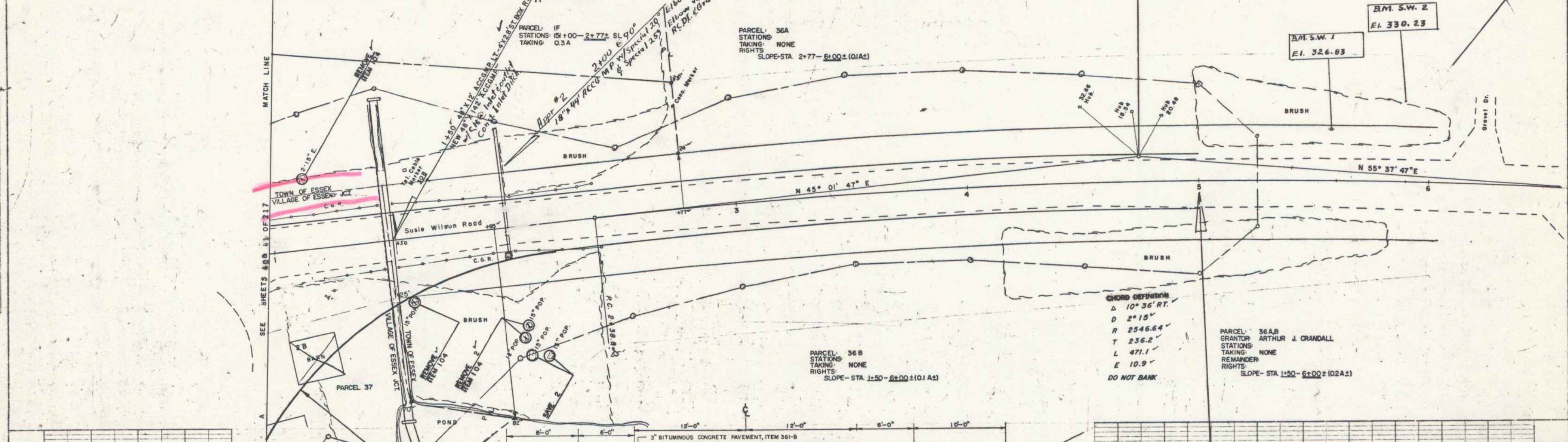
PROPERTY LINE FENCE
ITEM 563-B
LEFT
STA. 151400 M.L. - 2+77 SL.

THREE CABLE GUARD RAIL WITH STEEL POSTS ITEM 543		
STATION	STATION	POS.
0+88.94	2+88.51	RT
1+01	2+82.19	LT

REMOVAL & DISPOSAL OF PRESENT GUARD RAIL ITEM 550		
STATION	STATION	POS.
0+96	2+20	RT
1+00	2+38	LT

DEMOLITION & REMOVAL OF BUILDING ITEM 586 RIGHT		
BLDG. NO.	STATION	POS.
3	1+15	RT

TOPSOIL & SEEDING ITEMS 621 & 611	
STATION	STATION
0+98	2+20



PLAN
NO. 12
DATE 7-58
WEBSTER-MARTIN INC.
NOTE: CHECK ALL DIMENSIONS AND ELEVATIONS
RT OR BY CHECKED.

PROFILE
NO. 12
DATE 7-58
WEBSTER-MARTIN INC.
NOTE: CHECK ALL DIMENSIONS AND ELEVATIONS
RT OR BY CHECKED.

6+00
COLCHESTER-ESSEX U' 030-1(3)
APPROACH LINE NO. 2
M.L. STA. 151+95 LT.
(SUSIE WILSON ROAD)
SHEET 12 OF 217

B.M. S.W. 1 Spike in Pole G.P.R. #2-22' Lx. 3 1/2" 5+00 EL. 326.83 B.M. S.W. 2 SUR. 24" Trm Locust 35' Lx. 3 1/2" 5+50 EL. 330.23