

TOPSOIL & SEEDING ITEMS 621 & 611			
STATION	STATION	NOTES	POS.
146+00	152+00		
0+00	0+98	APPR. NO. 2 LT	

GRANITE CURB ITEM 556-B			
STATION	STATION	POS.	NOTES
146+00	147+52	LT	
146+00	149+33	RT	
148+34	151+36	LT	
150+38	152+00	RT	
0+12	0+70	LT	APPR. NO. 2

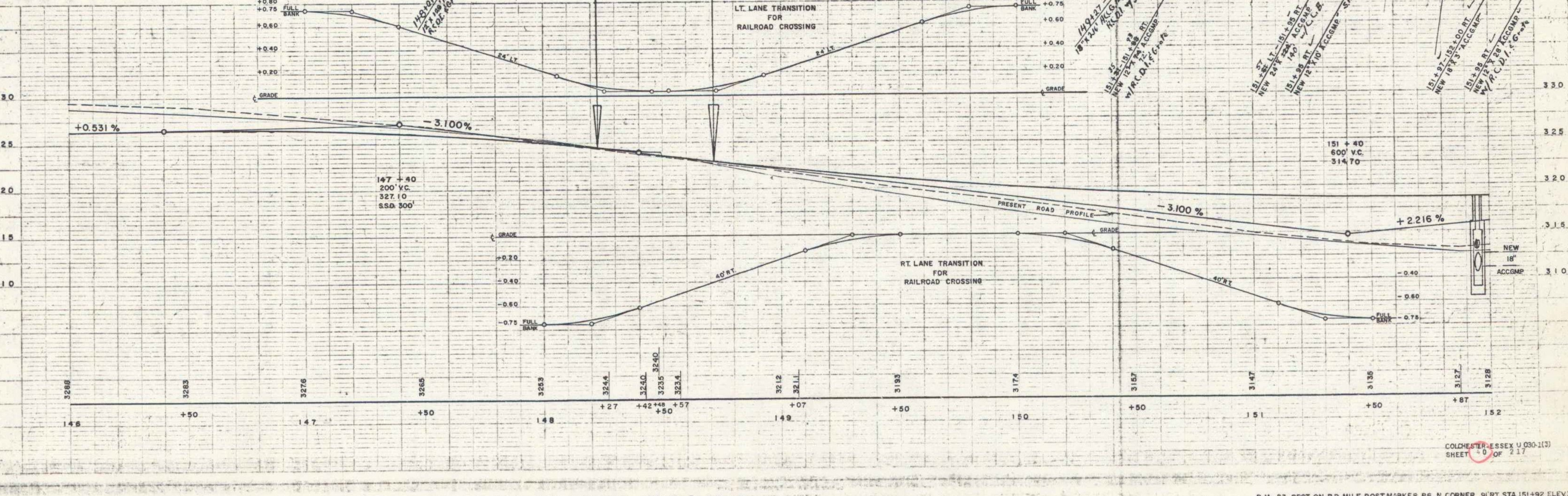
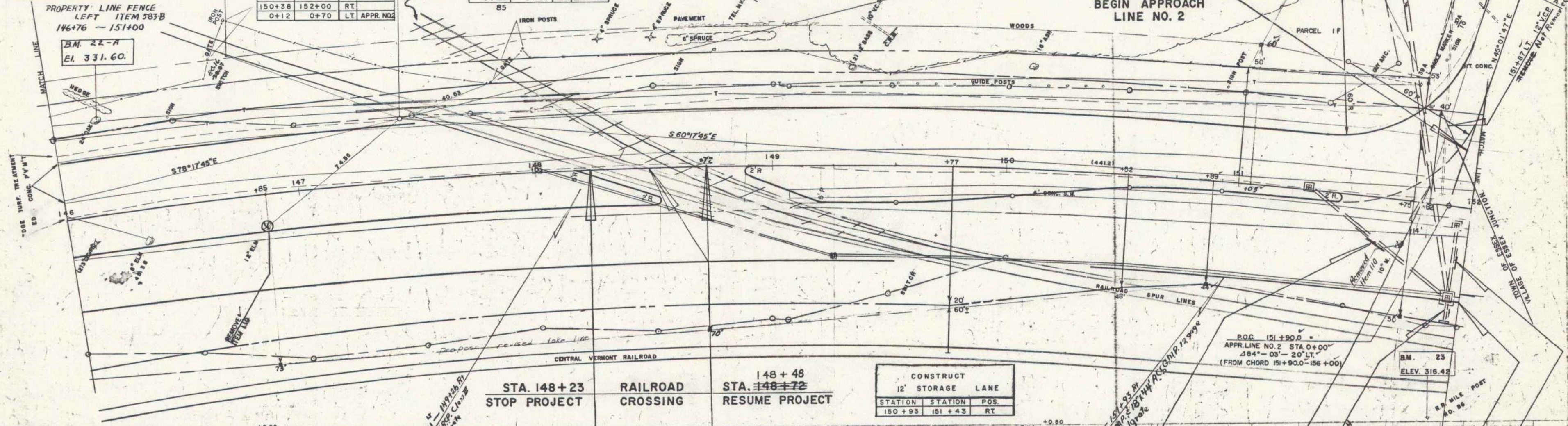
THREE CABLE GUARD RAIL WITH STEEL POSTS ITEM 543			
STATION	STATION	POS.	NOTES
146+00	149+33	RT	
149+28	151+36	LT	150+26
0+22	1+01	LT	APPR. NO. 2

REMOVAL & DISPOSAL OF PRESENT GUARD RAIL ITEM 550 APPROACH LINE NO. 2			
STATION	STATION	POS.	NOTES
0+85	1+00	RT	

GRANITE SLOPE EDGING ITEM 556-A MEDIAN (C & RT)			
STATION	STATION	POS.	NOTES
146+00	148+53	RT	
148+38	151+45	LT	

CONSTRUCT MEDIAN RIGHT			
STATION	STATION	POS.	NOTES
146+00	148+53	RT	
148+88	151+45	LT	

STONE FILL FOR SLOPE PROTECTION ITEM 522 RIGHT			
STATION	STATION	POS.	NOTES
146+00	149+50	RT	



WESTER-MARTIN, INC. 6-27
 WESTER-MARTIN, INC. 7-27
 DATE 10/1/57
 NO. 100

WESTER-MARTIN, INC. 6-27
 WESTER-MARTIN, INC. 7-27
 DATE 10/1/57
 NO. 100

B.M. 22 SPOT ON W. BOLT OF RR. SWITCH 59' LT. STA. 146+75.5 ELEV. 328.12 B.M. 22-A S.I.T. 24" Oak 40' Lt. Sta. 146+15 ELEV. 331.60 B.M. 23 SPOT ON RR. MILE POST MARKER B6 N. CORNER 91' RT. STA. 151+92 ELEV. 316.42

COLCHESTER, ESSEX CO. 030-1(3)
 SHEET 0 OF 217