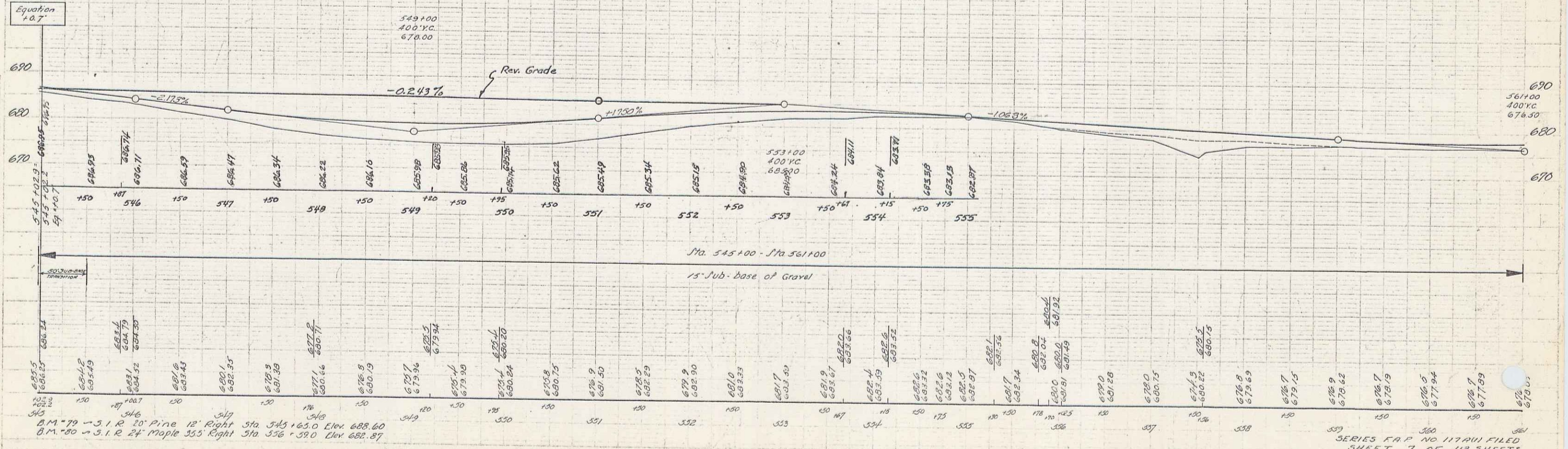
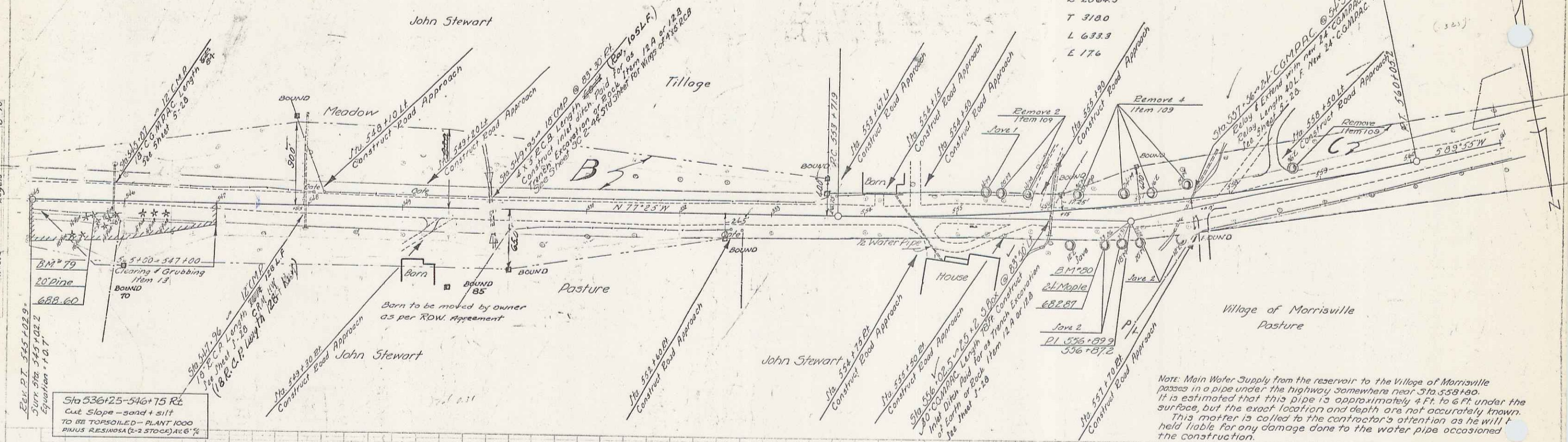


PARCEL INSTRUMENT DATE GRANTOR GRANTEE RECORDED REMARKS  
 B.C. W.D.E. 27-41 JOHN STEWART ST. OF V. MORRISTOWN  
 28 340'3 213.41

Δ 12'40" LF  
 D 2'  
 E 2064.3  
 T 3100  
 L 633.3  
 L 176

STATE OF NEW JERSEY  
 COUNTY OF MORRIS  
 FILE NO. 117411  
 SHEET NO. 7 OF 112



Note: Main Water Supply from the reservoir to the Village of Morrisville passes in a pipe under the highway somewhere near Sta. 558+00. It is estimated that this pipe is approximately 4 ft. to 6 ft. under the surface, but the exact location and depth are not accurately known. This matter is called to the contractor's attention as he will be held liable for any damage done to the water pipe occasioned by the construction.

B.M. 79 - 3.1 R 20' Pine 12' Right Sta. 545+65.0 Elev. 688.60  
 B.M. 80 - 3.1 R 24' Maple 355' Right Sta. 536+59.0 Elev. 682.87

SERIES F.A.P. NO. 117411 FILED  
 SHEET 7 OF 112 SHEETS