

INDEX OF SHEETS	
SHEET NO. 1	TITLE PAGE
2	TYPICAL CROSS-SECTION OF IMPROVEMENT (2 1/2" BITUMINOUS CONCRETE PAVEMENT ITEM 301-01)
3	STANDARD CULVERT DETAILS 58 21-56
4	QUANTITY SHEET (ITEMS)
5-6	QUANTITY SHEETS (DRAINAGE)
7-10	EARTHWORK SHEETS
11-21	PLAN & PROFILE SHEETS
22	DETAILS OF REINFORCED CONCRETE BOX CULVERT STA. 52+18.5
23	DETAILS OF REINFORCED CONCRETE BOX CULVERT EXTENSION STA. 72+81
24	DETAILS OF 180° CORR. GALV. METAL PLATE PIPE STA. 139+20
25	REINFORCING STEEL DETAILS
26	ROADWAY STANDARD SHEET RS 56-1 (BANKING TABLES)
27	ROADWAY STANDARD SHEET RS 56-2 (REINFORCED CONCRETE DROP INLET)
28	ROADWAY STANDARD SHEET RS 56-3 (BOUNDARY MARKERS)
29	ROADWAY STANDARD SHEET RS 56-4 (PERF. ASPH. CTD. CORR. GALV. METAL UNDERDRAIN)
30	ROADWAY STANDARD SHEET RS 56-6 (TYPICAL SLOPE GRADINGS)
31	ROADWAY STANDARD SHEET RS 56-9 (DRILLING AND BLASTING OF SOLID ROCK SUB-BASE)
32	ROADWAY STANDARD SHEET RS 56-11 (THREE CABLE GUARD RAIL WITH STEEL POSTS)
33	ROADWAY STANDARD SHEET RS 56-12 (BARRICADES, SIGNS AND LIGHTS)
33-A	ROADWAY STANDARD SHEET RS 56-14 (PRECAST R.C.P. DROP INLET)
34-129	CROSS SECTIONS SHEETS
130-133	CHANNEL SECTION SHEETS

PROJECT NAME & NUMBER	TYPE	PAVEMENT AREA
HYDE PARK F 133(4)	2 1/2" BIT. CONC. PAVMT.	19,470 sy
HYDE PARK-MORRISTOWN F 39(2)		27,534 sy

RECORD PLANS		
MATERIALS		
REINFORCED CONCRETE PIPE	VERMONT CONC. PIPE CO.	WINDSOR, VT.
A.C.C.G. METAL PIPE	NEW ENGLAND METAL PIPE CO.	
CEMENT	LOVE STAR PORTLAND CEMENT CO.	HUDSON, N.Y.
AGGREGATES	MADEAU PLANT	JOHNSON, VT.
REINFORCING STEEL	VT. STRUCTURAL STEEL CO.	BURLINGTON, VT.
BITUMINOUS MATERIALS	BARRETT CO.	MALDEN, MASS.
	ESSO STANDARD OIL CO.	EVERETT, MASS.
BIT. CONC. PAVEMENT	L.M.P.K.E. & SON INC.	LACONIA, N.H.
GRAVEL SUB-BASE	CLAPPER, REED PITS	HYDE PARK, VERMONT
STEEL-GUARD RAIL	ST. RAYMOND CO. INC.	WINDSOR, VT.
CONTRACTOR	FLOW & COTE INC.	CONTRACT DATED FEB. 11, 1958.
RES. ENGINEER	EDW. C. GLYSSON	CONSTRUCTION STARTED APR. 8, 1958.
INSPECTOR	FRED REED	CONTRACT COMPLETED SEPT. 11, 1958.
RECORD PLANS	E. C. GLYSSON	CONTRACT ACCEPTED SEPT. 11, 1958.

STATE OF VERMONT
DEPARTMENT OF HIGHWAYS

Proposed Improvement

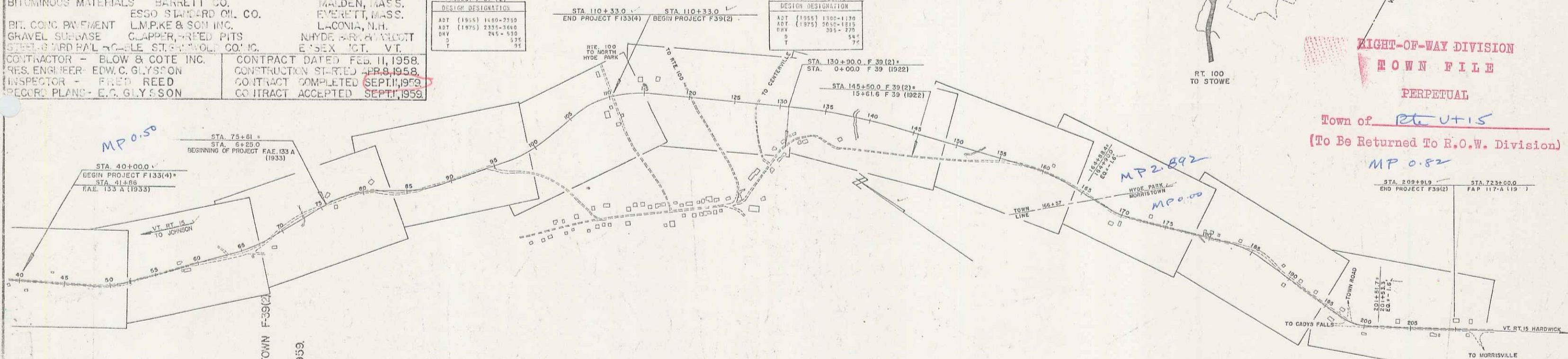
TOWNS OF HYDE PARK & MORRISTOWN
COUNTY OF LAMOILLE
VT. ROUTE 15
JOHNSON - HARDWICK ROAD

FEDERAL AID PROJECT
PROJECT HYDE PARK F133(4)
BEGINNING AT A POINT 7033.0 FEET NORTHWEST OF THE WESTERLY INTERSECTION OF VT ROUTES 100 AND 15 AND EXTENDING SOUTHEASTERLY 7033.0 FEET.
LENGTH OF PROJECT 7033.0 FEET = 1.332 MILES.

PROJECT HYDE PARK-MORRISTOWN F39(2)
BEGINNING AT THE WESTERLY INTERSECTION OF VT ROUTES 100 AND 15 AND EXTENDING SOUTHEASTERLY 9955.7 FEET.
LENGTH OF PROJECT 9955.7 FEET = 1.885 MILES.

PROJECT F 39 (2)	
ADT (1955)	1600-2500
ADT (1975)	2300-3600
DEV	245-520
T	525
	52

DESIGN DESIGNATION	
ADT (1955)	1300-1390
ADT (1975)	2600-2800
DEV	300-370
T	54
	54



CONVENTIONAL SIGNS

COUNTY LINE	---
TOWN LINE	---
PERM. SIGN	---
STONE WALL	---
UNFENCED PROPERTY	---
GUARD RAIL	---
TRAVELED WAY	---
RAILROAD	---
RETAINING WALL	---
CENTER LINE	---
SHRUBS LINE	---
CULVERT	---
DROP INLET	---
TROLLEY POLE	---
POWER POLE	---
TELEPHONE POLE	---
TRUSS	---
HOUSE	---

CURVE DATA	
DEFLECTION OF ANGLE	Δ
DEGREE OF CURVE	D
RADIUS OF CURVE	R
TANGENT DISTANCE	T
LENGTH OF CURVE	L
EXTERNAL DISTANCE	E
POINT OF INTERSECTION	PI
POINT OF CURVE	P.C.
POINT OF TANGENT	P.T.
POINT ON TANGENT	P.O.T.
POINT ON SUB-TANGENT	P.O.S.T.

SCALES	
TITLE	1" = 500'
TYPICAL	1" = 2-8"
PLAN	1" = 50'
PROFILE HORIZONTAL	1" = 50'
PROFILE VERTICAL	1" = 10'
CROSS-SECTIONS	1" = 5 1/2'

NOTE: ANY FURTHER INFORMATION CONCERNING FINAL QUANTITIES, ACCOUNTS OR OTHER DETAILS RELATIVE TO THIS PROJECT MAY BE FOUND IN EITHER THE FIELD BOOKS OR THE ESTIMATE FILE.

THESE PLANS ARE SUBJECT TO SUCH REVISIONS AS MAY BE REQUIRED BY THE BUREAU OF PUBLIC ROADS OR THE COMMISSIONER OF HIGHWAYS.

CONSTRUCTION IS TO BE CARRIED ON IN ACCORDANCE WITH THE PROVISIONS OF THE STANDARD SPECIFICATIONS FOR HIGHWAY AND BRIDGE CONSTRUCTION OF JANUARY 1955 SUBMITTED TO THE BUREAU OF PUBLIC ROADS AS APPROVED JULY 5, 1956, INCLUDING ALL SUBSEQUENT APPROVED REVISIONS AND SUCH REVISED SPECIFICATIONS AND SPECIAL PROVISIONS AS ARE SUBMITTED WITH THE PLANS.

DEPARTMENT OF COMMERCE
BUREAU OF PUBLIC ROADS

APPROVED <i>[Signature]</i> DISTRICT ENGINEER DATE NOV 7, 1957	APPROVED <i>[Signature]</i> BRIDGE ENGINEER DATE NOV 7, 1957	APPROVED <i>[Signature]</i> DISTRICT ENGINEER DATE NOV 7, 1957	APPROVED <i>[Signature]</i> DATE NOV 7, 1957	APPROVED <i>[Signature]</i> DATE NOV 8, 1957
PROJECT F No. 133(4) & 39(2)				
SHEET 1 OF 133 SHEETS				

WEBSTER-MARTIN, INC. CONSULTING ENGINEERS, 80 BURLINGTON, VERMONT.

SPALLING
WESTER-MARTIN, INC.
5-55
5-55

SPALLING
WESTER-MARTIN, INC.
5-55
5-55

As shown on plan of Present Site Plan.
1.175 - 1.175
1.175 - 1.175 RT
1.175 - 1.175 RT
1.175 - 1.175 LT

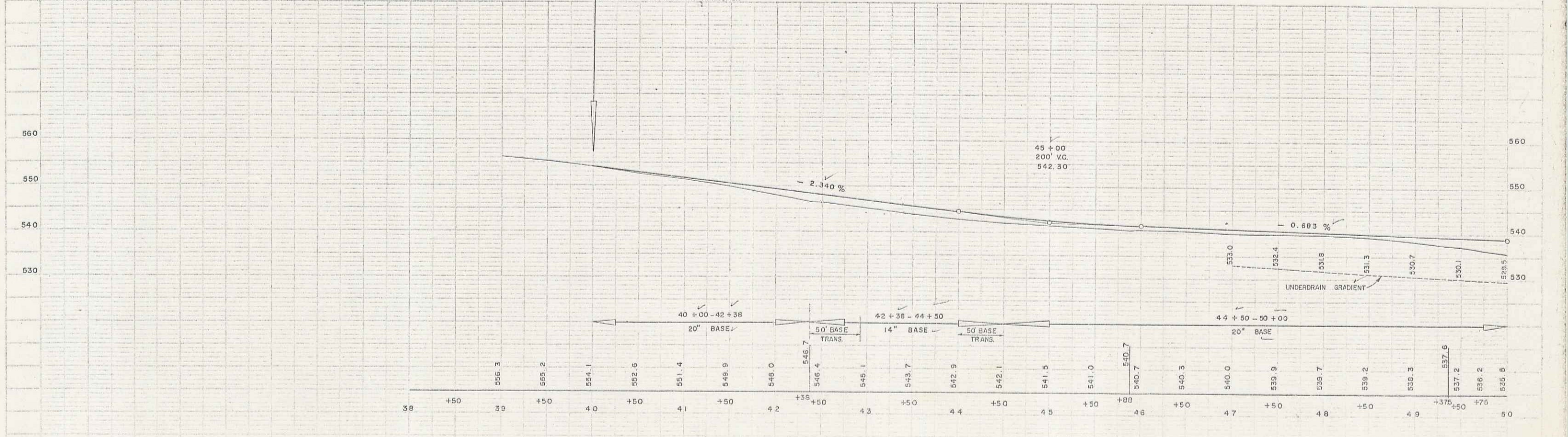
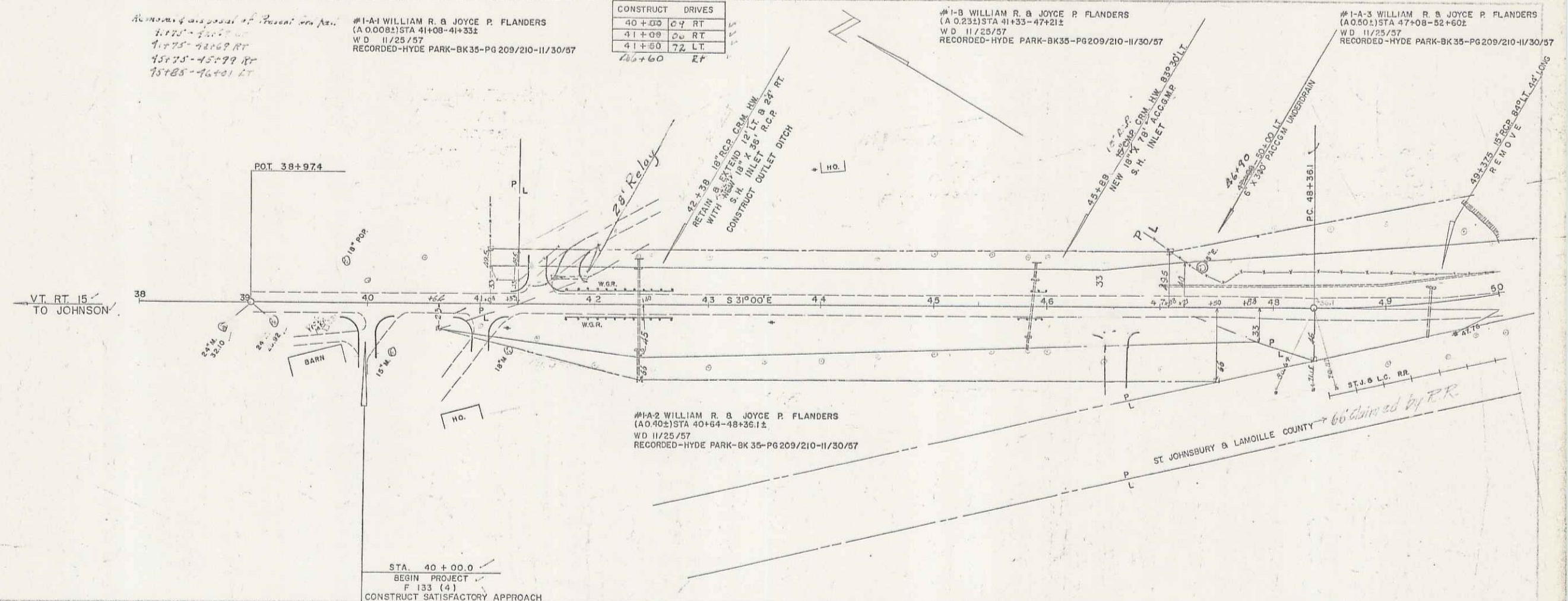
#1-A-1 WILLIAM R. & JOYCE P. FLANDERS
(A 0.008) STA 41+08-41+332
W.D. 11/25/57
RECORDED-HYDE PARK-BK 35-PG 209/210-11/30/57

CONSTRUCT DRIVES	
40+00	0.7 RT
41+00	0.6 RT
41+00	2.2 LT
42+60	EF

#1-B WILLIAM R. & JOYCE P. FLANDERS
(A 0.233) STA 41+33-47+211
W.D. 11/25/57
RECORDED-HYDE PARK-BK 35-PG 209/210-11/30/57

#1-A-3 WILLIAM R. & JOYCE P. FLANDERS
(A 0.001) STA 47+08-52+60E
W.D. 11/25/57
RECORDED-HYDE PARK-BK 35-PG 209/210-11/30/57

#1-A-2 WILLIAM R. & JOYCE P. FLANDERS
(A 0.402) STA 40+64-48+36.12
W.D. 11/25/57
RECORDED-HYDE PARK-BK 35-PG 209/210-11/30/57



HYDE PARK F 133(4)
SHEET 11 OF 133

MRS. PHYLIS S. CURRIE & WILLIAM S. CURRIE, JR.

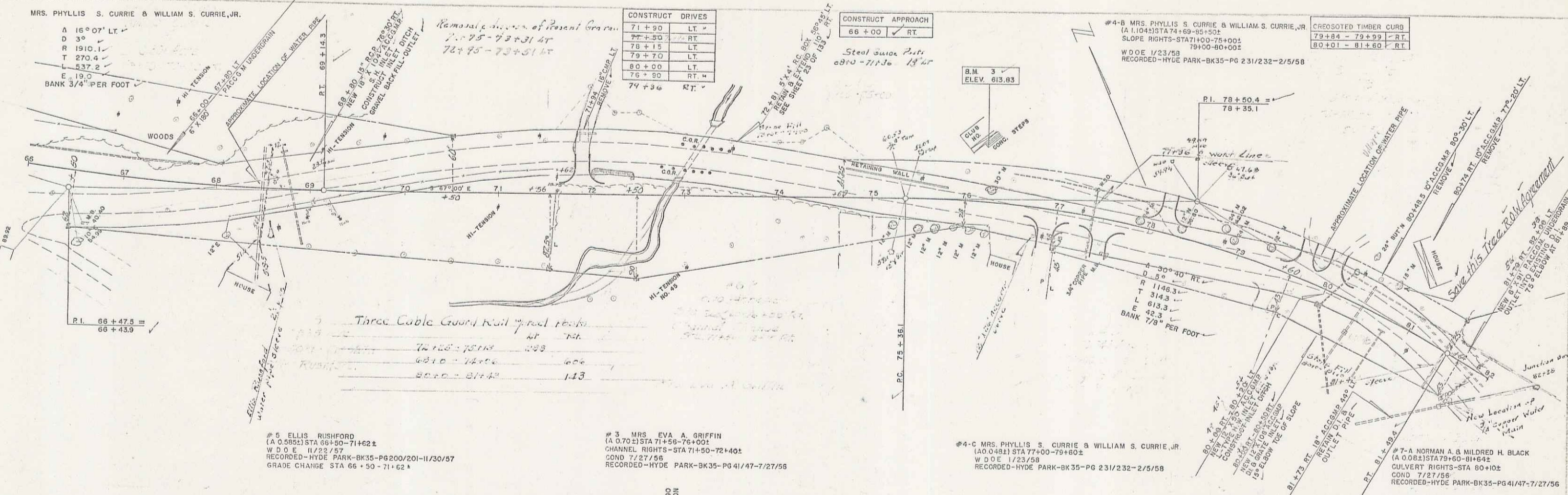
A 16° 07' LT.
D 3°
R 1910.1
T 270.4
L 537.2
E 19.0
BANK 3/4" PER FOOT

CONSTRUCT DRIVES	
71 + 90	LT
77 + 50	RT
78 + 15	LT
79 + 70	LT
80 + 00	LT
76 + 90	RT
74 + 30	RT

CONSTRUCT APPROACH
66 + 00 RT

#4-B MRS. PHYLIS S. CURRIE & WILLIAM S. CURRIE, JR.
(A 1.104) STA 74 + 69 - 85 + 50
SLOPE RIGHTS - STA 74 + 00 - 75 + 00
79 + 00 - 80 + 00
W D O E 1/23/58
RECORDED - HYDE PARK - BK 35 - PG 231/232 - 2/5/58

CROSCOTED TIMBER CURB
79 + 84 - 79 + 93 LT
80 + 01 - 81 + 60 RT

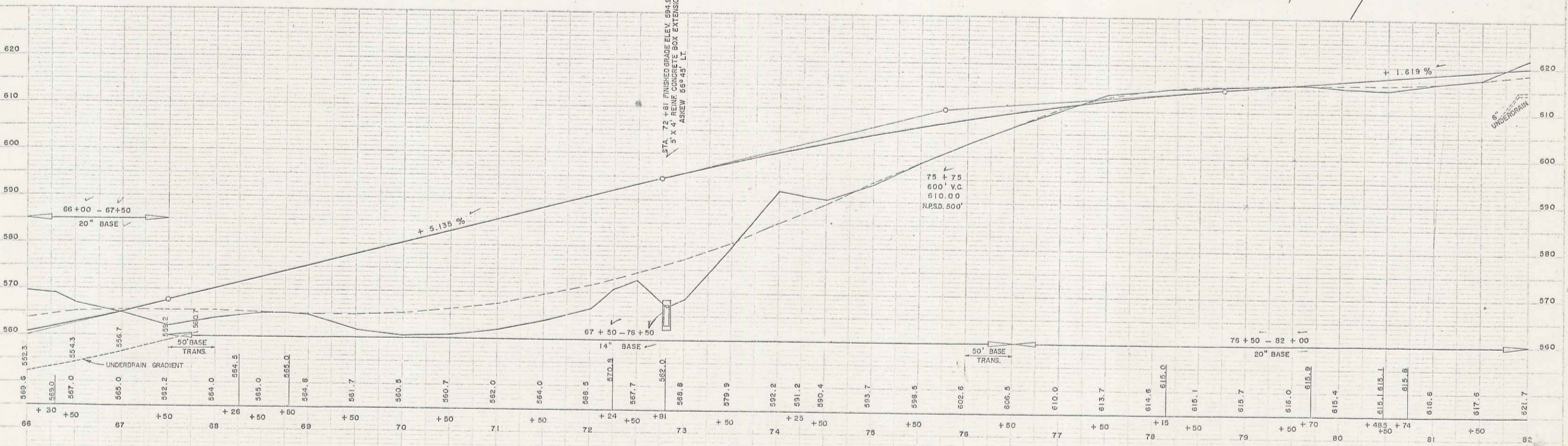


#5 ELLIS RUSHFORD
(A 0.585) STA 66 + 50 - 71 + 62
W D O E 11/23/57
RECORDED - HYDE PARK - BK 35 - PG 200/201 - 11/30/57
GRADE CHANGE STA 66 + 50 - 71 + 62

#3 MRS. EVA A. GRIFFIN
(A 0.702) STA 71 + 55 - 76 + 00
CHANNEL RIGHTS - STA 71 + 50 - 72 + 40
COND 7/27/58
RECORDED - HYDE PARK - BK 35 - PG 41/47 - 7/27/58

#4-C MRS. PHYLIS S. CURRIE & WILLIAM S. CURRIE, JR.
(A 0.048) STA 77 + 00 - 79 + 60
W D O E 1/23/58
RECORDED - HYDE PARK - BK 35 - PG 231/232 - 2/5/58

#7-A NORMAN A. & MILDRED H. BLACK
(A 0.021) STA 79 + 60 - 81 + 82
CULVERT RIGHTS - STA 80 + 10
COND 7/27/58
RECORDED - HYDE PARK - BK 35 - PG 41/47 - 7/27/58



B.M. 3 59' LT. 76 + 20 SPOT BOTTOM CONCRETE STEP ELEV. 613.83

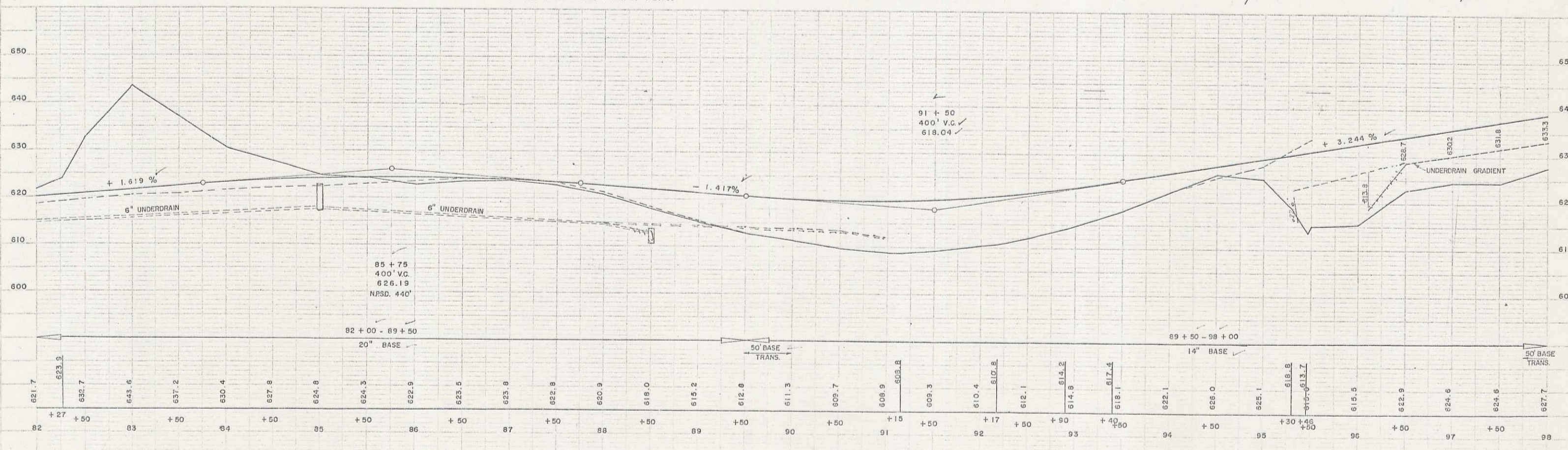
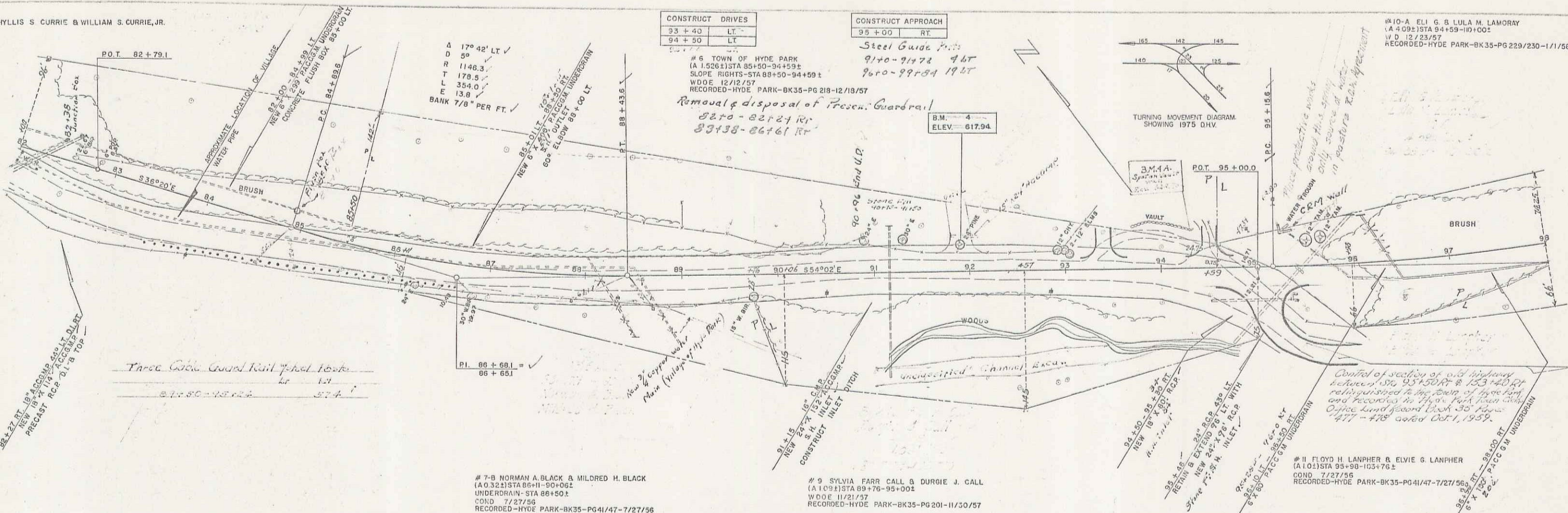
4

MRS. PHYLLIS S. CURRIE & WILLIAM S. CURRIE, JR.

CONSTRUCT DRIVES	
93 + 40	LT
94 + 50	LT

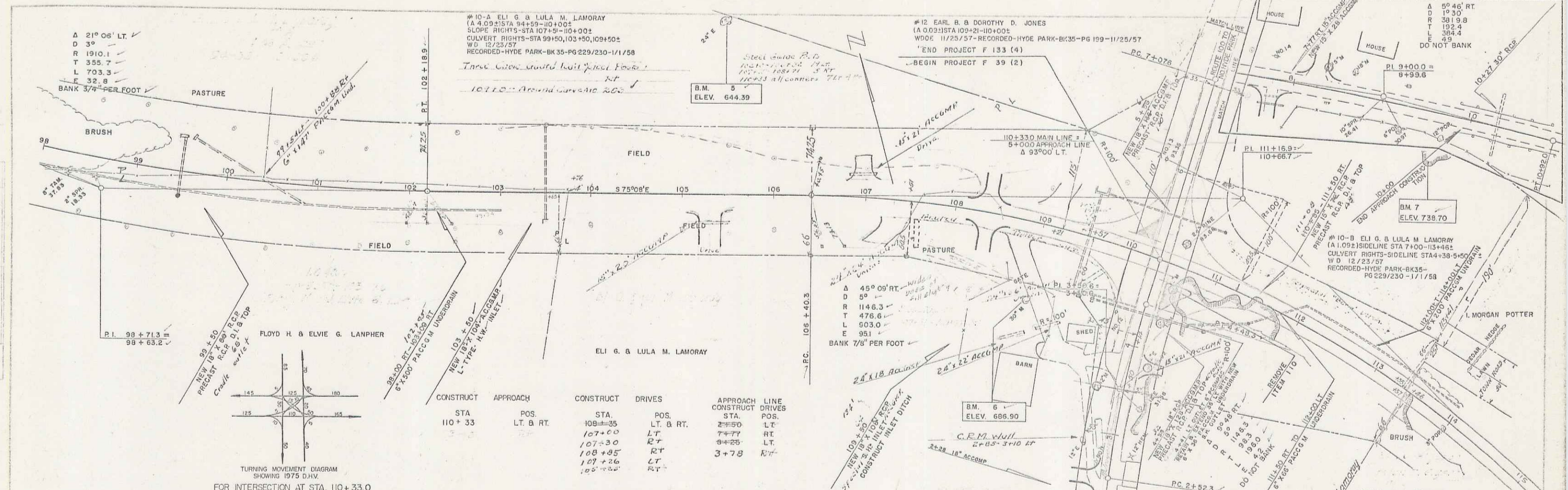
CONSTRUCT APPROACH	
95 + 00	RT

#10-A ELI G. B. LULA M. LAMORAY
(A 4 095) STA 94+59-10+00
V.D. 12/23/57
RECORDED-HYDE PARK-BK35-PG 229/230-1/1/58



B.M. 4 22' LT. 91+90 S.I.T. 24" PINE ELEV. 617.94

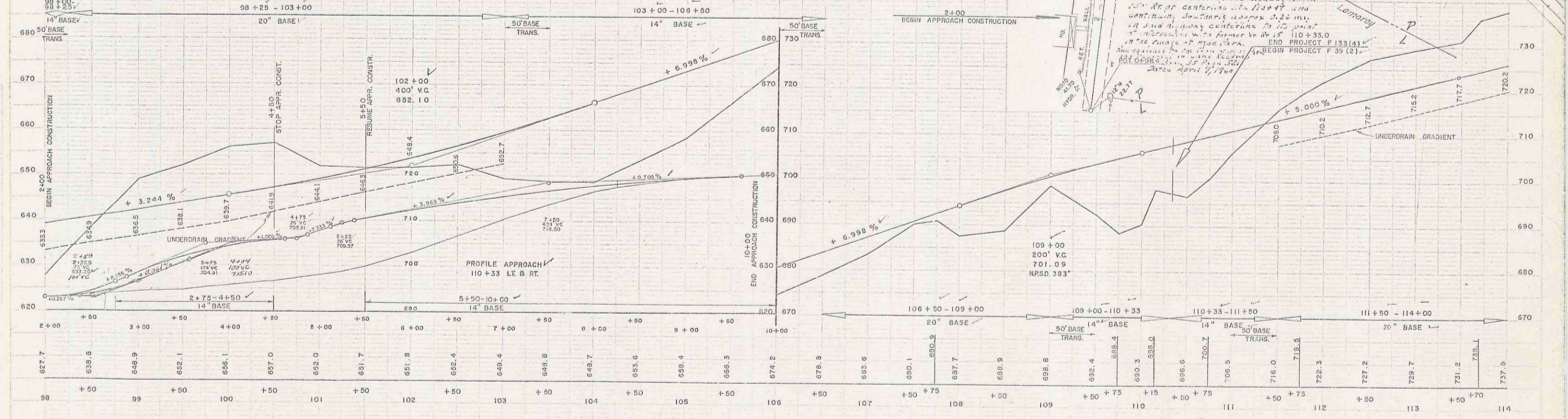
5



TURNING MOVEMENT DIAGRAM
SHOWING 1975 DIV.

FOR INTERSECTION AT STA. 110+33.0

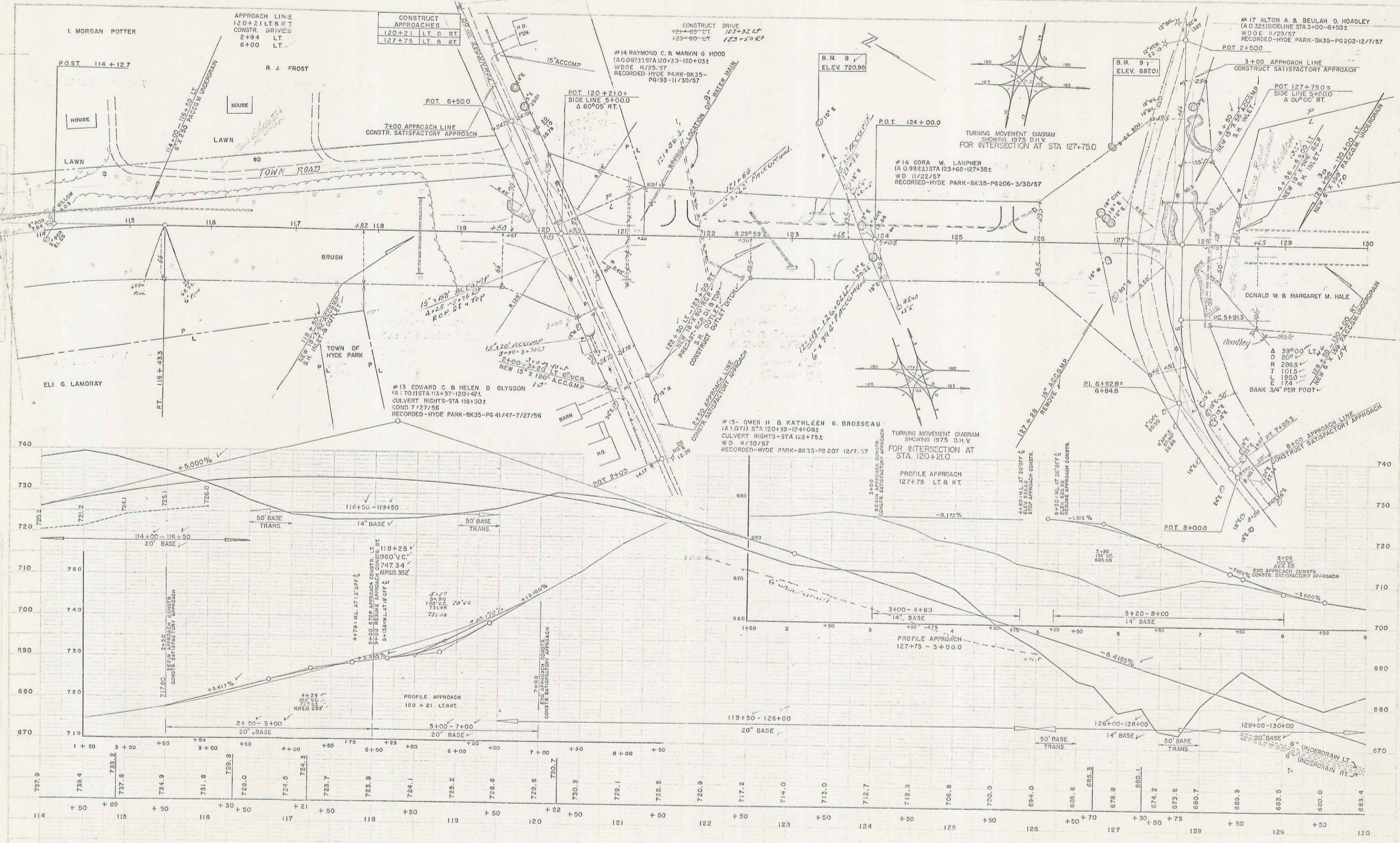
CONSTRUCT	APPROACH	POS.	CONSTRUCT	DRIVES	POS.	CONSTRUCT	APPROACH	LINE
STA		LT. & RT.	STA		LT. & RT.	STA		CONSTRUCT DRIVES
110+33		LT. & RT.	109+35		LT. & RT.	2+50		LT
			107+00		LT	7+77		RT
			107+30		RT	9+25		LT
			108+25		RT	3+78		RT
			107+26		LT			
			105+20		RT			



B.M. 5 189' LT. 105+48 S.I.R. 24" ELM. ELEV. 644.39

B.M. 6 82' RT. 100+99 S.I.R. 30" MAPLE. ELEV. 686.90

HYDE PARK F 133 (1)
HYDE PARK-MORRISTOWN F 39(2)
SHEET 15 OF 133
B.M. 7 210' LT. 112+35 SPOT ON LEVEL. ELEV. 738.70



SPRALLING WEBSTER-MARTIN INC. 11-54 1-55

SPRALLING WEBSTER-MARTIN INC. 11-54 1-55

B.M. 8 137' LT. 123+20 S.L.T. 9" ELM. ELEV. 720.96

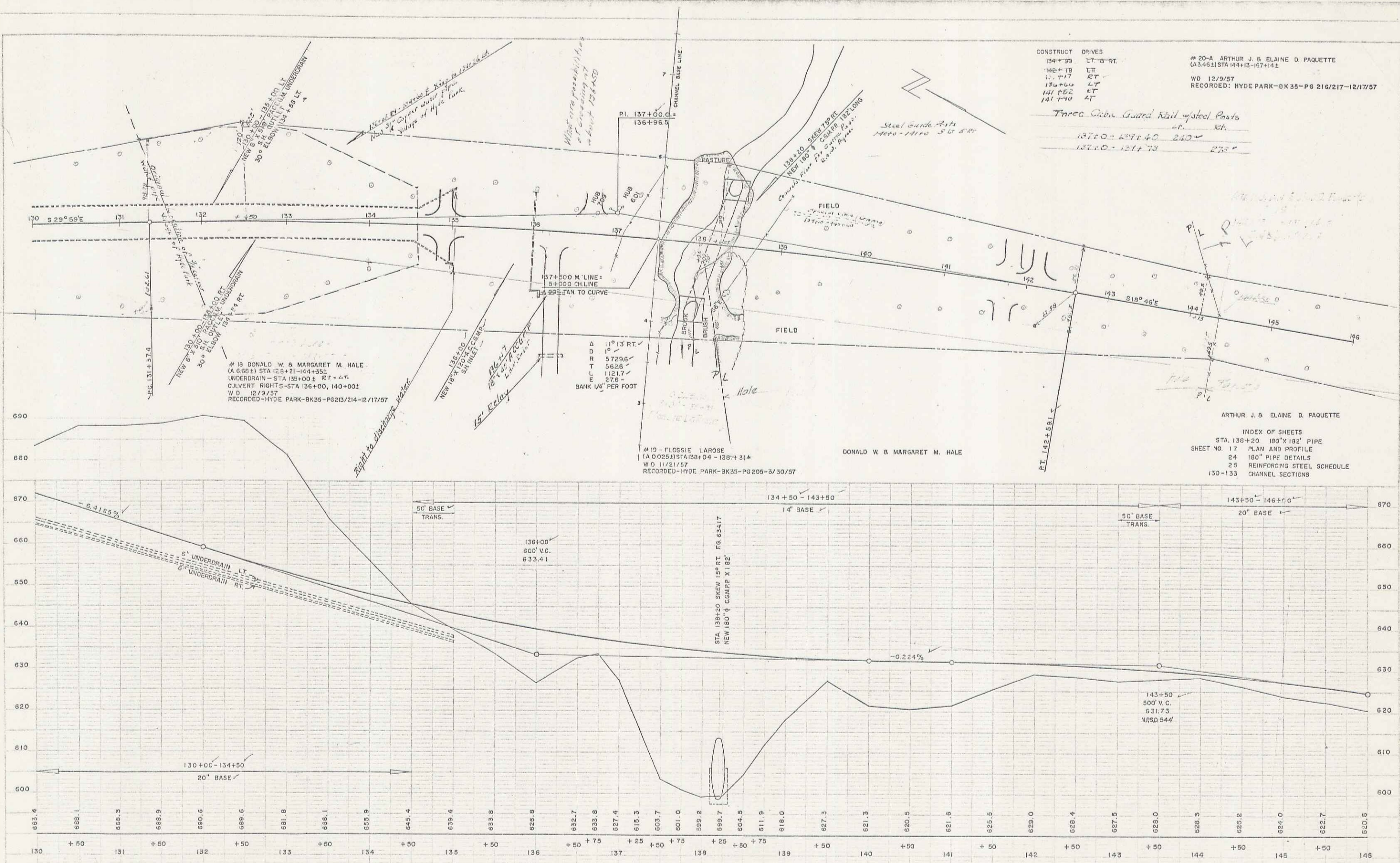
B.M. 9 112' LT. 126+00 HI-POINT 3 CY. BOULDER. ELEV. 697.01

HYDE PARK-MORRISTOWN F39(2)
SHEET 16 OF 133

7

SPALLING
WEBSTER-MARTIN INC.
11-54
1422

SPALLING
WEBSTER-MARTIN INC.
11-54
1422



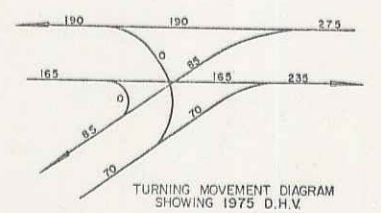
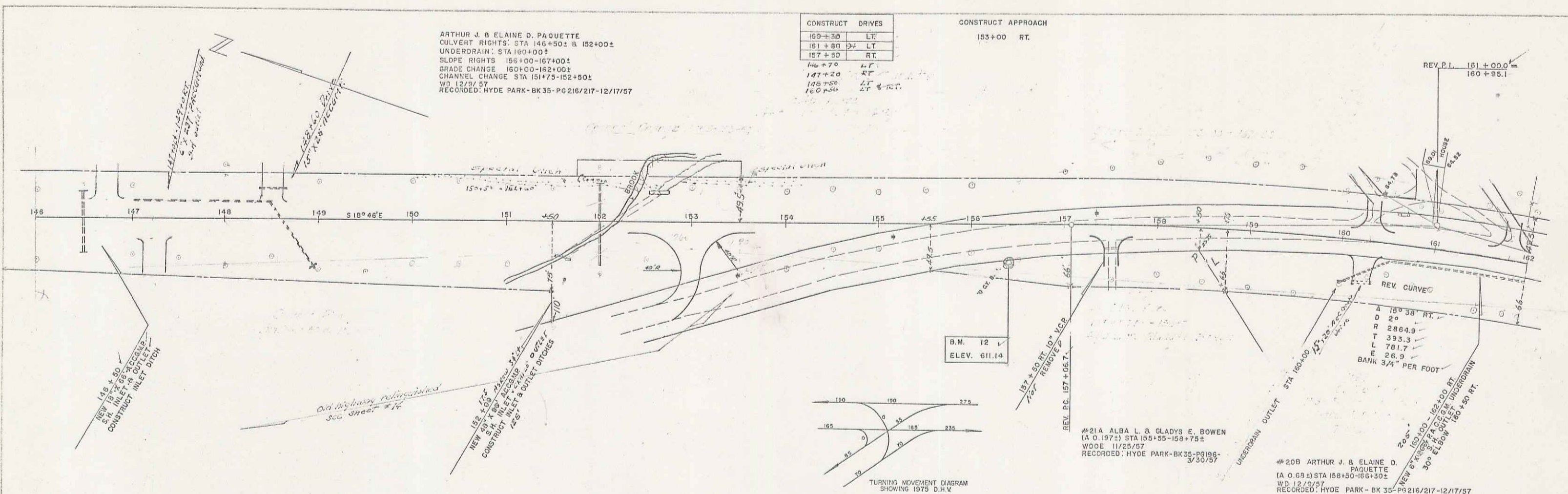
1-54
WESTER-MARTIN INC.
1-54
WESTER-MARTIN INC.

1-54
WESTER-MARTIN INC.
1-54
WESTER-MARTIN INC.

ARTHUR J. & ELAINE D. PAQUETTE
 CULVERT RIGHTS: STA 146+50± TO 152+00±
 UNDERDRAIN: STA 160+00±
 SLOPE RIGHTS: 155+00-167+00±
 GRADE CHANGE: 160+00-162+00±
 CHANNEL CHANGE: STA 151+75-152+50±
 WD 12/9/57
 RECORDED: HYDE PARK - BK 35 - PG 216/217 - 12/17/57

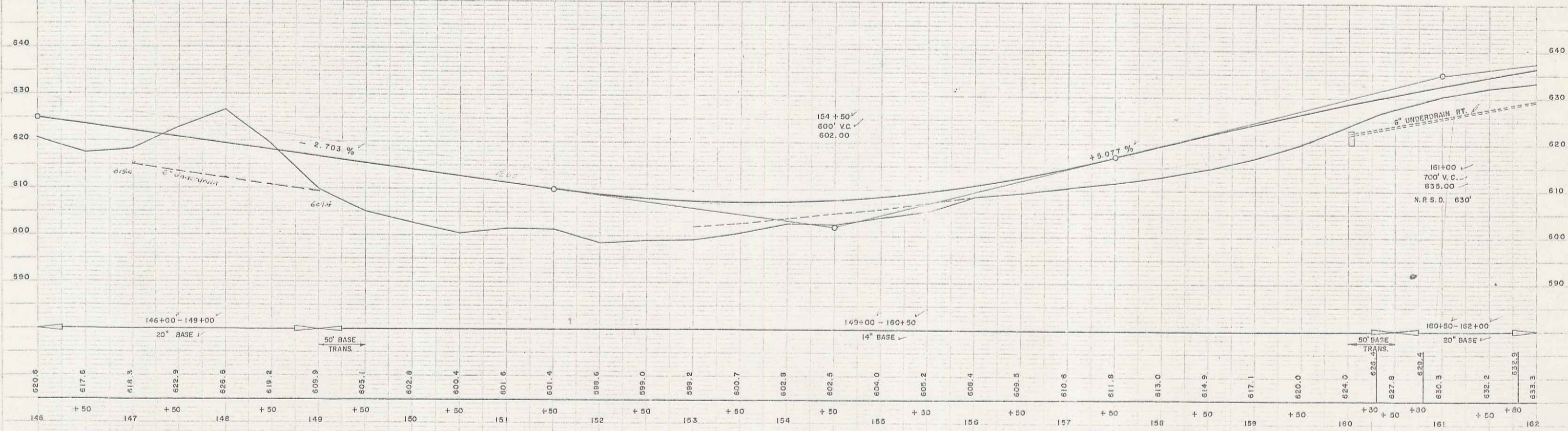
CONSTRUCT DRIVES	
160+30	LT
161+80	LT
157+50	RT

CONSTRUCT APPROACH
153+00 RT.



#21A ALBA L. & GLADYS E. BOWEN
 (A.O. 1971) STA 155+55-158+75±
 WDOE 11/25/57
 RECORDED: HYDE PARK - BK 35 - PG 198-3/30/57

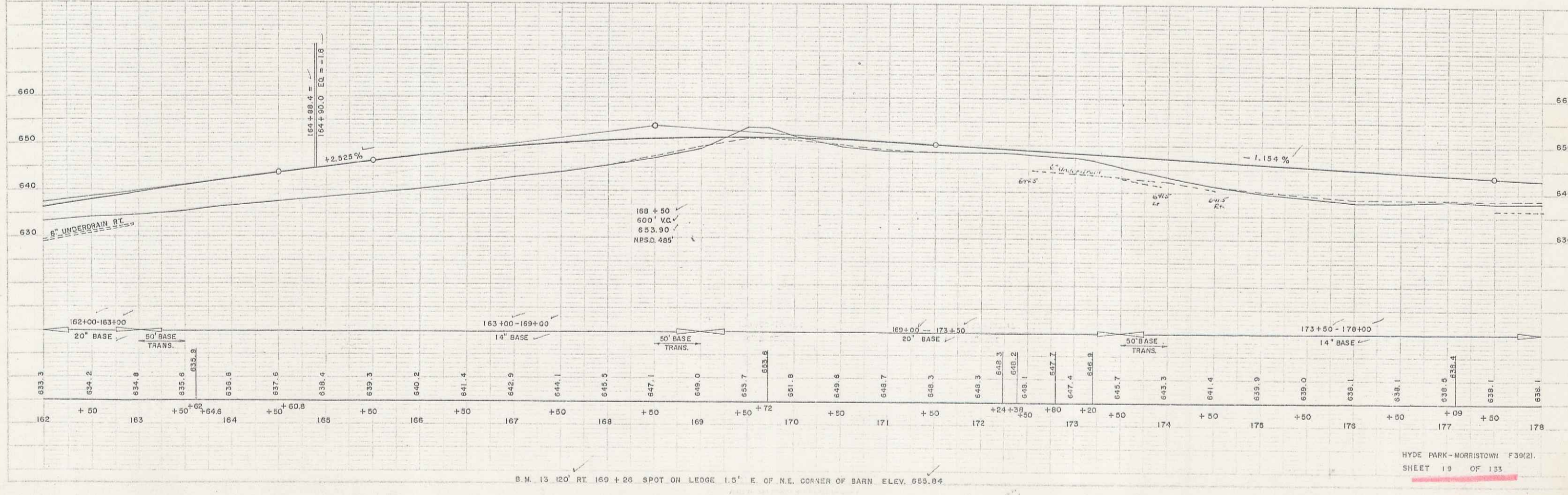
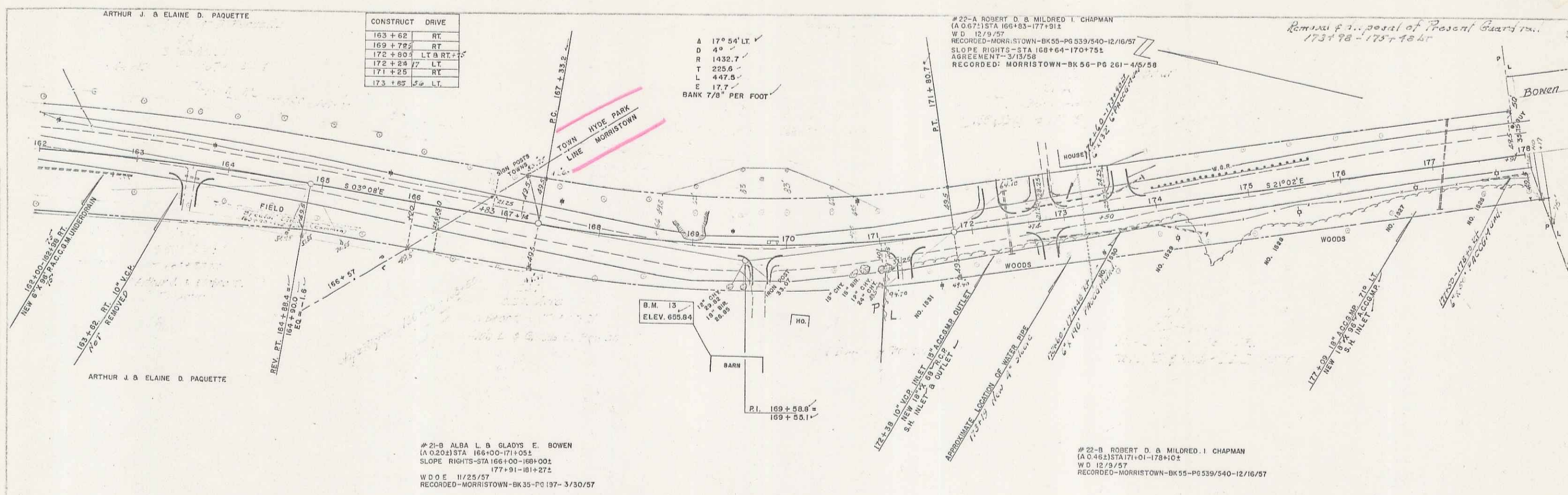
#20B ARTHUR J. & ELAINE D. PAQUETTE
 (A.O. 68±) STA 158+50-166+30±
 WD 12/9/57
 RECORDED: HYDE PARK - BK 35 - PG 216/217 - 12/17/57



B.M. 12 40 RT. 155+39 SPOT AT HI POINT 3 CY BOULDER ELEV. 611.14

HYDE PARK - MORRISTOWN F 39(2)
 SHEET 18 OF 133

9



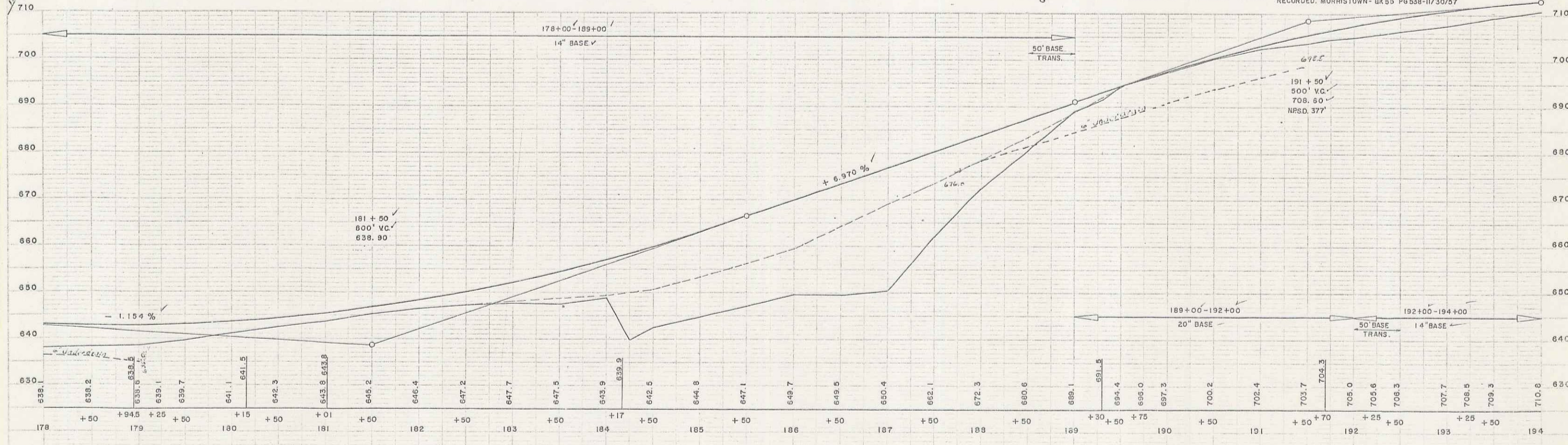
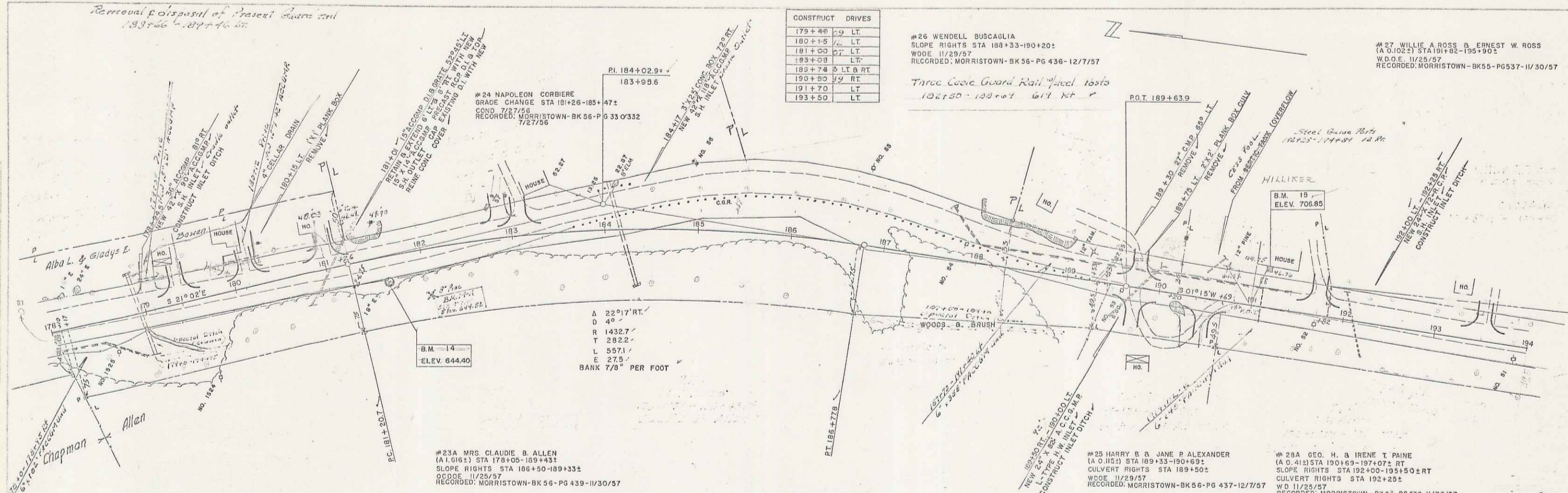
Removal of deposit of gravel from rail
183+66 - 187+46.50

CONSTRUCT DRIVES	
179+40	LT
180+15	LT
181+00	LT
183+08	LT
183+74	LT & RT
190+20	RT
191+70	LT
193+50	LT

#26 WENDELL BUSCAGLIA
SLOPE RIGHTS STA 188+33-190+20
WOODE 11/29/57
RECORDED: MORRISTOWN-BK 56-PG 436-12/7/57

#27 WILLIE A ROSS & ERNEST W ROSS
(A O 1022) STA 191+82-195+90
WO 01 11/25/57
RECORDED: MORRISTOWN-BK 55-PG 537-11/30/57

Three Coles Guard Rail Steel 188+5
182+50 - 188+04 61' RT



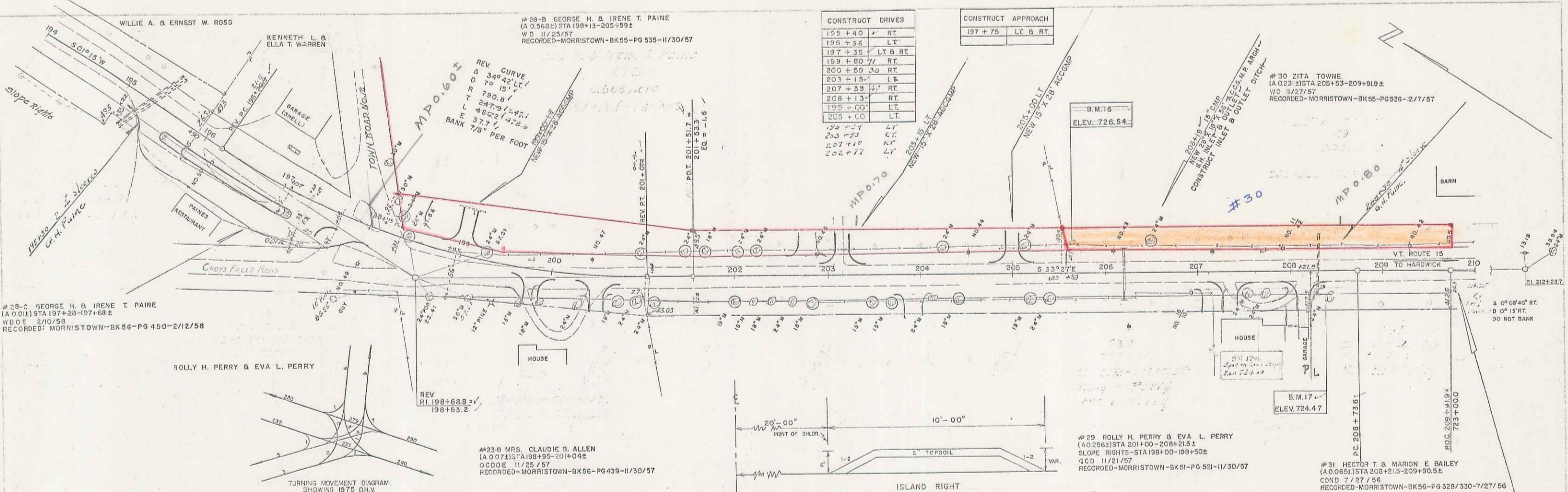
B.M. 14 20' RT. 181+00 SUR. 15' ELM. ELEV. 644.40. B.M. 14 SUR. 15' ELM. ELEV. 644.40. B.M. 14 SUR. 15' ELM. ELEV. 644.40.

B.M. 15 39' LT. 191+17 R.O.C. TOP CONCRETE STEP OF HOUSE ELEV. 706.85

HYDE PARK - MORRISTOWN F 39(2)
SHEET 20 OF 133

DELANO WESTER-MARTIN, INC. 1-55

DELANO WESTER-MARTIN, INC. 1-55

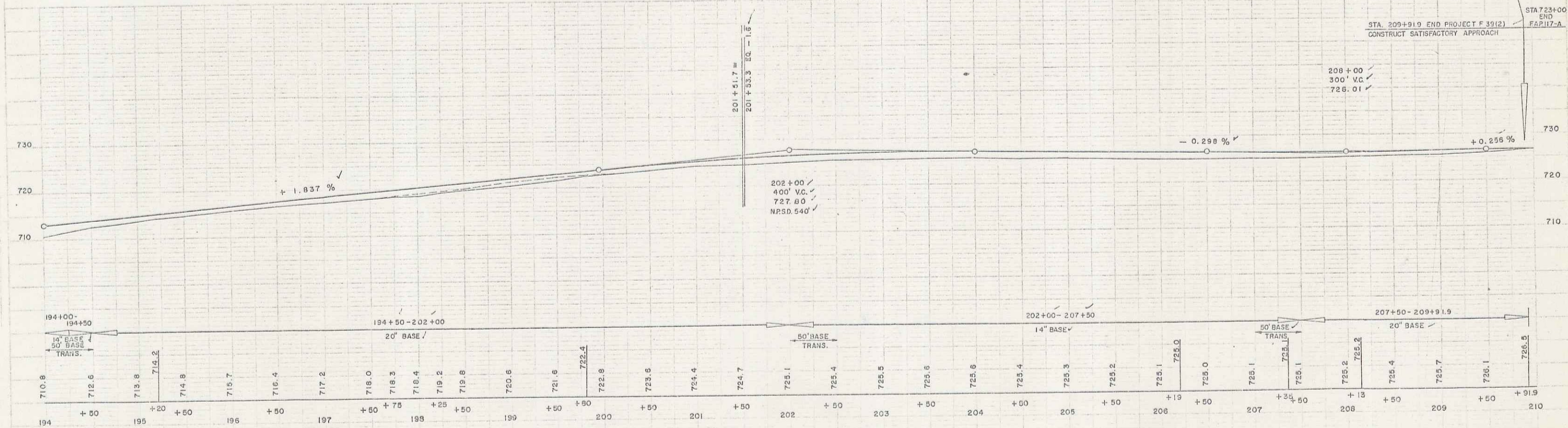


CONSTRUCT DRIVES

195+40	RT
196+35	LT
197+35	LT & RT
199+80	RT
200+80	RT
203+15	LS
207+33	RT
208+13	RT
199+00	LT
205+00	LT
205+27	LT
205+28	LT
207+10	LT
202+77	LT

CONSTRUCT APPROACH

197+75	LT & RT
--------	---------



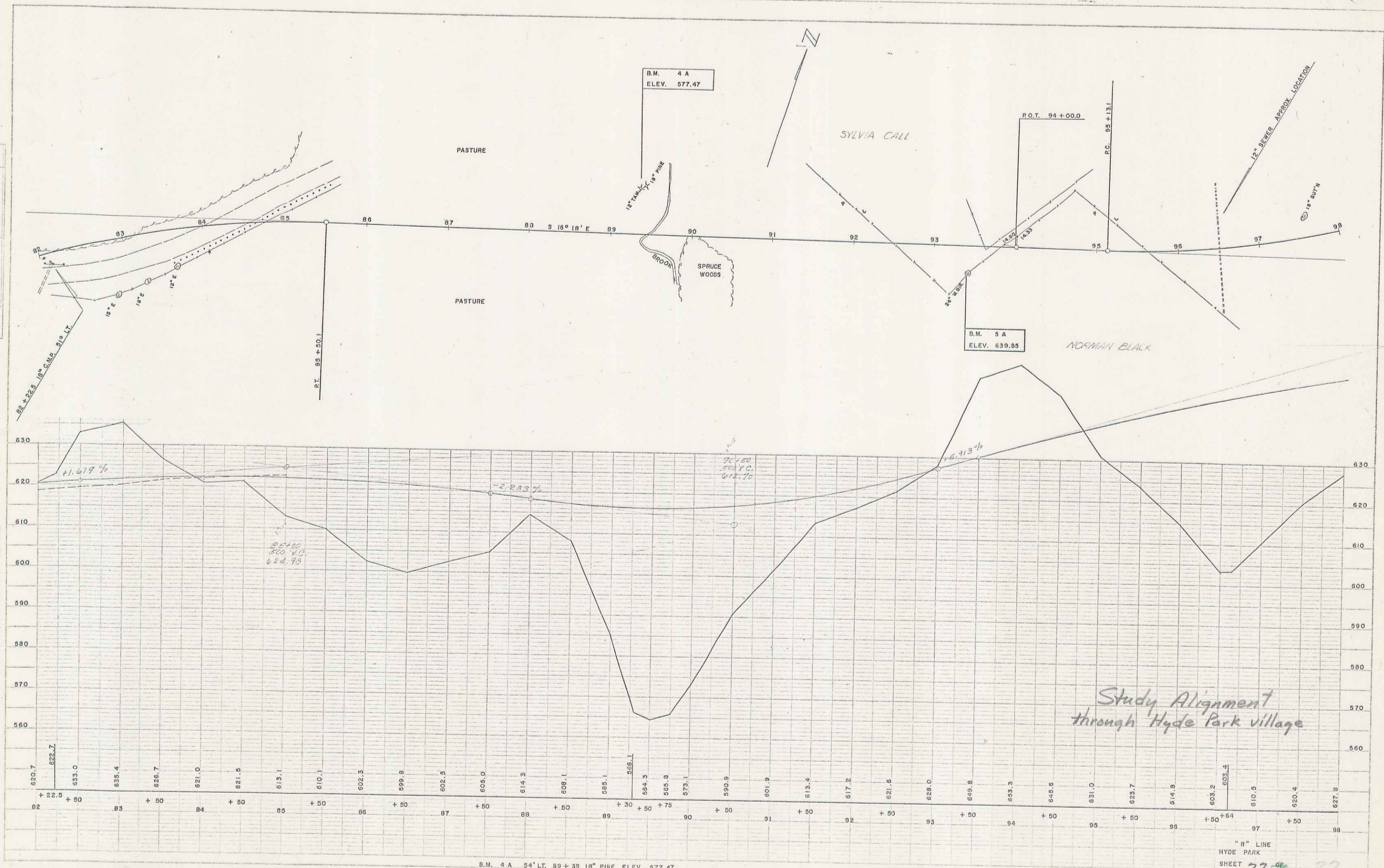
B.M. 16 29' LT. 205+03 SPIKE IN TOP STUMP ELEV. 726.54
 B.M. 17 S.R. 24' MAPLE 28' RT 203+40 ELEV. 724.47 = 724.53 OLD B.M. 99

HYDE PARK - MORRISTOWN F39(2)
 SHEET 21 OF 133

12

PLAN
 WESTFIELD, MASS.
 WESTFIELD-MARTIN, INC.
 12-54
 1-55

PROF. A. J. DELABO
 WESTFIELD-MARTIN, INC.
 12-54
 1-55



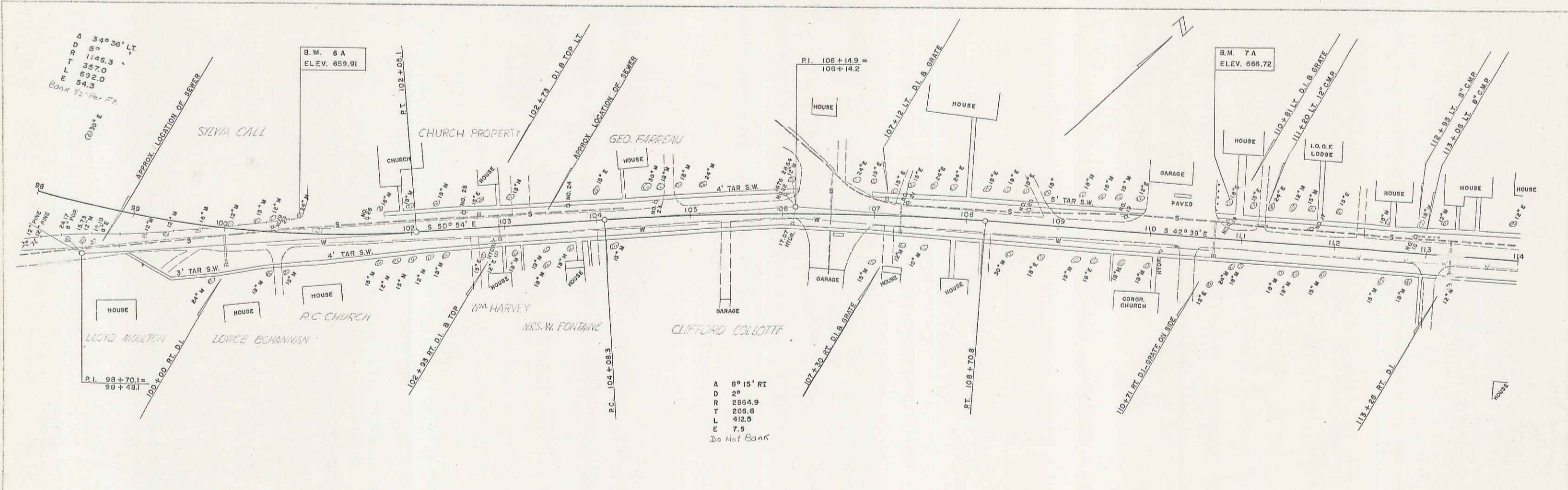
B.M. 4 A 54' LT. 89 + 39 18" PINE ELEV. 577.47
 B.M. 5 A 32' RT. 93 + 39 24" W. BIRCH ELEV. 639.85

"B" LINE
 HYDE PARK
 SHEET 22-06 22

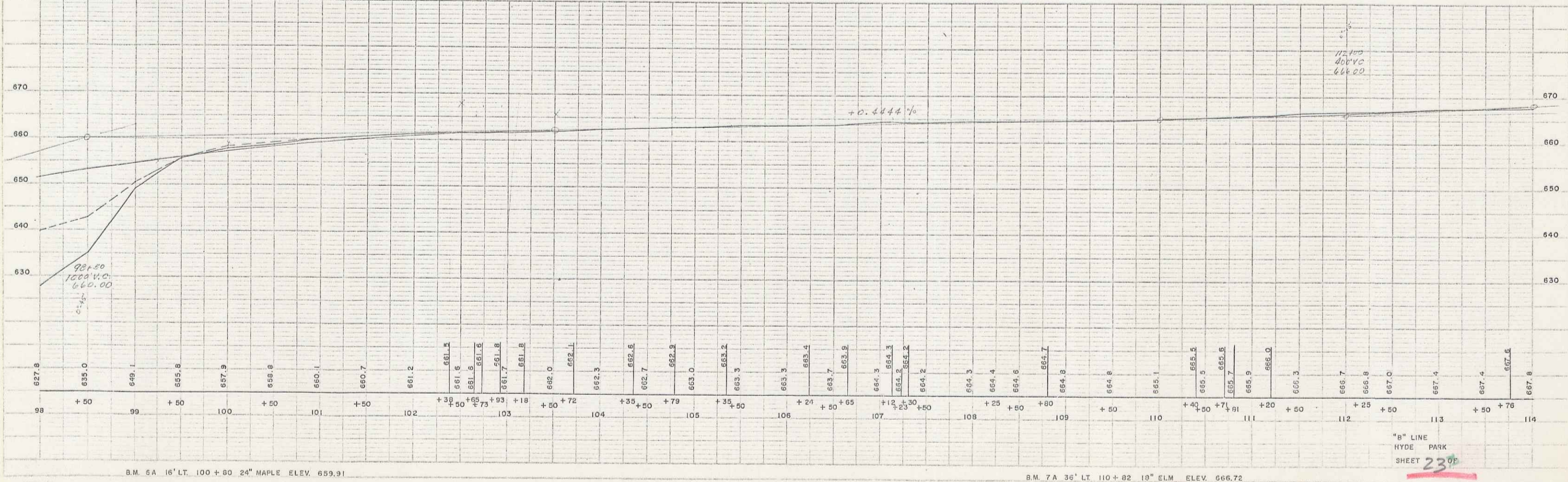
* Not built as Surveyed only 13

WESTERN-MARTIN INC. 11-25
 PL/VI
 WESTERN-MARTIN INC. 11-25
 WESTERN-MARTIN INC. 11-25

WESTERN-MARTIN INC. 11-25
 WESTERN-MARTIN INC. 11-25
 WESTERN-MARTIN INC. 11-25



A 8° 15' RT
 D 20
 R 2854.9
 T 205.6
 L 412.5
 E 7.5
 Do Not Bank



B.M. 5A 16' LT. 100+60.24" MAPLE ELEV. 659.91

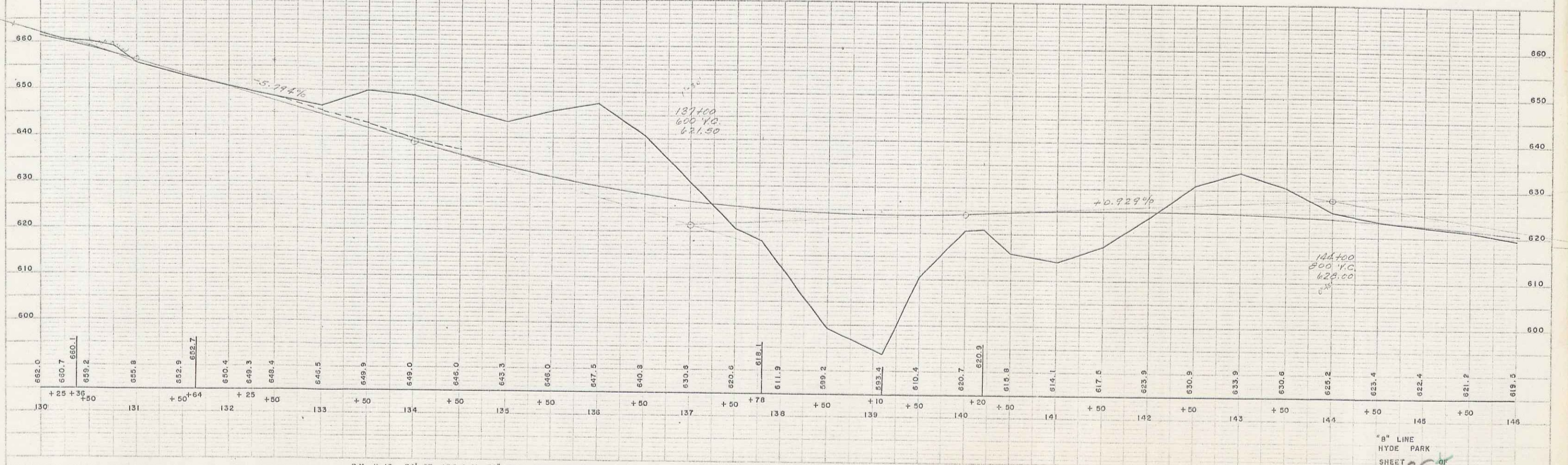
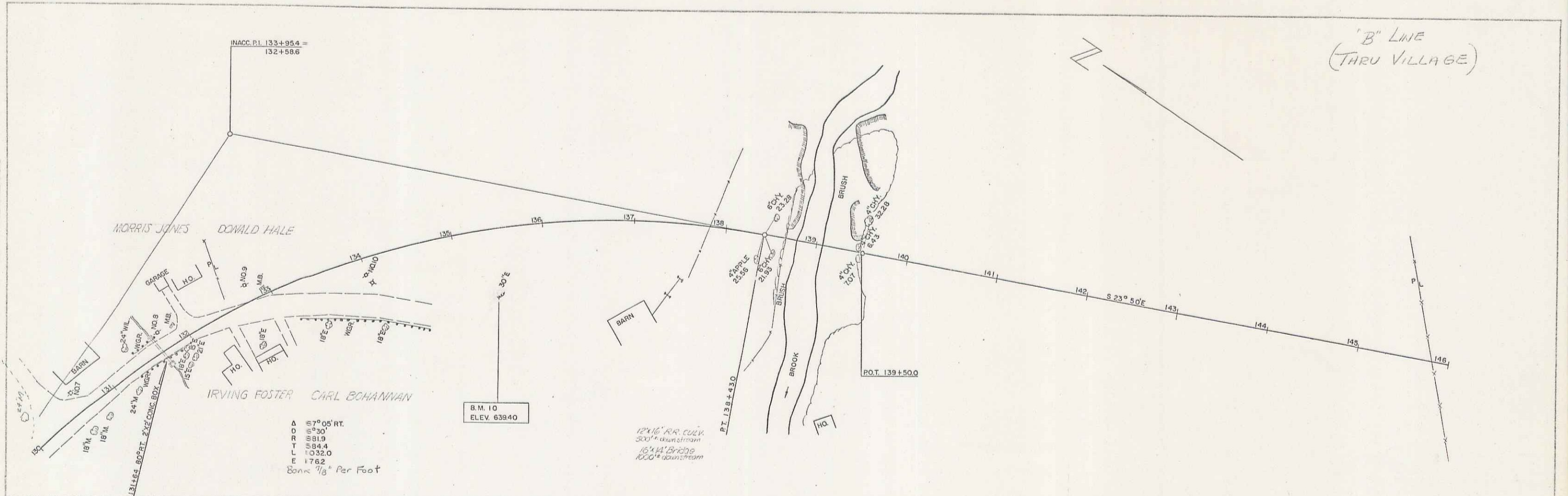
B.M. 7A 36' LT. 110+82.19" ELM ELEV. 666.72

"B" LINE
 HYDE PARK
 SHEET 23 OF

14

PLAN
 SPALLING II-54
 WESTER-MARTIN INC. 1-55

DELAND
 WESTER-MARTIN INC. 1-55



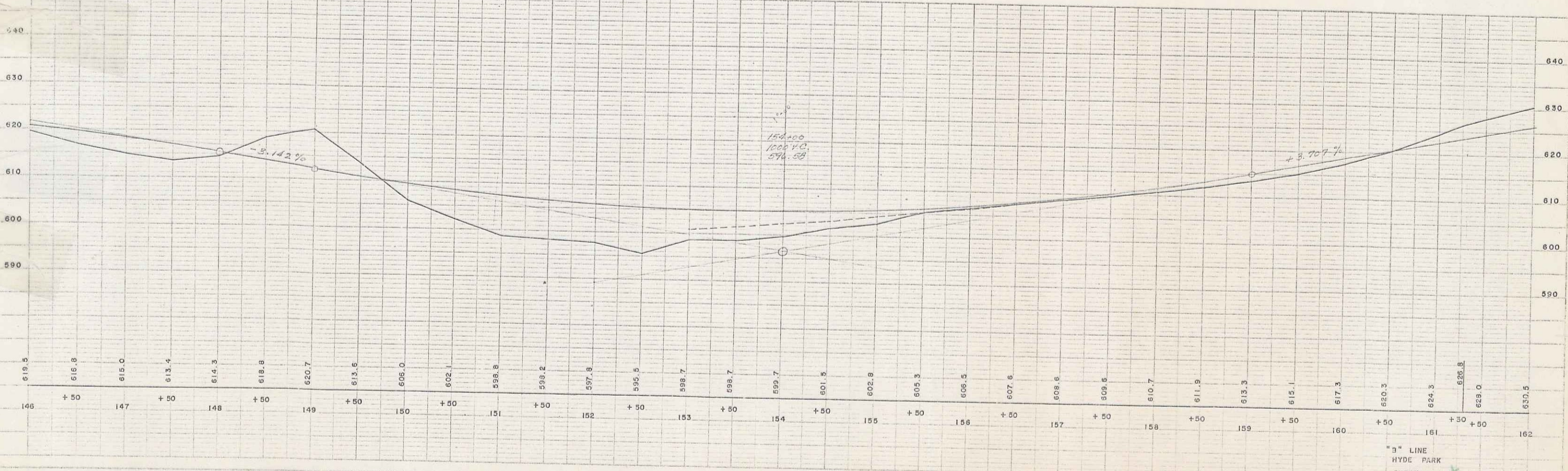
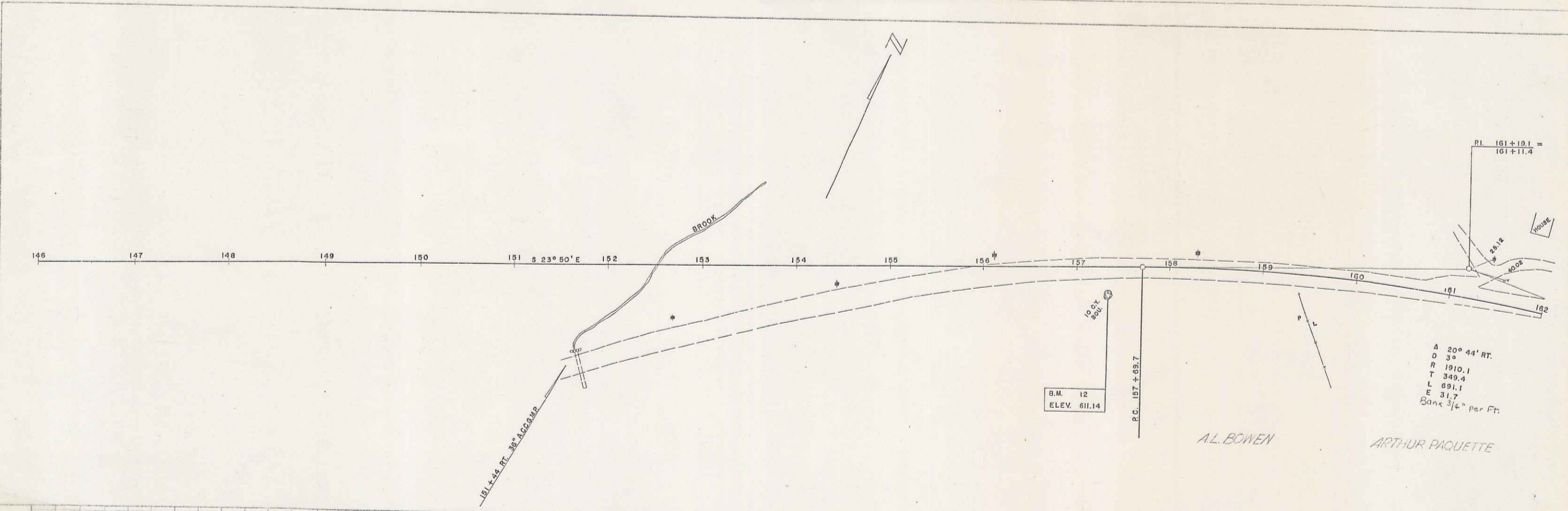
B.M. # 10 74' RT. 135 + 41 30" ELM. ELEV. 639.40

"B" LINE
 HYDE PARK
 SHEET 25

16

PLAN
 11-54
 WESTER-MARTIN INC.

11-54
 WESTER-MARTIN INC.



A.L. BOWEN
 ARTHUR PAQUETTE

B.M. 12 28' RT. 157 + 30 3 C.Y. BOULDER ELEV. 611.14

"B" LINE
 HYDE PARK
 SHEET 26 OF

17