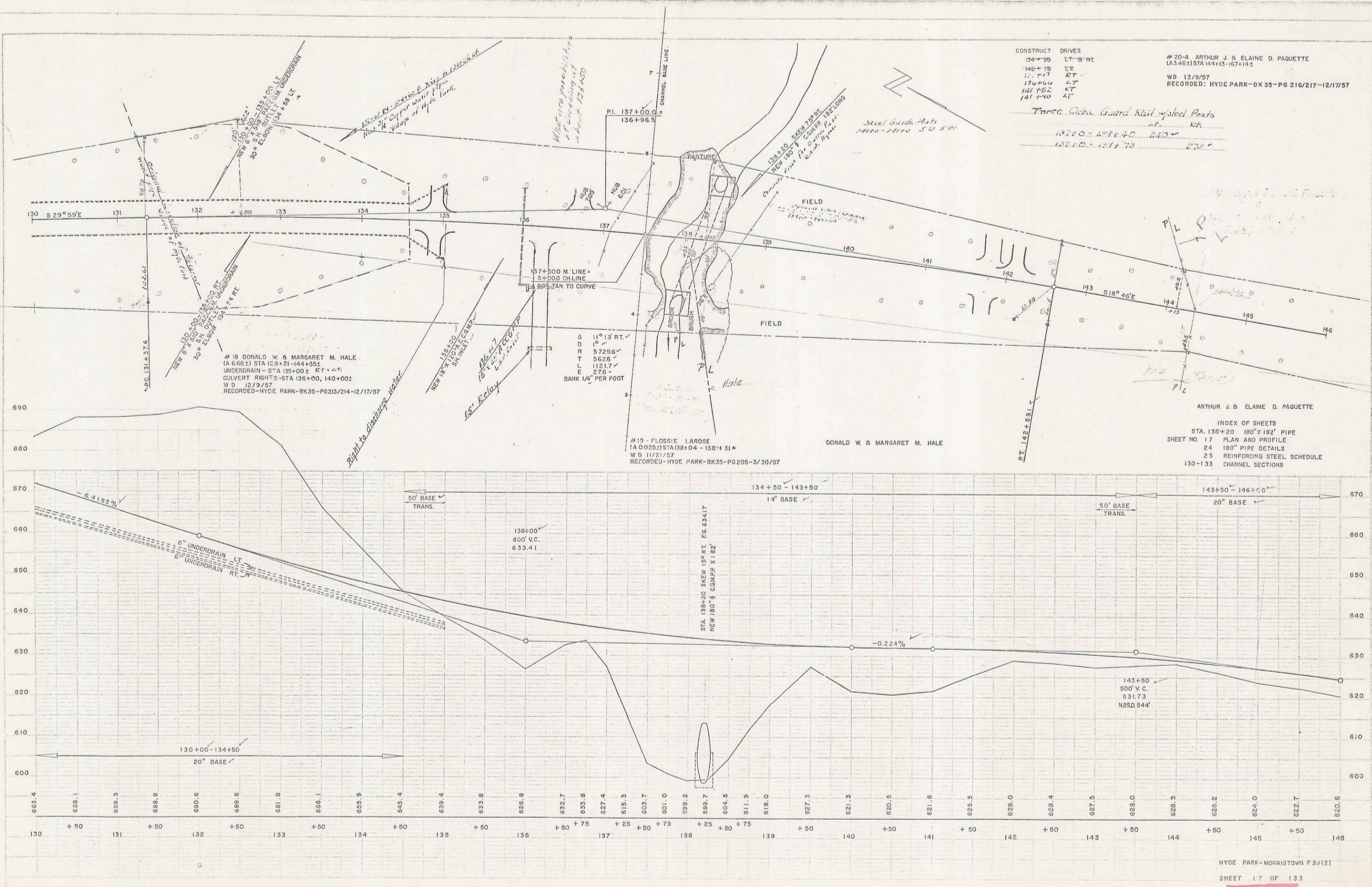


SPALLING  
WEBSTER-MARTIN, INC.  
11-54  
1422

SPALLING  
WEBSTER-MARTIN, INC.  
11-54  
1422



CONSTRUCT DRIVES  
 134+30 LT-B RT  
 142+70 LT  
 134+60 LT  
 141+52 LT  
 141+10 LT

#20-A ARTHUR J. & ELAINE D. PAQUETTE  
 (A3-463) STA 144+12-167+12  
 WD 12/9/57  
 RECORDED: HYDE PARK-DK35-PG 216/217-12/17/57

Three Galv. Guard Rail w/steel Posts  
 137+00-137+40 240'  
 137+00-137+73 273'

ARTHUR J. & ELAINE D. PAQUETTE  
 INDEX OF SHEETS  
 STA. 130+20 180'x182' PIPE  
 SHEET NO. 17 PLAN AND PROFILE  
 24 180' PIPE DETAILS  
 25 REINFORCING STEEL SCHEDULE  
 130-133 CHANNEL SECTIONS