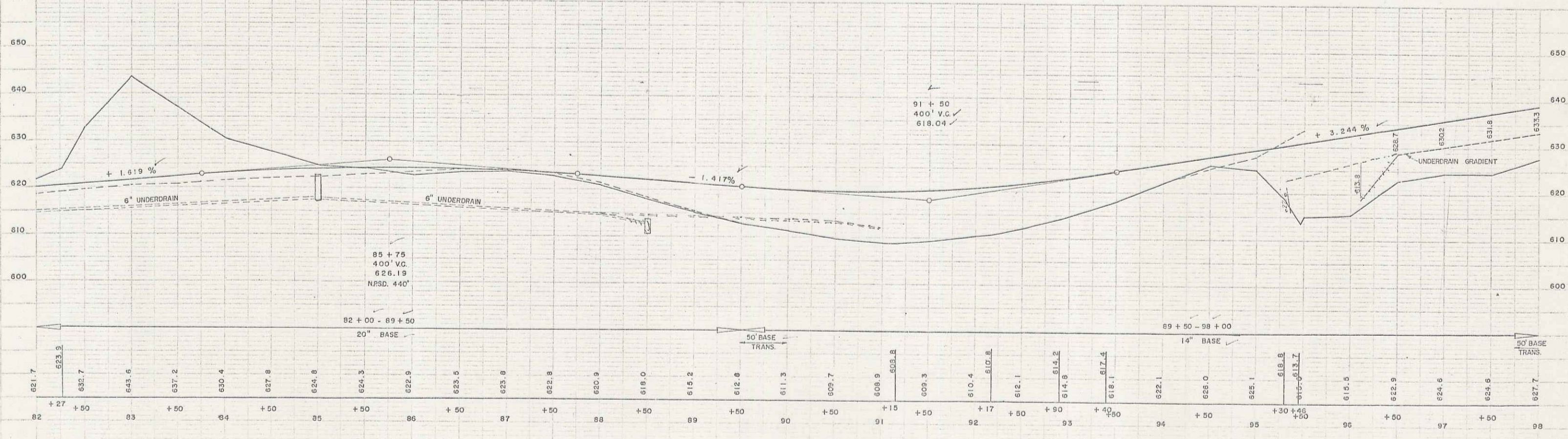
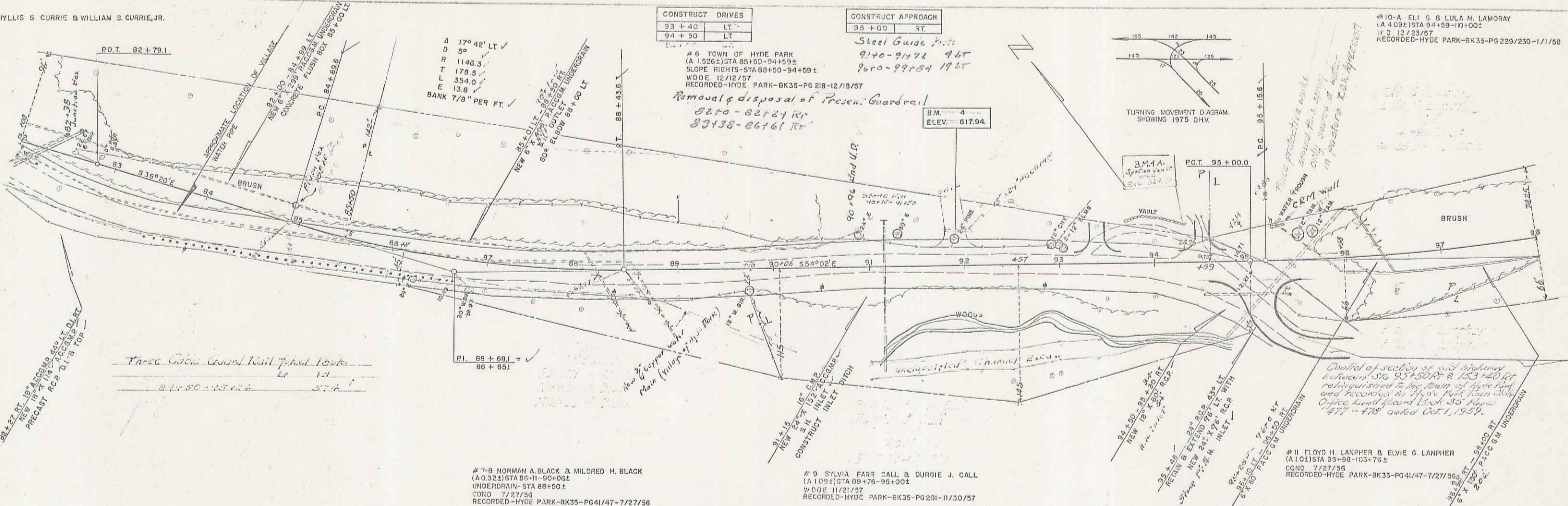


MRS. PHYLLIS S. CURRIE & WILLIAM S. CURRIE, JR.

CONSTRUCT DRIVES	
93 + 40	LT
94 + 50	LT

CONSTRUCT APPROACH	
95 + 00	RT

#10-A ELI G. B. LULA M. LAMORAY  
(A 4 095) STA 94+59-10+00  
V.D. 12/23/57  
RECORDED-HYDE PARK-BK35-PG 229/230-1/1/58



B.M. 4 22' LT. 91+90 S.I.T. 24" PINE ELEV. 617.94

5