

MRS. PHYLIS S. CURRIE & WILLIAM S. CURRIE, JR.

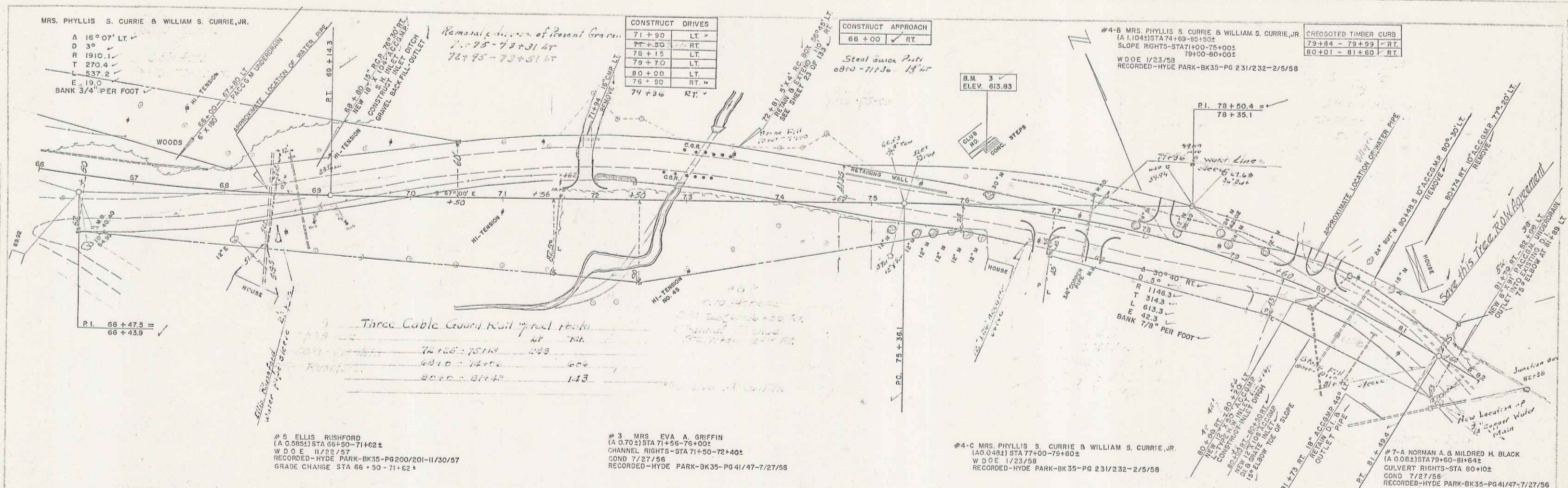
A 16° 07' LT.  
 D 3°  
 R 1910.1  
 T 270.4  
 L 537.2  
 E 19.0  
 BANK 3/4" PER FOOT

CONSTRUCT DRIVES	
71 + 90	LT
77 + 50	RT
78 + 15	LT
79 + 70	LT
80 + 00	LT
76 + 90	RT
74 + 30	RT

CONSTRUCT APPROACH  
 66 + 00 RT

#4-B MRS. PHYLIS S. CURRIE & WILLIAM S. CURRIE, JR.  
 (A 1.104) STA 74 + 69 - 85 + 50  
 SLOPE RIGHTS - STA 74 + 00 - 75 + 00  
 79 + 00 - 80 + 00  
 W D O E 1/23/58  
 RECORDED - HYDE PARK - BK 35 - PG 231/232 - 2/5/58

CROSCOTED TIMBER CURB  
 79 + 84 - 79 + 93 RT  
 80 + 01 - 81 + 60 RT



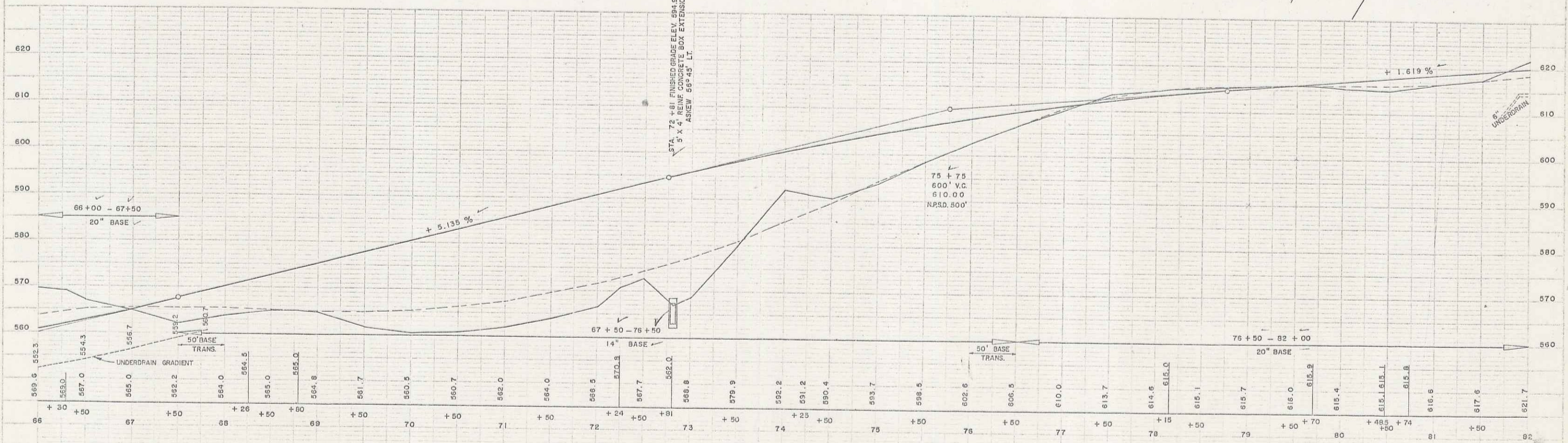
Three Cable Guard Rail posts  
 71.00 - 72.00  
 72.00 - 73.00  
 73.00 - 74.00  
 74.00 - 75.00  
 75.00 - 76.00  
 76.00 - 77.00  
 77.00 - 78.00  
 78.00 - 79.00  
 79.00 - 80.00  
 80.00 - 81.00  
 81.00 - 82.00

#5 ELLIS RUSHFORD  
 (A 0.585) STA 66 + 50 - 71 + 62  
 W D O E 11/23/57  
 RECORDED - HYDE PARK - BK 35 - PG 200/201 - 11/30/57  
 GRADE CHANGE STA 66 + 50 - 71 + 62

#3 MRS. EVA A. GRIFFIN  
 (A 0.702) STA 71 + 55 - 76 + 00  
 CHANNEL RIGHTS - STA 71 + 50 - 72 + 40  
 COND 7/27/58  
 RECORDED - HYDE PARK - BK 35 - PG 41/47 - 7/27/58

#4-C MRS. PHYLIS S. CURRIE & WILLIAM S. CURRIE, JR.  
 (A 0.048) STA 77 + 00 - 79 + 60  
 W D O E 1/23/58  
 RECORDED - HYDE PARK - BK 35 - PG 231/232 - 2/5/58

#7-A NORMAN A. & MILDRED H. BLACK  
 (A 0.021) STA 79 + 60 - 81 + 82  
 CULVERT RIGHTS - STA 80 + 10  
 COND 7/27/58  
 RECORDED - HYDE PARK - BK 35 - PG 41/47 - 7/27/58



B.M. 3 59' LT. 76 + 20 SPOT BOTTOM CONCRETE STEP ELEV. 613.83

HYDE PARK F133(4)  
 SHEET 13 OF 133

4