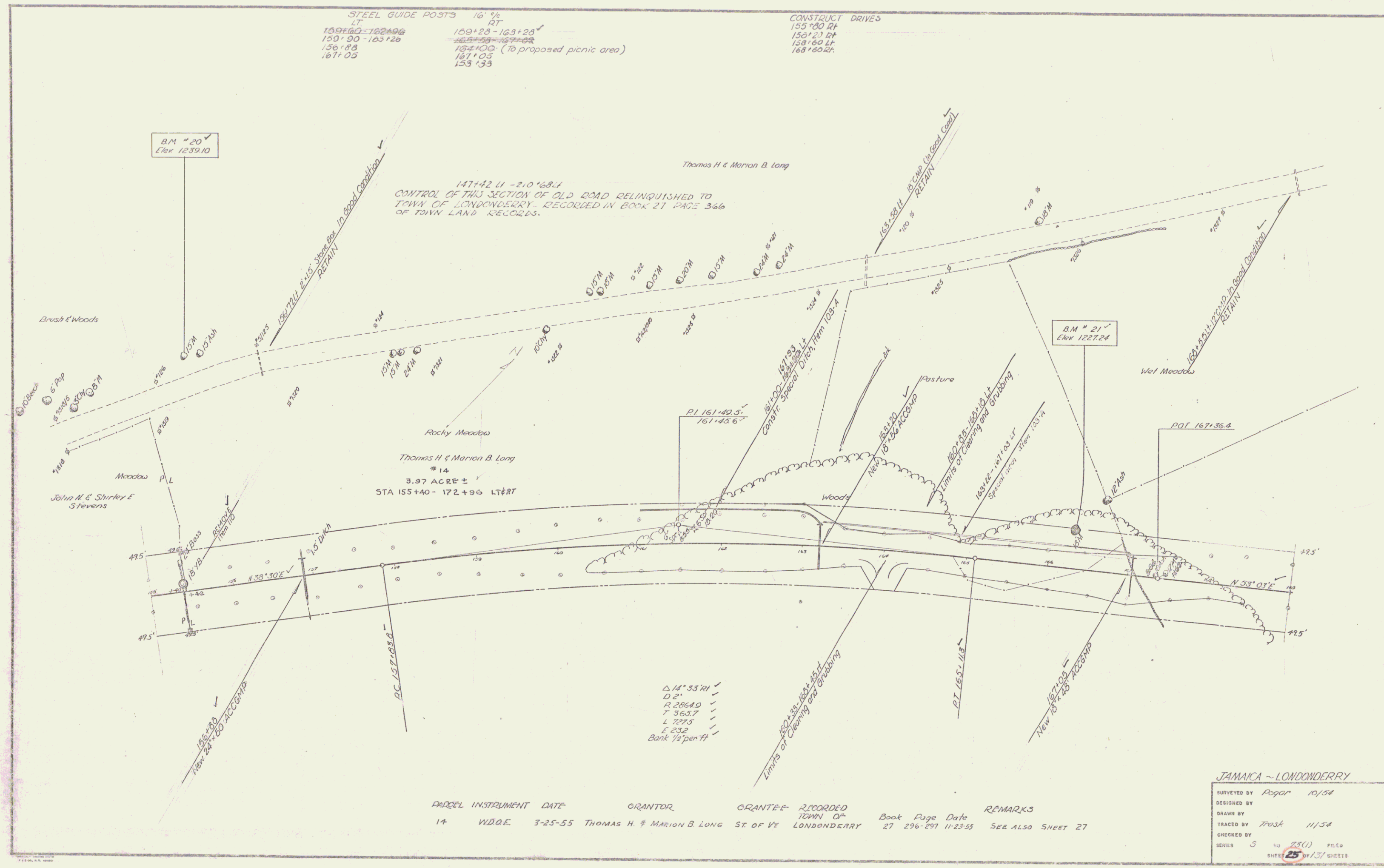


STEEL GUIDE POSTS 16" x 1/2"
 LT RT
 159+28 - 162+96
 150+90 - 103+26
 156+88
 161+05
 159+28 - 163+23
 165+03 - 167+03
 164+00 (To proposed picnic area)
 161+05
 153+33

CONSTRUCT DRIVES
 155+00 RT
 150+21 RT
 158+60 LT
 168+60 Lt.



Δ 14° 53' 41"
 D 2"
 R 2864.0
 T 365.7
 L 727.5
 E 252
 Bank 1 1/2 per ft

| PRICEL INSTRUMENT DATE | GRANTOR | GRANTEE | RECORDED TOWN OF | Book Page Date | REMARKS |
|------------------------|----------------------------|----------|------------------|---------------------|-------------------|
| 14 W.D.O.E. 3-25-55 | THOMAS H. & MARION B. LONG | ST OF VE | LONDONDERRY | 27 296-297 11-23-55 | SEE ALSO SHEET 27 |

JAMAICA - LONDONDERRY

| | | |
|-------------|-------|----------------|
| SURVEYED BY | Repar | 10/54 |
| DESIGNED BY | | |
| DRAWN BY | | |
| TRACED BY | Trush | 11/54 |
| CHECKED BY | | |
| SERIES | 5 | NO 23(1) FILED |
| SHEET | 25 | OF 37 SHEETS |