

INDEX OF SHEETS

SHEET NO.	TITLE PAGE
1	TITLE PAGE
2	TYPICAL CROSS-SECTION OF IMPROVEMENT DOUBLE TACK COAT OF REFINED TAR WITH PEA STONE SEAL (CLASS A) MODIFIED, ITEM 312-A
3	BANKING AND WIDENING TABLES
4	QUANTITY SHEET (ITEMS)
5-6	QUANTITY SHEET (DRAINAGE)
7-11	EARTHWORK SHEETS - ROADWAY
12-31	PLAN AND PROFILE SHEETS
32	PRELIMINARY INFORMATION SHEET (BRIDGE 10+91.0-17+60.0)
33	DETAILS OF ABUTMENT NO 1
34	DETAILS OF ABUTMENT NO 2
35	REINFORCING STEEL SCHEDULE
36	EARTHWORK SHEET (BRIDGE)
37	PRELIMINARY INFORMATION SHEET (BRIDGE 99+72.0-100+41.0)
38	DETAILS OF ABUTMENTS NOS. 1 AND 2
39	REINFORCING STEEL SCHEDULE
40	STANDARD STRUCTURE SHEET SB 5-1 (DETAILS OF BRIDGE RAILING)
41	STANDARD STRUCTURE SHEET SB 1-1 (BARRICADES, SIGNS & LIGHTS) BRIDGES
42	STANDARD STRUCTURE SHEET SB 2-0 (DETAILS C, H, S, K AND L)
43	STANDARD STRUCTURE SHEET SB 3-0 (H-20)-1 (DETAILS OF SUPERSTRUCTURE)
44	STANDARD STRUCTURE SHEET S-40 (BARRICADES, SIGNS & LIGHTS) ROADWAY
45	STANDARD STRUCTURE SHEET S-48-46 (THREE CABLE GUARD RAIL)
46	STANDARD STRUCTURE SHEET S-53-49 (P.C. R.C.P. DROP INLETS)
47	CONSTRUCTION DETAILS CD (DRAINAGE AND MARKERS)
48	CONSTRUCTION DETAILS CD-4 (DITCHES)
49	CONSTRUCTION DETAILS CD-2 (TYPICAL GRADING)
50-127	CROSS-SECTIONS
128-131	CHANNEL SECTIONS

STATE OF VERMONT
DEPARTMENT OF HIGHWAYS
PROPOSED IMPROVEMENT

TOWNS OF JAMAICA-LONDONDERRY

COUNTY OF WINDHAM
VERMONT ROUTE 8
RAWSONVILLE-LONDONDERRY ROAD

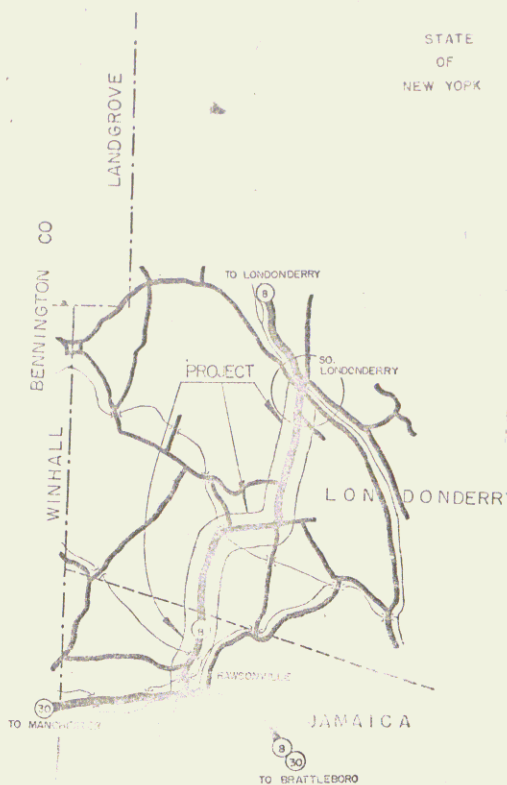
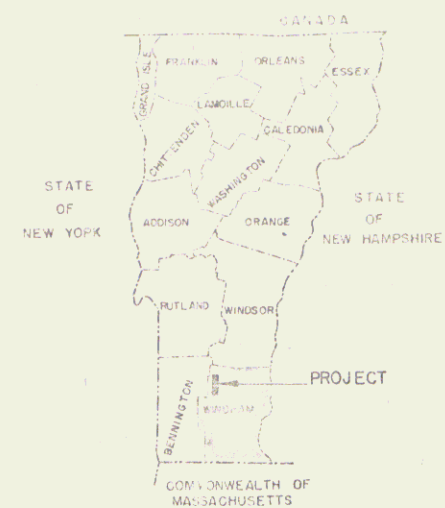
BEGINNING AT THE INTERSECTION OF VERMONT ROUTES 30 AND 8
AND EXTENDING NORTHERLY 20,555.3 FEET, EXCLUDING BRIDGE 3+163-4+02.0

LENGTH OF ROADWAY 20,417.3 FEET = 3.667 MILES
LENGTH OF BRIDGES 138.0 FEET = 0.025 MILE

LENGTH OF PROJECT 20,555.3 FEET = 3.893 MILES

STANDARD STRUCTURE SHEET APPROVED BY THE CHIEF
ENGINEER, VERMONT STATE DEPARTMENT OF HIGHWAYS.

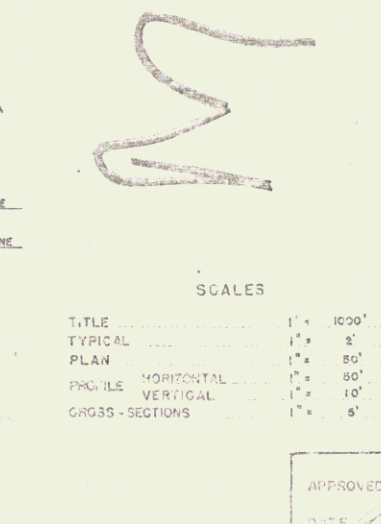
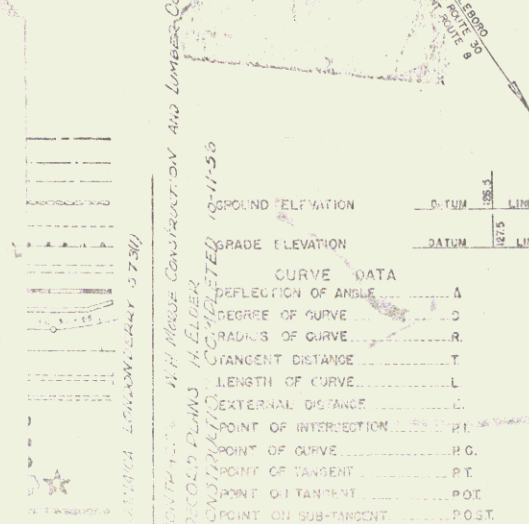
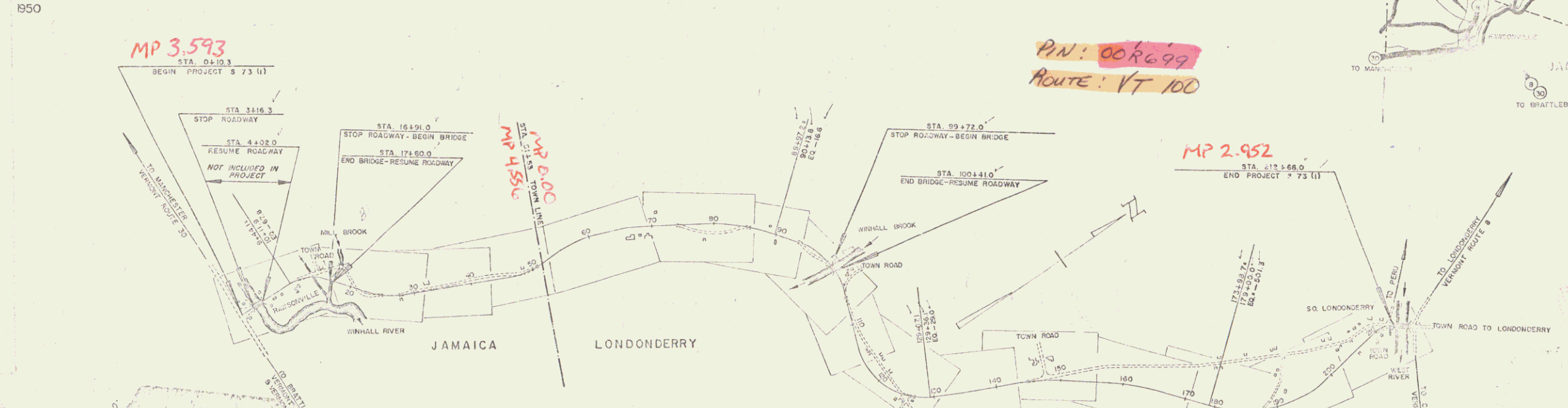
PROJECT NO.	STATE	PROJECT DIST.	SHEET NO.	TOTAL SHEETS
57310	VT	8	1	131



Jamaica 56

PROJECT: JAMAICA-LONDONDERRY
DISTRICT: 8
TOWN: Londonderry
SECTION: 8
SHEET: 1

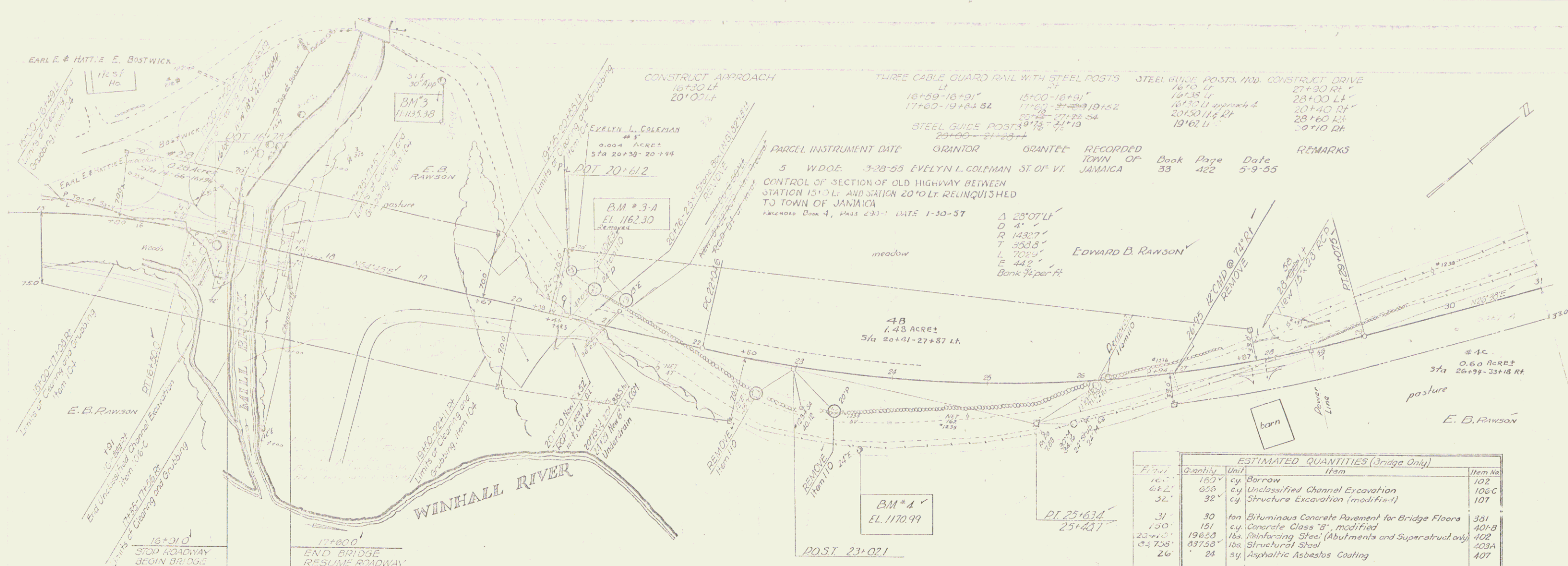
CONTRACTOR: W.H. Horse, Const. & Lumber Co.
YEAR: 1955
LOCATION: Beginning at intersection of route 8 and 10, extending northerly on Rte. 8, 20,555.3 ft.



JAMAICA - LONDONDERRY	TYPE	PAVEMENT AREA
573 (1)	DBL TACK COAT OF P.C. TAR OVER PEASSTONE SEAL	52,310 SQ. YD.

RECORD PLANS MATERIALS

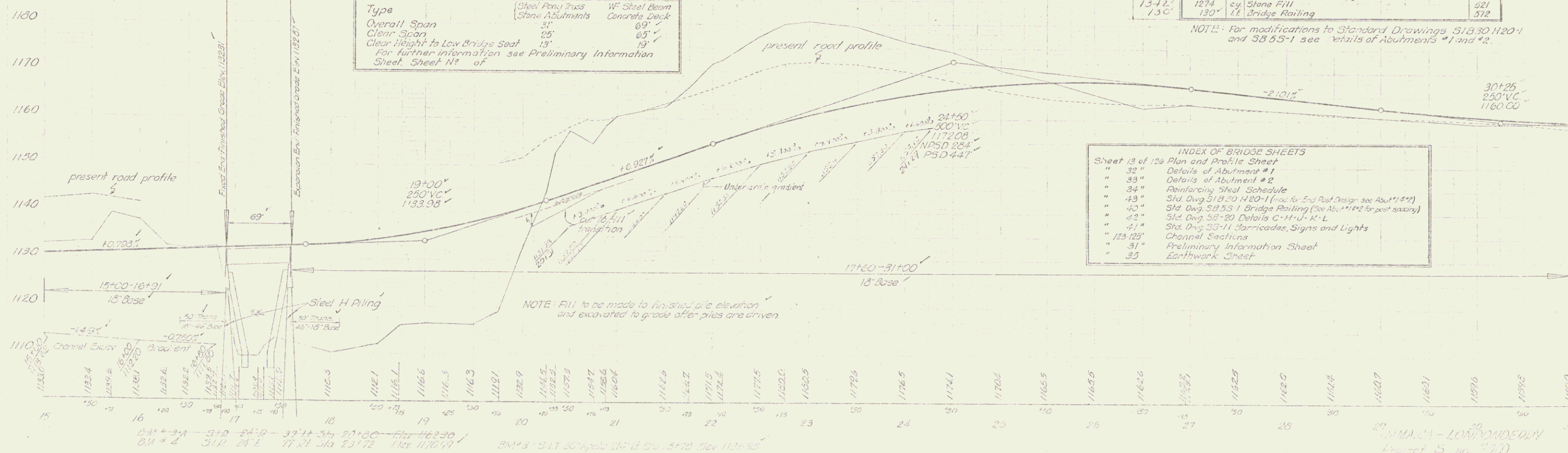
SUB-BASE OF GRAVEL - 4" - 8" - 12" - 18" - 24" - 30" - 36" - 42" - 48" - 54" - 60" - 66" - 72" - 78" - 84" - 90" - 96" - 102" - 108" - 114" - 120" - 126" - 132" - 138" - 144" - 150" - 156" - 162" - 168" - 174" - 180" - 186" - 192" - 198" - 204" - 210" - 216" - 222" - 228" - 234" - 240" - 246" - 252" - 258" - 264" - 270" - 276" - 282" - 288" - 294" - 300"	REINFORCING STEEL - VI Structural Steel Co.
CRUSHED GRAVEL - 3/4" - 1 1/2" - 2" - 2 1/2" - 3" - 3 1/2" - 4" - 4 1/2" - 5" - 5 1/2" - 6" - 6 1/2" - 7" - 7 1/2" - 8" - 8 1/2" - 9" - 9 1/2" - 10" - 10 1/2" - 11" - 11 1/2" - 12" - 12 1/2" - 13" - 13 1/2" - 14" - 14 1/2" - 15" - 15 1/2" - 16" - 16 1/2" - 17" - 17 1/2" - 18" - 18 1/2" - 19" - 19 1/2" - 20" - 20 1/2" - 21" - 21 1/2" - 22" - 22 1/2" - 23" - 23 1/2" - 24" - 24 1/2" - 25" - 25 1/2" - 26" - 26 1/2" - 27" - 27 1/2" - 28" - 28 1/2" - 29" - 29 1/2" - 30" - 30 1/2" - 31" - 31 1/2" - 32" - 32 1/2" - 33" - 33 1/2" - 34" - 34 1/2" - 35" - 35 1/2" - 36" - 36 1/2" - 37" - 37 1/2" - 38" - 38 1/2" - 39" - 39 1/2" - 40" - 40 1/2" - 41" - 41 1/2" - 42" - 42 1/2" - 43" - 43 1/2" - 44" - 44 1/2" - 45" - 45 1/2" - 46" - 46 1/2" - 47" - 47 1/2" - 48" - 48 1/2" - 49" - 49 1/2" - 50" - 50 1/2" - 51" - 51 1/2" - 52" - 52 1/2" - 53" - 53 1/2" - 54" - 54 1/2" - 55" - 55 1/2" - 56" - 56 1/2" - 57" - 57 1/2" - 58" - 58 1/2" - 59" - 59 1/2" - 60" - 60 1/2" - 61" - 61 1/2" - 62" - 62 1/2" - 63" - 63 1/2" - 64" - 64 1/2" - 65" - 65 1/2" - 66" - 66 1/2" - 67" - 67 1/2" - 68" - 68 1/2" - 69" - 69 1/2" - 70" - 70 1/2" - 71" - 71 1/2" - 72" - 72 1/2" - 73" - 73 1/2" - 74" - 74 1/2" - 75" - 75 1/2" - 76" - 76 1/2" - 77" - 77 1/2" - 78" - 78 1/2" - 79" - 79 1/2" - 80" - 80 1/2" - 81" - 81 1/2" - 82" - 82 1/2" - 83" - 83 1/2" - 84" - 84 1/2" - 85" - 85 1/2" - 86" - 86 1/2" - 87" - 87 1/2" - 88" - 88 1/2" - 89" - 89 1/2" - 90" - 90 1/2" - 91" - 91 1/2" - 92" - 92 1/2" - 93" - 93 1/2" - 94" - 94 1/2" - 95" - 95 1/2" - 96" - 96 1/2" - 97" - 97 1/2" - 98" - 98 1/2" - 99" - 99 1/2" - 100" - 100 1/2" - 101" - 101 1/2" - 102" - 102 1/2" - 103" - 103 1/2" - 104" - 104 1/2" - 105" - 105 1/2" - 106" - 106 1/2" - 107" - 107 1/2" - 108" - 108 1/2" - 109" - 109 1/2" - 110" - 110 1/2" - 111" - 111 1/2" - 112" - 112 1/2" - 113" - 113 1/2" - 114" - 114 1/2" - 115" - 115 1/2" - 116" - 116 1/2" - 117" - 117 1/2" - 118" - 118 1/2" - 119" - 119 1/2" - 120" - 120 1/2" - 121" - 121 1/2" - 122" - 122 1/2" - 123" - 123 1/2" - 124" - 124 1/2" - 125" - 125 1/2" - 126" - 126 1/2" - 127" - 127 1/2" - 128" - 128 1/2" - 129" - 129 1/2" - 130" - 130 1/2" - 131" - 131 1/2" - 132" - 132 1/2" - 133" - 133 1/2" - 134" - 134 1/2" - 135" - 135 1/2" - 136" - 136 1/2" - 137" - 137 1/2" - 138" - 138 1/2" - 139" - 139 1/2" - 140" - 140 1/2" - 141" - 141 1/2" - 142" - 142 1/2" - 143" - 143 1/2" - 144" - 144 1/2" - 145" - 145 1/2" - 146" - 146 1/2" - 147" - 147 1/2" - 148" - 148 1/2" - 149" - 149 1/2" - 150" - 150 1/2" - 151" - 151 1/2" - 152" - 152 1/2" - 153" - 153 1/2" - 154" - 154 1/2" - 155" - 155 1/2" - 156" - 156 1/2" - 157" - 157 1/2" - 158" - 158 1/2" - 159" - 159 1/2" - 160" - 160 1/2" - 161" - 161 1/2" - 162" - 162 1/2" - 163" - 163 1/2" - 164" - 164 1/2" - 165" - 165 1/2" - 166" - 166 1/2" - 167" - 167 1/2" - 168" - 168 1/2" - 169" - 169 1/2" - 170" - 170 1/2" - 171" - 171 1/2" - 172" - 172 1/2" - 173" - 173 1/2" - 174" - 174 1/2" - 175" - 175 1/2" - 176" - 176 1/2" - 177" - 177 1/2" - 178" - 178 1/2" - 179" - 179 1/2" - 180" - 180 1/2" - 181" - 181 1/2" - 182" - 182 1/2" - 183" - 183 1/2" - 184" - 184 1/2" - 185" - 185 1/2" - 186" - 186 1/2" - 187" - 187 1/2" - 188" - 188 1/2" - 189" - 189 1/2" - 190" - 190 1/2" - 191" - 191 1/2" - 192" - 192 1/2" - 193" - 193 1/2" - 194" - 194 1/2" - 195" - 195 1/2" - 196" - 196 1/2" - 197" - 197 1/2" - 198" - 198 1/2" - 199" - 199 1/2" - 200" - 200 1/2" - 201" - 201 1/2" - 202" - 202 1/2" - 203" - 203 1/2" - 204" - 204 1/2" - 205" - 205 1/2" - 206" - 206 1/2" - 207" - 207 1/2" - 208" - 208 1/2" - 209" - 209 1/2" - 210" - 210 1/2" - 211" - 211 1/2" - 212" - 212 1/2" - 213" - 213 1/2" - 214" - 214 1/2" - 215" - 215 1/2" - 216" - 216 1/2" - 217" - 217 1/2" - 218" - 218 1/2" - 219" - 219 1/2" - 220" - 220 1/2" - 221" - 221 1/2" - 222" - 222 1/2" - 223" - 223 1/2" - 224" - 224 1/2" - 225" - 225 1/2" - 226" - 226 1/2" - 227" - 227 1/2" - 228" - 228 1/2" - 229" - 229 1/2" - 230" - 230 1/2" - 231" - 231 1/2" - 232" - 232 1/2" - 233" - 233 1/2" - 234" - 234 1/2" - 235" - 235 1/2" - 236" - 236 1/2" - 237" - 237 1/2" - 238" - 238 1/2" - 239" - 239 1/2" - 240" - 240 1/2" - 241" - 241 1/2" - 242" - 242 1/2" - 243" - 243 1/2" - 244" - 244 1/2" - 245" - 245 1/2" - 246" - 246 1/2" - 247" - 247 1/2" - 248" - 248 1/2" - 249" - 249 1/2" - 250" - 250 1/2" - 251" - 251 1/2" - 252" - 252 1/2" - 253" - 253 1/2" - 254" - 254 1/2" - 255" - 255 1/2" - 256" - 256 1/2" - 257" - 257 1/2" - 258" - 258 1/2" - 259" - 259 1/2" - 260" - 260 1/2" - 261" - 261 1/2" - 262" - 262 1/2" - 263" - 263 1/2" - 264" - 264 1/2" - 265" - 265 1/2" - 266" - 266 1/2" - 267" - 267 1/2" - 268" - 268 1/2" - 269" - 269 1/2" - 270" - 270 1/2" - 271" - 271 1/2" - 272" - 272 1/2" - 273" - 273 1/2" - 274" - 274 1/2" - 275" - 275 1/2" - 276" - 276 1/2" - 277" - 277 1/2" - 278" - 278 1/2" - 279" - 279 1/2" - 280" - 280 1/2" - 281" - 281 1/2" - 282" - 282 1/2" - 283" - 283 1/2" - 284" - 284 1/2" - 285" - 285 1/2" - 286" - 286 1/2" - 287" - 287 1/2" - 288" - 288 1/2" - 289" - 289 1/2" - 290" - 290 1/2" - 291" - 291 1/2" - 292" - 292 1/2" - 293" - 293 1/2" - 294" - 294 1/2" - 295" - 295 1/2" - 296" - 296 1/2" - 297" - 297 1/2" - 298" - 298 1/2" - 299" - 299 1/2" - 300" - 300 1/2" - 301" - 301 1/2" - 302" - 302 1/2" - 303" - 303 1/2" - 304" - 304 1/2" - 305" - 305 1/2" - 306" - 306 1/2" - 307" - 307 1/2" - 308" - 308 1/2" - 309" - 309 1/2" - 310" - 310 1/2" - 311" - 311 1/2" - 312" - 312 1/2" - 313" - 313 1/2" - 314" - 314 1/2" - 315" - 315 1/2" - 316" - 316 1/2" - 317" - 317 1/2" - 318" - 318 1/2" - 319" - 319 1/2" - 320" - 320 1/2" - 321" - 321 1/2" - 322" - 322 1/2" - 323" - 323 1/2" - 324" - 324 1/2" - 325" - 325 1/2" - 326" - 326 1/2" - 327" - 327 1/2" - 328" - 328 1/2" - 329" - 329 1/2" - 330" - 330 1/2" - 331" - 331 1/2" - 332" - 332 1/2" - 333" - 333 1/2" - 334" - 334 1/2" - 335" - 335 1/2" - 336" - 336 1/2" - 337" - 337 1/2" - 338" - 338 1/2" - 339" - 339 1/2" - 340" - 340 1/2" - 341" - 341 1/2" - 342" - 342 1/2" - 343" - 343 1/2" - 344" - 344 1/2" - 345" - 345 1/2" - 346" - 346 1/2" - 347" - 347 1/2" - 348" - 348 1/2" - 349" - 349 1/2" - 350" - 350 1/2" - 351" - 351 1/2" - 352" - 352 1/2" - 353" - 353 1/2" - 354" - 354 1/2" - 355" - 355 1/2" - 356" - 356 1/2" - 357" - 357 1/2" - 358" - 358 1/2" - 359" - 359 1/2" - 360" - 360 1/2" - 361" - 361 1/2" - 362" - 362 1/2" - 363" - 363 1/2" - 364" - 364 1/2" - 365" - 365 1/2" - 366" - 366 1/2" - 367" - 367 1/2" - 368" - 368 1/2" - 369" - 369 1/2" - 370" - 370 1/2" - 371" - 371 1/2" - 372" - 372 1/2" - 373" - 373 1/2" - 374" - 374 1/2" - 375" - 375 1/2" - 376" - 376 1/2" - 377" - 377 1/2" - 378" - 378 1/2" - 379" - 379 1/2" - 380" - 380 1/2" - 381" - 381 1/2" - 382" - 382 1/2" - 383" - 383 1/2" - 384" - 384 1/2" - 385" - 385 1/2" - 386" - 386 1/2" - 387" - 387 1/2" - 388" - 388 1/2" - 389" - 389 1/2" - 390" - 390 1/2" - 391" - 391 1/2" - 392" - 392 1/2" - 393" - 393 1/2" - 394" - 394 1/2" - 395" - 395 1/2" - 396" - 396 1/2" - 397" - 397 1/2" - 398" - 398 1/2" - 399" - 399 1/2" - 400" - 400 1/2" - 401" - 401 1/2" - 402" - 402 1/2" - 403" - 403 1/2" - 404" - 404 1/2" - 405" - 405 1/2" - 406" - 406 1/2" - 407" - 407 1/2" - 408" - 408 1/2" - 409" - 409 1/2" - 410" - 410 1/2" - 411" - 411 1/2" - 412" - 412 1/2" - 413" - 413 1/2" - 414" - 414 1/2" - 415" - 415 1/2" - 416" - 416 1/2" - 417" - 417 1/2" - 418" - 418 1/2" - 419" - 419 1/2" - 420" - 420 1/2" - 421" - 421 1/2" - 422" - 422 1/2" - 423" - 423 1/2" - 424" - 424 1/2" - 425" - 425 1/2" - 426" - 426 1/2" - 427" - 427 1/2" - 428" - 428 1/2" - 429" - 429 1/2" - 430" - 430 1/2" - 431" - 431 1/2" - 432" - 432 1/2" - 433" - 433 1/2" - 434" - 434 1/2" - 435" - 435 1/2" - 436" - 436 1/2" - 437" - 437 1/2" - 438" - 438 1/2" - 439" - 439 1/2" - 440" - 440 1/2" - 441" - 441 1/2" - 442" - 442 1/2" - 443" - 443 1/2" - 444" - 444 1/2" - 445" - 445 1/2" - 446" - 446 1/2" - 447" - 447 1/2" - 448" - 448 1/2" - 449" - 449 1/2" - 450" - 450 1/2" - 451" - 451 1/2" - 452" - 452 1/2" - 453" - 453 1/2" - 454" - 454 1/2" - 455" - 455 1/2" - 456" - 456 1/2" - 457" - 457 1/2" - 458" - 458 1/2" - 459" - 459 1/2" - 460" - 460 1/2" - 461" - 461 1/2" - 462" - 462 1/2" - 463" - 463 1/2" - 464" - 464 1/2" - 465" - 465 1/2" - 466" - 466 1/2" - 467" - 467 1/2" - 468" - 468 1/2" - 469" - 469 1/2" - 470" - 470 1/2" - 471" - 471 1/2" - 472" - 472 1/2" - 473" - 473 1/2" - 474" - 474 1/2" - 475" - 475 1/2" - 476" - 476 1/2" - 477" - 477 1/2" - 478" - 478 1/2" - 479" - 479 1/2" - 480" - 480 1/2" - 481" - 481 1/2" - 482" - 482 1/2" - 483" - 483 1/2" - 484" - 484 1/2" - 485" - 485 1/2" - 486" - 486 1/2" - 487" - 487 1/2" - 488" - 488 1/2" - 489" - 489 1/2" - 490" - 490 1/2" - 491" - 491 1/2" - 492" - 492 1/2" - 493" - 493 1/2" - 494" - 494 1/2" - 495" - 495 1/2" - 496" - 496 1/2" - 497" - 497 1/2" - 498" - 498 1/2" - 499" - 499 1/2" - 500" - 500 1/2" - 501" - 501 1/2" - 502" - 502 1/2" - 503" - 503 1/2" - 504" - 504 1/2" - 505" - 505 1/2" - 506" - 506 1/2" - 507" - 507 1/2" - 508" - 508 1/2" - 509" - 509 1/2" - 510" - 510 1/2" - 511" - 511 1/2" - 512" - 512 1/2" - 513" - 513 1/2" - 514" - 514 1/2" - 515" - 515 1/2" - 516" - 516 1/2" - 517" - 517 1/2" - 518" - 518 1/2" - 519" - 519 1/2" - 520" - 520 1/2" - 521" - 521 1/2" - 522" - 522 1/2" - 523" - 523 1/2" - 524" - 524 1/2" - 525" - 525 1/2" - 526" - 526 1/2" - 527" - 527 1/2" - 528" - 528 1/2" - 529" - 529 1/2" - 530" - 530 1/2" - 531" - 531 1/2" - 532" - 532 1/2" - 533" - 533 1/2" - 534" - 534 1/2" - 535" - 535 1/2" - 536" - 536 1/2" - 537" - 537 1/2" - 538" - 538 1/2" - 539" - 539 1/2" - 540" - 540 1/2" - 541" - 541 1/2" - 542" - 542 1/2" - 543" - 543 1/2" - 544" - 544 1/2" - 545" - 545 1/2" - 546" - 546 1/2" - 547" - 547 1/2" - 548" - 548 1/2" - 549" - 549 1/2" - 550" - 550 1/2" - 551" - 551 1/2" - 552" - 552 1/2" - 553" - 553 1/2" - 554" - 554 1/2" - 555" - 555 1/2" - 556" - 556 1/2" - 557" - 557 1/2" - 558" - 558 1/2" - 559" - 559 1/2" - 560" - 560 1/2" - 561" - 561 1/2" - 562" - 562 1/2" - 563" - 563 1/2" - 564" - 564 1/2" - 565" - 565 1/2" - 566" - 566 1/2" - 567" - 567 1/2" - 568" - 568 1/2" - 569" - 569 1/2" - 570" - 570 1/2" - 571" - 571 1/2" - 572" - 572 1/2" - 573" - 573 1/2" - 574" - 574 1/2" - 575" - 575 1/2" - 576" - 576 1/2" - 577" - 577 1/2" - 578" - 578 1/2" - 579" - 579 1/2" - 580" - 580 1/2" - 581" - 581 1/2" - 582" - 582 1/2" - 583" - 583 1/2" - 584" - 584 1/2" - 585" - 585 1/2" - 586" - 586 1/2" - 587" - 587 1/2" - 588" - 588 1/2" - 589" - 589 1/2" - 590" - 590 1/2" - 591" - 591 1/2" - 592" - 592 1/2" - 593" - 593 1/2" - 594" - 594 1/2" - 595" - 595 1/2" - 596" - 596 1/2" - 597" - 597 1/2" - 598" - 598 1/2" - 599" - 599 1/2" - 600" - 600 1/2" - 601" - 601 1/2" - 602" - 602 1/2" - 603" - 603 1/2" - 604" - 604 1/2" - 605" - 605 1/2" - 606" - 606 1/2" - 607" - 607 1/2" - 608" - 608 1/2" - 609" - 609 1/2" - 610" - 610 1/2" - 611" - 611 1/2" - 612" - 612 1/2" - 613" - 613 1/2" - 614" - 614 1/2" - 615" - 615 1/2" - 616" - 616 1/2" - 617" - 617 1/2" - 618" - 618 1/2" - 619" - 619 1/2" - 620" - 620 1/2" - 621" - 621 1/2" - 622" - 622 1/2" - 623" - 623 1/2" - 624" - 624 1/2" - 625" - 625 1/2" - 626" - 626 1/2" - 6	



BRIDGE DATA		
	PRESENT	PROMISED
Type	Steel Pony Truss	W Steel Beam
Overall Span	Stone Abutments	Concrete Deck
Clear Span	31'	65'
Clear Height to Low Bridge Seat	13'	19'

For further information see Preliminary Information Sheet, Sheet No. of _____

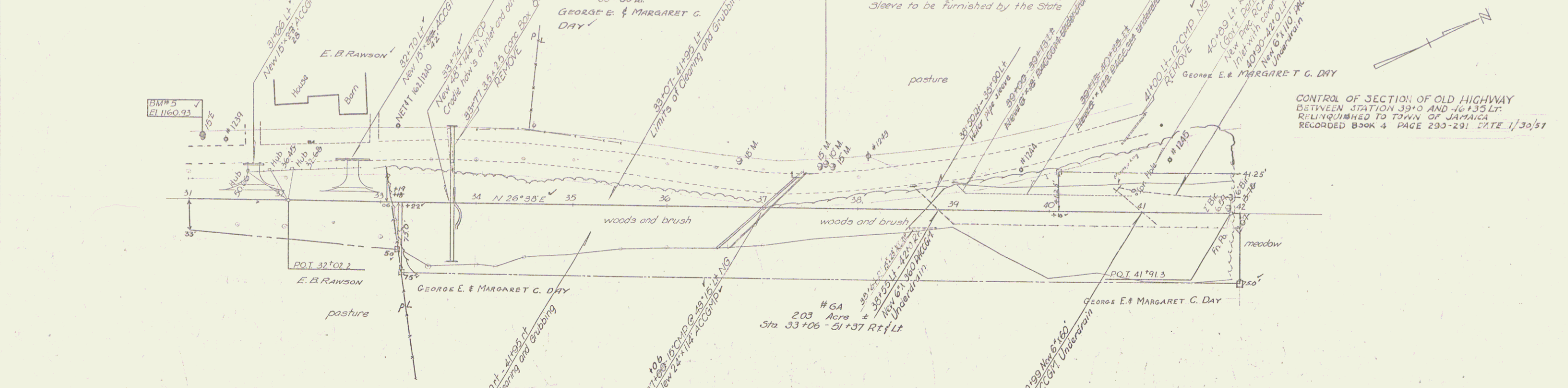
ESTIMATED QUANTITIES (Bridge Only)			
Quantity	Unit	Item	Item No.
1600	cy	Borrow	102
642	cy	Unclassified Channel Excavation	106C
32	cy	Structure Excavation (modified)	107
30	ton	Bituminous Concrete Pavement for Bridge Floors	351
150	cy	Concrete Class "B", modified	401-B
23,000	lbs.	Reinforcing Steel (Abutments and Superstructure)	402
8,700	lbs.	Structural Steel	403A
26	sq.	Asphaltic Asbestos Coating	407
1	1	Furnishing Equipment for Driving Piles	501
348	lf.	Steel Piling	504
135	lf.	Cutoffs for Steel Piling	504-1
134	cy	Stone Filling	521
130	lf.	Bridge Railing	572



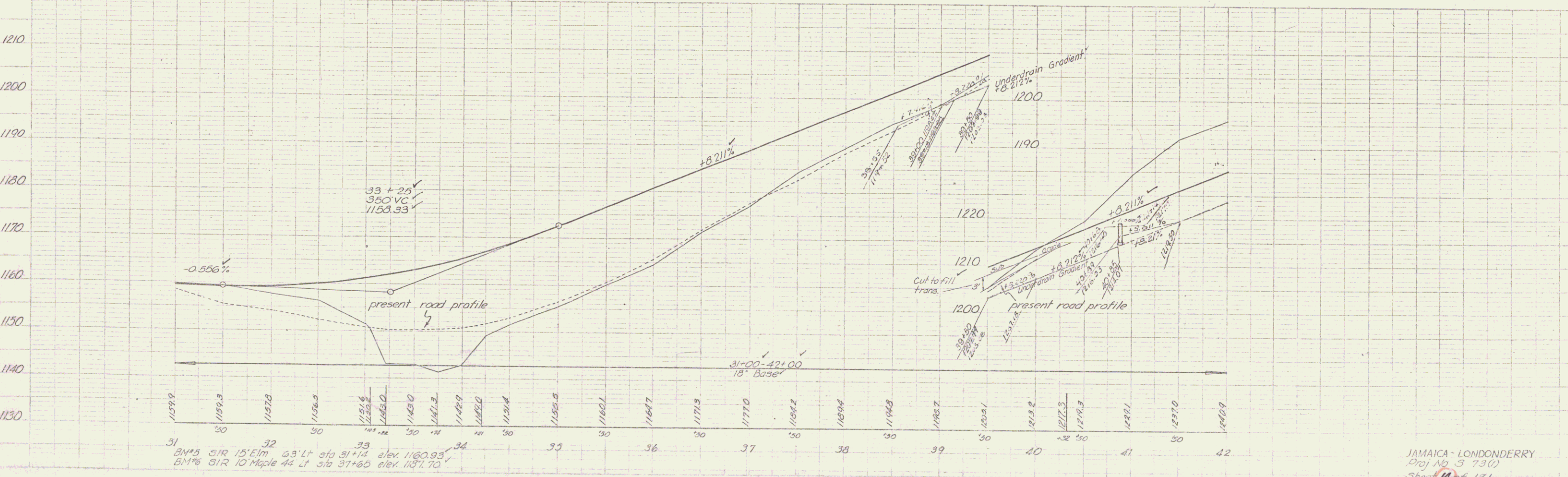
INDEX OF BRIDGE SHEETS	
Sheet 13 of 12s Plan and Profile Sheet	
" 32 "	Details of Abutment #1
" 33 "	Details of Abutment #2
" 34 "	Reinforcing Steel Schedule
" 43 "	Std. Dwg. 51330 H20-1 (mod. for End Post Design see Abut #1 & 2)
" 40 "	Std. Dwg. 51331 Bridge Railing (see Abut #1 & 2 for post spacing)
" 42 "	Std. Dwg. 51320 Details C-14'-14" L-L
" 41 "	Std. Dwg. 51311 Barricades, Signs and Lights
" 123-125 "	Channel Sections
" 31 "	Preliminary Information Sheet
" 35 "	Earthwork Sheet

24+3-24 31.0 24+0 37.14 57 20+00 Elev. 1162.30
 24+4 31.0 24+0 37.14 57 20+00 Elev. 1170.99
 BM # 3-A 1162.30
 BM # 4 1170.99
 JAMAICA - LONGMEADOW
 Project S No. 7301
 Sheet 13 of 131

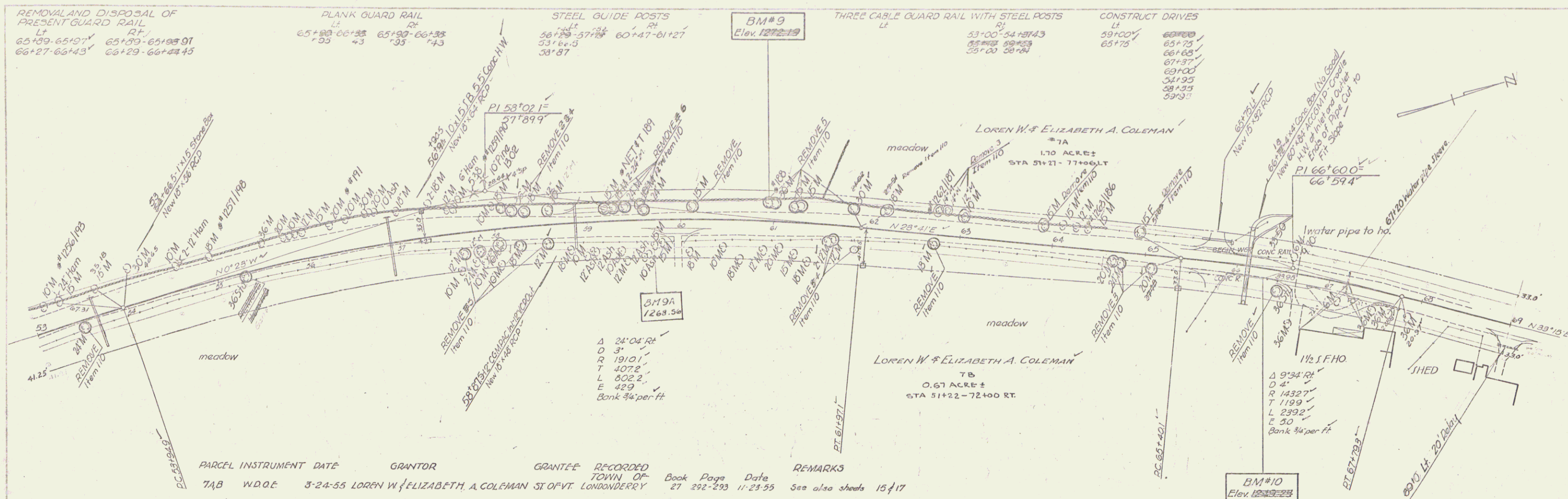
THREE CABLE GUARD RAIL WITH STEEL POSTS
 LT 33+00 - 33+78
 RT 32+65 - 33+151



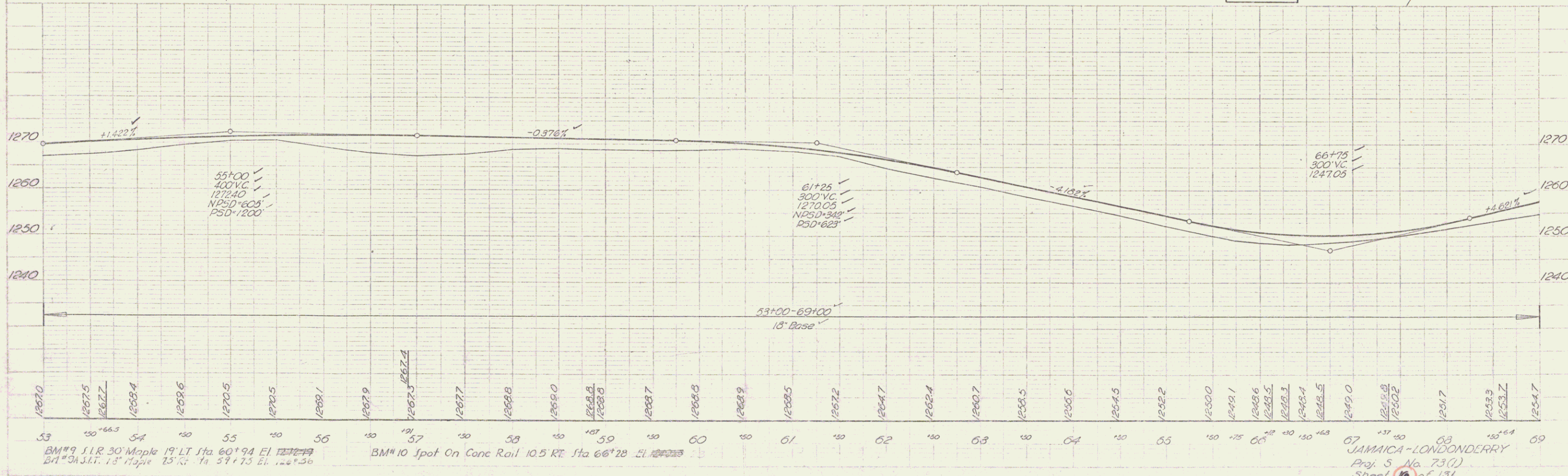
PARCEL INSTRUMENT DATE	GRANTOR	GRANTEE	RECORDED TOWN OF JAMAICA	Book	Page	Date	REMARKS
6AB W.D.	3-24-55	GEORGE E. & MARGARET G. DAY	ST. OF VT.	JAMAICA	33	522-523	11-23-55 See also Sheet 15



JAMAICA - LONDONDERRY
 Proj No. 3 73(1)
 Sheet 14 of 131

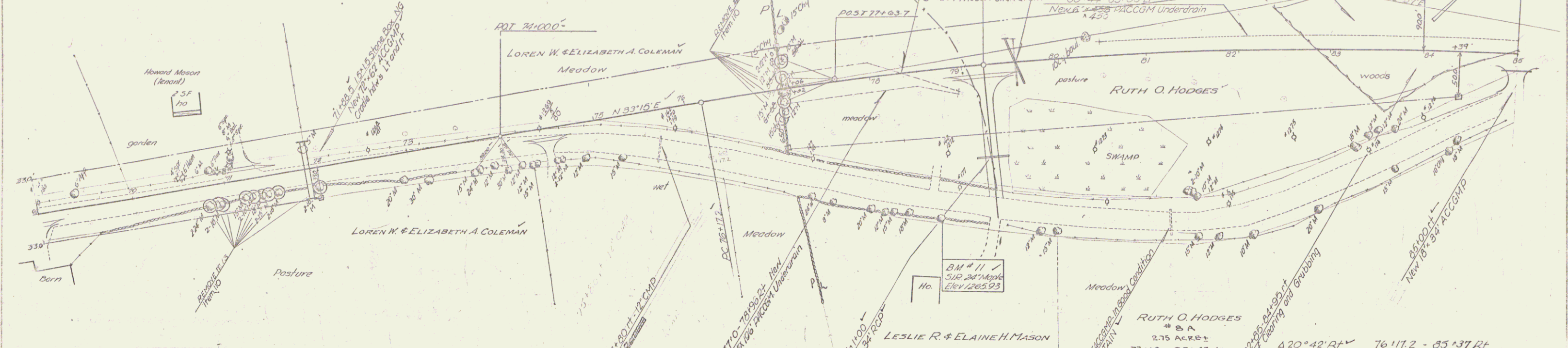


PARCEL	INSTRUMENT	DATE	GRANTOR	GRANTEE	RECORDED TOWN OF	BOOK	PAGE	DATE	REMARKS
7AB	W.D.O.E.	3-24-55	LOREN W. & ELIZABETH A. COLEMAN	SI OF VT	LONDONDERRY	27	292-293	11-23-55	See also sheets 15 & 17

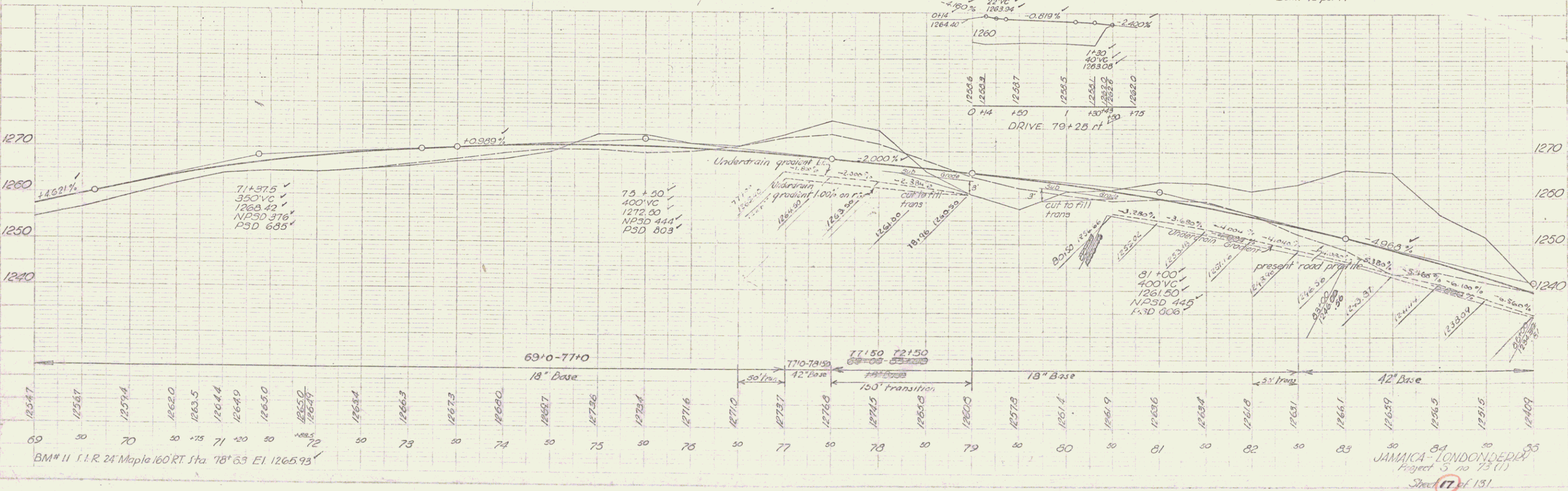


BM#9 51R 30' Maple 19' LT Sta 60+94 El. 1272.19
 BM#10 Spot On Conc Rail 10.5 RT Sta 66+28 El. 1272.23
 JAMMICA-LONDONDERRY
 Proj. 5 No. 73(1)
 Sheet 16 of 131

STEEL GUIDE POSTS 16%	THREE CABLE GUARD RAIL	PLANK GUARD RAIL	CONSTRUCT DRIVES
LT	RT	LT	RT
7125-72153 Rt	71125-72153 Rt	71163-72124 Lt	71120
79120	78196	79120	74120
79140-79156-2	79120	79140	79125
8410	79140	8410	78150
84125	8410		85100 (to proposed picnic area)



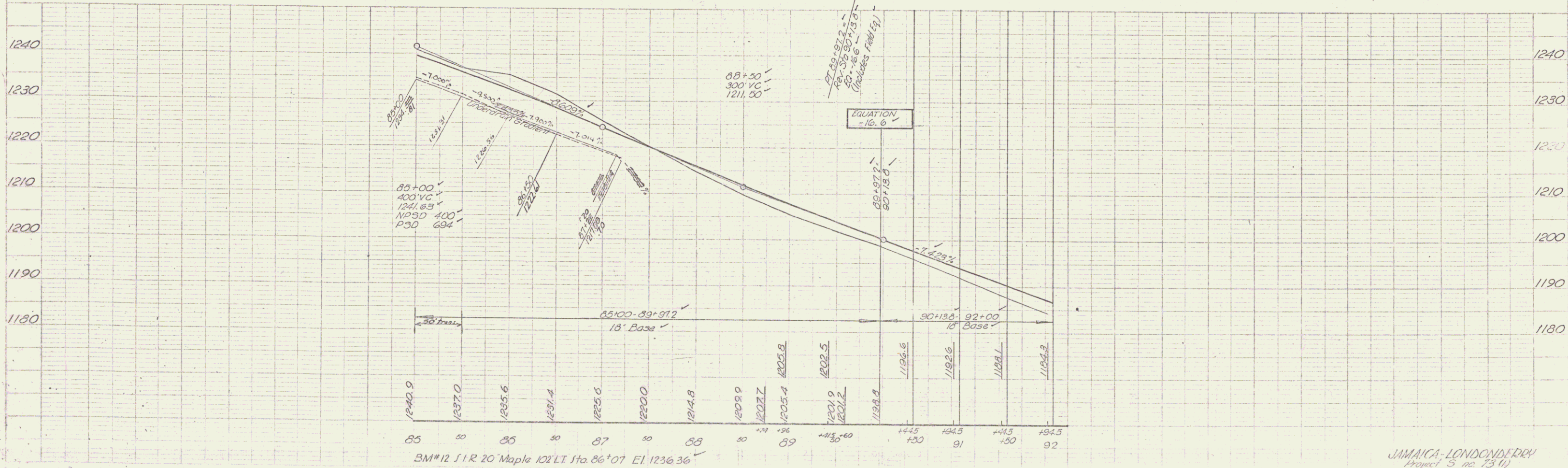
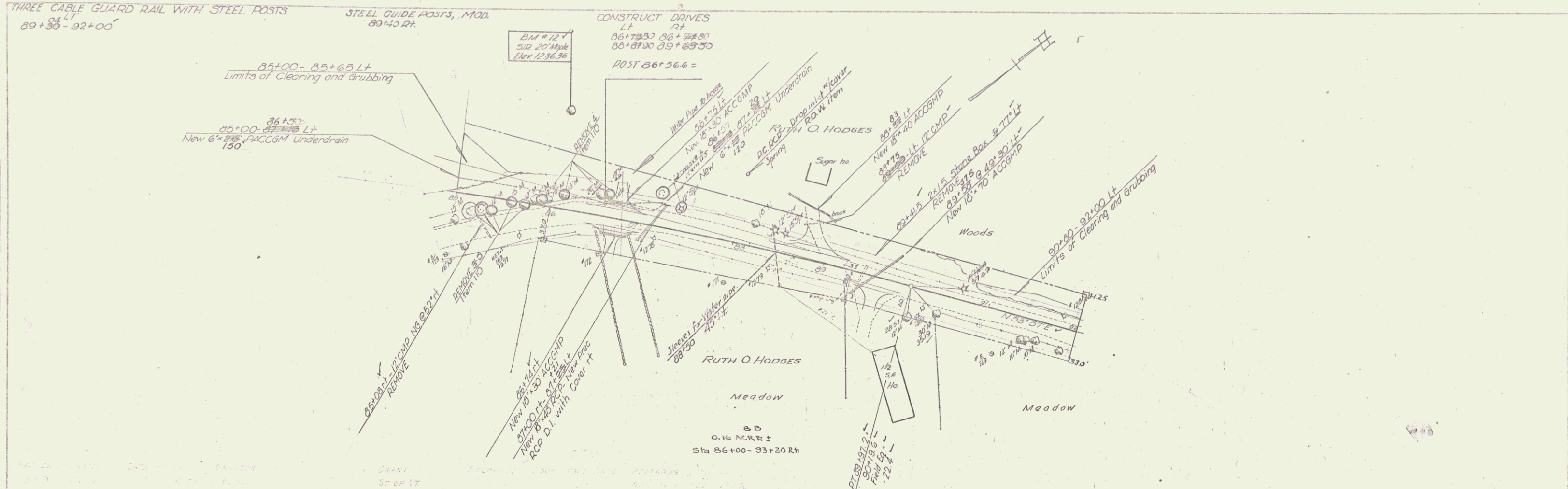
PARCEL INSTRUMENT	DATE	GRANTOR	GRANTEE	RECORDED TOWN OF LONDONDERRY	Book	Page	Date	REMARKS
84B	W.D.C.	3-24-55	RUTH O. HODGES	ST. OF VT.	27	294	11-23-55	See also sheets 18 & 19

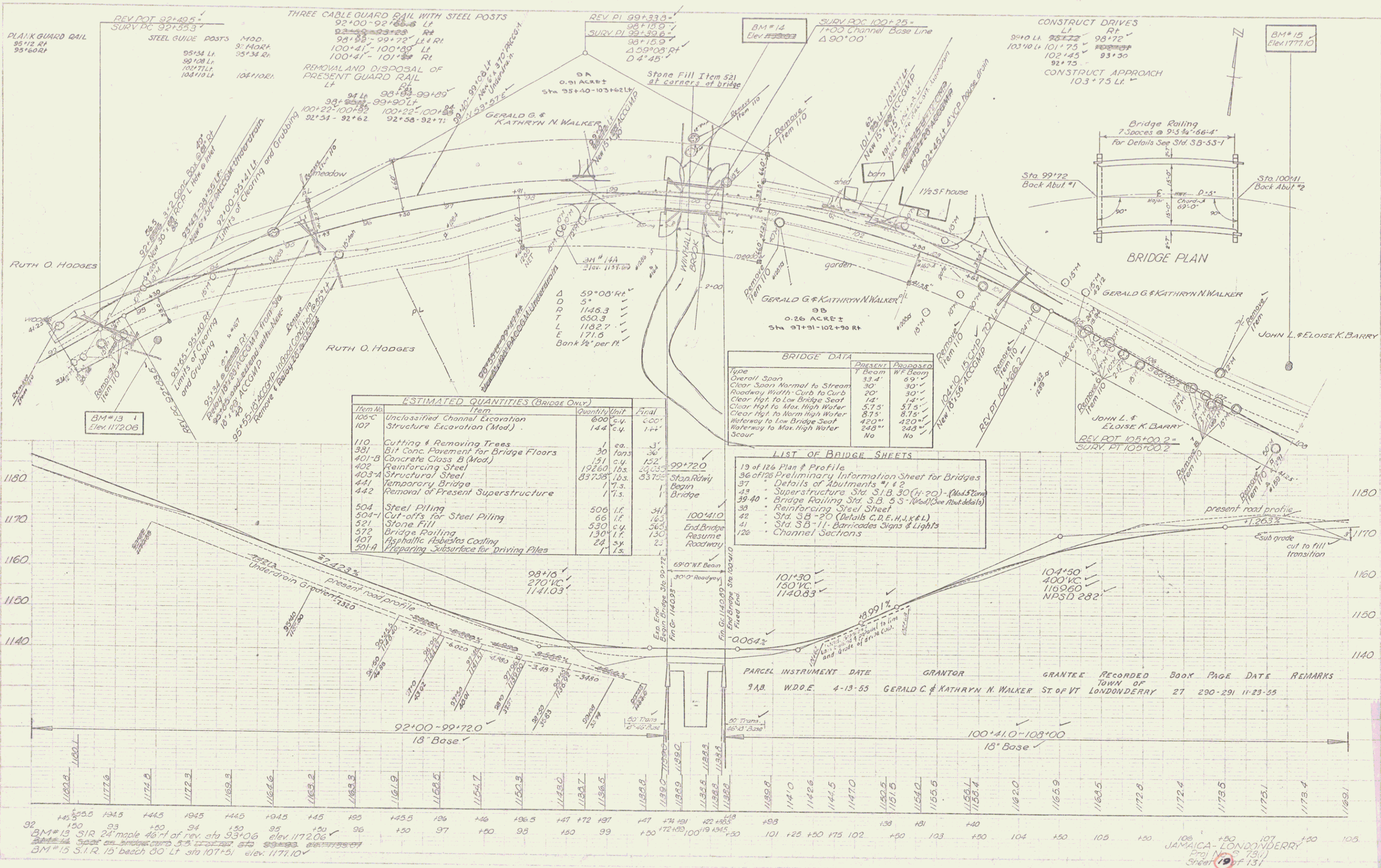


JAMAICA - LONDONDERRY
Project 5 no 73 (1)
Sheet 17 of 131

DATE	1/27
BY	AD
CHECKED	
SCALE	
PROJECT	
NO.	
SHEET	
TOTAL SHEETS	

DATE	
BY	
CHECKED	
SCALE	
PROJECT	
NO.	
SHEET	
TOTAL SHEETS	

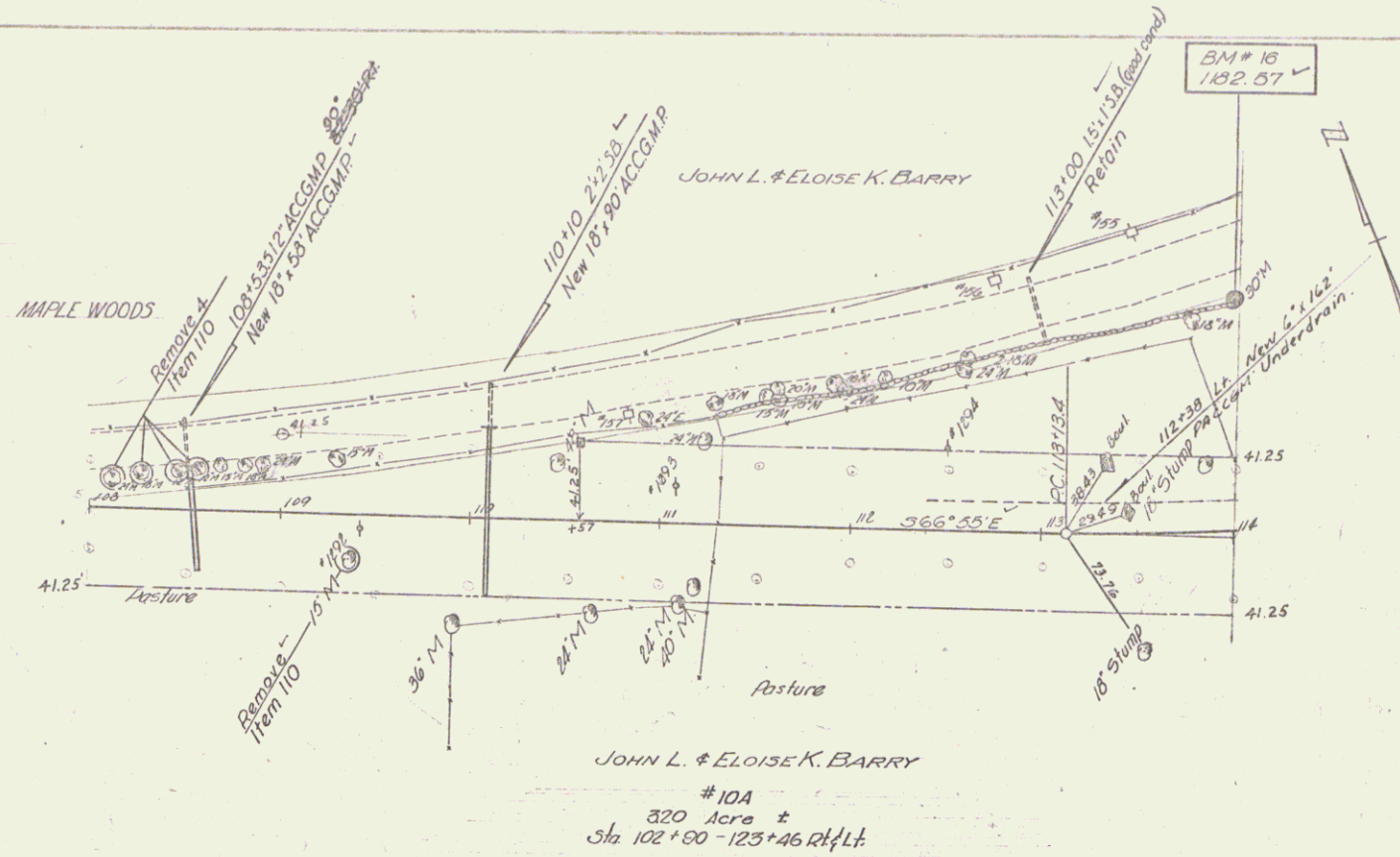




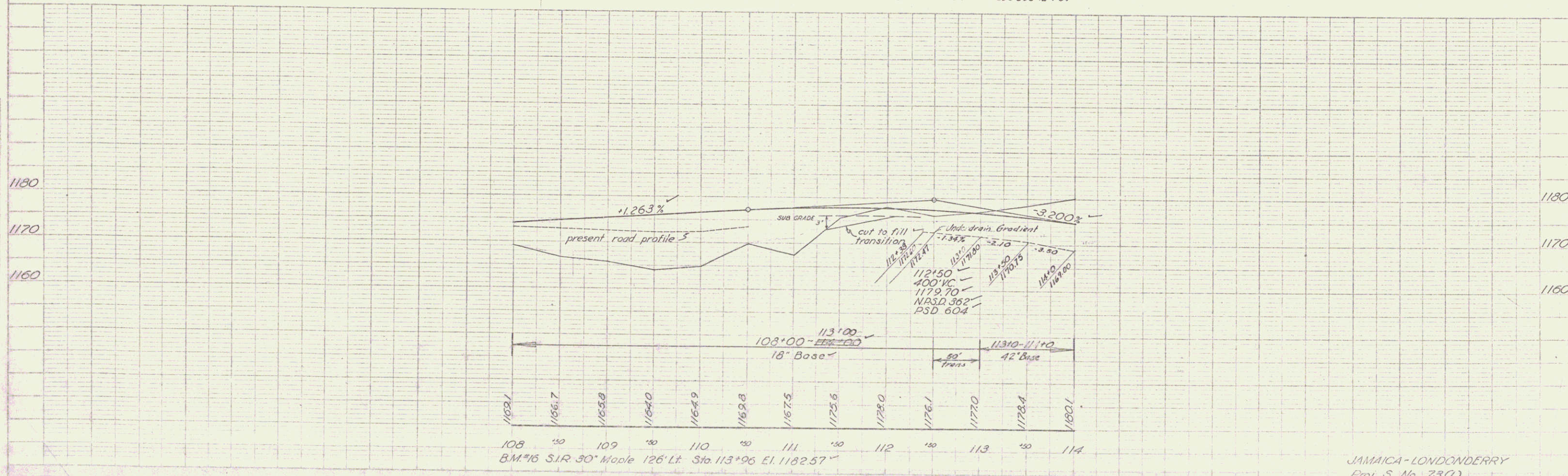
STEEL GUIDE POSTS SPACED 16' c/c
 103+25 - 111+77 RL
 108+33 Lt.
 110+10 Lt.

PLANK GUARD RAIL
 108+30 Lt
 110+30 Lt.

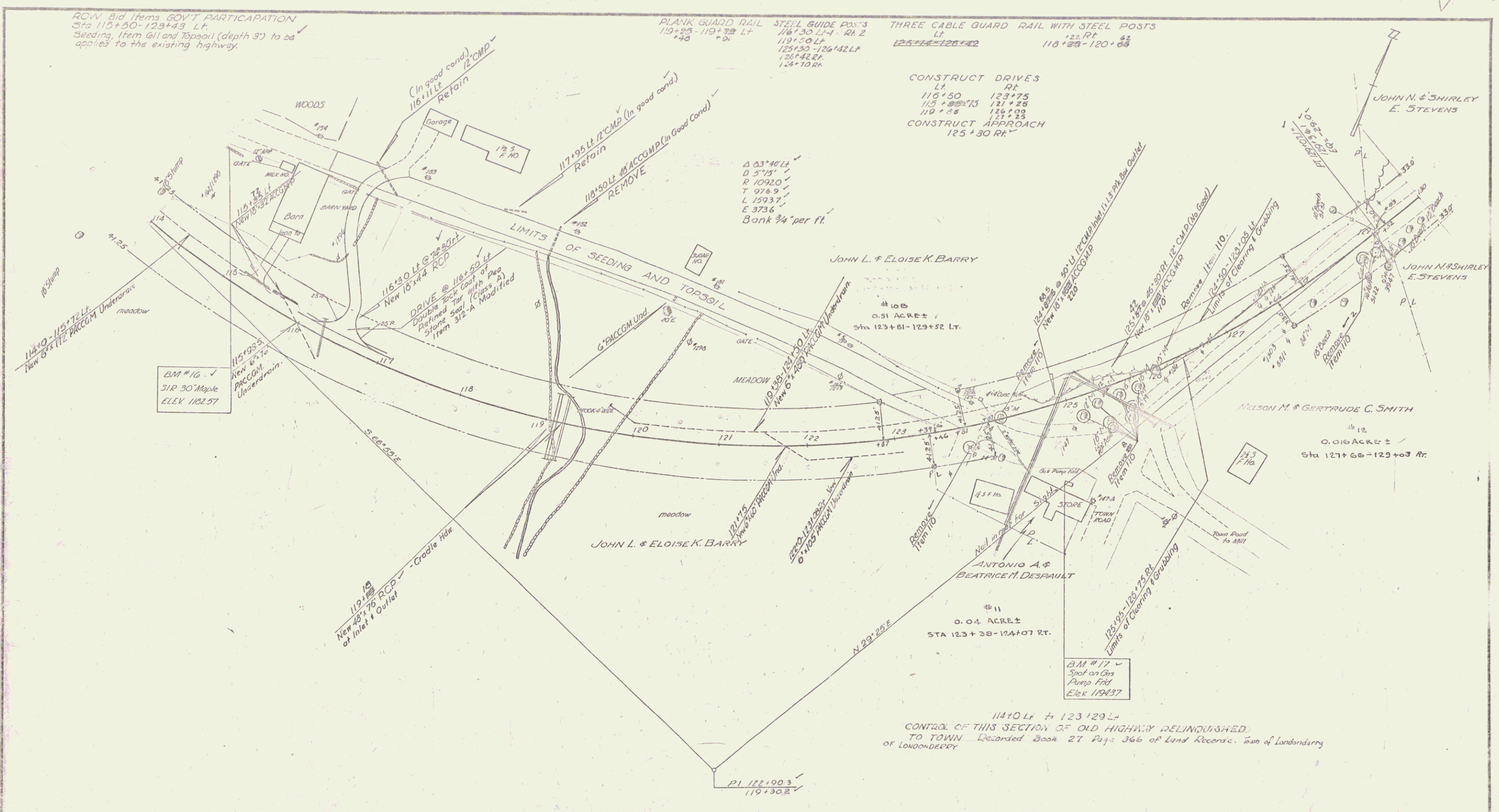
109+01 - 114+0 LI
 CONTROL OF OLD HIGHWAY BETWEEN THESE STATIONS
 RELINQUISHED TO TOWN - Recorded Book 27 Page 366
 of Land Records of town of Londonderry



PARCEL	INSTR	DATE	GRANTOR	GRANTEE	RECORDED BOOK	PAGE	DATE	REMARKS
10A,B	COND.	12-3-54	JOHN L. & ELOISE K. BARRY	ST OF VT	LONDONDERRY 27	236-238	12-1-54	



JAMAICA - LONDONDERRY
 Proj. S. No. 73(1)
 Sheet 20 of 131



ROW Bid Items GOV'T PARTICIPATION
Sta 115+50-123+43 LT.
Seeding, Item G11 and Topsoil (depth 3") to be applied to the existing highway.

PLANK GUARD RAIL
119+25 - 119+72 LT
+40 +0

STEEL GUIDE POSTS
118+30 LT - RA 2
119+00 LT
125+30 - 126+42 LT
126+42 RT
124+70 RT

THREE CABLE GUARD RAIL WITH STEEL POSTS
LT
125+54 - 126+42
RT
118+25 - 120+00

CONSTRUCT DRIVES
LT
116+50 123+75
115+85 121+25
119+85 124+00
RT
121+25
124+00

CONSTRUCT APPROACH
125+30 RT

Δ 63°46' L
D 5'15"
R 10920'
T 976.9'
L 1593.7'
E 373.6'
Bank ¾" per ft.

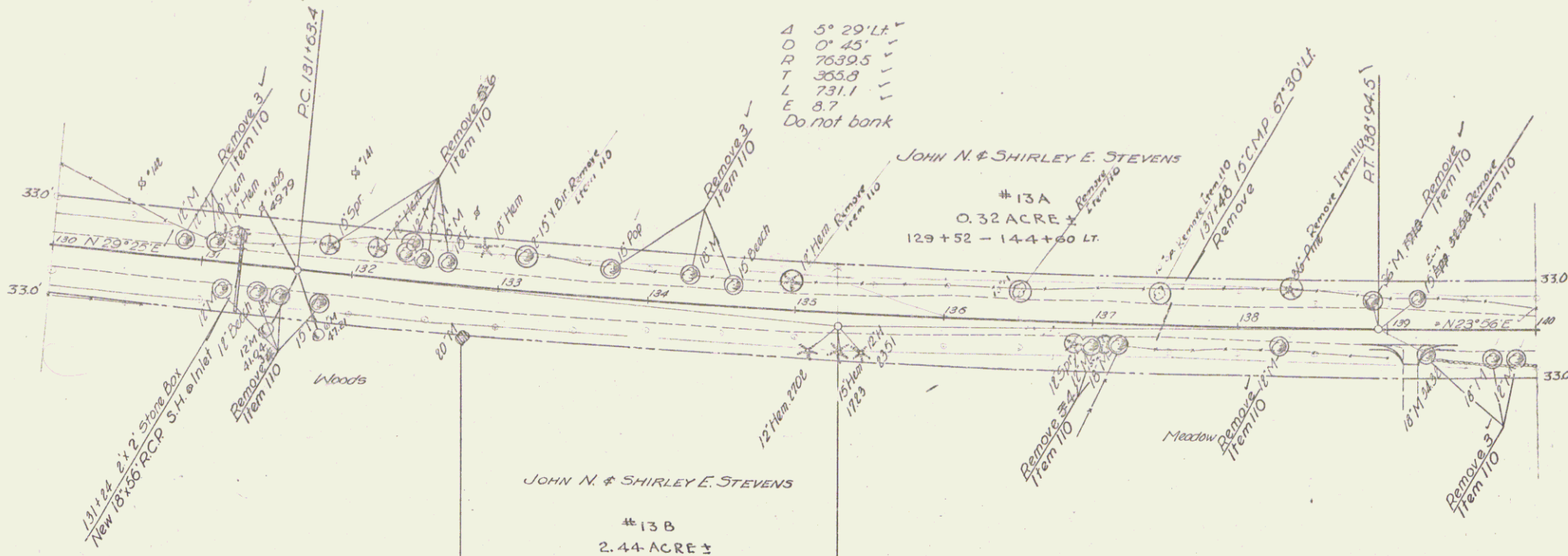
PARCEL	INSTRUMENT	DATE	GRANTOR	GRANTEE	RECORDED	BOOK	PAGE	DATE	REMARKS
11	W.D.D.E.	3-24-55	ANTONIO A & BEATRICE M. DESPAULT	ST OF VT	TOWN OF LONDONDERRY	27	252	4-20-55	
12	W.D.D.E.	3-24-55	NELSON M. & GERTRUDE C. SMITH	ST OF VT	LONDONDERRY	27	253	4-20-55	

JAMAICA - LONDONDERRY

Surveyed by: Pagar
Designed by: AJO
Drawn by: AJO
Traced by:
Checked by:
Scale: 5' = 1" (1)
Sheet: 2 of 157 Sheets

STEEL GUIDE POSTS SPACED 16' ±
 LA 131+25
 RA 131+29+133+69
 130+90-133+14

CONSTRUCT DRIVE
 132+50
 131+0 54
 135+00 41



5° 29' 14"
 D 7639.5
 T 355.8
 L 731.1
 E 8.7
 Do not bank

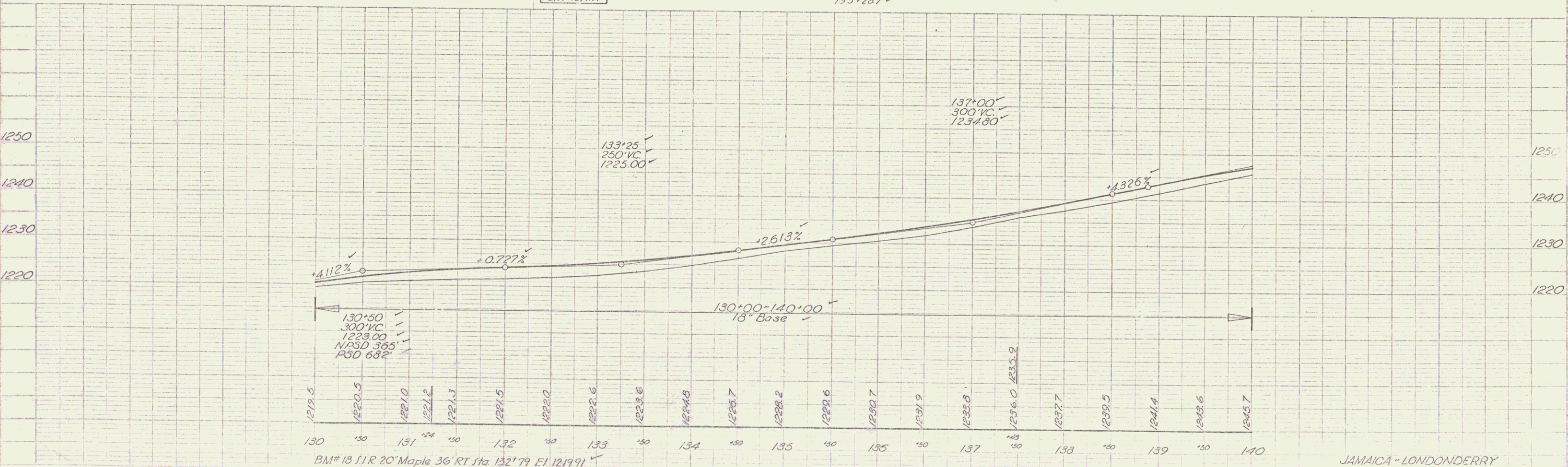
JOHN N. & SHIRLEY E. STEVENS
 #13A
 0.32 ACRE ±
 129+52 - 144+60 LT

JOHN N. & SHIRLEY E. STEVENS
 #13B
 2.44 ACRE ±
 129+00 - 155+42 RT

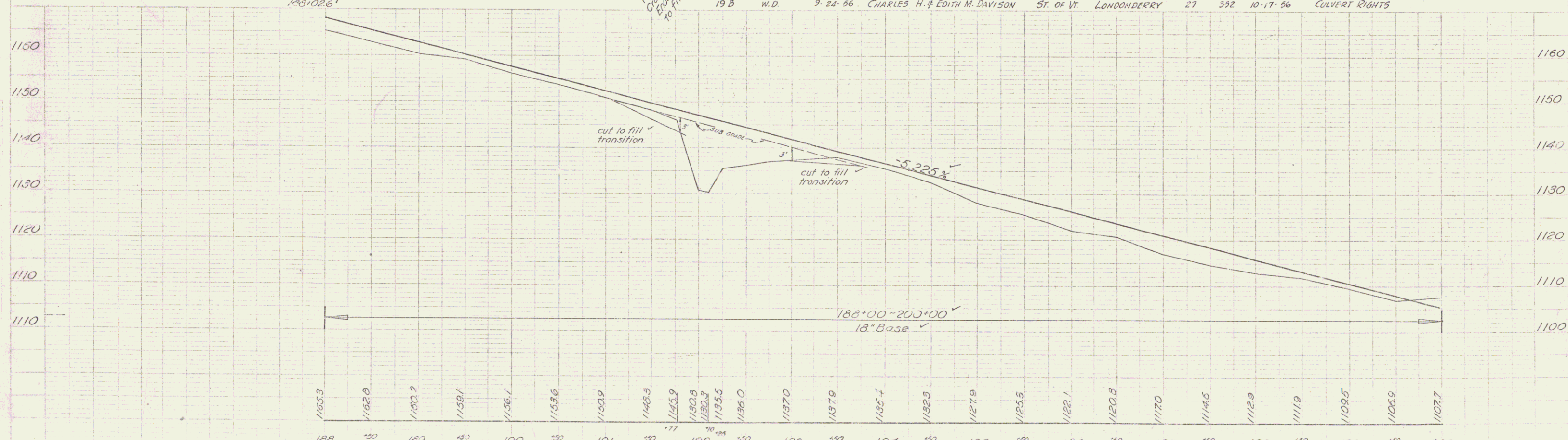
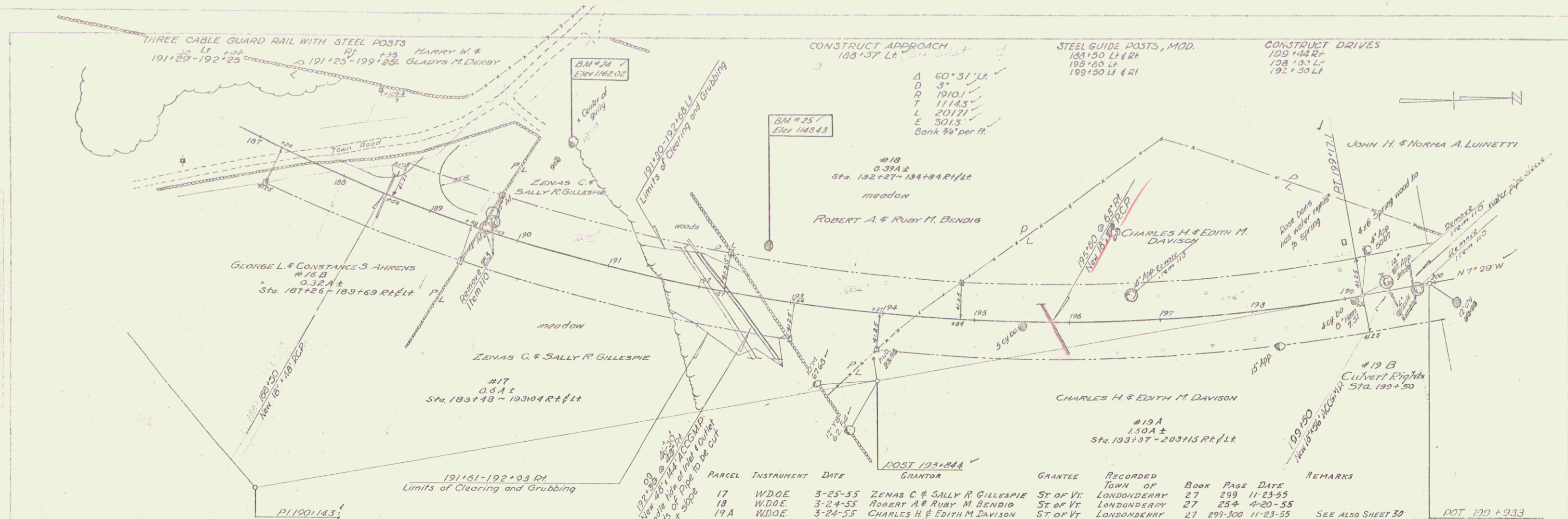
PARCEL	INSTR.	DATE	GRANTOR	GRANTEE	RECORDED	BOOK	PAGE	DATE	REMARKS
13 AB	WDOE	3-24-55	JOHN N. & SHIRLEY E. STEVENS	ST. OF VT.	LONDONDERRY	27	295	11-23-55	SEE ALSO SHEET 12

PLAN	DATE	BY
11/14/55	11/14/55	APR

FRIBBLE	DATE	BY
11/14/55	11/14/55	APR

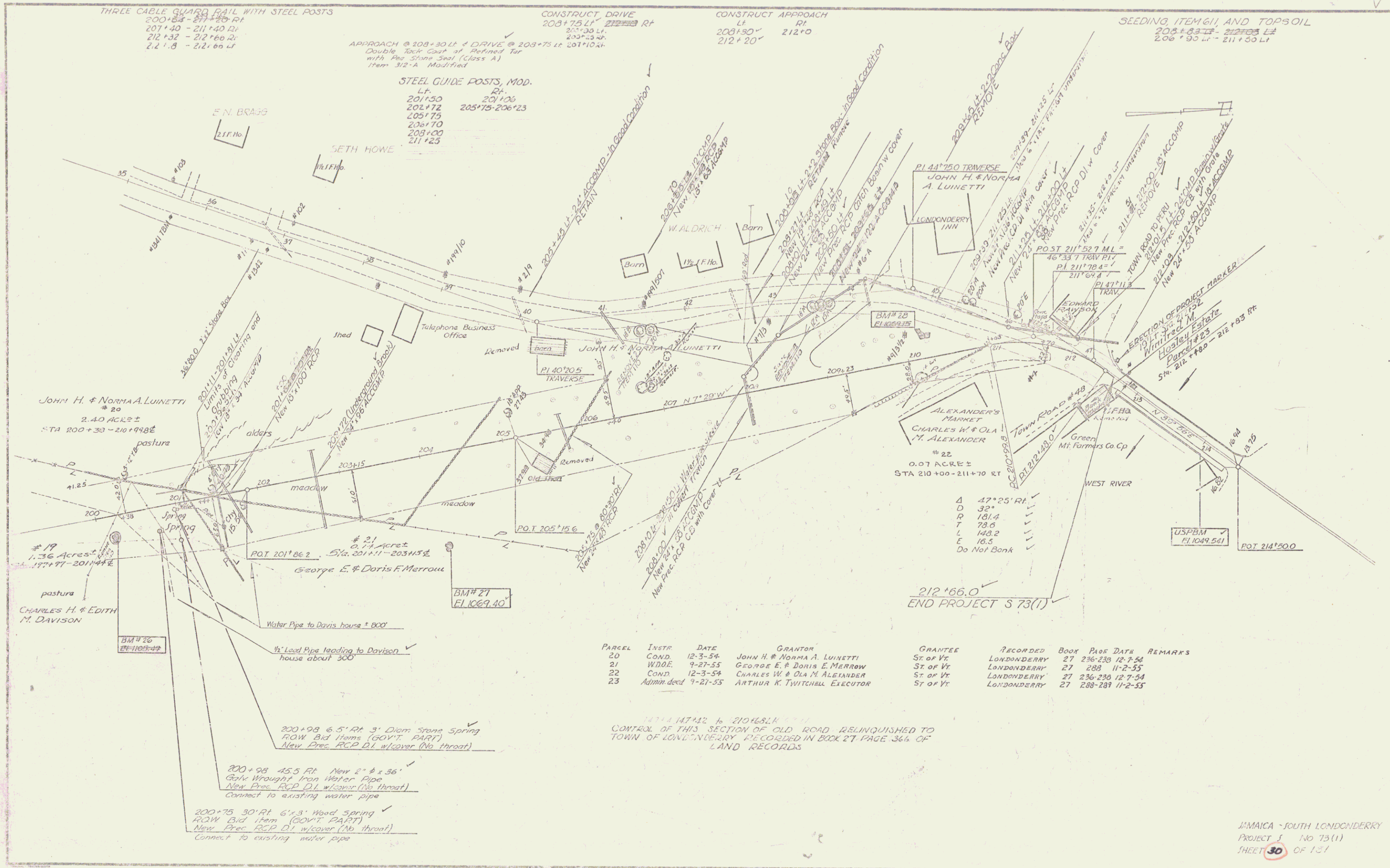


JAMAICA - LONDONDERRY
 PROJ. S. NO. 73 (1)
 Sheet 25 of 131



BM #24 S.I.R. 13' Moale 123' Lt. Sta. 190+30 El. 1162.02 ✓
 BM #25 Sool on Boulder 56' Lt. Sta. 192+03 El. 1143.43 ✓

200 JAMAICA LONDONDERRY
 Project 5 no. 1317
 Sheet 17 of 131



PARCEL	INSTR	DATE	GRANTOR	GRANTEE	RECORDED	BOOK	PAGE	DATE	REMARKS
20	COND.	12-3-54	JOHN H. & NORMA A. LUINETTI	ST. OF VT.	LONDONDERRY	27	236-238	12-7-54	
21	W.D.D.E.	9-27-55	GEORGE E. & DORIS E. MERRAW	ST. OF VT.	LONDONDERRY	27	289	11-2-55	
22	COND.	12-3-54	CHARLES W. & OLA M. ALEXANDER	ST. OF VT.	LONDONDERRY	27	236-238	12-7-54	
23	Admin. deed	9-27-55	ARTHUR K. TWITCHELL EXECUTOR	ST. OF VT.	LONDONDERRY	27	288-289	11-2-55	

171.14742 ± 210168.14
 CONTROL OF THIS SECTION OF OLD ROAD RELINQUISHED TO
 TOWN OF LONDONDERRY RECORDED IN BOOK 27 PAGE 366 OF
 LAND RECORDS

JAMAICA - SOUTH LONDONDERRY
 PROJECT 5 No 73(1)
 SHEET 30 OF 131