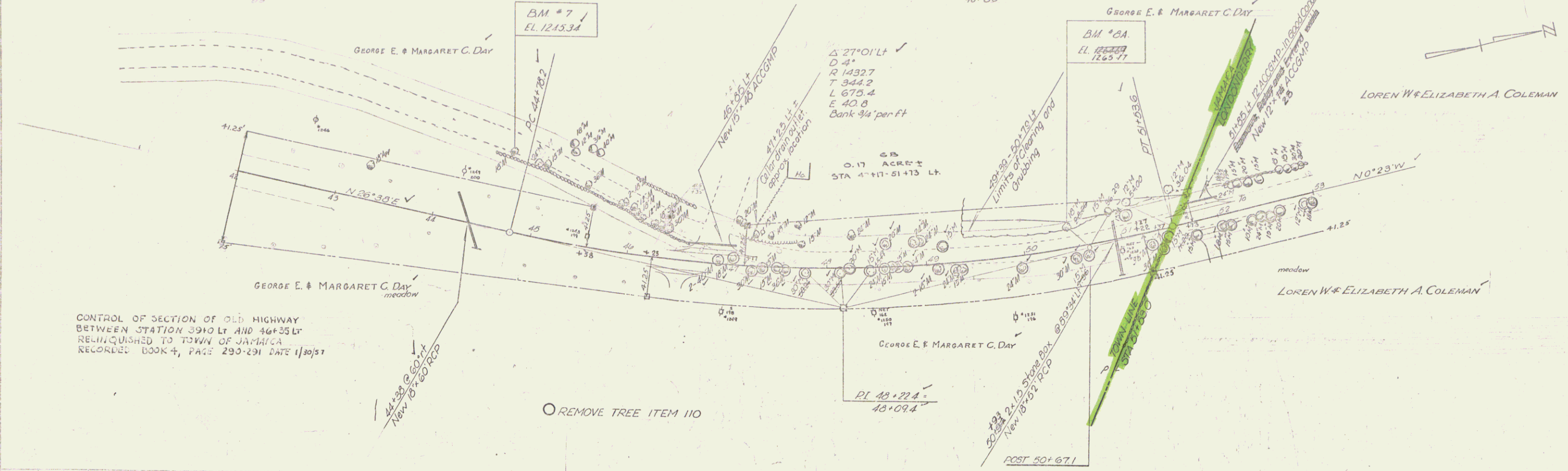


THREE CABLE GUARD RAIL WITH STEEL POSTS  
 LT 44+25-46+28  
 1.2 103

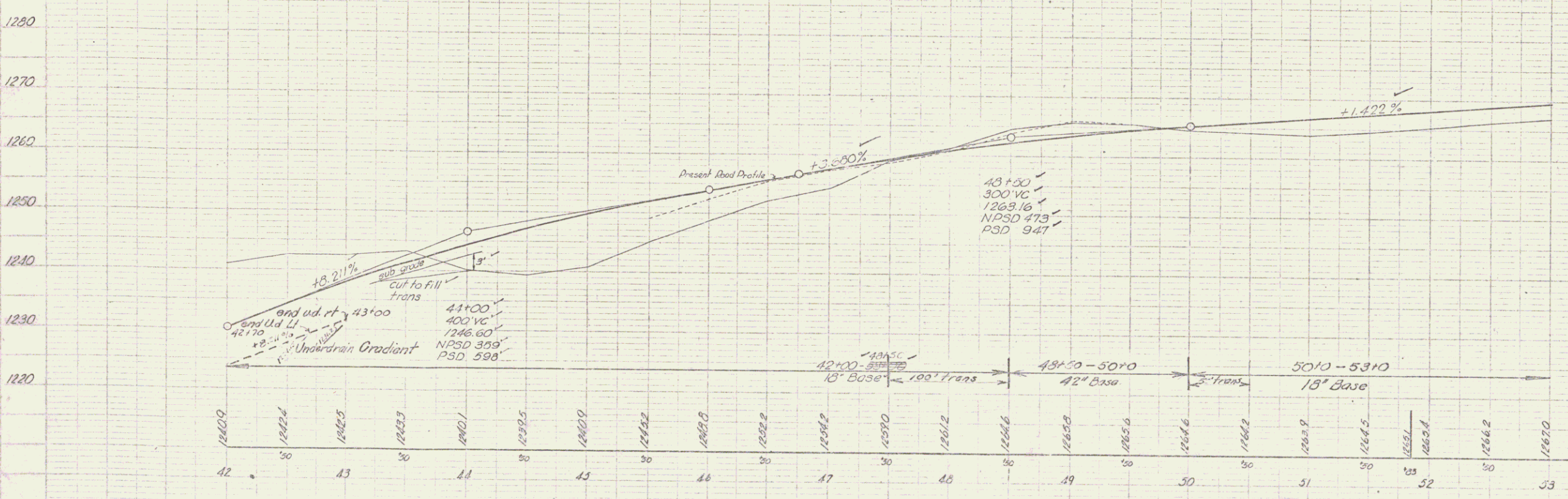
STEEL GUIDE POSTS, MOD  
 44+38 LT 2  
 46+30-47+28.1 4  
 50+33 LT

PLANK GUARD RAIL  
 46+77-47+25 FT LT

CONSTRUCT DRIVES  
 LT 46+88-50+63  
 51+05-51+08 135  
 48+80



CONTROL OF SECTION OF OLD HIGHWAY  
 BETWEEN STATION 39+0 LT AND 46+25 LT  
 RELINQUISHED TO TOWN OF JAMAICA  
 RECORDED BOOK 4, PAGE 290-291 DATE 1/30/51



BM #7 S1R 18' Maple 78' Lt Sta 44+66 elev 1245.34  
 BM #8 S1R 18' Maple 21' Lt Sta 50+47 EL 1268.89 Removed.  
 BA S1R 18' Maple 25' Lt Sta 50+50 EL 1255.17

JAMAICA-LONDONDEDRY  
 Project 5 73(1)  
 Sheet 15 of 131