

INDEX OF SHEETS

SHEET NO.	TITLE PAGE
1	TITLE PAGE
2	TYPICAL CROSS-SECTION OF IMPROVEMENT (DOUBLE TACK COAT OF REFINED TAR WITH PEA STONE SEAL, ITEM 23A)
3	BANKING AND WIDENING TABLES
4-9	PLAN AND PROFILE
10	STANDARD STRUCTURE SHEET S-28 PIPE CULVERTS
11	" " " " S-49-46 GUARD RAIL
12	" " " " S-30A BOUNDARY MARKERS
13	" " " " S-40 BARRICADES, SIGNS & LIGHTS
14	" " " " S-41 ROUNDING OF SLOPES
15-27	CROSS SECTIONS

STANDARD STRUCTURE SHEETS APPROVED BY THE CHIEF ENGINEER VERMONT STATE DEPARTMENT OF HIGHWAYS

S-28	APRIL 26, 1941
S-30	MAY 12, 1941
S-30A	APRIL 19, 1941
S-40	DECEMBER 18, 1945
S-49-46	JANUARY 13, 1947

(To Be Returned To R.O.W. Division)

APPROVED OF
PC

RIGHT-OF-WAY DIVISION
NON FILE

STATE OF VERMONT
STATE HIGHWAY DEPARTMENT

PLAN AND PROFILE OF PROPOSED
STATE HIGHWAY

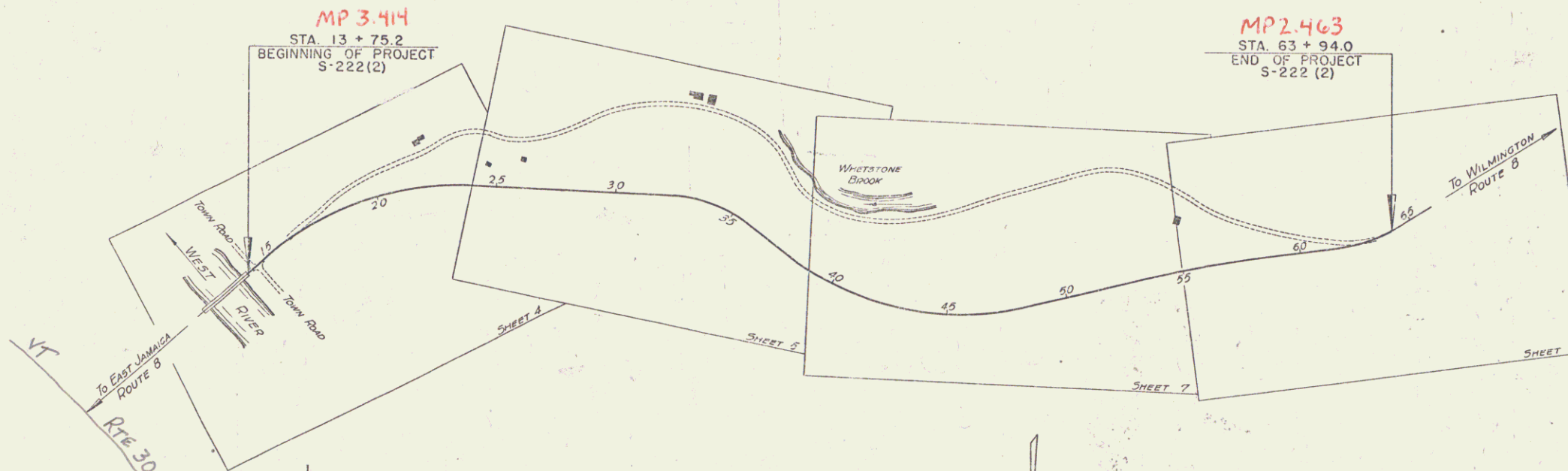
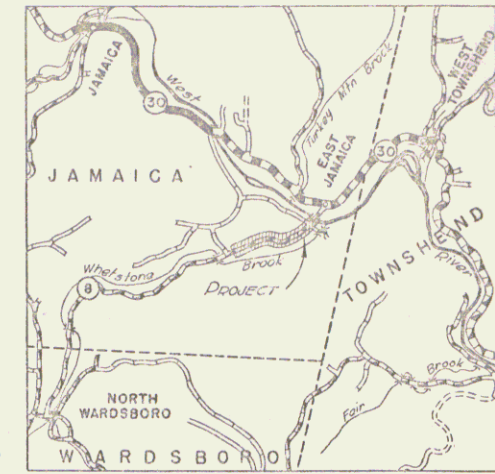
SECONDARY PROJECT

TOWN OF JAMAICA

ROUTE 8
EAST JAMAICA - WILMINGTON ROAD

BEGINNING AT A POINT ON ROUTE 8, 0.076 MILES SOUTHERLY FROM ITS INTERSECTION WITH ROUTE 30 AND EXTENDING SOUTHWESTERLY 0.951 MILES
LENGTH OF PROJECT 5018.8 FEET = 0.951 MILES

FED. ROAD DIST. NO.	STATE	PROJECT NO.	SHEET NO.	TOTAL SHEETS
9	Vt.	222(2)	1	27



Prop: 00R698
Route: VT100

ITEM	DESCRIPTION	QUANTITY	UNIT
1	GRAVEL	1000	CU YD
2	CRUSHED STONE	500	CU YD
3	GRAVEL	200	CU YD
4	CRUSHED STONE	100	CU YD
5	GRAVEL	50	CU YD
6	CRUSHED STONE	25	CU YD
7	GRAVEL	12.5	CU YD
8	CRUSHED STONE	6.25	CU YD
9	GRAVEL	3.125	CU YD
10	CRUSHED STONE	1.5625	CU YD

ITEM	DESCRIPTION	QUANTITY	UNIT
1	GRAVEL	1000	CU YD
2	CRUSHED STONE	500	CU YD
3	GRAVEL	200	CU YD
4	CRUSHED STONE	100	CU YD
5	GRAVEL	50	CU YD
6	CRUSHED STONE	25	CU YD
7	GRAVEL	12.5	CU YD
8	CRUSHED STONE	6.25	CU YD
9	GRAVEL	3.125	CU YD
10	CRUSHED STONE	1.5625	CU YD

APPROVED: *Mar. 23, 1947*
H. August
COMMISSIONER OF HIGHWAYS

SUBMITTED BY ORDER OF THE STATE HIGHWAY BOARD

RECOMMENDED FOR APPROVAL
DISTRICT ENGINEER
PUBLIC ROADS ADMINISTRATION
FEDERAL WORKS AGENCY

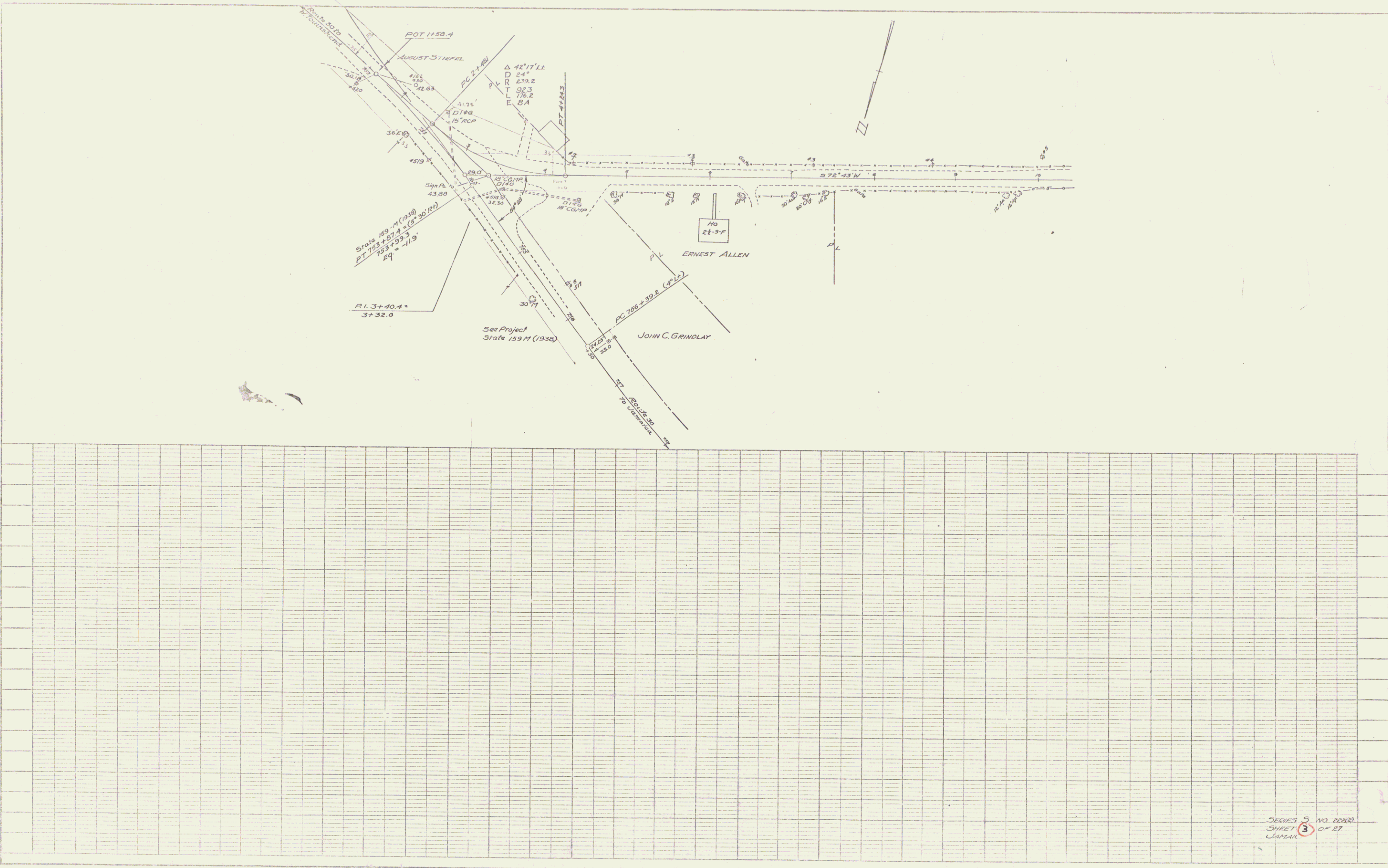
THESE PLANS ARE SUBJECT TO SUCH REVISIONS AS MAY BE REQUIRED BY THE PUBLIC ROADS ADMINISTRATION OR THE COMMISSIONER OF HIGHWAYS.
CONSTRUCTION IS TO BE CARRIED ON IN ACCORDANCE WITH THE PLANS AND THE STANDARD ROAD AND BRIDGE SPECIFICATIONS OF 1936, AS APPROVED DECEMBER 29TH, 1935 BY THE PUBLIC ROADS ADMINISTRATION, INCLUDING ALL SUBSEQUENT APPROVED REVISIONS AND SUCH REVISED SPECIFICATIONS AND SPECIAL PROVISIONS AS ARE SUBMITTED WITH THE PLANS.

APPROVED: *Stearns R. Jenkins*
HIGHWAY ENGINEER
APPROVED: *W. H. Johnson*
DISTRICT HIGHWAY COMMISSIONER
SERIES 5 No. 222(2) FILED
SHEET 6 of 27

STEARNS R. JENKINS
- 47100

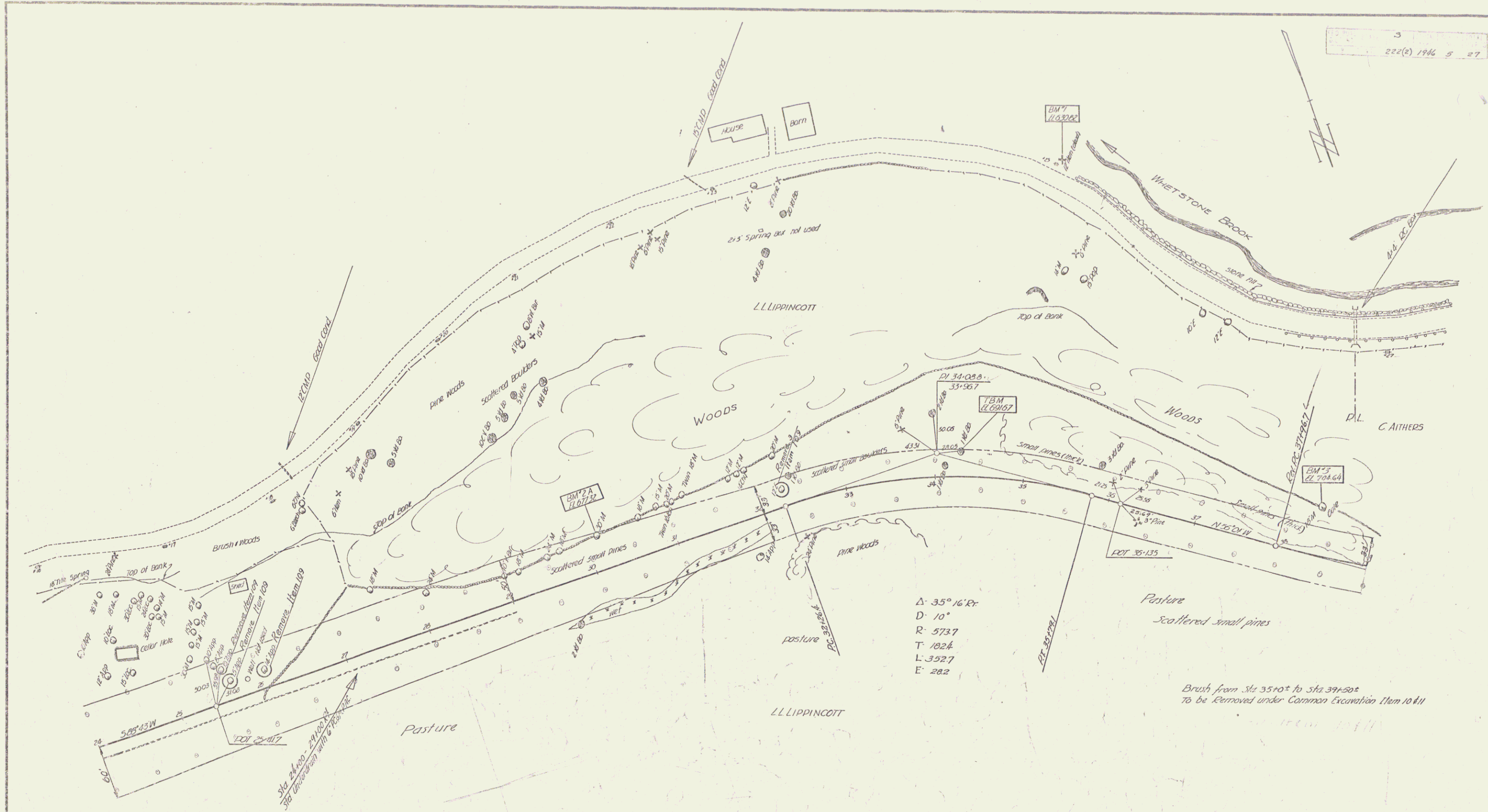
PLAN
 DATE: 1/14/37
 DRAWN BY: GML
 CHECKED BY: Y. B. C.

PROFILE
 DATE: 1/14/37
 DRAWN BY: GML
 CHECKED BY: Y. B. C.



SERIES 5 NO. 2000
 SHEET 3 OF 27
 LAMAR

PLATE 1 - PLAN - PROFILE
 NEW YORK & COLUMBIA CO., NEW YORK
 1937



B.M. #27 Spike in Post of 30" Maple 36.0' Lt. of Sta. 30+13 Elev. 677.32
 T.B.M. Spot on Boulder 26' Lt. of Sta. 34+23 Elev. 691.67
 B.M. #3 Spike in Post of 18" Maple 52' Lt. of Sta. 34+36 Elev. 706.64

ESTIMATE QUANTITIES

Surveyed by
 Designed by
 Drawn by JAMAICA
 Traced by
 Checked by
 Series 3 No. 222(E) Filed
 Sheet 5 of 27 Sheets

