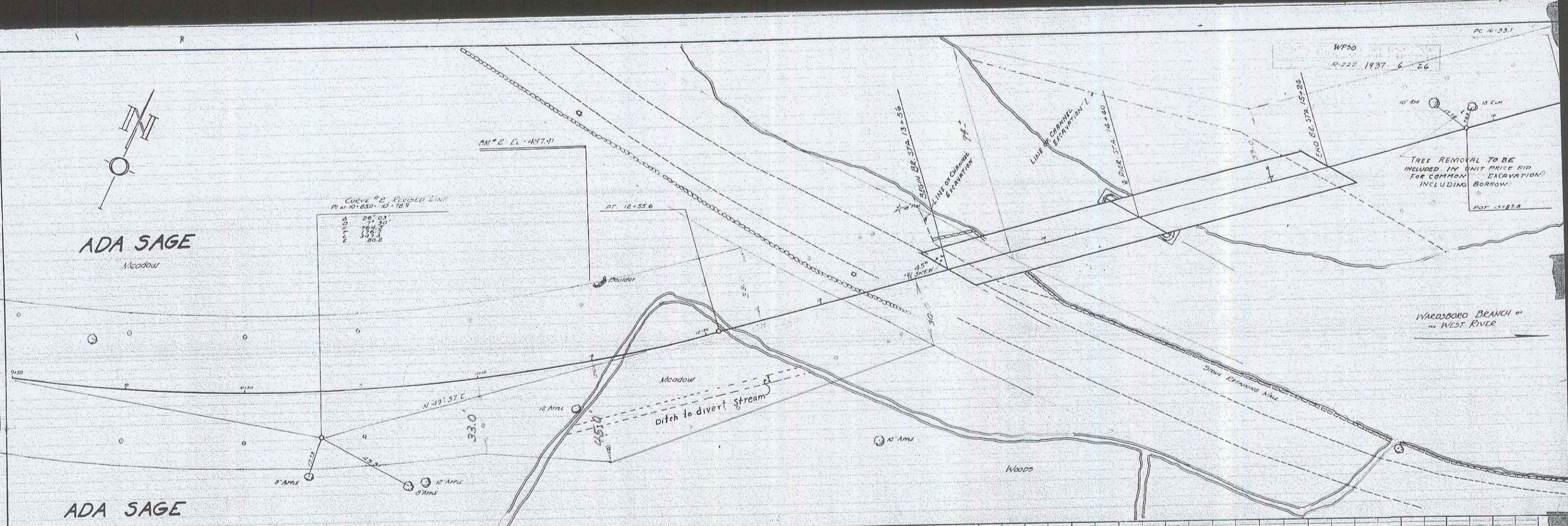


18' Elm. 19ft. Left @ Sta. 2+38, El. 300.00

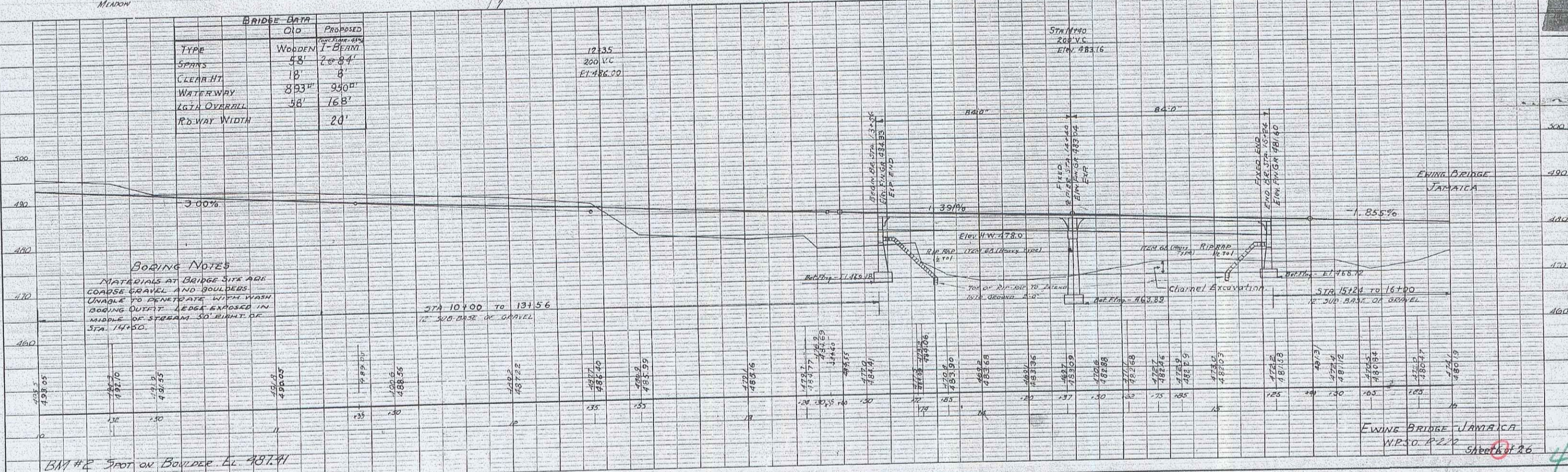
Ewing Bridge
 JAMAICA
 W.P.S.O. R-222
 Sheet 4 of 26

PLAN
 DATE BOOK
 BY
 CHECKED
 NO.

NOTE
 DATE
 BY
 CHECKED
 NO.



BRIDGE DATA	
TYPE	WOODEN
SPANS	58
CLEAR HT.	18'
WATERWAY	893"
LGTH OVERALL	58'
R.D. WAY WIDTH	20'

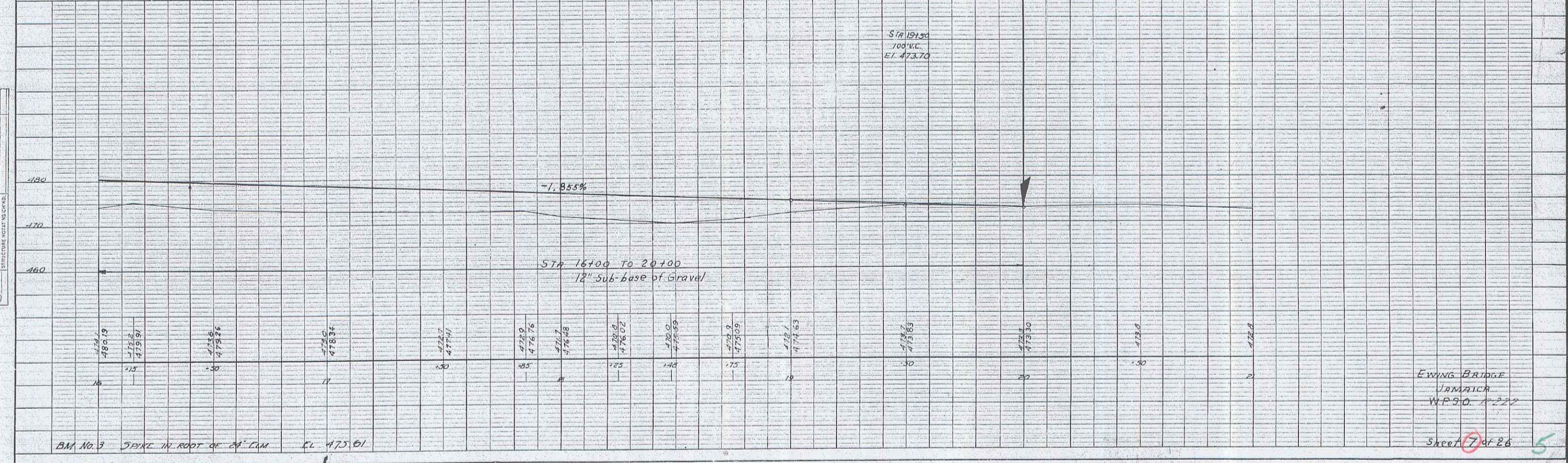
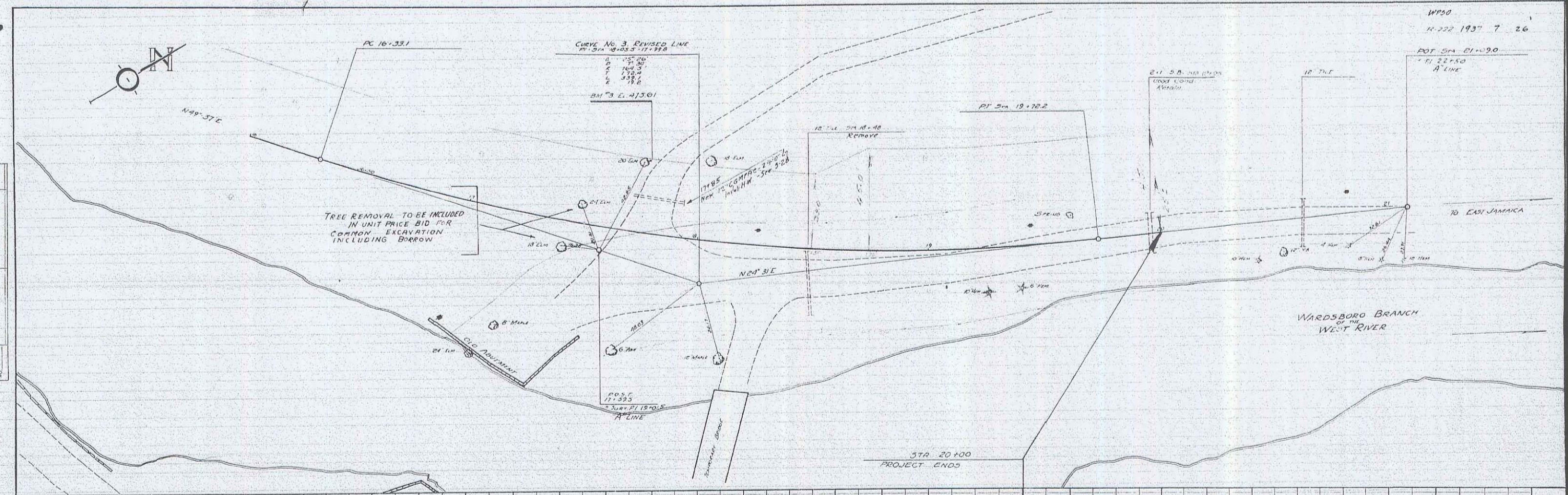


BORING NOTES
 MATERIALS AT BRIDGE SITE ARE
 COARSE GRAVEL AND BOULDERS
 UNABLE TO PENETRATE WITH WASH
 BORING OUTLET. LEGS EXPOSED IN
 MIDDLE OF STREAM 30' RIGHT OF
 STA 14+50.

BAR #2 SPOT ON BOULDER LL 497.91

EWING BRIDGE JAMAICA
 W.P. 222 SHEET 26

WPSO
 11-222 1937 7 26
 POF Sta. 21+90
 A LINE



PLAN
 OPERATED BY
 NOTE BOOK
 PLANNING CHECKED
 BY
 NO.

PROFILE
 OPERATED BY
 NOTE BOOK
 PROFILE CHECKED
 BY
 NO.

BM No. 3 SPIKE IN ROOT OF C.L.M. CL 475.01

EWING BRIDGE
 JAMNICK
 W.P.S.O. 11-222

Sheet 17 of 26