

PLAN
 DATE: 1/25/64
 SCALE: 1" = 40' (PLAN)
 DRAWN BY: W.J. B. 50

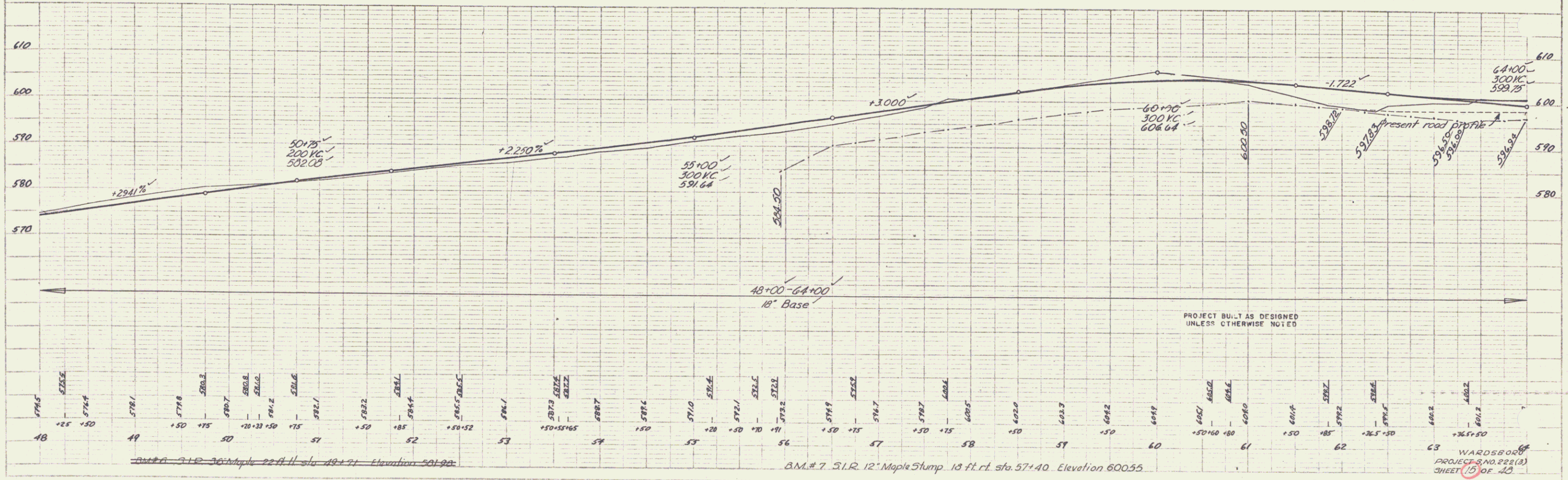
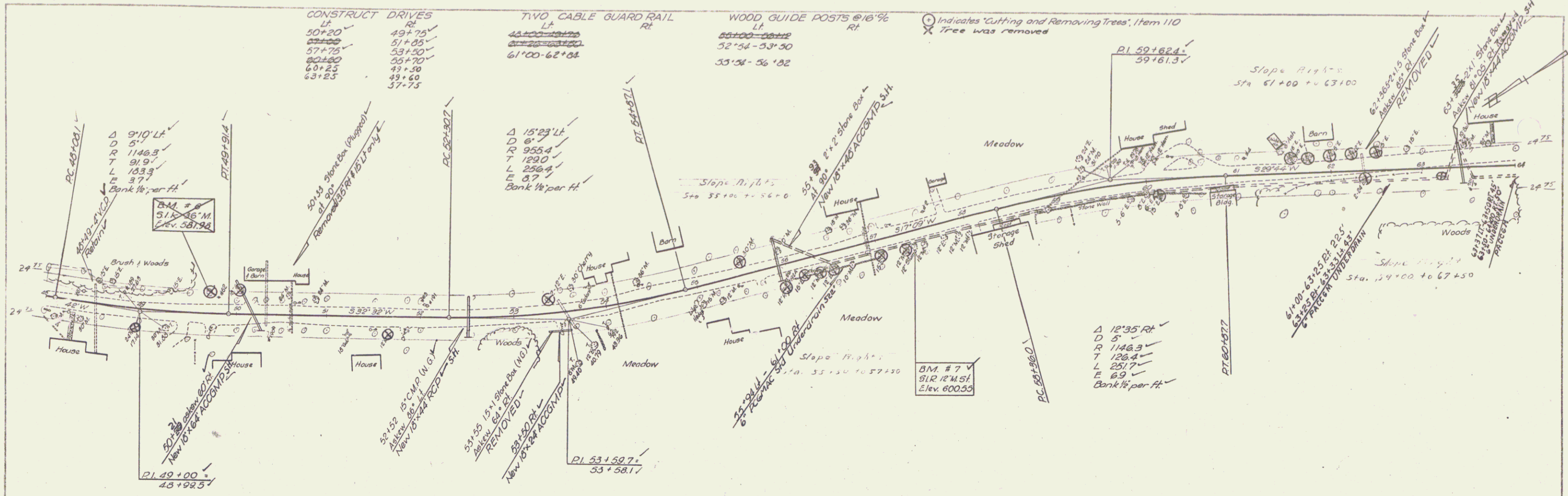
PROFILE
 DATE: 1/25/64
 SCALE: 1" = 10' (VERT.)
 DRAWN BY: W.J. B. 50

CONSTRUCT DRIVES
 LT RT
 50+20 49+75
 57+75 51+05
 60+00 55+70
 60+25 49+50
 63+25 49+60
 57+75

TWO CABLE GUARD RAIL
 LT RT
 48+00-50+20
 52+54-53+90
 61'00-62+04

WOOD GUIDE POSTS @ 16' %
 LT RT
 50+00-50+20
 52+54-53+90
 55'58-56'02

Indicates 'Cutting and Removing Trees', Item 110
 X Tree was removed



BM # 7 31.2 Maple St. 11 ft. elev. 48+91 Elevation 501.92

BM # 7 31.2 Maple Stump 13 ft. rt. sta. 57+40 Elevation 600.55

C3 WARD BORD
 PROJECT NO. 221(2)
 SHEET 15 OF 20