

INDEX OF SHEETS

1. Title Page
2. Typical Sheet
3. Summary of Items and Drainage
4. Grades and Earthworks
5. Blank
6. Plan and Profile
7. B-5 Slope Grading 12/ 6/71
8. B-11 Slope Stabilization 12/ 8/71
9. E-3 Bridge Const. Approach Signs 12/14/71
10. E-5 Road Const. Betterment Project 12/14/71
11. E-6 On Project Const. Signs 12/14/71
12. G-9 Bridge Railing for Bridge Approaches 12/14/71
13. G-8a Connection Details, Bridge Appr. Railing and Standard Steel Beam Guard Rail 12/ 8/71
14. Standard Steel Beam Guard Rail Detail Sheet
15. Blank
- 16-17. SB-R1-71 Sheets 1 and 2 Bridge Rail Detail Sheet 8/24/71 10/ 5/71
18. SCB-D1-71 General Information 1/24/72
19. SCB-06-71 Details A, B and F Const. Details 12/14/71
20. SCB-08-71 Detail A, Bearing Device 12/14/71
21. SCB-09-71 Detail A, Curtain Walls 12/14/71
- 22-31. SR 100 Series
- 32-36. Cross Sections

STATE OF VERMONT
DEPARTMENT OF HIGHWAYS



PROPOSED IMPROVEMENT

BETTERMENT PROJECT

TOWN OF STOWE
COUNTY OF LAMOILLE
VT. ROUTE 100

BEGINNING AT A POINT APPROXIMATELY 1.065 MILES
SOUTHWESTERLY OF THE MORRISTOWN-STOWE
TOWN LINE AND EXTENDS NORTHEASTERLY 0.226
MILES.

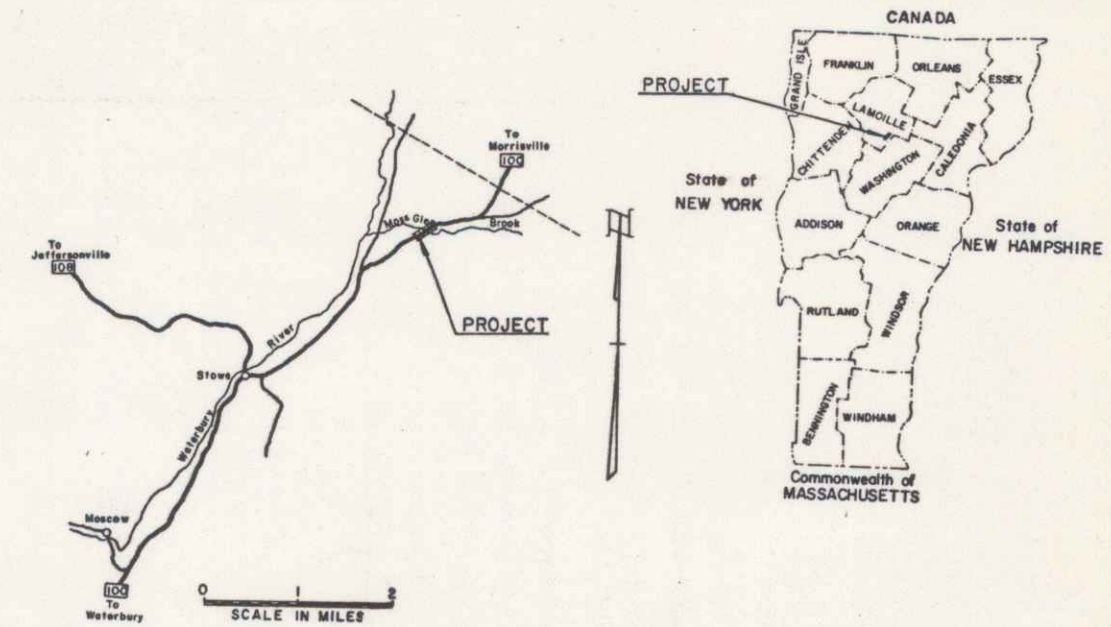
LENGTH OF ROADWAY 1149.89 FEET = 0.216 MILES
LENGTH OF BRIDGE 54.05 FEET = 0.010 MILES
LENGTH OF PROJECT 1195.94 FEET = 0.226 MILES

RECORD PLANS

MATERIALS TYPE PAVEMENT AREA
2"-4" BITUMINOUS CONC. 5213 SY.
SUBBASE OF GRAVEL—PERCY PIT—MORRISTOWN, VT.
BITUMINOUS CONCRETE—L.M. PIKE—WILLISTON, VT.
MEMBRANE WATERPROOFING—BURLINGTON INDUSTRIES—BURLINGTON, MA.
METAL CULVERT PIPE—NORTHEASTERN CULVERT CORP.—WESTMINSTER, VT.
ALUMINUM & STANDARD STEEL BEAM GUARD RAIL—GRISWOLD FENCE CO.—WILLISTON, VT.
TAR EMULSION—COPELAND SEALER—COPELAND, CT.
CONCRETE CLASS A & B—A.G. ANDERSON READY MIX—WATERBURY, VT.
STEEL PILING, STRUCTURAL STEEL & BRIDGE RAILING—VERMONT STRUCTURAL STEEL CORP.—BURLINGTON, VT.
REINFORCING STEEL—PIONEER VALLEY STEEL CO., INC.—GREENFIELD, MA
BRIDGE PAINT—BURGESS FOBES PAINT CO.—PORTLAND, ME.
WATER REPELLENT—KIBBY EQUIPMENT CO.—WHITE RIVER JUNCTION, VT.
EPOXY BONDING COMPOUND & EPOXY MORTAR COMPOUND—DURAL INTERNATIONAL CORP.—DEER PARK, N.Y.

CONTRACTOR
BRIDGES INC.
MONTPELIER, VT.
RES. ENG.—DONALD E. BURBANK.
RECORD PLANS—A.G. SPIDLE.

CONTRACT
DATED—MAY 30, 1972.
STARTED—MAY 30, 1972.
COMPLETED—NOVEMBER 3, 1972.
ACCEPTED—NOVEMBER 3, 1972.

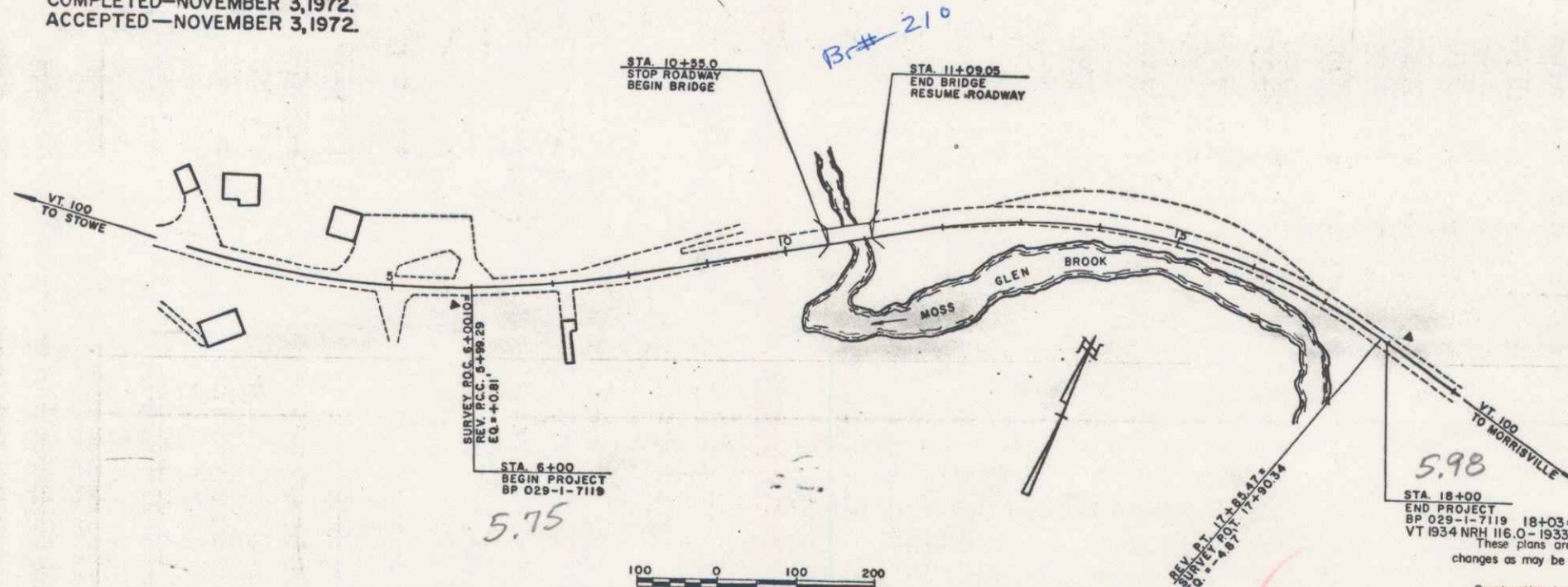


MP 5.85
RIGHT-OF-WAY DIVISION
TOWN FILE
PERPETUAL
Town of Stowe
(To Be Returned To R.O.W. Division)

M

CONVENTIONAL SIGNS

- COUNTY LINE
 - TOWN LINE
 - LIMITS OF ACCESS
 - POINT OF ACCESS
 - FENCE LINE
 - STONE WALL
 - TRAVELED WAY
 - GUARD RAIL
 - RAILROAD
 - SURVEY LINE
 - CULVERT
 - POWER POLE
 - TELEPHONE POLE
 - TREES
 - BP CONST. IDENTIFICATION SIGNS
 - PROPERTY LINE
 - R.O.W. TAKING LINE
 - SLOPE RIGHTS
 - TOP OF CUT
 - TOE OF SLOPE
- STOWE—BP 029-1-7119
CONTRACTOR—BRIDGES, INC.
MONTPELIER, VT.
RECORD PLANS—A.G. SPIDLE.
CONST. COMPLETED—NOVEMBER 3, 1972.



NOTE: ANY FURTHER INFORMATION CONCERNING
FINAL QUANTITIES, AMOUNTS OR OTHER DETAILS
RELATIVE TO THIS PROJECT MAY BE FOUND IN
EITHER THE FIELD BOOKS OR THE ESTIMATE
FILE.

Construction is to be carried on in accordance
with these plans and the Standard Specifications
for Highway and Bridge Construction dated
January 3, 1972 as approved by THE FEDERAL HIGHWAY
ADMINISTRATION ON December 28, 1971 for use on
this project, including all subsequent revisions and
such revised specification and special provisions as
are incorporated in these plans.

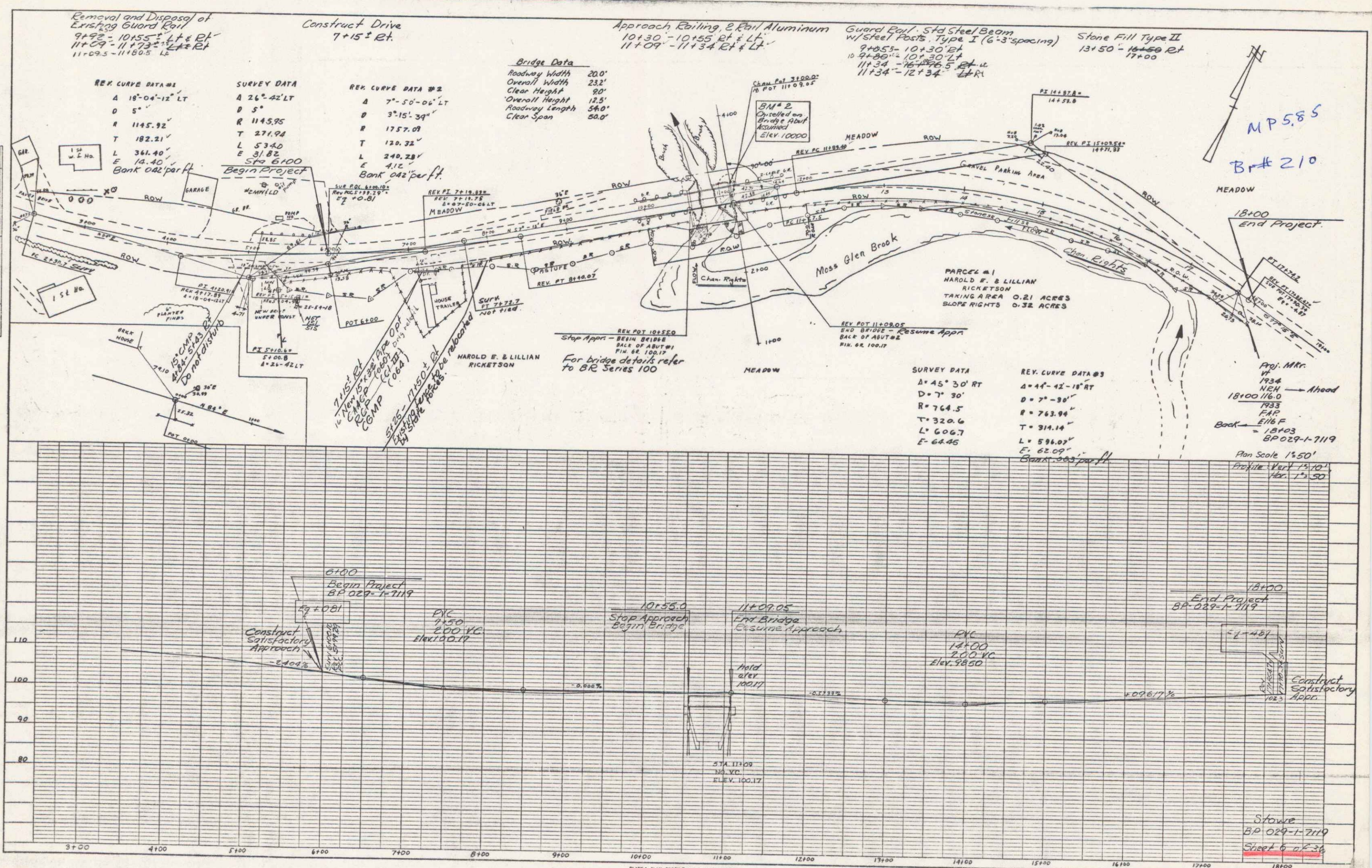
SUBMITTED BY ORDER OF THE STATE HIGHWAY BOARD
APPROVED: *ROM* DATE 4-11-72
ACT. CHIEF ENGINEER

TOWN: STOWE
ROUTE: VT 100
DATE: 04-11-1972
PROJECT: BP 029-1-7119
P.N. CORG 84

PROJECT BP NO 029-1-7119
SHEET 1 OF 36 SHEETS
D-10 SRS 12/17/70

PLAN
 CHECKED BY
 DATE

PROFILE
 CHECKED BY
 DATE



MP 5.85
 B# 210