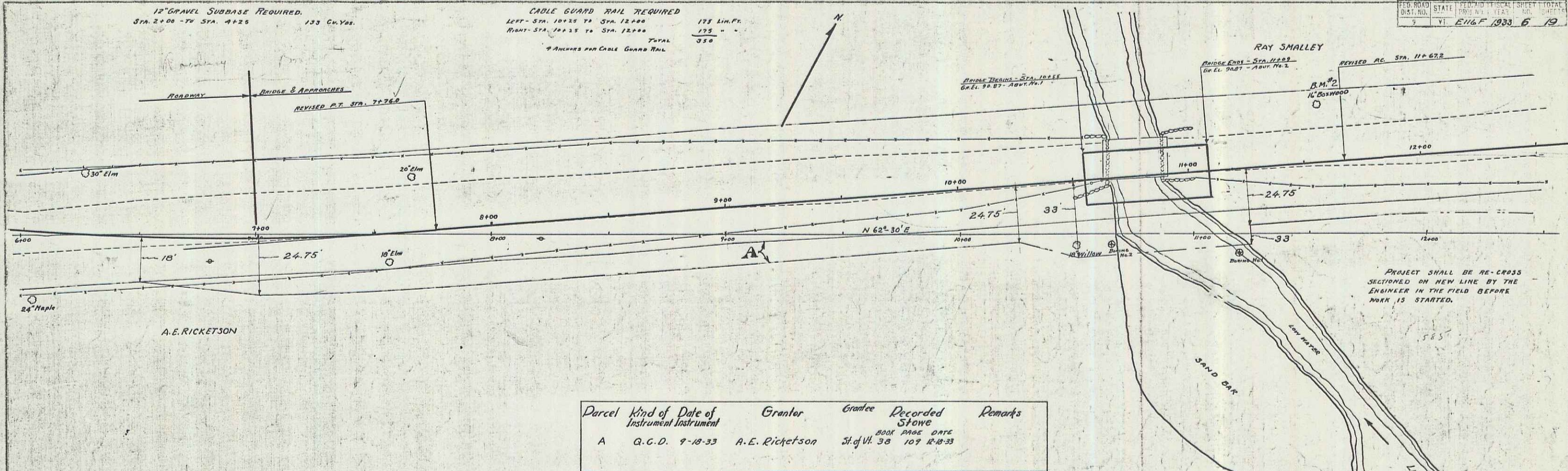


12" GRAVEL SUBBASE REQUIRED.
Sta. 2+00 TO Sta. 4+25 133 Cu Yds.

CABLE GUARD RAIL REQUIRED
LEFT - Sta. 10+25 TO Sta. 12+00 175 Lin. Ft.
RIGHT - Sta. 10+25 TO Sta. 12+00 175 " "
TOTAL 350
ANCHORS FOR CABLE GUARD RAIL

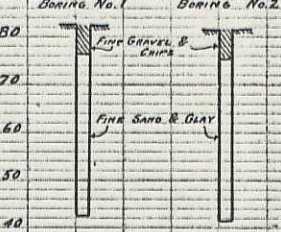
PER ROAD DIST. NO. STATE FED. AID PERCENT SHEET TOTAL
VI EUGF 1933 6 19



Parcel	Kind of Instrument	Date of Instrument	Grantor	Grantee	Recorded	Remarks
A	Q.C.D.	9-18-33	A.E. Ricketson	St. of Vt.	BOOK PAGE DATE 38 109 12-18-33	

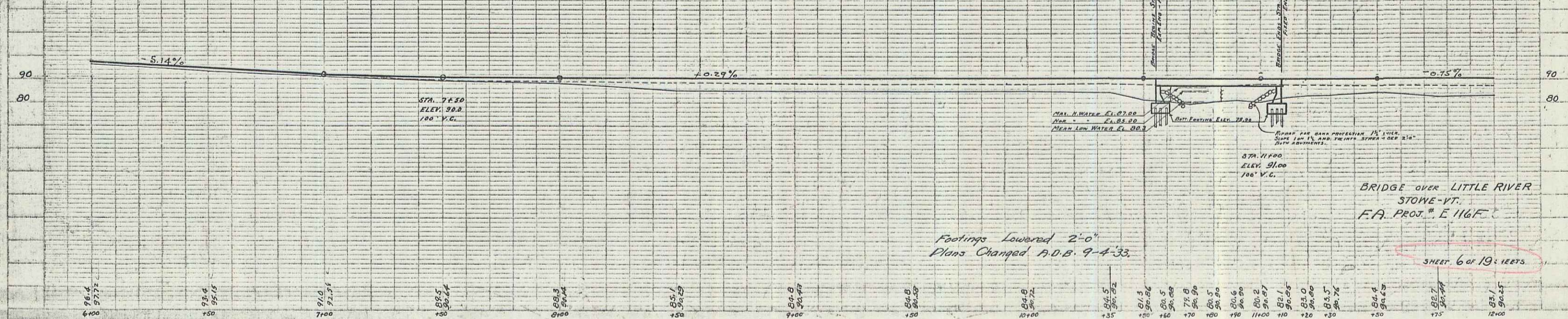
B.M. #2 SPIKE IN 16" BOXWOOD, 55' LT. STA. 11+53 ELEV. 87.54

WASH. BORING DATA



APPROXIMATE QUANTITIES

Item	Description	Quantity	Unit
10	SOLID ROCK EXCAVATION	4713	Cu Yds.
11	COMMON EXCAVATION (REL. ROADWAY)	133	"
12	SUB BASE OF GRAVEL	133	"
13	CHANNEL EXCAVATION	100	"
14	STRUCTURE EXCAVATION	138	"
15	GRAVEL SOURCE CONCRETE	937	"
16	CONCRETE CLASS A	61	"
17	CONCRETE CLASS B	38	"
18	REINFORCING STEEL	12026	Lbs.
19	TEMPORARY BRIDGE & REMOVAL OF PRESENT SUPERST.	1	Struct.
20	TIMBER CULVERT	740	Lin. Ft.
21	CABLE GUARD RAIL	350	Lin. Ft.
22	ANCHORS FOR CABLE GUARD RAIL	4	Each
23	GRAVEL SOURCE CONCRETE	16	Sq. Yds.
24	STEEL SUPERSTRUCTURE (39393#)	1	Struct.
25	PIPING FOR BANK PROTECTION	76	Cu Yds.



BRIDGE OVER LITTLE RIVER
STONE-VT.
F.A. PROJ. # E 116F

SHEET 6 OF 19 SHEETS