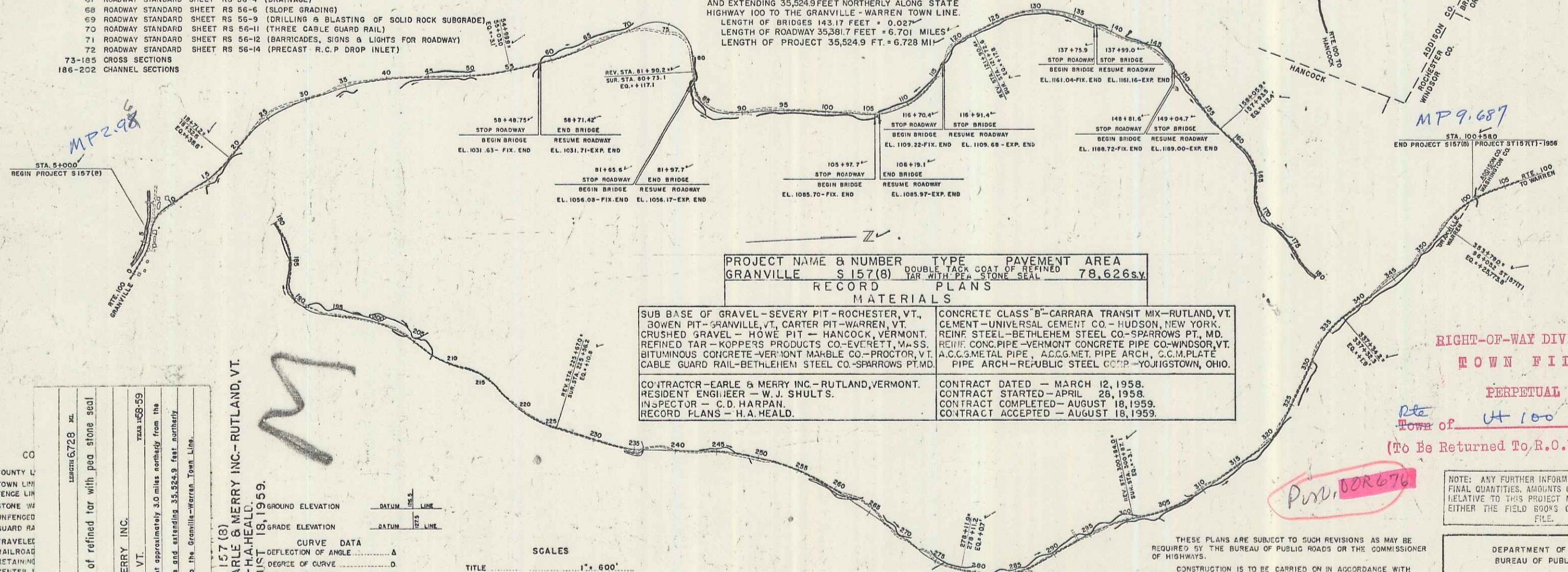


INDEX OF SHEETS

SHEET NO.	
1	TITLE PAGE
2	TYPICAL CROSS-SECTION OF IMPROVEMENT (DOUBLE TACK COAT OF REFINED TAR WITH PEASTONE SEAL)
3	BANKING AND WIDENING TABLES BW-1
4	QUANTITY SHEET (ITEMS)
5-6	QUANTITY SHEET (DRAINAGE)
7-16	EARTHWORK SHEETS
17-29	PLAN AND PROFILE SHEETS
40	DETAILS OF SUPERSTRUCTURE WIDENING-BRIDGE NO.1
41	DETAILS OF ABUTMENT NO.1 - BRIDGE NO.1
42	DETAILS OF ABUTMENT NO.2 - BRIDGE NO.1
43	DETAILS OF SUPERSTRUCTURE WIDENING-BRIDGE NO.2
44	DETAILS OF ABUTMENT NO.1 - BRIDGE NO.2
45	DETAILS OF ABUTMENT NO.2 - BRIDGE NO.2
46-47	DETAILS OF SUPERSTRUCTURE WIDENING-BRIDGE NO.3
48	DETAILS OF ABUTMENT NO.1 - BRIDGE NO.3
49	DETAILS OF ABUTMENT NO.2 - BRIDGE NO.3
50	DETAILS OF SUPERSTRUCTURE WIDENING-BRIDGE NO.4
51	DETAILS OF ABUTMENT NO.1 - BRIDGE NO.4
52	DETAILS OF ABUTMENT NO.2 - BRIDGE NO.4
53	DETAILS OF SUPERSTRUCTURE WIDENING-BRIDGE NO.5
54	DETAILS OF ABUTMENT NO.1 - BRIDGE NO.5
55	DETAILS OF ABUTMENT NO.2 - BRIDGE NO.5
56	DETAILS OF SUPERSTRUCTURE WIDENING-BRIDGE NO.6
57	DETAILS OF ABUTMENT NO.1 - BRIDGE NO.6
58	DETAILS OF ABUTMENT NO.2 - BRIDGE NO.6
59	DETAILS OF 9'-9" X 6'-7" C.G.M.P.R. ARCH AT STA. 190+50
60	DETAILS OF 7'-8" X 5'-5" C.G.M.P.R. ARCH AT STA. 282+50
61	DETAILS OF 10'-3" X 6'-9" C.G.M.P.R. ARCH AT STA. 300+90
62-63	REINFORCING STEEL DETAILS
64	STANDARD DRAWING 58-20-56
65	STANDARD DRAWING 55-56-2 (BARRICADES, SIGNS & LIGHTS FOR BRIDGES)
66	ROADWAY STANDARD SHEET RS 56-3 (MARKERS)
67	ROADWAY STANDARD SHEET RS 56-4 (DRAINAGE)
68	ROADWAY STANDARD SHEET RS 56-6 (SLOPE GRADING)
69	ROADWAY STANDARD SHEET RS 56-9 (DRILLING & BLASTING OF SOLID ROCK SUBGRADE)
70	ROADWAY STANDARD SHEET RS 56-11 (THREE CABLE GUARD RAIL)
71	ROADWAY STANDARD SHEET RS 56-12 (BARRICADES, SIGNS & LIGHTS FOR ROADWAY)
72	ROADWAY STANDARD SHEET RS 56-14 (PRECAST R.C.P. DROP INLET)
73-105	CROSS SECTIONS
186-202	CHANNEL SECTIONS

STATE OF VERMONT
DEPARTMENT OF HIGHWAYS
PROPOSED IMPROVEMENT
TOWN OF GRANVILLE
COUNTY OF ADDISON
VERMONT ROUTE 100
WARREN-HANCOCK ROAD

BEGINNING AT A POINT APPROXIMATELY 30 MILES NORTHERLY FROM THE GRANVILLE-HANCOCK TOWN LINE AND EXTENDING 35,524.9 FEET NORTHERLY ALONG STATE HIGHWAY 100 TO THE GRANVILLE-WARREN TOWN LINE.
LENGTH OF BRIDGES 143.17 FEET + 0.02"
LENGTH OF ROADWAY 35,381.7 FEET + 6.701 MILES
LENGTH OF PROJECT 35,524.9 FT. = 6.728 MILES



PROJECT NAME & NUMBER	TYPE	PAVEMENT AREA
GRANVILLE S 157(8)	DOUBLE TACK COAT OF REFINED TAR WITH PEASTONE SEAL	78,626 sq. yd.

RECORD PLANS MATERIALS	
SUB BASE OF GRAVEL - SEVERY PIT - ROCHESTER, VT. SOWEN PIT - GRANVILLE, VT. CARTER PIT - WARREN, VT. CRUSHED GRAVEL - HOWE PIT - HANCOCK, VERMONT. REFINED TAR - KOPPERS PRODUCTS CO - EVERETT, MASS. BITUMINOUS CONCRETE - VERMONT MARBLE CO - PROCTOR, VT. CABLE GUARD RAIL - BETHLEHEM STEEL CO - SPARROWS PT. MD.	CONCRETE CLASS "B" - CARRARA TRANSIT MIX - RUTLAND, VT. CEMENT - UNIVERSAL CEMENT CO - HUDSON, NEW YORK. REINF. STEEL - BETHLEHEM STEEL CO - SPARROWS PT. MD. REINF. CONC. PIPE - VERMONT CONCRETE PIPE CO - WINDSOR, VT. A.C.C. METAL PIPE, A.C.C. MET. PIPE ARCH, C.C.M. PLATE PIPE ARCH - REPUBLIC STEEL CORP - YOUNGSTOWN, OHIO.
CONTRACTOR - EARLE & MERRY INC. - RUTLAND, VERMONT. RESIDENT ENGINEER - W. J. SHULTS. INSPECTOR - C. D. HARPAN. RECORD PLANS - H. A. HEALD.	CONTRACT DATED - MARCH 12, 1958. CONTRACT STARTED - APRIL 28, 1958. CONTRACT COMPLETED - AUGUST 18, 1959. CONTRACT ACCEPTED - AUGUST 18, 1959.

CONTRACTOR: EARLE & MERRY INC., RUTLAND, VT.
LOCATION: Beginning at a point approximately 3.0 miles northerly from the Granville-Hancock Town Line and extending 35,524.9 feet northerly along State Highway 100 to the Granville-Warren Town Line.

GRANVILLE S 157(8)
CONTRACTOR - EARLE & MERRY INC. - RUTLAND, VT.
RECORD PLANS - H. A. HEALD
COMPLETED AUGUST 18, 1959.

SCALES

TITLE	1" = 600'
TYPICAL	1" = 2'
PLAN	1" = 50'
PROFILE	HORIZONTAL 1" = 50'
	VERTICAL 1" = 10'
CROSS-SECTIONS	1" = 5'

RIGHT-OF-WAY DIVISION
TOWN FILE
PERPETUAL
Town of Ut 100
(To Be Returned To R.O.W. Division)

NOTE: ANY FURTHER INFORMATION CONCERNING FINAL QUANTITIES, AMOUNTS OR OTHER DETAILS RELATIVE TO THIS PROJECT MAY BE FOUND IN EITHER THE FIELD BOOKS OR THE ESTIMATE FILE.

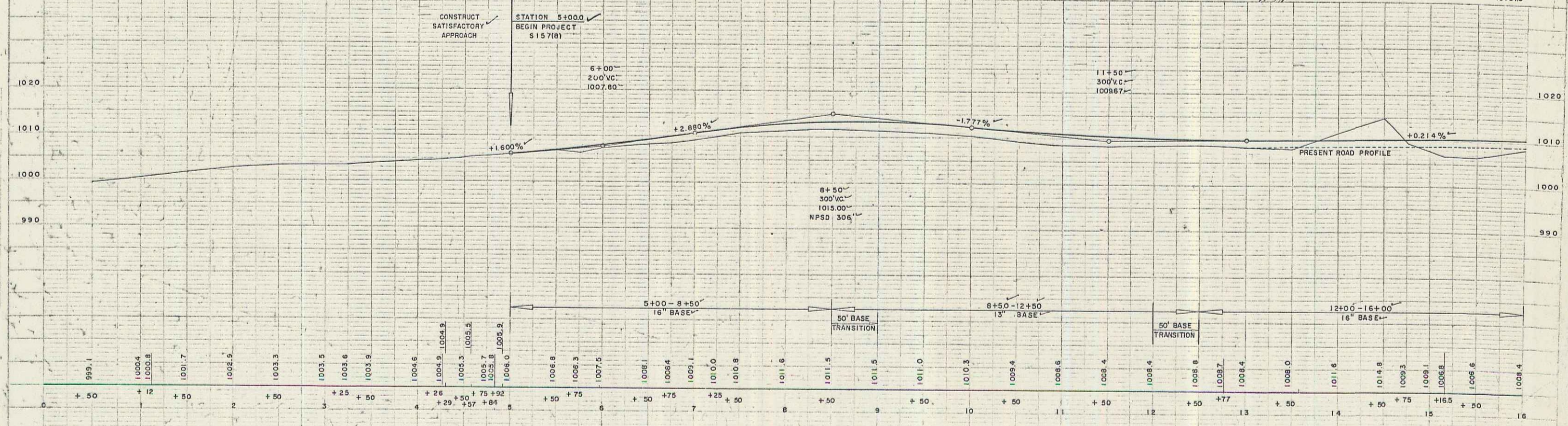
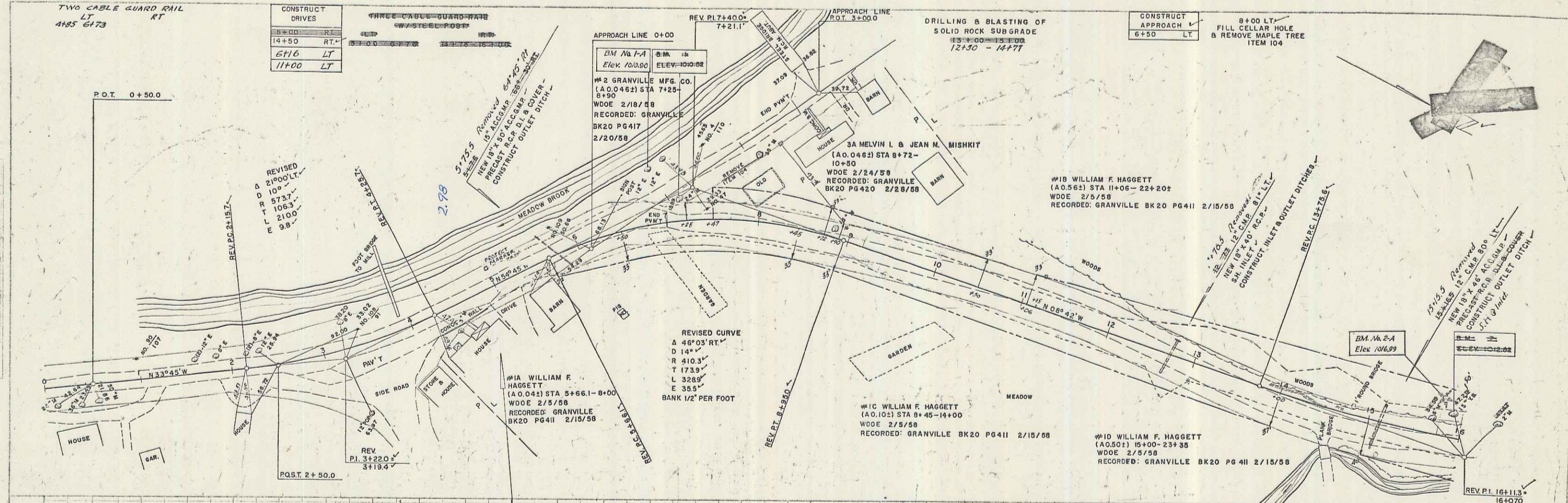
DEPARTMENT OF HIGHWAYS
BUREAU OF PUBLIC ROADS
APPROVED _____
DISTRICT ENGINEER DATE _____

APPROVED <i>H. A. Heald</i> RECORDING ENGINEER DATE <i>2/13/59</i>	APPROVED <i>W. J. Shults</i> RESIDENT ENGINEER DATE <i>Feb. 14, 1958</i>	APPROVED <i>A. O. Burt</i> BRIDGE ENGINEER DATE <i>2/11/58</i>	APPROVED _____ DISTRICT ENGINEER DATE _____	APPROVED <i>D. M. Lane</i> HIGHWAY ENGINEER DATE <i>2/14/58</i>	APPROVED <i>H. A. Heald</i> CONSULTING ENGINEER DATE <i>2/14/58</i>
--	--	--	---	---	---

PROJECT S NO. 157(8)
SHEET 1 OF 191 SHEETS
WEBSTER-MARTIN INC. CONSULTING ENGINEERS
SOUTH BURLINGTON, VERMONT.

TWO CABLE GUARD RAIL
LT RT
4485 6473

CONSTRUCT DRIVES		THREE CABLE GUARD RAIL (W/STEEL POSTS)	
14+50	RT	14+50	RT
616	LT	11+00	LT
11+00	LT		



BM 1-A SLT 12" Elm. 55' Lt. Sta. 6+90 Elev. 1010.80
 BM 1-B SLT 24" MAPLE 34' Lt. Sta. 7+17 Elev. 1010.55

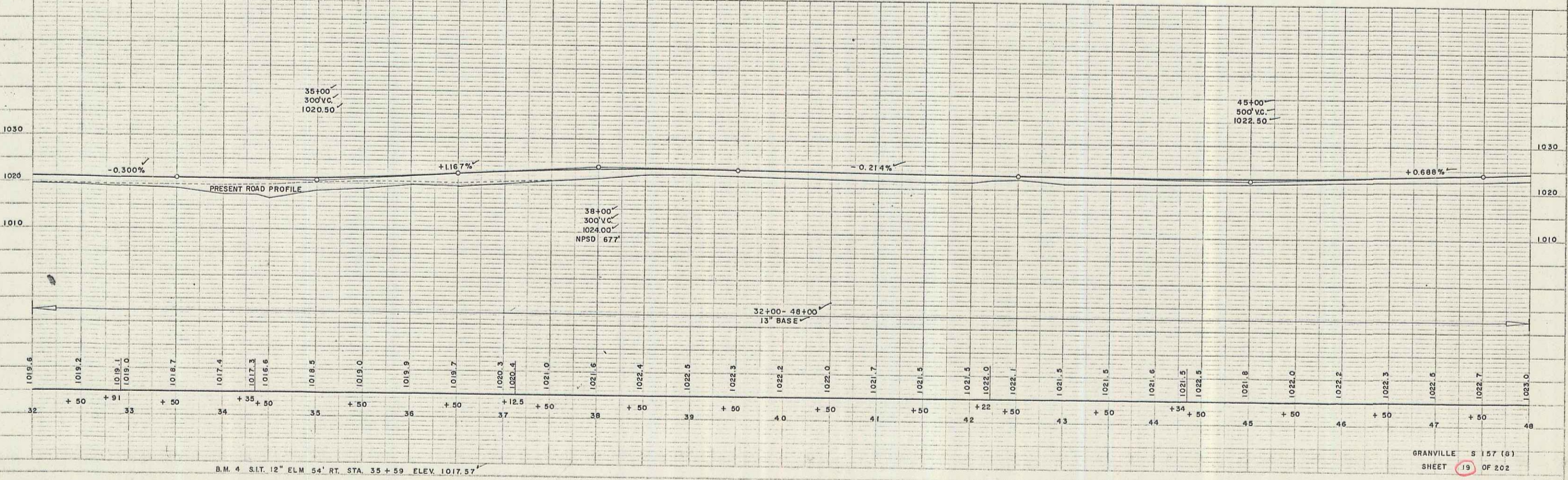
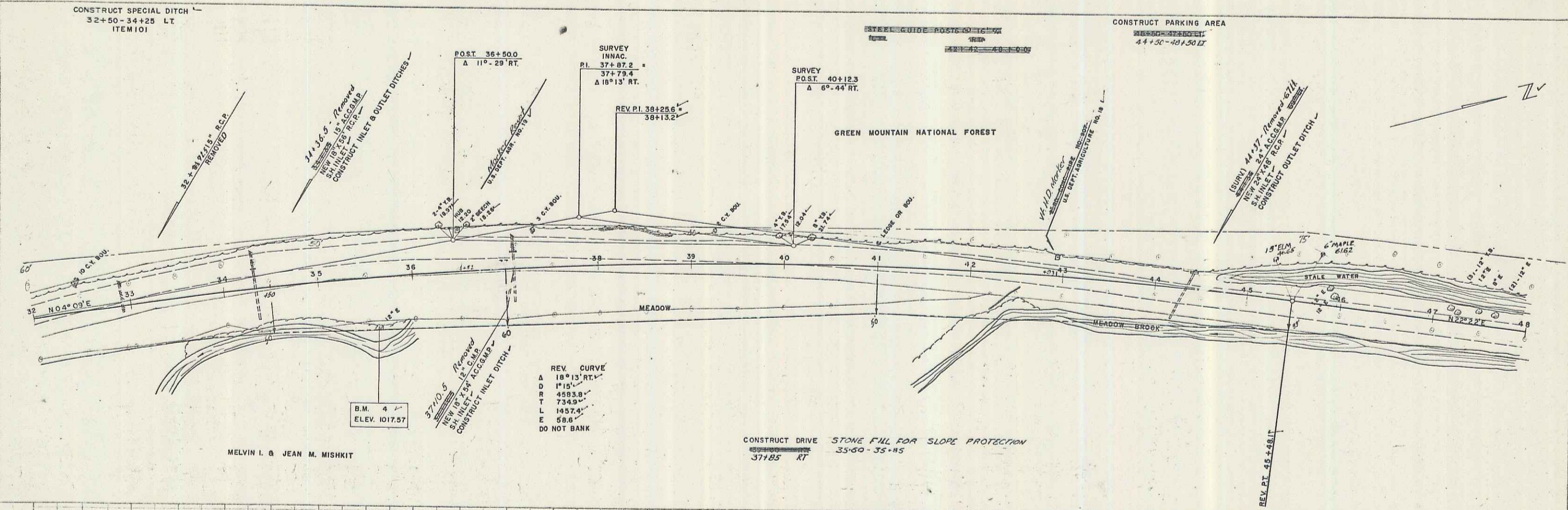
BM 2-A SLT 6" Spr. 40' Lt. Sta. 15+75 Elev. 1016.30
 BM 2-B SLT 14" BIRCH 66' Lt. Sta. 15+30 Elev. 1012.30

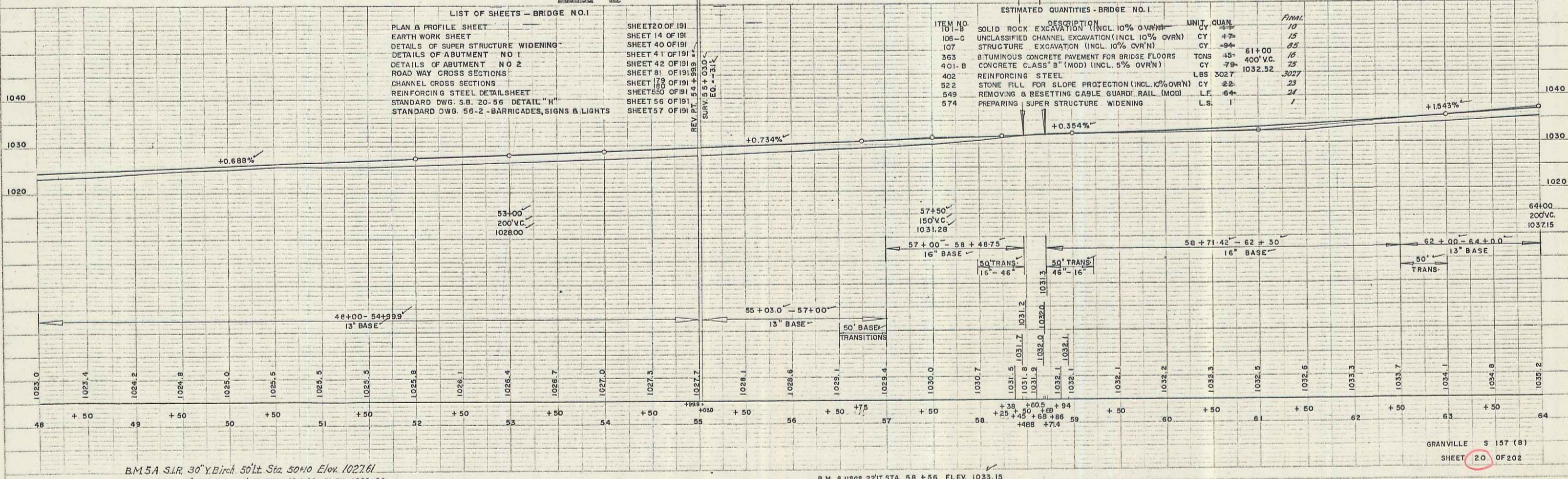
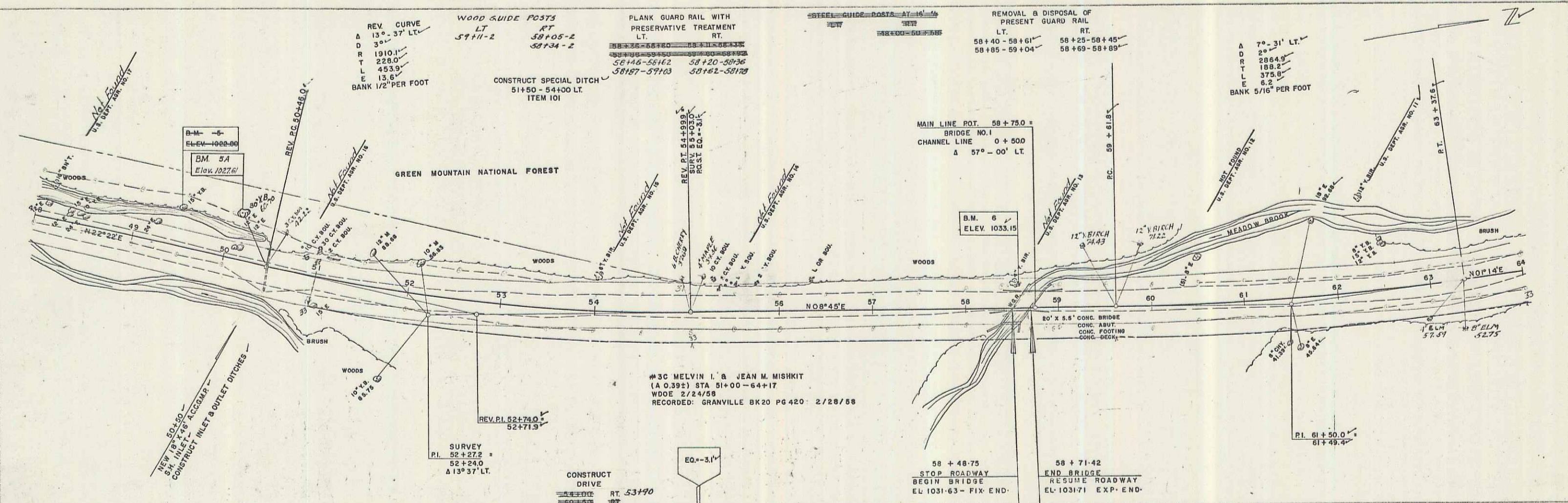
GRANVILLE S 157 (B)
 SHEET 17 OF 202

2

PLAN
 1:1
 11-56
 WEBSTER-MARTIN INC.

PROFILE
 1:1
 11-56
 WEBSTER-MARTIN INC.





PLAN
PALMER
WEBSTER - MARTIN INC. 11-56

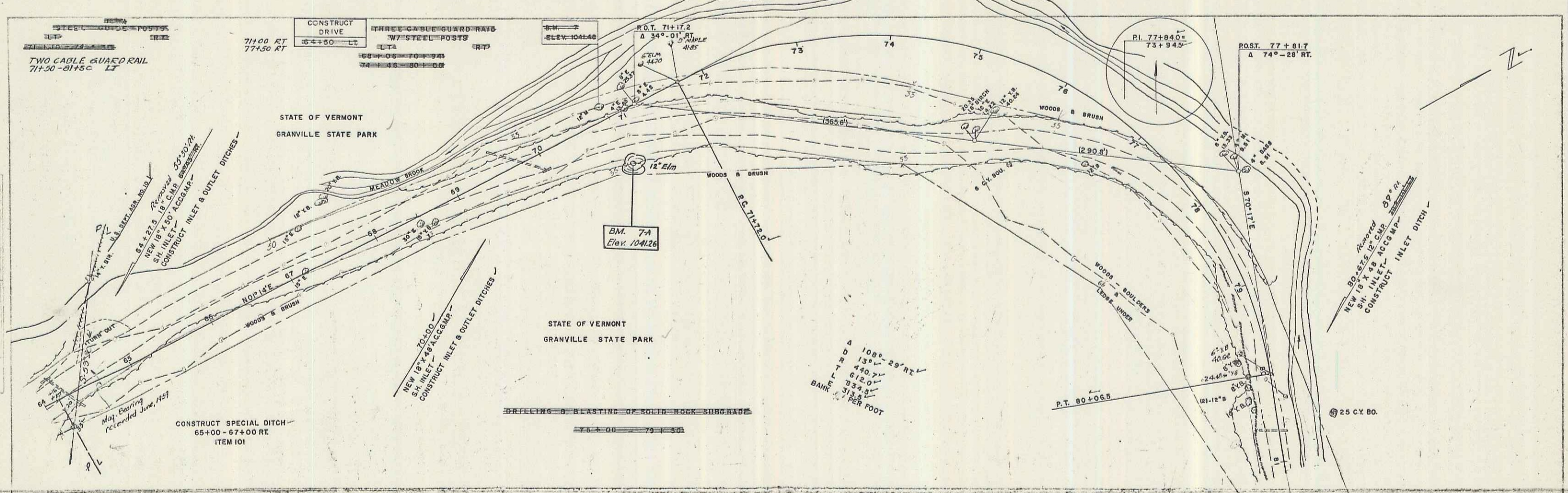
PROFILE
PALMER
WEBSTER - MARTIN INC. 11-56

B.M. 5A 30' Y. BIRCH 50' LT. STA. 50+10 ELEV. 1027.61
B.M. 6 22' Y. BIRCH 42' LT. STA. 58+56 ELEV. 1033.15

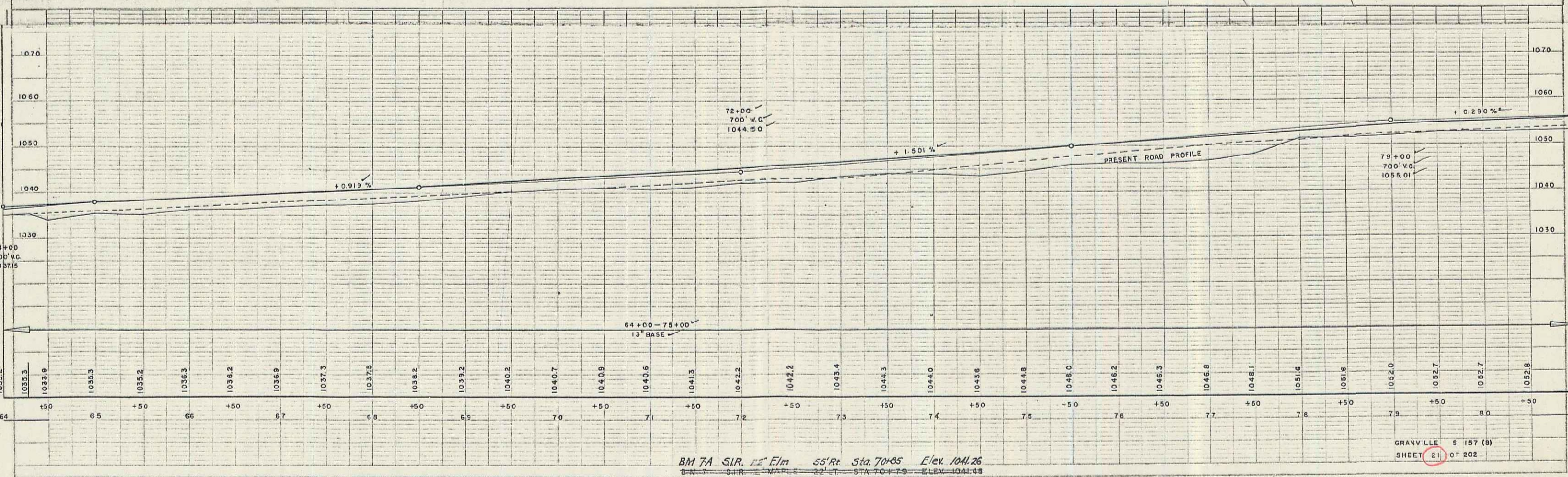
GRANVILLE S 157 (8)
SHEET 20 OF 202

5

PALMER 8-56
 WEBSTER-MARTIN INC. 11-56
 PROJECT NO. 100-100-100
 SHEET NO. 21 OF 202



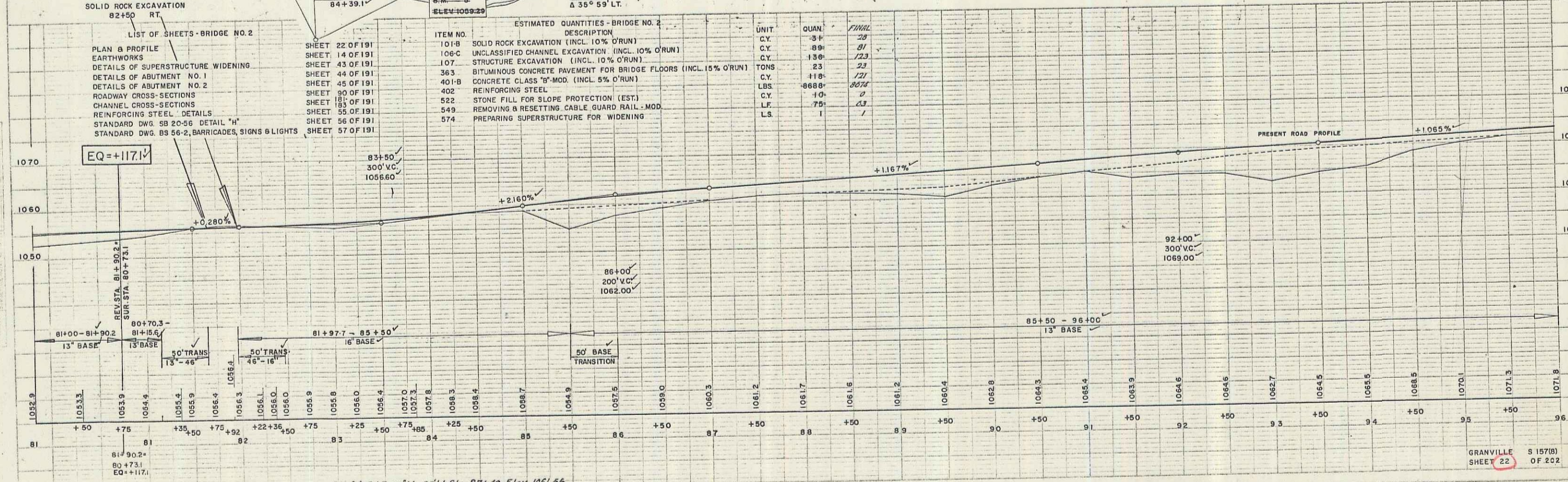
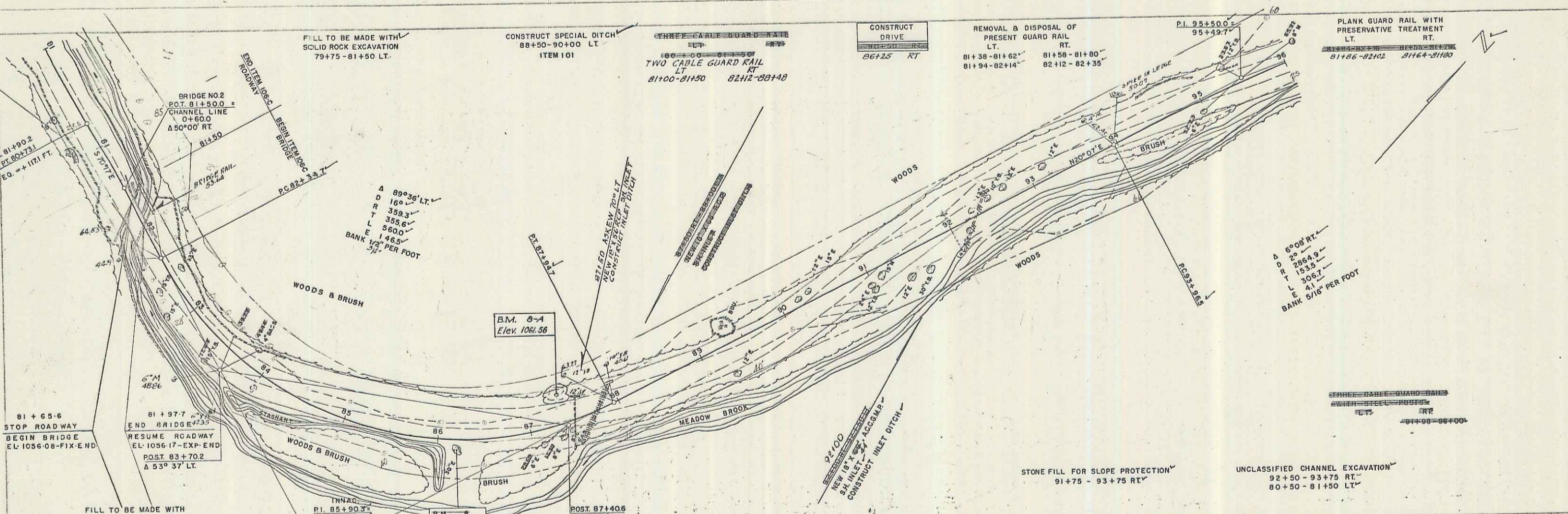
PALMER 8-56
 WEBSTER-MARTIN INC. 11-56
 PROFILE
 100-100-100



BM 7A S.R. Elm 55' Rt. Sta. 70+05 Elev. 1041.26
 8-56 11-56
 GRANVILLE S 157 (B)
 SHEET 21 OF 202

REV. STA. 81+90.2
 SUB. 12-80-731
 E.O. = +1171 FT.

REV. STA. 81+90.2
 SUB. 12-80-731
 E.O. = +1171 FT.



LIST OF SHEETS - BRIDGE NO. 2

PLAN & PROFILE	SHEET 22 OF 191
EARTHWORKS	SHEET 14 OF 191
DETAILS OF SUPERSTRUCTURE WIDENING	SHEET 43 OF 191
DETAILS OF ABUTMENT NO. 1	SHEET 44 OF 191
DETAILS OF ABUTMENT NO. 2	SHEET 45 OF 191
ROADWAY CROSS-SECTIONS	SHEET 90 OF 191
CHANNEL CROSS-SECTIONS	SHEET 181 OF 191
REINFORCING STEEL DETAILS	SHEET 55 OF 191
STANDARD DWG. 88 20-56 DETAIL "H"	SHEET 56 OF 191
STANDARD DWG. 88 56-2, BARRICADES, SIGNS & LIGHTS	SHEET 57 OF 191

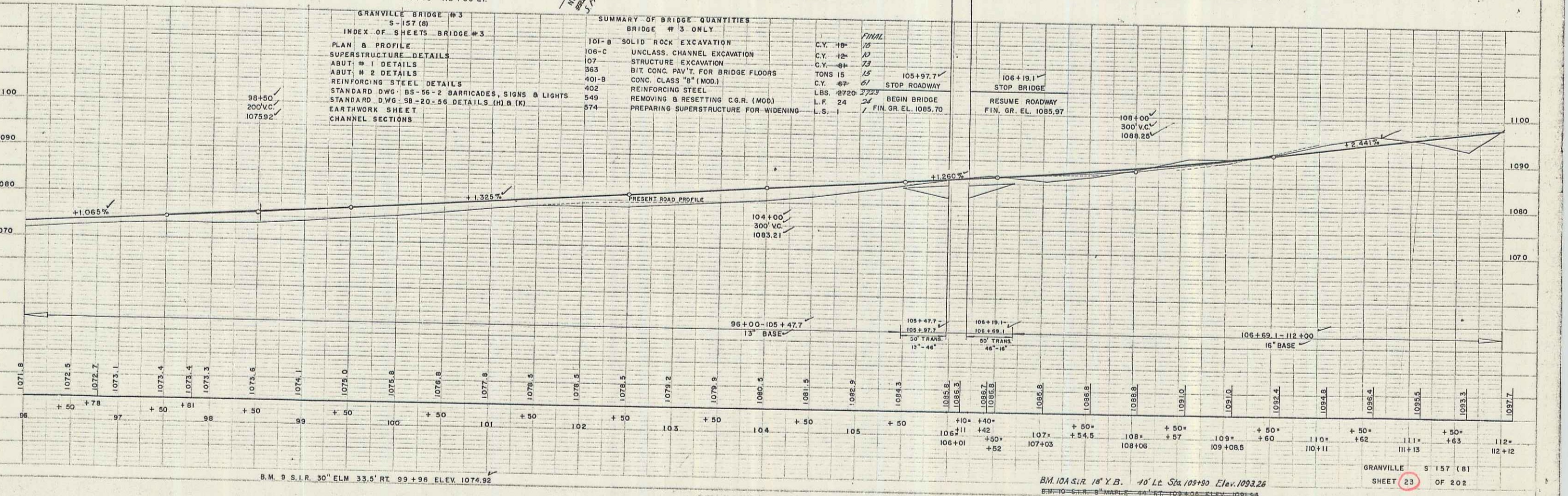
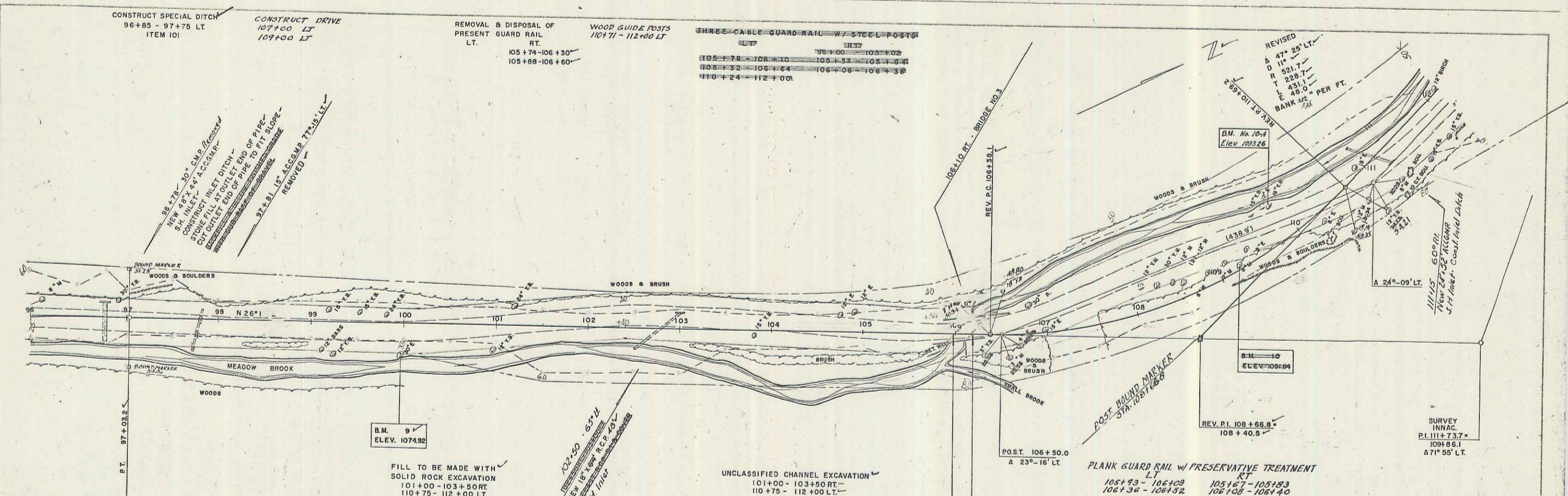
ESTIMATED QUANTITIES - BRIDGE NO. 2

ITEM NO.	DESCRIPTION	UNIT	QUAN.	FINAL
101-B	SOLID ROCK EXCAVATION (INCL. 10% O'RUN)	CY	84	81
106-C	UNCLASSIFIED CHANNEL EXCAVATION (INCL. 10% O'RUN)	CY	130	123
107	STRUCTURE EXCAVATION (INCL. 10% O'RUN)	TONS	23	23
363	BITUMINOUS CONCRETE PAVEMENT FOR BRIDGE FLOORS (INCL. 15% O'RUN)	CY	118	121
401-B	CONCRETE CLASS "B" MOD. (INCL. 5% O'RUN)	LBS	8688	8624
402	REINFORCING STEEL	CY	10	0
522	STONE FILL FOR SLOPE PROTECTION (EST)	LF	75	0
549	REMOVING & RESETTING CABLE GUARD RAIL - MOD.	LS	1	1
574	PREPARING SUPERSTRUCTURE FOR WIDENING			

B.M. 0-1 S.I.R. 12" M. 35' Lt. Sta. 87+40 Elev. 1061.56
 B.M. 0-2 S.I.R. 30" ELM. 11' ST. STA. 86+20 Elev. 1059.29

PLAN
WEBSTER-MARTIN INC. 11-56

PLAN
WEBSTER-MARTIN INC. 11-56

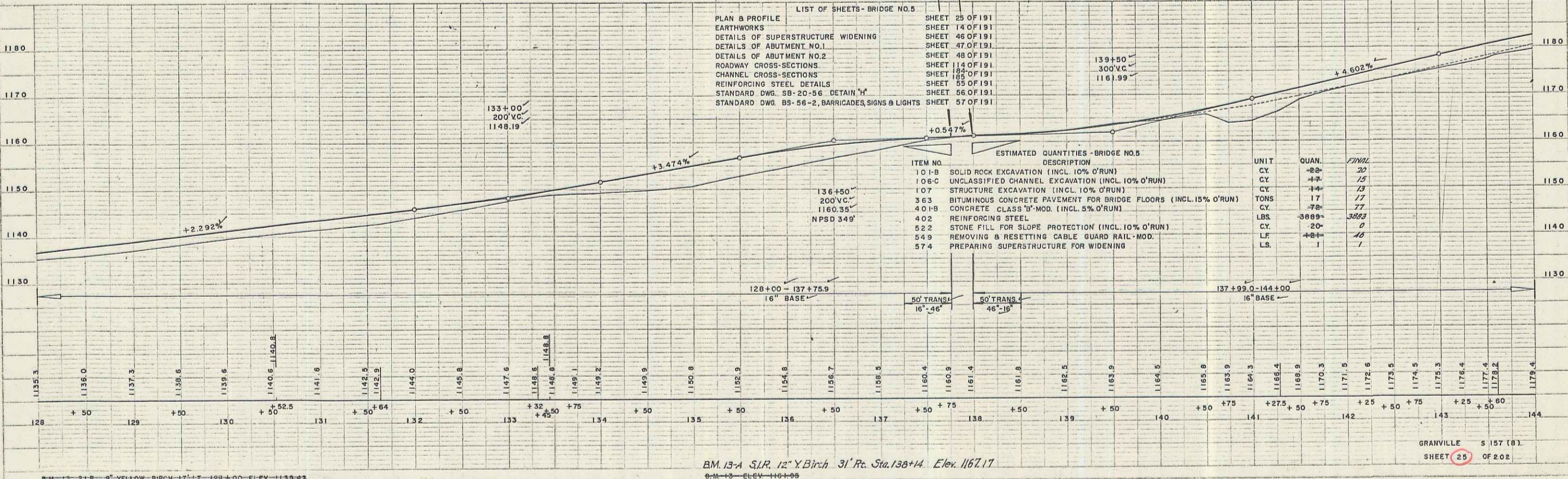
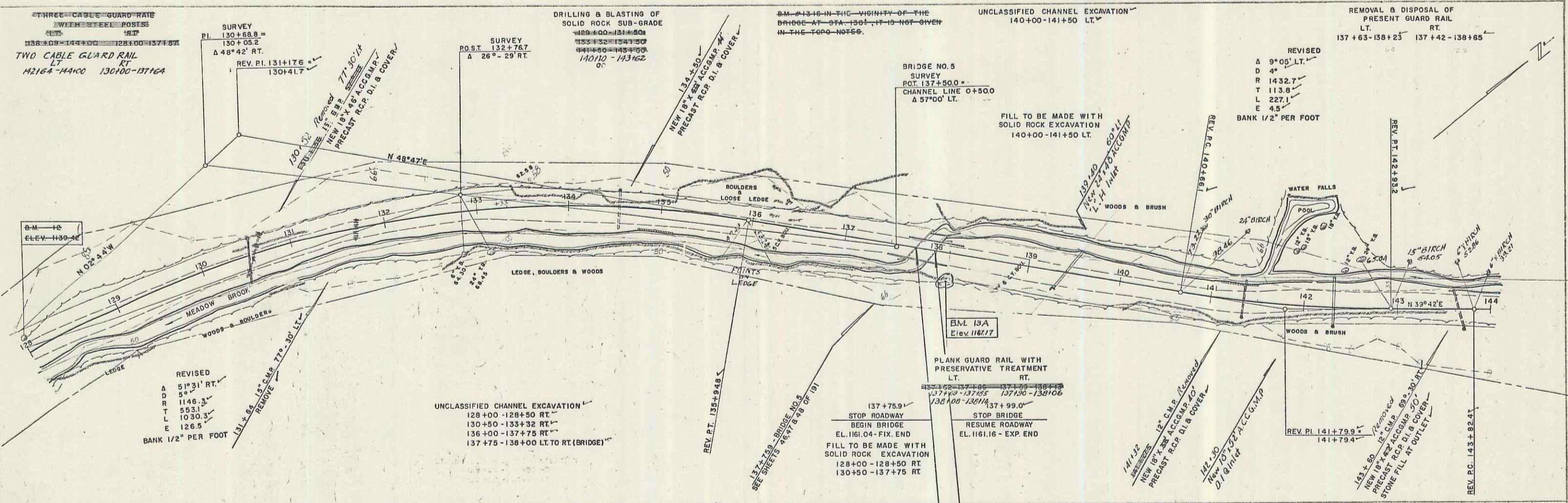


B.M. 9 S.I.R. 30' ELM 33.5' RT. 99+96 ELEV. 1074.92

B.M. 10A S.I.R. 15' Y.B. 15' Lt. Sta. 109+90 Elev. 1093.26

GRANVILLE S 157 (8)
SHEET 23 OF 202

8



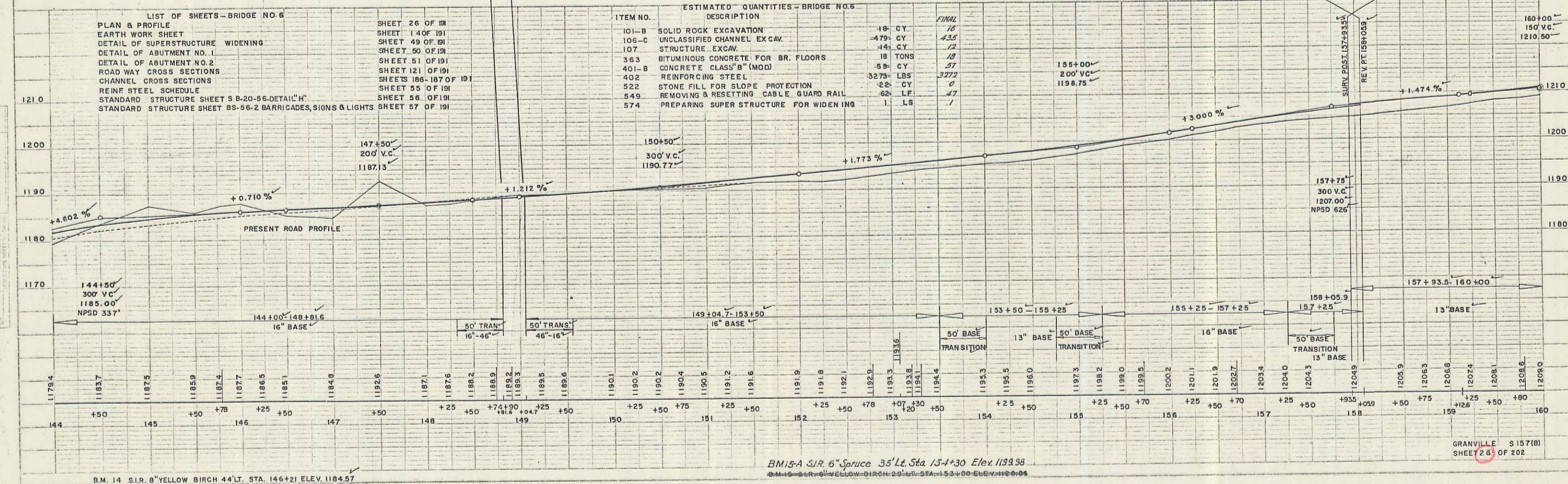
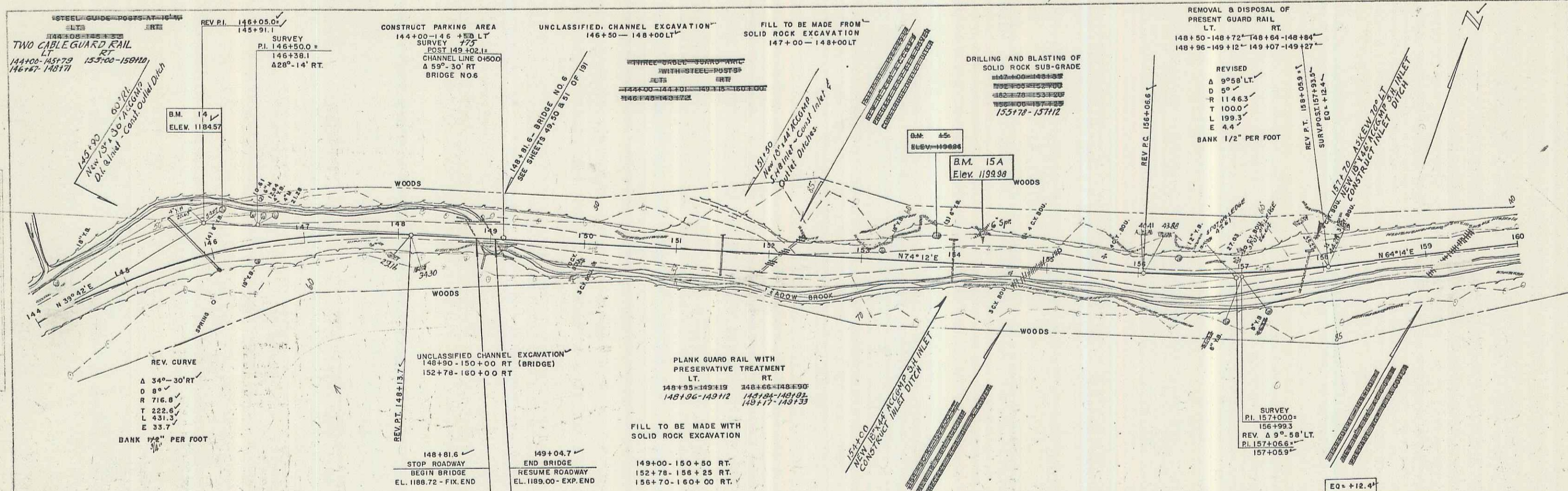
PALMER
WEBSTER-MARTIN INC. 11-56

PALMER
WEBSTER-MARTIN INC. 11-56

BM. 13-A S/R. 12" X Birch 31' Rt. Sta. 130+14 Elev. 1167.17
B.M. 13 - ELEV. 1167.17

GRANVILLE S 157 (8)
SHEET 25 OF 202

10



LIST OF SHEETS—BRIDGE NO. 6

PLAN & PROFILE	SHEET 26 OF 58
EARTH WORK SHEET	SHEET 140F OF 191
DETAIL OF SUPERSTRUCTURE WIDENING	SHEET 49 OF 58
DETAIL OF ABUTMENT NO. 1	SHEET 50 OF 58
DETAIL OF ABUTMENT NO. 2	SHEET 51 OF 58
ROADWAY CROSS SECTIONS	SHEET 121 OF 191
CHANNEL CROSS SECTIONS	SHEETS 186-187 OF 191
REINF. STEEL SCHEDULE	SHEET 55 OF 191
STANDARD STRUCTURE SHEET S B-20-56-DETAIL "H"	SHEET 56 OF 191
STANDARD STRUCTURE SHEET S B-36-2 BARRICADES, SIGNS & LIGHTS	SHEET 57 OF 191

ESTIMATED QUANTITIES—BRIDGE NO. 6

ITEM NO.	DESCRIPTION	QUANTITY	FINAL
101-B	SOLID ROCK EXCAVATION	49 CY	16
105-C	UNCLASSIFIED CHANNEL EXCAV.	479 CY	435
107	STRUCTURE EXCAV.	44 CY	12
363	BITUMINOUS CONCRETE FOR BR. FLOORS	18 TONS	18
401-B	CONCRETE CLASS "B" (MOD)	59 CY	57
402	REINFORCING STEEL	3275 LBS	3272
549	REMOVING & RESETTING CABLE GUARD RAIL	22 CY	0
574	PREPARING SUPER STRUCTURE FOR WIDENING	1 LS	1

8-56
1-56
PALMER WEBSTER-MARTIN, INC.
ENGINEERS

8-56
1-56
PALMER WEBSTER-MARTIN, INC.
ENGINEERS

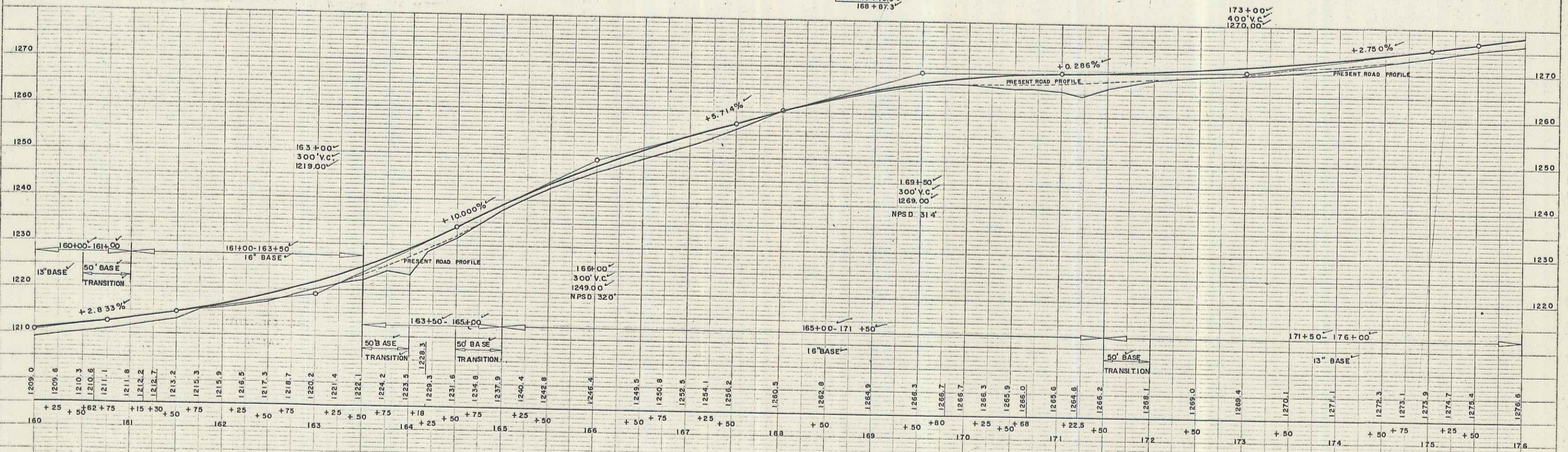
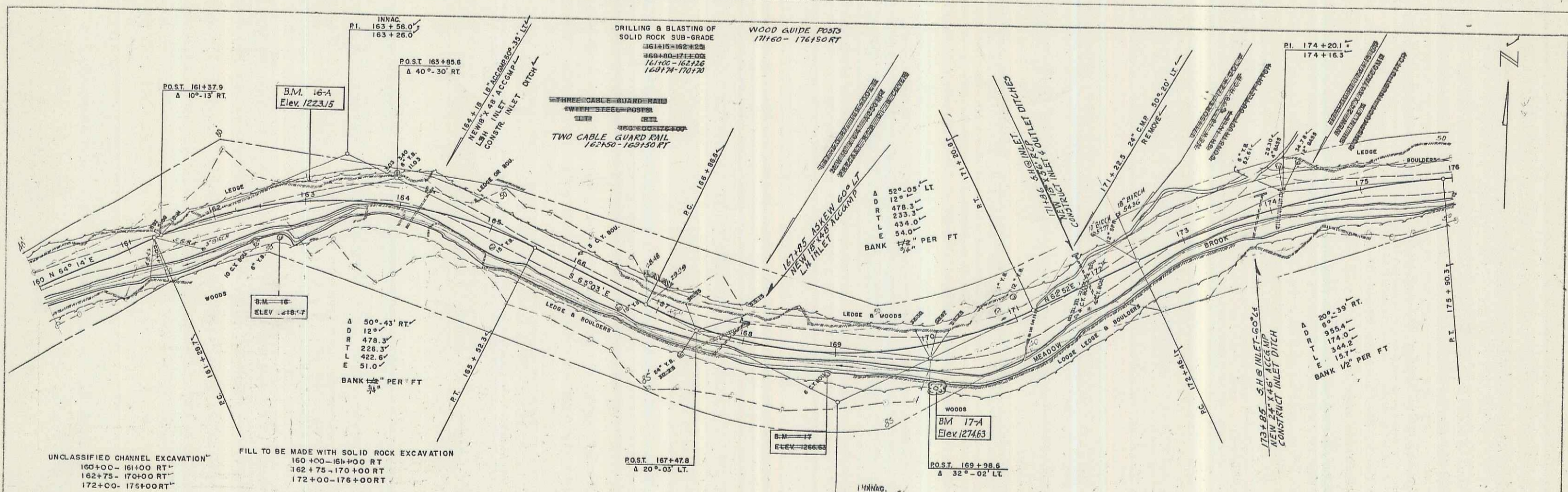
B.M. 14 S.R. 8" YELLOW BIRCH 44' LT. STA. 146+21 ELEV. 1184.57

B.M. 15A S.R. 6" Spruce 35' Lt. Sta. 154+30 ELEV. 1193.98
B.M. 15 S.R. 6" YELLOW BIRCH 29' LT. STA. 153+00 ELEV. 1190.94

GRANVILLE S 157(8)
SHEET 26 OF 202

PALMER
 WEBSTER-MARTIN INC. 11-56
 1000 WEST 10TH AVENUE
 DENVER, COLORADO 80202

PALMER
 WEBSTER-MARTIN INC. 11-56
 1000 WEST 10TH AVENUE
 DENVER, COLORADO 80202

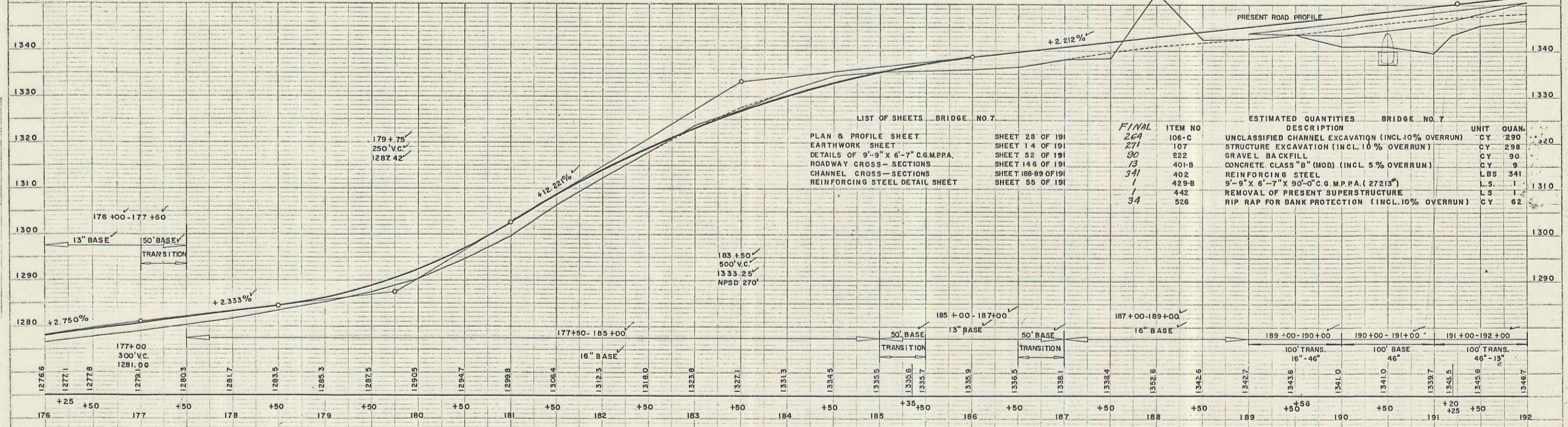
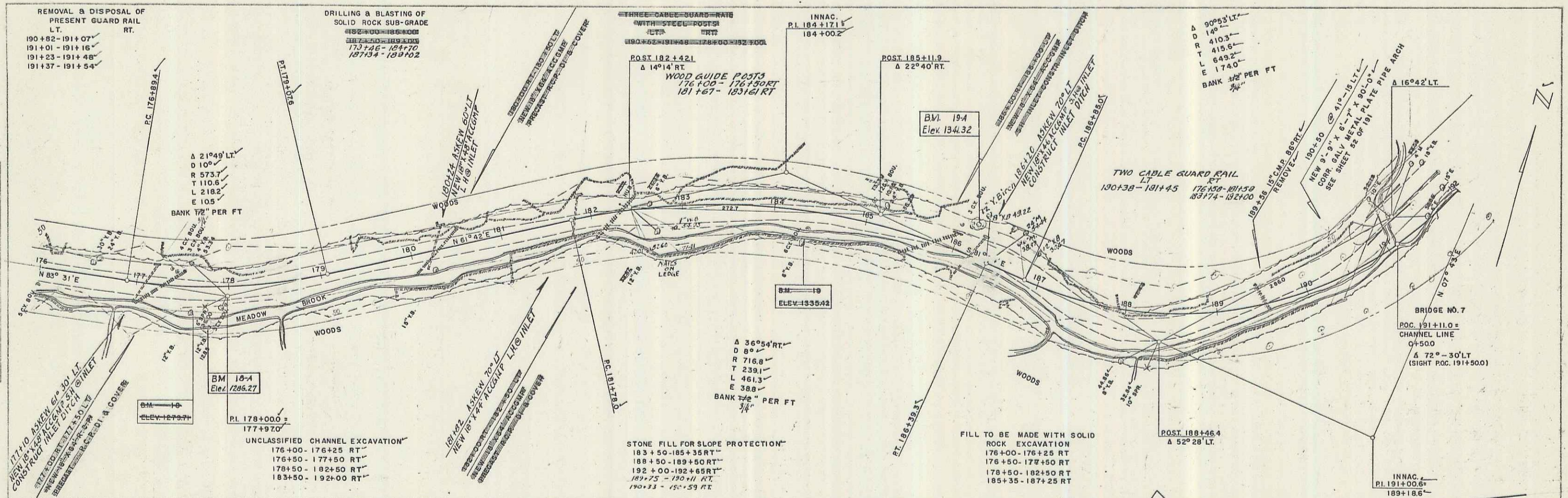


B.M. 16-A Spot on ledge 20' Lt. 163+05 Elev. 1223.15
 B.M. 16-1 S.P. 8" YELLOW BIRCH 30' RT. 162+61 Elev. 1218.97

B.M. 17-A S.P. 15" Y BIRCH 58' Rt. Sta. 170+00 Elev. 1274.63
 B.M. 17-1 S.P. ON BOULDER 25' S. 167+95 Elev. 1268.85

PLAN
 WESTER-MARTIN, INC.
 11-86

PROFILE
 WESTER-MARTIN, INC.
 11-86



LIST OF SHEETS BRIDGE NO. 7

DESCRIPTION	SHEET NO.	ITEM NO.	ESTIMATED QUANTITIES	BRIDGE NO. 7	UNIT	QUAN.
PLAN & PROFILE SHEET	SHEET 28 OF 191	264	UNCLASSIFIED CHANNEL EXCAVATION (INCL. 10% OVERRUN)	108-C	CY	290
EARTHWORK SHEET	SHEET 14 OF 191	271	STRUCTURE EXCAVATION (INCL. 10% OVERRUN)	107	CY	298
DETAILS OF 9'-9" X 6'-7" C.G.M.P.P.A.	SHEET 52 OF 191	00	GRAVEL BACKFILL	222	CY	90
ROADWAY CROSS-SECTIONS	SHEET 148 OF 191	13	CONCRETE CLASS "B" (MOD) (INCL. 5% OVERRUN)	401-B	CY	9
CHANNEL CROSS-SECTIONS	SHEET 188-89 OF 191	402	REINFORCING STEEL	402-B	LBS	341
REINFORCING STEEL DETAIL SHEET	SHEET 55 OF 191	1	REMOVAL OF PRESENT SUPERSTRUCTURE	442	LS	1
		34	RIP RAP FOR BANK PROTECTION (INCL. 10% OVERRUN)	526	CY	62

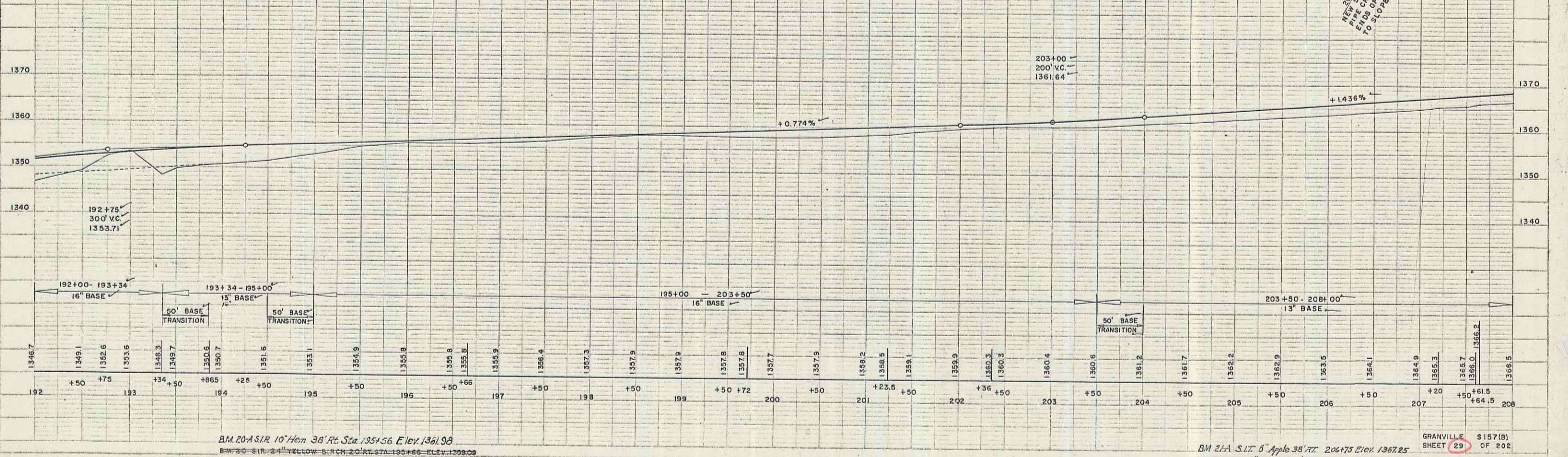
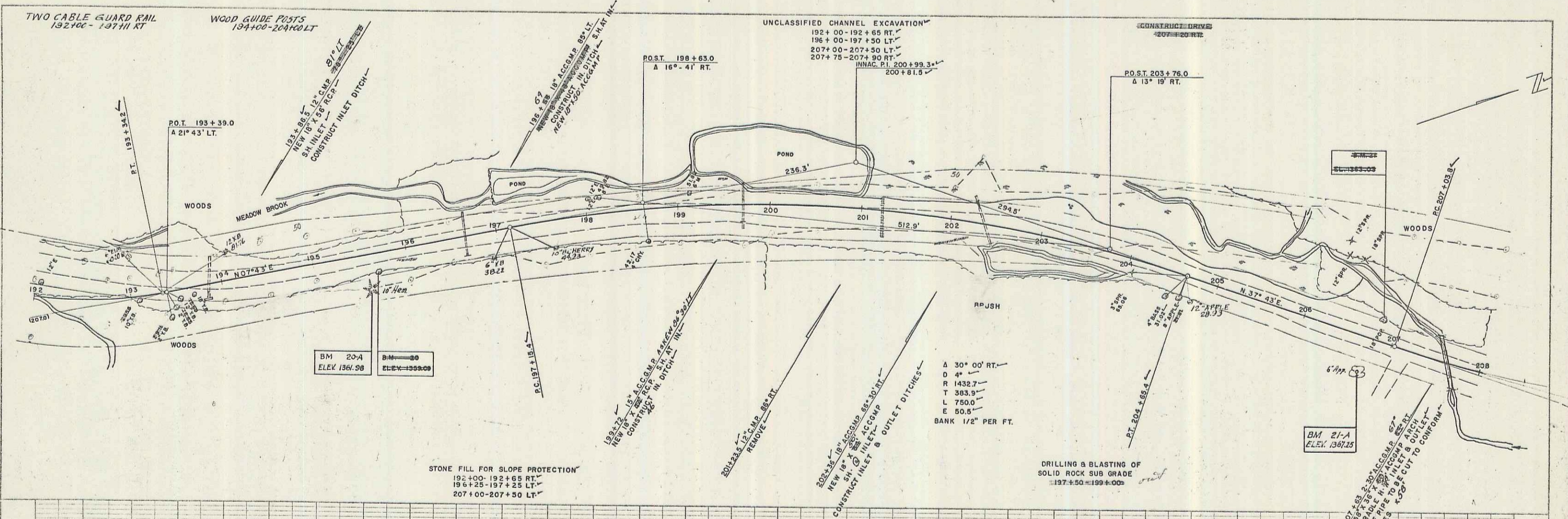
BM. 18-A SUR. 12" Yellow Birch 44 Rt. Sta. 177+80 Elev. 1286.27
 BM. 16-SUR-12" Yellow Birch 28 Rt. Sta. 177+69.5 Elev. 1279.71

BM. 19-A SUR. 12" Yellow Birch 35 Lt. Sta. 185+13 Elev. 134.32
 BM. 19-SUR-12" Yellow Birch 34 Rt. Sta. 184+32 Elev. 1335.42

GRANVILLE S157(8)
 SHEET 28 OF 202

PLAN
 WESTER, MARTIN INC. 11-56
 100 LINDSEY ST. W. WINDSOR, ONT. L9R 4K1
 TEL. 598-1111

PROFILE
 PALMER 8-56
 WESTER, MARTIN INC. 11-56
 100 LINDSEY ST. W. WINDSOR, ONT. L9R 4K1
 TEL. 598-1111



BM 20-A SIR 10' Hem 38' Rt Sta 195+56 Elev 1361.98
 BM 20-B SIR 2" Yellow Birch 20' Rt Sta 195+66 Elev 1359.09

BM 21-A SIR 6' Apple 38' Rt Sta 206+75 Elev 1367.25
 GRANVILLE \$157(B)
 SHEET 29 OF 202

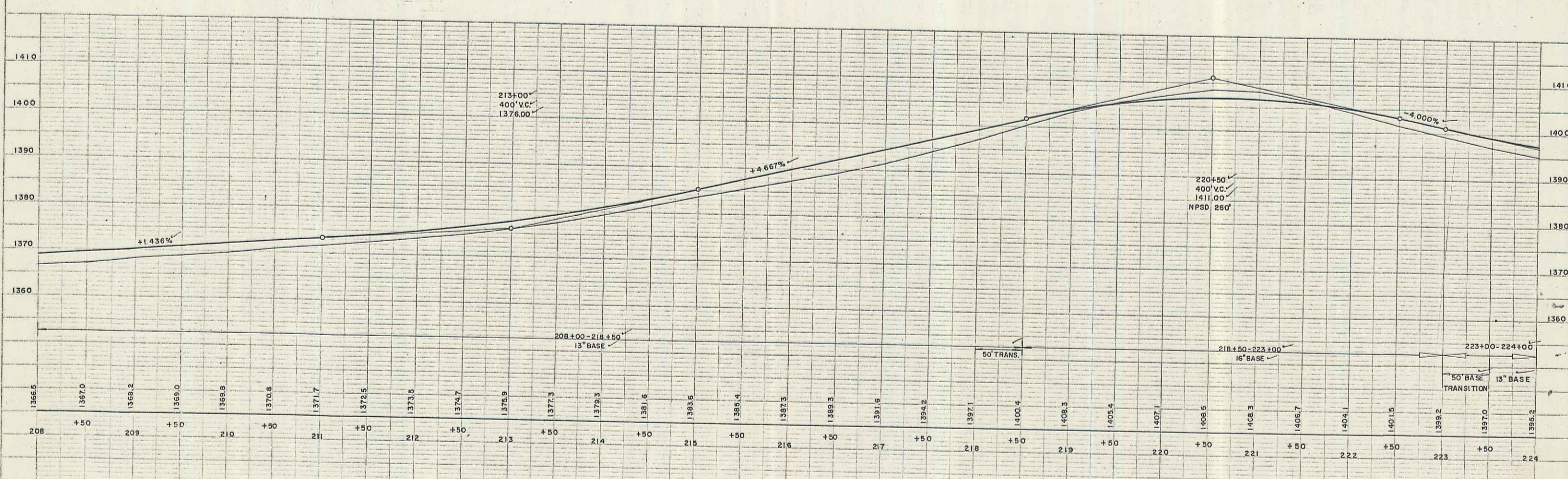
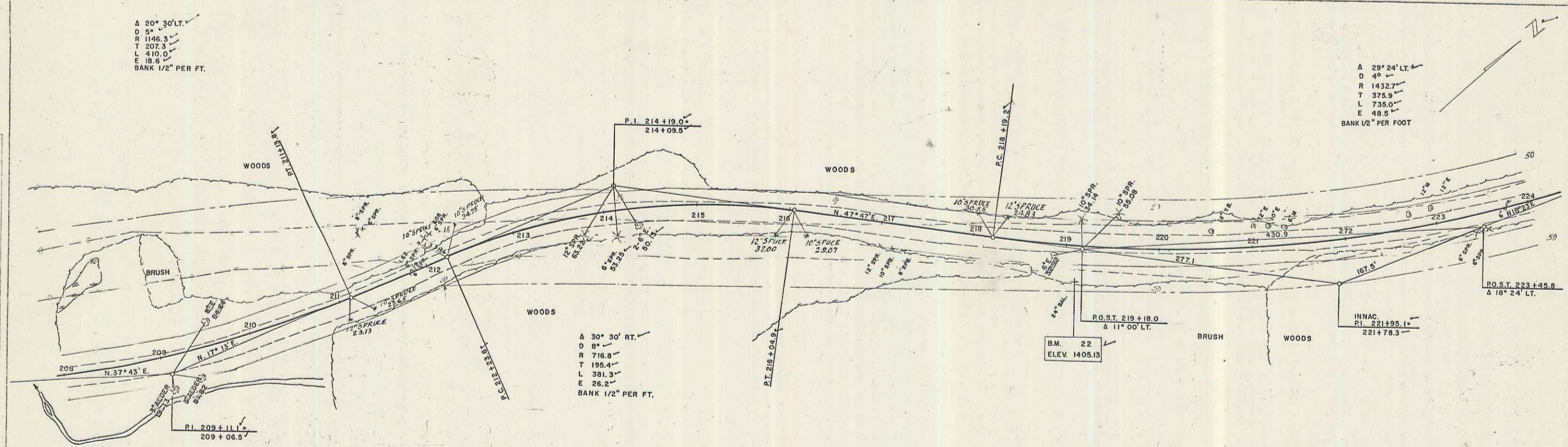
A 20° 30' LT.
 D 5'
 R 1146.3
 T 207.3
 L 410.0
 E 18.6
 BANK 1/2" PER FT.

A 29° 24' LT.
 D 4'
 R 1432.7
 T 373.9
 L 735.0
 E 48.5
 BANK 1/2" PER FOOT

A 30° 30' RT.
 D 8'
 R 716.8
 T 195.4
 L 381.3
 E 26.2
 BANK 1/2" PER FT.

PLAN
 PALMER WEBSTER-MARTIN, INC.
 11-58

PROFILE
 PALMER WEBSTER-MARTIN, INC.
 11-58

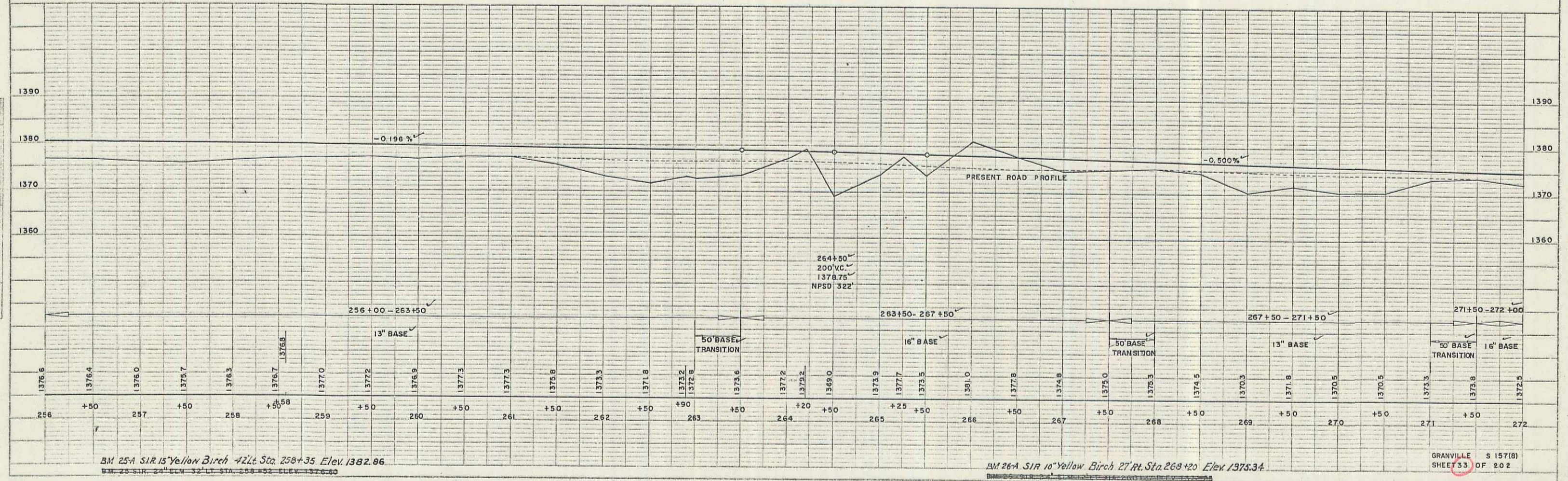
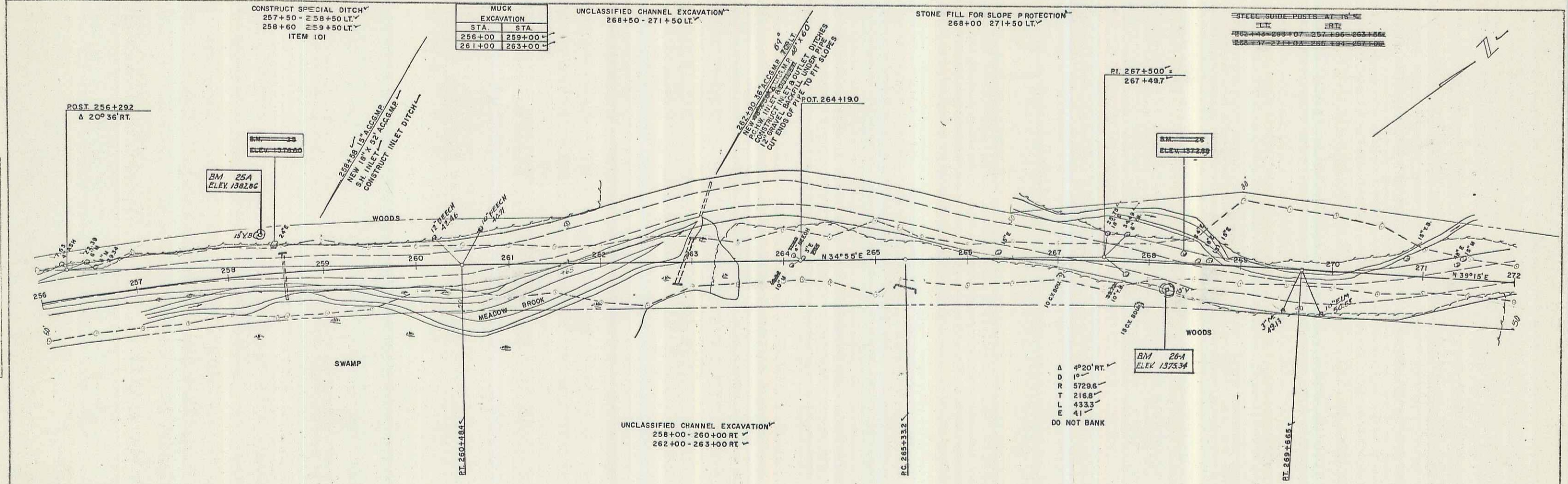


GRANVILLE S157 (B)
 SHEET 30 OF 202

15

PLAN
 PALMER
 WEBSTER-MARTIN, INC.
 11-56
 15' X 11"

PROFILE
 PALMER
 WEBSTER-MARTIN, INC.
 11-56
 15' X 11"



BM 25A S/R 15 Yellow Birch 42 Lt. Sta. 258+35 Elev. 1382.86
 B.M. 25 S/R 24 Yellow Birch 32 Lt. Sta. 258+52 Elev. 1376.80

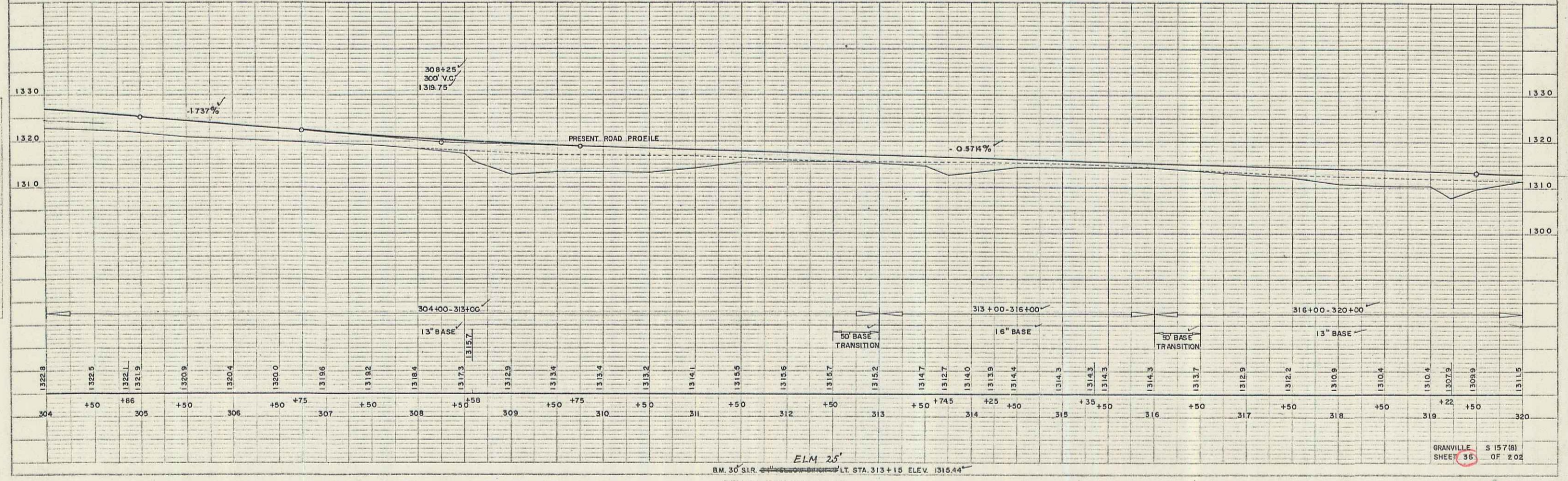
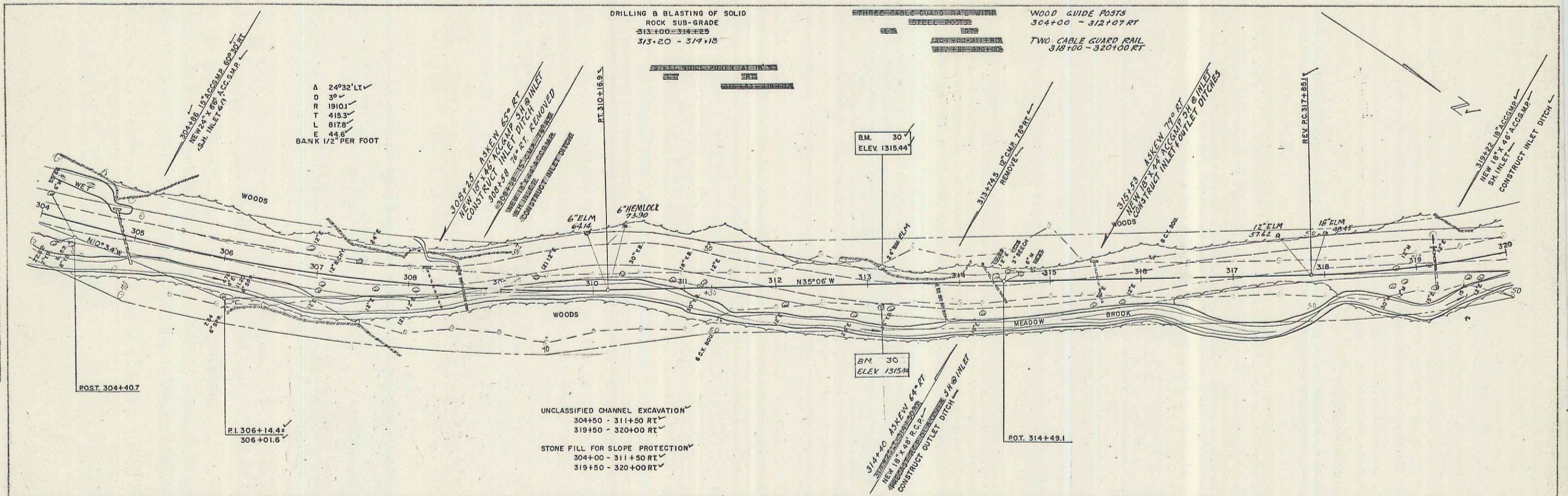
BM 26A S/R 16 Yellow Birch 27 Rt. Sta. 269+20 Elev. 1375.34

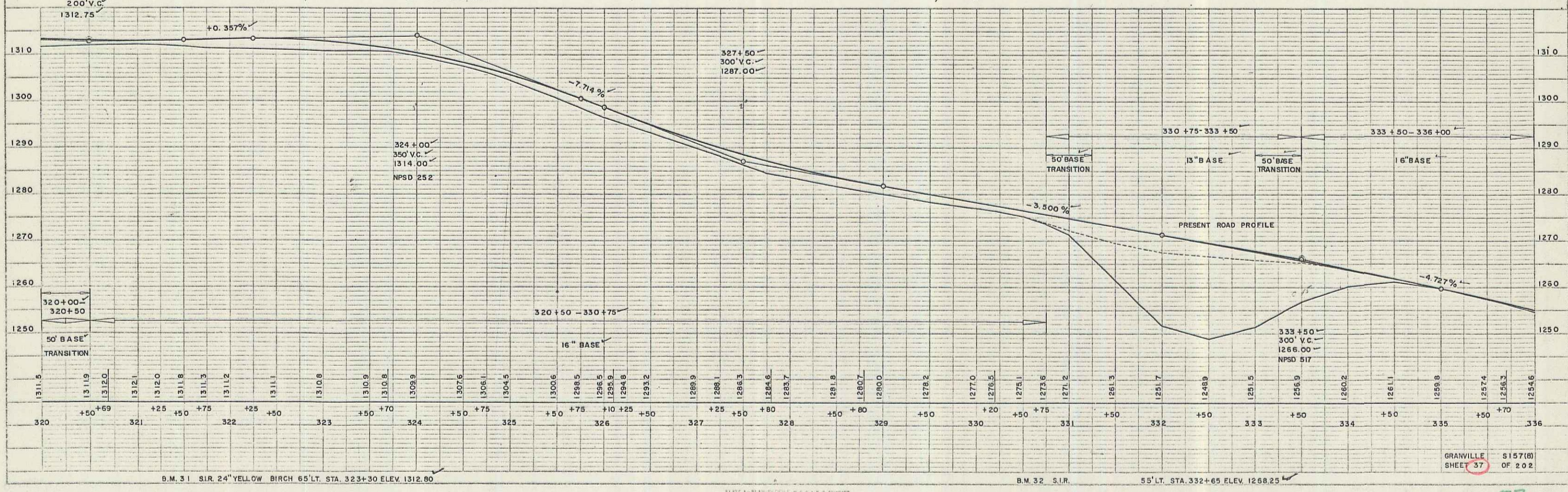
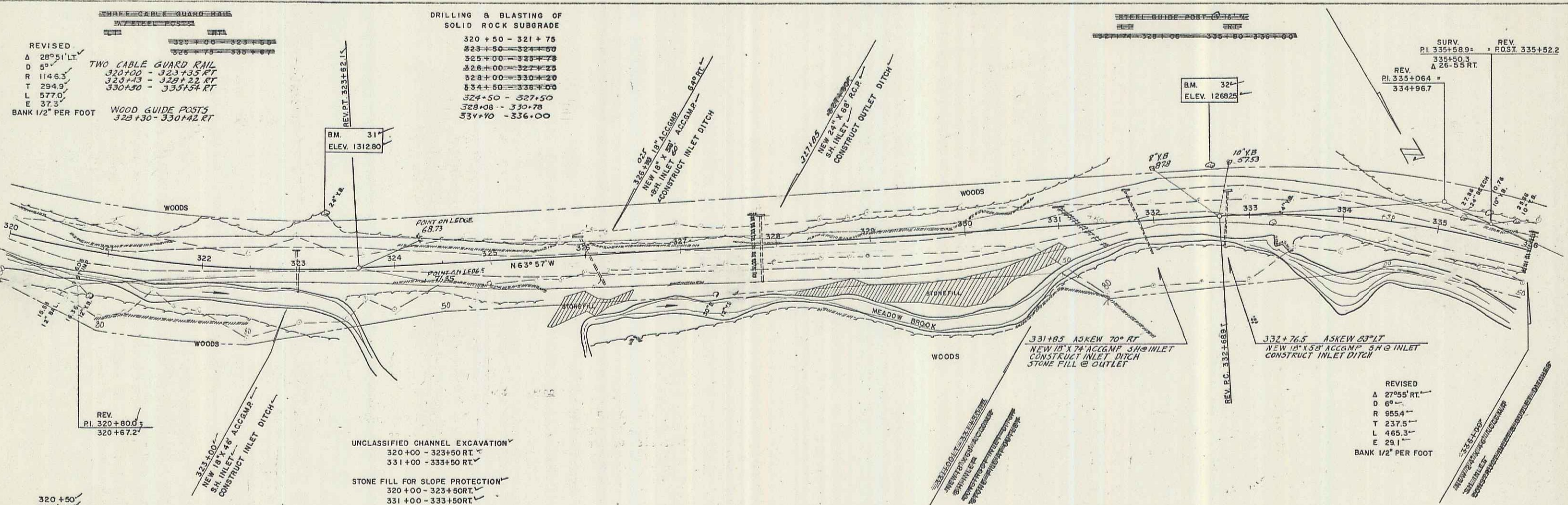
GRANVILLE S 157(8)
 SHEET 53 OF 202

PLATE 1 - PLAN - PROFILE
 REPORT & RECORD NO. NEW YORK
 P.E. NO. 1248-10

PLAN
 PALMER WESTER-MARTIN, INC. 11-56
 PROJECT NO. 11-56
 SHEET NO. 36 OF 202
 DATE 11-56
 DRAWN BY J.W. [unclear]
 CHECKED BY [unclear]

PROFILE
 PALMER WESTER-MARTIN, INC. 11-56
 PROJECT NO. 11-56
 SHEET NO. 36 OF 202
 DATE 11-56
 DRAWN BY J.W. [unclear]
 CHECKED BY [unclear]





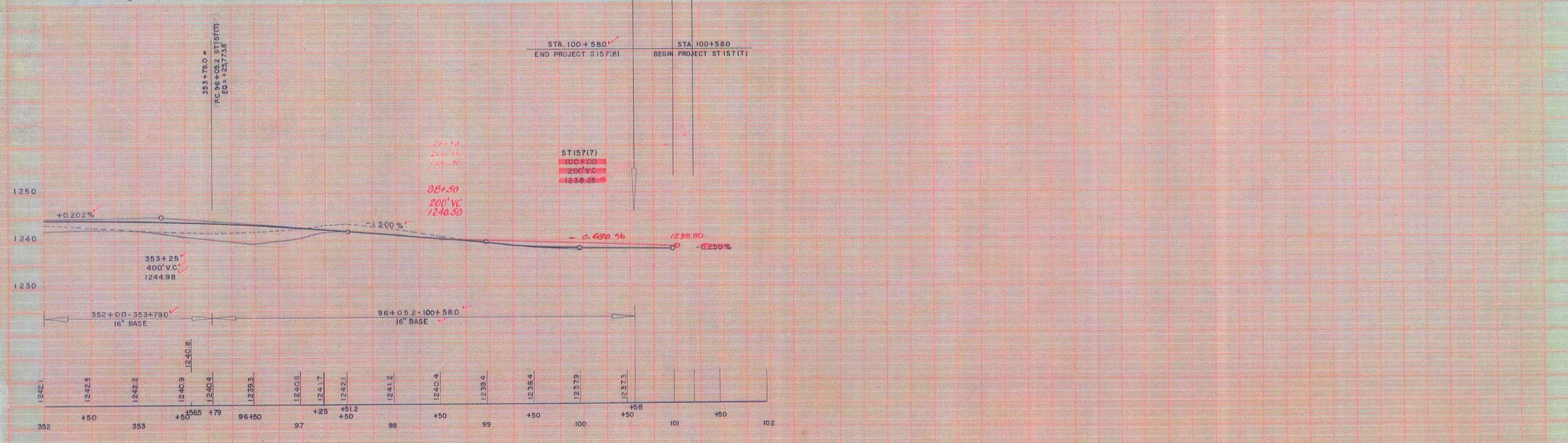
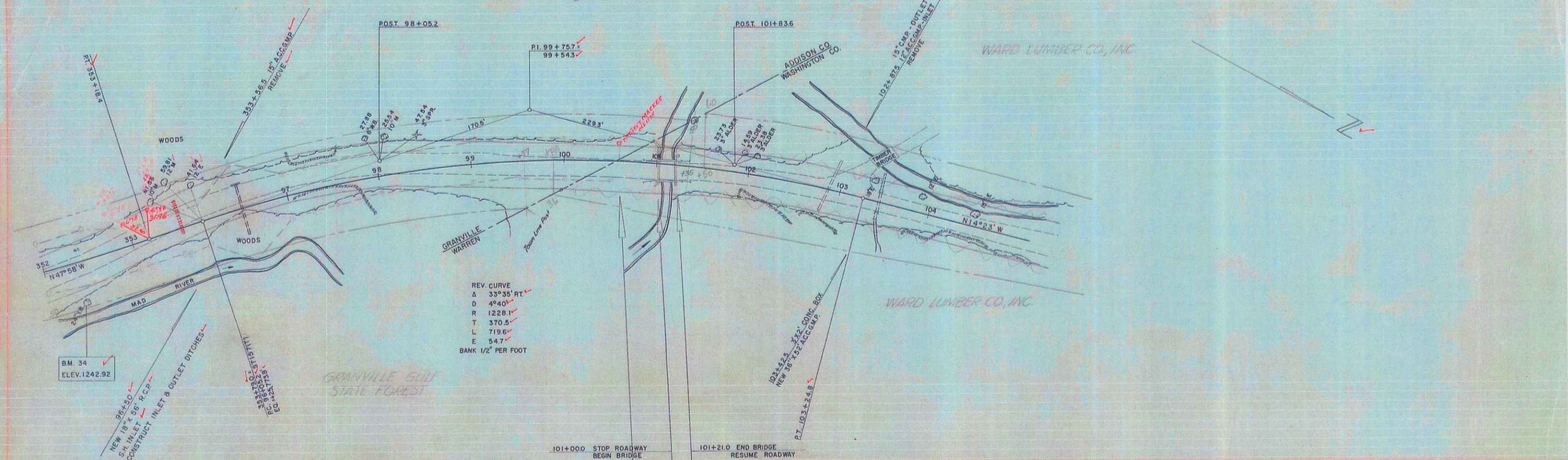
PALMER
 ASSISTANT ENGINEER
 11-58
 11-58
 11-58

PALMER
 ASSISTANT ENGINEER
 11-58
 11-58
 11-58

GRANVILLE GULF STATE FOREST

DRILLING & BLASTING OF SOLID ROCK SUBGRADE 97+00 - 98+00

STEEL GUIDE POSTS FOR DATA



B.M. 34 S.I.R. 24" YELLOW BIRCH 45.5' RT. STA. 352+34 ELEV. 1242.92

GRANVILLE S 157(B) SHEET 39 OF 202