

FED. ROAD DIV. NO.	STATE	PROJ. NO.	SHEET NO.	TOTAL SHEETS
1	VT.	S 157 (7)	1	23

- INDEX OF SHEETS**
- SHEET NO. 1 TITLE PAGE
  - 2 TYPICAL CROSS-SECTION OF IMPROVEMENT DOUBLE TACK COAT OF REFINED TAR WITH SAND-GRAVEL SEAL, 17CM 311-A
  - 3 BANKING AND WIDENING TABLES
  - 4 QUANTITY SHEET (ITEMS)
  - 5 EARTHWORK SHEET
  - 6-7 PLAN AND PROFILE SHEETS
  - 8 DETAILS OF ABUTMENT NO 1
  - 9 DETAILS OF ABUTMENT NO 2
  - 10 DETAILS OF REINFORCING STEEL
  - 11 STANDARD DRAWING S 18-30-24 (DRAW 15" X 30")
  - 12 STANDARD DRAWING S 20-1 (STANDARD CABLE GUARD RAIL)
  - 13 STANDARD DRAWING S 20-1 (STANDARD CABLE GUARD RAIL)
  - 14 STANDARD STRUCTURE SHEET S 11 (BARRICADES, SIGNS & LIGHTS)
  - 15 CONSTRUCTION DETAILS (DRAINAGE AND MARKERS)
  - 16 CONSTRUCTION DETAILS CD1 (DITCHES)
  - 17 STANDARD STRUCTURE SHEET S 40 (BARRICADES, SIGNS & LIGHTS)
  - 18 STANDARD STRUCTURE SHEET S 45-45 (TWC CABLE GUARD RAIL)
  - 19-21 CROSS-SECTIONS
  - 22-23 CHANNEL SECTIONS
- STANDARD STRUCTURE SHEET APPROVED BY THE CHIEF ENGINEER, VERMONT STATE DEPARTMENT OF HIGHWAYS - S 40 JUNE 10, 1950

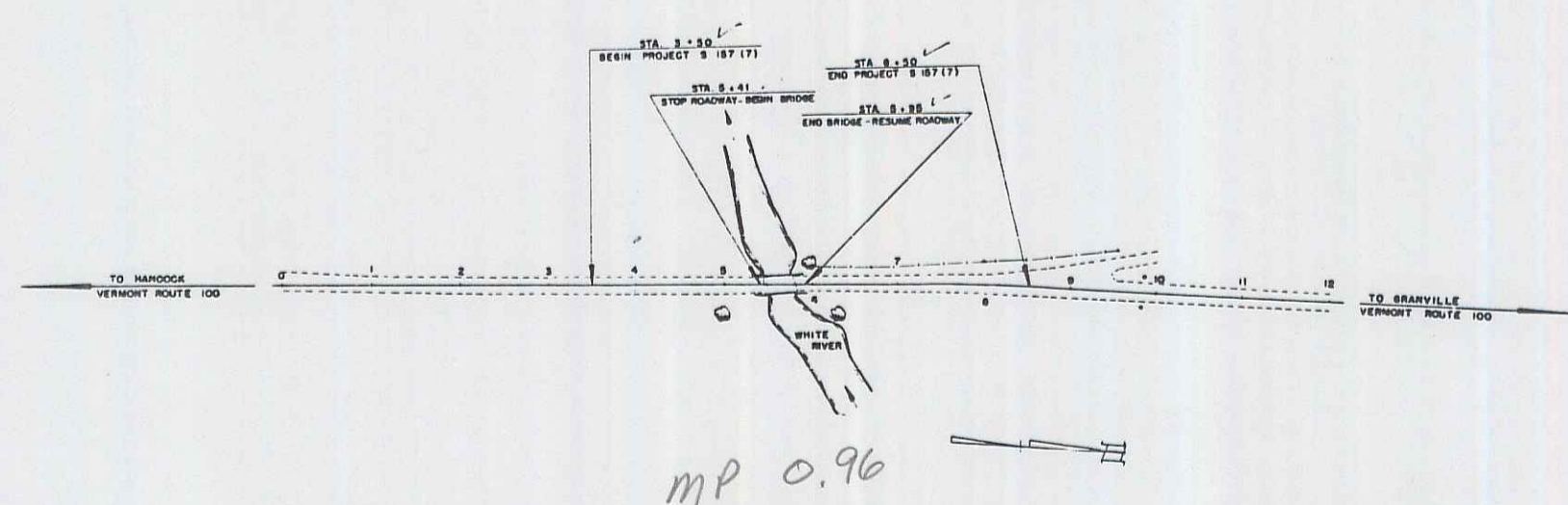
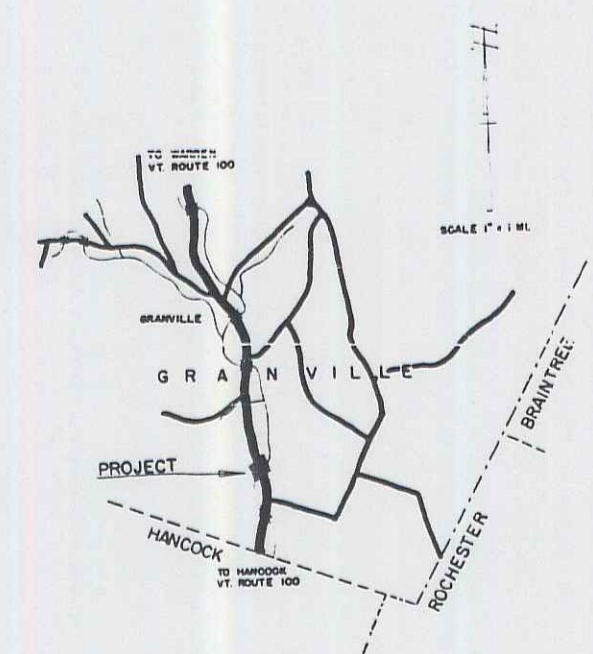
**STATE OF VERMONT  
STATE HIGHWAY DEPARTMENT**

**PLAN AND PROFILE OF PROPOSED  
STATE HIGHWAY**

SECONDARY PROJECT  
**TOWN OF GRANVILLE**  
COUNTY OF ADDISON  
**VERMONT ROUTE 100**  
HANCOCK-WARREN ROAD

BEGINNING AT A POINT 1873 FEET NORTH OF THE HANCOCK-GRANVILLE TOWN LINE AND EXTENDING NORTHERLY 500 FEET

LENGTH OF ROADWAY 446 FEET = 0.085 MI.  
LENGTH OF BRIDGE 54 FEET = 0.010 MI.  
LENGTH OF PROJECT 500 FEET = 0.095 MI.



RIGHT-OF-WAY DIVISION  
TOWN FILE  
PERPETUAL  
Town of \_\_\_\_\_  
(To Be Returned To R.O.W. Division)

APPROVED: *Dec. 17, 1952*  
*H. S. August*  
CHIEF ENGINEER

SUBMITTED BY ORDER OF THE STATE HIGHWAY BOARD  
*APR 100R672*

M.P. 0.91 to 1.01

SUBJECT: Granville  
DATE: 5-15-52  
FILE: Conc. 1'-Beam  
CONTRACTOR: A.G. Anderson  
DRAWN BY: E.H. 100

GROUND ELEVATION..... DATUM..... LINE.....

GRADE ELEVATION..... DATUM..... LINE.....

**CURVE DATA**

DEFLECTION ANGLE..... Δ

DEGREE OF CURVE..... D

RADIUS OF CURVE..... R

TANGENT DISTANCE..... T

LENGTH OF CURVE..... L

EXTERNAL DISTANCE..... E

POINT OF INTERSECTION..... P. I.

POINT OF CURVE..... P. C.

POINT OF TANGENT..... P. T.

**SCALES**

TITLE 1" = 100'

TYPICAL 1" = 20'

PLAN 1" = 20'

PROFILE HORIZONTAL 1" = 20'

PROFILE VERTICAL 1" = 10'

CROSS SECTIONS 1" = 5'

PROJECT NAME & NUMBER	TYPE	PAVEMENT AREA
GRANVILLE S 157 (7)	DBL TACK COAT	1389 SY.

**RECORD PLANS**

**MATERIALS**

SUB-BASE OF GRAVEL LOCAL	CEMENT LONE STAR MILL, HUDSON, N.Y.
BIT CONC. MUNICIPAL PLANT BURLINGTON	CONC. AGG. LASS CORP PLANT, WAITSFIELD
TAR BARRETT CO., WORCESTER, MASS.	GUARD RAIL AM. STEEL & WIRE CO., NEW HAVEN, CONN.
REINFC STEEL T. RYERSON & SONS, CAMBRIDGE, MASS.	

CONTRACTOR A.G. ANDERSON, SO. BARRE, VT.	CONTRACT DATED FEB. 27, 1953
RES. ENGINEER J.R. JENNINGS & A.B. DELAND	CONTRACT STARTED MAY 11, 1953
INSPECTOR	CONTRACT COMPLETED NOV. 4, 1953
RECORD PLANS F. R. ROUND	CONTRACT ACCEPTED NOV. 4, 1953

THESE PLANS ARE SUBJECT TO SUCH REVISIONS AS MAY BE REQUIRED BY THE BUREAU OF PUBLIC ROADS OR THE COMMISSIONER OF HIGHWAYS.

CONSTRUCTION IS TO BE CARRIED ON IN ACCORDANCE WITH THE PLANS AND THE STANDARD ROAD AND BRIDGE SPECIFICATIONS OF 1948, AS APPROVED JULY 25 1949 BY THE BUREAU OF PUBLIC ROADS INCLUDING ALL SUBSEQUENT APPROVED REVISIONS AND SUCH REVISED SPECIFICATIONS AND SPECIAL PROVISIONS AS ARE SUBMITTED WITH THE PLANS.

DEPARTMENT OF COMMERCE  
BUREAU OF PUBLIC ROADS

RECOMMENDED FOR APPROVAL

DISTRICT ENGINEER DATE

APPROVED

DIVISION ENGINEER DATE

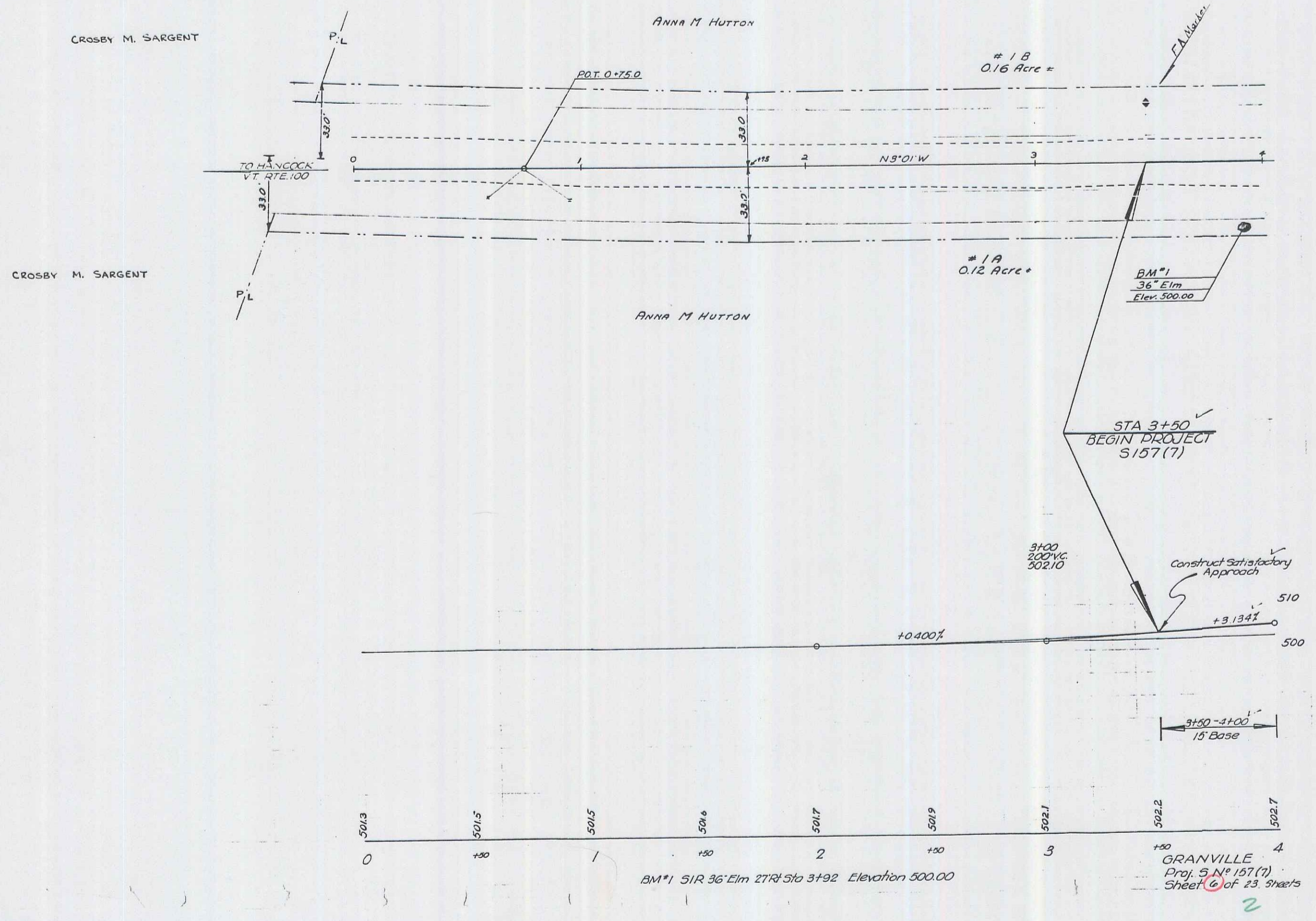
PROJECT S NO. 157 (7) FILED  
SHEET 1 OF 23

APPROVED: *12-15-52*  
*F. R. Round*  
CHIEF ENGINEER

APPROVED: *12-17-52*  
*H. S. August*  
HIGHWAY ENGINEER

APPROVED: *12-16-1952*  
*G. S. Perkins*  
DISTRICT ENGINEER

Plan	Inset Date	Grantor	Grantee	Record Book	Page	Date	Remarks
#1 A, B	W.D.C.E. 1-16-53	Anna M. Hutton	St. of Vt.	Granville	20	299	1-26-53 Sec Sheet 7



510  
500

BM#1 51R 36" Elm 27R Sta 3+92 Elevation 500.00

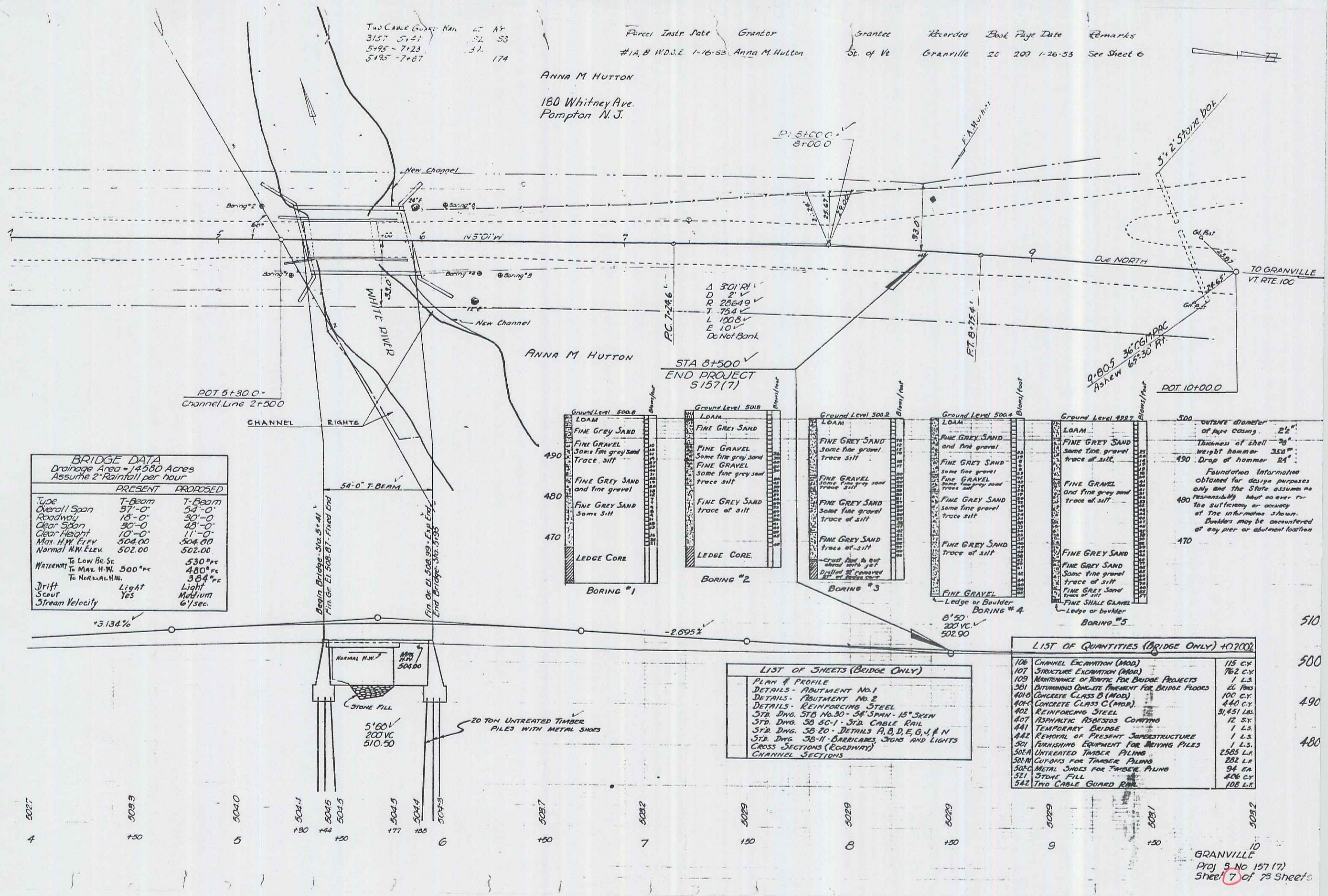
GRANVILLE  
Proj. S.N. 157(7)  
Sheet (6) of 23 sheets

2

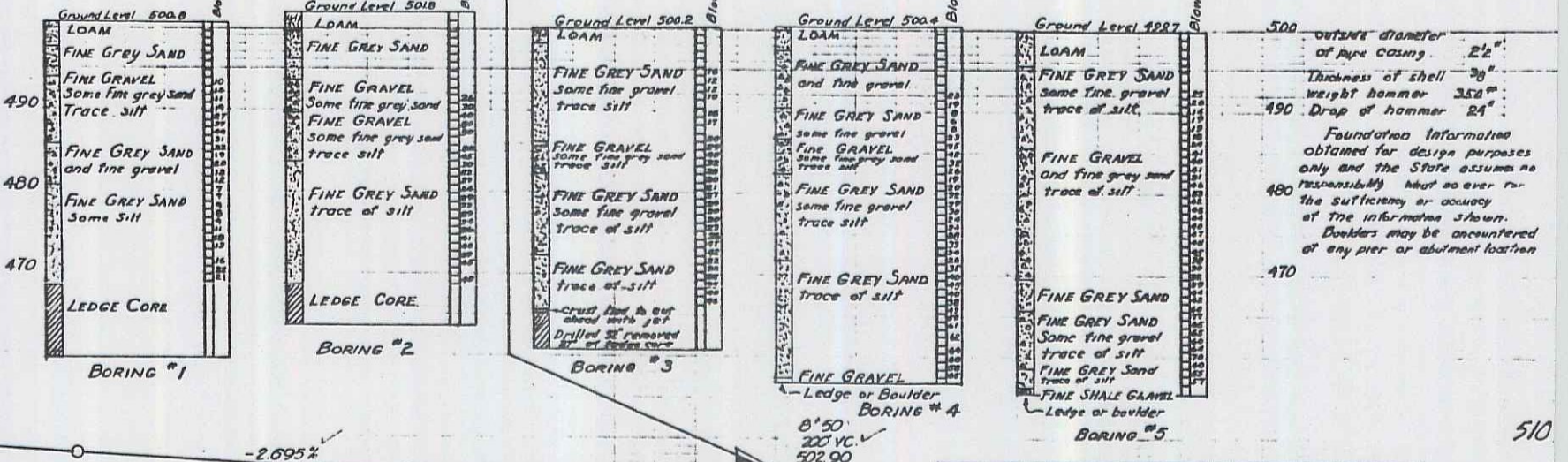
Two Cable Guard Rail 15' AF  
 3157-5741 32 53  
 5484-7423 33 174  
 5485-7487

Parcel Instr Date Grantor Grantee Recorded Book Page Date Remarks  
 #1A, B W.D.E. 1-16-53 Anna M. Hutton St. of Vt GRANVILLE 20 203 1-26-53 See Sheet 6

ANNA M. HUTTON  
 180 Whitney Ave.  
 Pompton N.J.



BRIDGE DATA		
Drainage Area = 14580 Acres		
Assume 2" Rainfall per hour		
	PRESENT	PROPOSED
Type	T-Beam	T-Beam
Overall Span	57'-0"	54'-0"
Roadway	18'-0"	30'-0"
Clear Span	32'-0"	43'-0"
Clear Height	10'-0"	11'-0"
Max. H.W. Elev	504.00	504.00
Normal H.W. Elev	502.00	502.00
Waterway To Low Br. St.	530'±	530'±
To Max. H.W.	500'±	480'±
To Normal H.W.	304'±	304'±
Drift	Light	Medium
Scour	Yes	
Stream Velocity		67 sec.



LIST OF QUANTITIES (BRIDGE ONLY) +102002		
106	CHANNEL EXCAVATION (MOB)	115 CY
107	STRUCTURE EXCAVATION (MOB)	762 C.Y.
109	MAINTENANCE OF ROUTE FOR BRIDGE PROJECTS	1 L.S.
301	CONTINUOUS CONCRETE FINISHMENT FOR BRIDGE FLOORS	26 SQ. YD.
400	CONCRETE CLASS B (MOB)	100 CY
401	CONCRETE CLASS C (MOB)	440 C.Y.
402	REINFORCING STEEL	31,451 LBS.
407	ASPHALTIC FIBERGLASS CURBING	12 SY.
441	TEMPORARY BRIDGE	1 L.S.
442	REMOVAL OF PRESENT SUPERSTRUCTURE	1 L.S.
501	FURNISHING EQUIPMENT FOR DRIVING PILES	1 L.S.
502A	UNTREATED TIMBER PILING	2505 L.F.
502B	CUTTING FOR TIMBER PILING	252 L.F.
502C	METAL SHOES FOR TIMBER PILING	94 EA.
511	STONE FILL	406 C.Y.
542	TWO CABLE GUARD RAIL	106 L.F.

LIST OF SHEETS (BRIDGE ONLY)	
PLAN & PROFILE	
DETAILS - ABUTMENT NO. 1	
DETAILS - ABUTMENT NO. 2	
DETAILS - REINFORCING STEEL	
STR. DING. 30-20 - 34' SPAN - 15' SKEN	
STR. DING. 30-20 - DETAILS A, B, D, E, G, J & N	
STR. DING. 30-11 - BRICKWORK, SIGNS AND LIGHTS	
CROSS SECTIONS (ROADWAY)	
CHANNEL SECTIONS	

GRANVILLE  
 PROJ. 5-NO 157 (7)  
 SHEET 7 OF 75 SHEETS

3