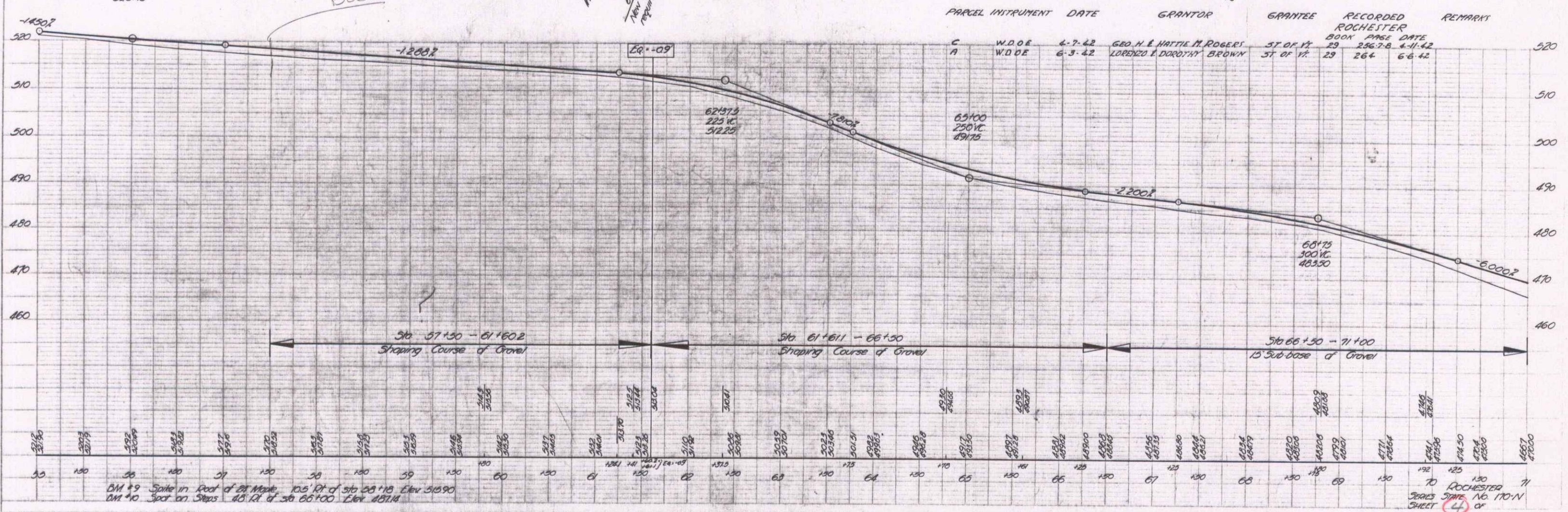
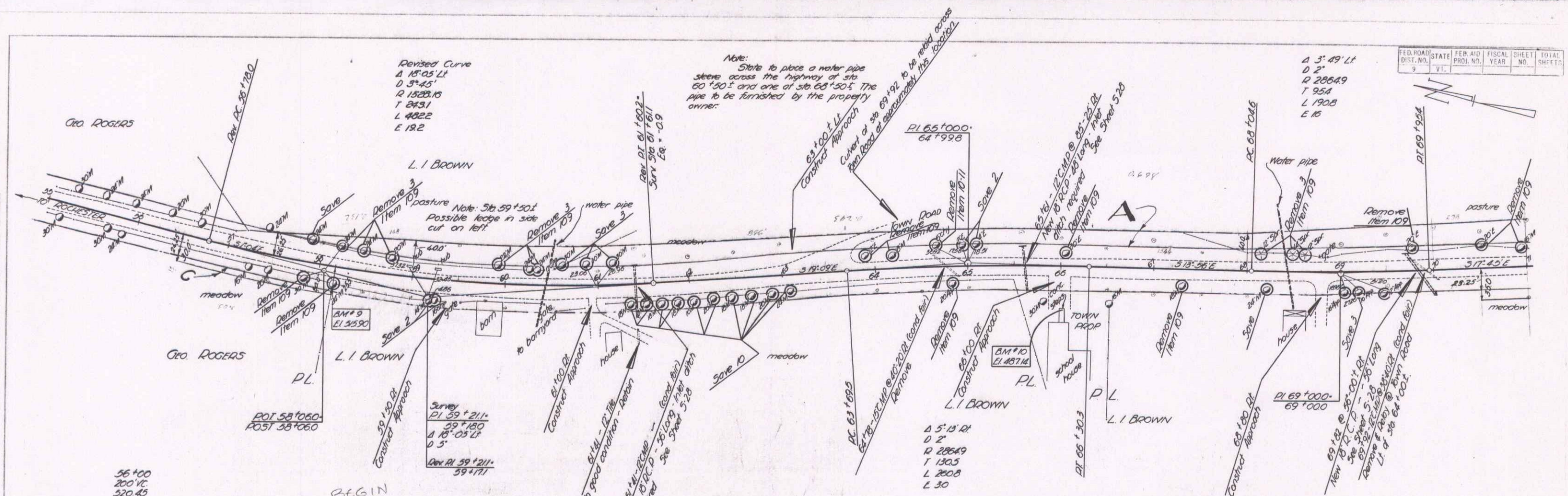


DATE: 1/14/42  
 DRAWN BY: L. L. LOWN  
 CHECKED BY: L. L. LOWN

DATE: 1/14/42  
 DRAWN BY: L. L. LOWN  
 CHECKED BY: L. L. LOWN



DM #9 Stake in Road of 28' Mark, 105' Pt of Sta 66+100 Elev 461.14  
 DM #10 Stake on Steps 45' Pt of Sta 66+100 Elev 461.14

TO ROCHESTER 11  
 SHEET NO. 170-N  
 SHEET 4