

INDEX OF SHEETS

SHEET NO.	TITLE PAGE
2	TYPICAL CROSS-SECTION OF IMPROVEMENT - GRAVEL SURFACE COURSE (STABILIZED)
3	BANKING & WIDENING TABLES
4-5	PLAN & PROFILE SHEETS
6	STANDARD STRUCTURE SHEET 5-28 (Pipe Culverts)
7	" " " " 5-30 (Guard Rail)
8	" " " " 5B-11 (Barricades, Signs & Lights)
9-19	CROSS-SECTIONS

STANDARD SHEET 5-28 APPROVED BY THE CHIEF ENGINEER ON JULY 14, 1933.
STANDARD SHEET 5-30 APPROVED BY THE CHIEF ENGINEER ON AUGUST 15, 1933.

STATE OF VERMONT
STATE HIGHWAY DEPARTMENT
PLAN AND PROFILE OF PROPOSED STATE HIGHWAY

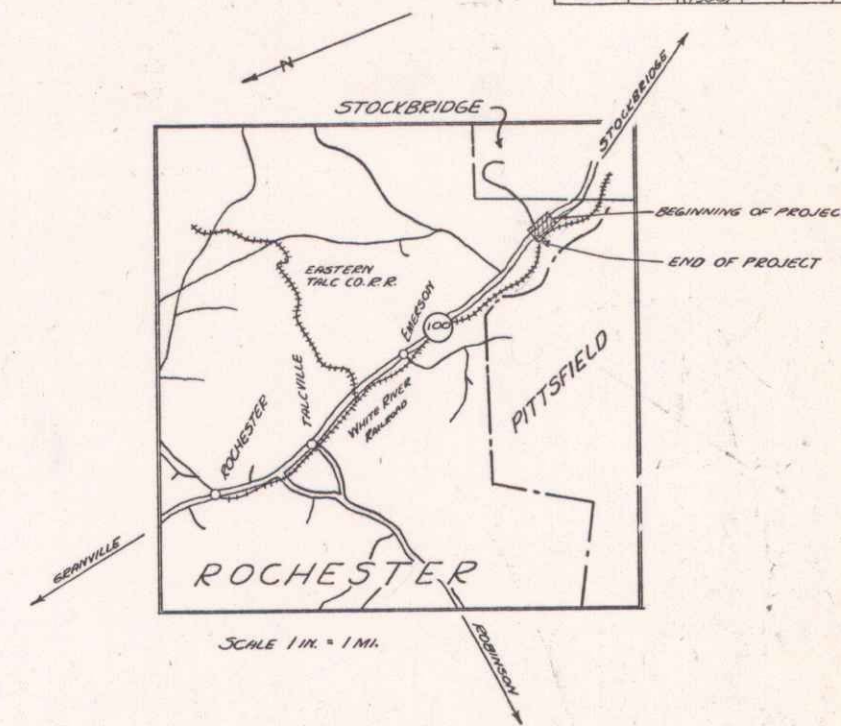
NATIONAL RECOVERY SECONDARY PROJECT

TOWN OF ROCHESTER

ROCHESTER - STOCKBRIDGE ROAD
BEGINNING AT A POINT 1904 FT. NORTHERLY FROM THE ROCHESTER-STOCKBRIDGE TOWN LINE AND CONTINUING NORTHERLY 0.233 MILES TO A 7 X 5 CONCRETE BOX CULVERT

LENGTH OF PROJECT 1232.7 FT. = 0.233 MI.

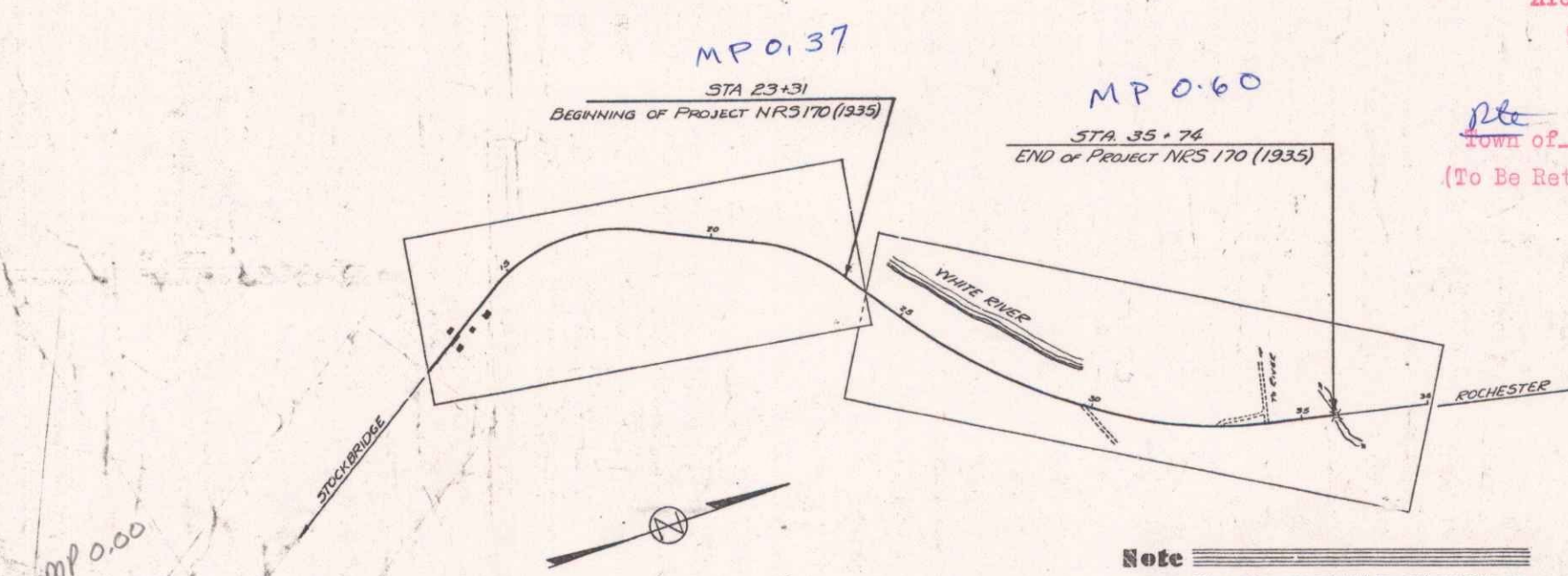
PROJ. ROAD DIST. NO.	STATE	N.A.S. PROJ. NO.	FISCAL YEAR	SHEET NO.	TOTAL SHEETS
9	VT.	170	1935	1	19



RIGHT-OF-WAY DIVISION
TOWN FILE

PERPETUAL

Town of Utica
(To Be Returned To R.O.W. Division)



APPROVED: JAN. 21, 1935
W. S. Langan
COMMISSIONER OF HIGHWAYS
SUBMITTED BY ORDER OF THE STATE HIGHWAY BOARD

Note
These plans are subject to such revisions as may be required by the Bureau of Public Roads and the Commissioner of Highways.
Construction is to be carried on in accordance with the plans and standard road and bridge specifications of 1930 including all subsequent approved revisions, the National Recovery Act special provisions, and such revised specifications and special provisions as are submitted with the plans.

SCALES

TITLE	1" = 200 FT.
PLANS	1" = 50 FT.
PROFILL	1" = 50 FT.
VERT.	1" = 10 FT.
CROSS SECTIONS	1" = 5 FT.

ROUTE: VT 100
PIN: 20864
PROJECT #: NRS 170 (1935)

CONVENTIONAL SIGNS

COUNTY LINE	GROUND ELEVATION
TOWN LINE	FENCE LINE
STONE WALL	UNFENCED PROPERTY
GUARD RAIL	TRAVELED WAY
RAILROAD	RETAINING WALL
CENTER LINE	SURVEY LINE
CULVERT	DROP INLET
TROLLEY POLE	POWER POLE
TELEPHONE POLE	TREES
HEDGE	

CURVE DATA

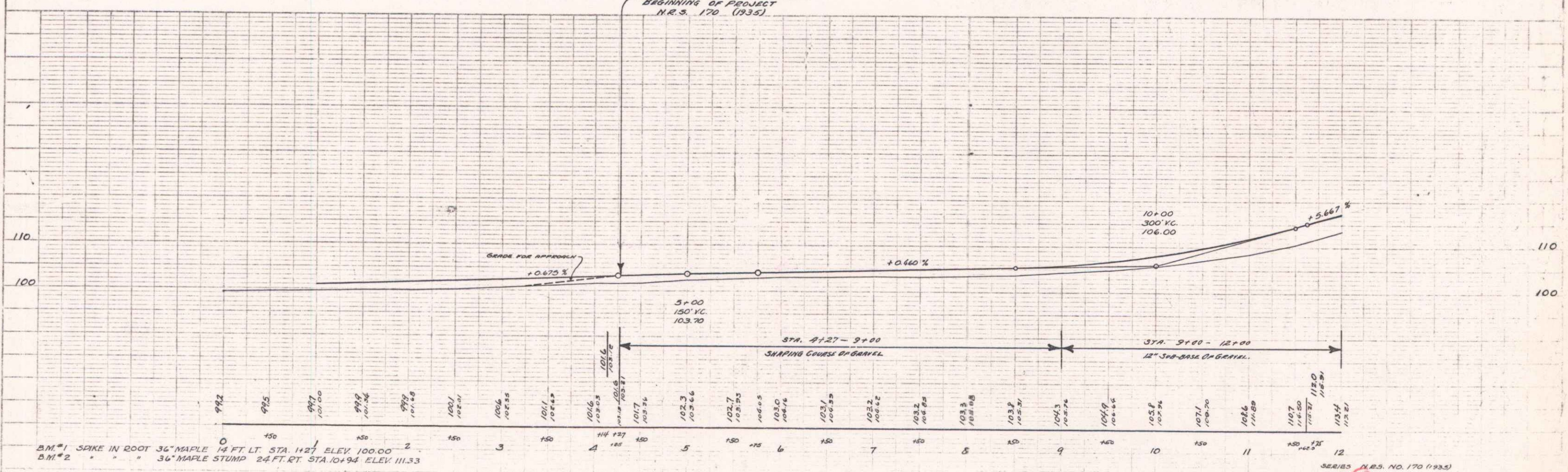
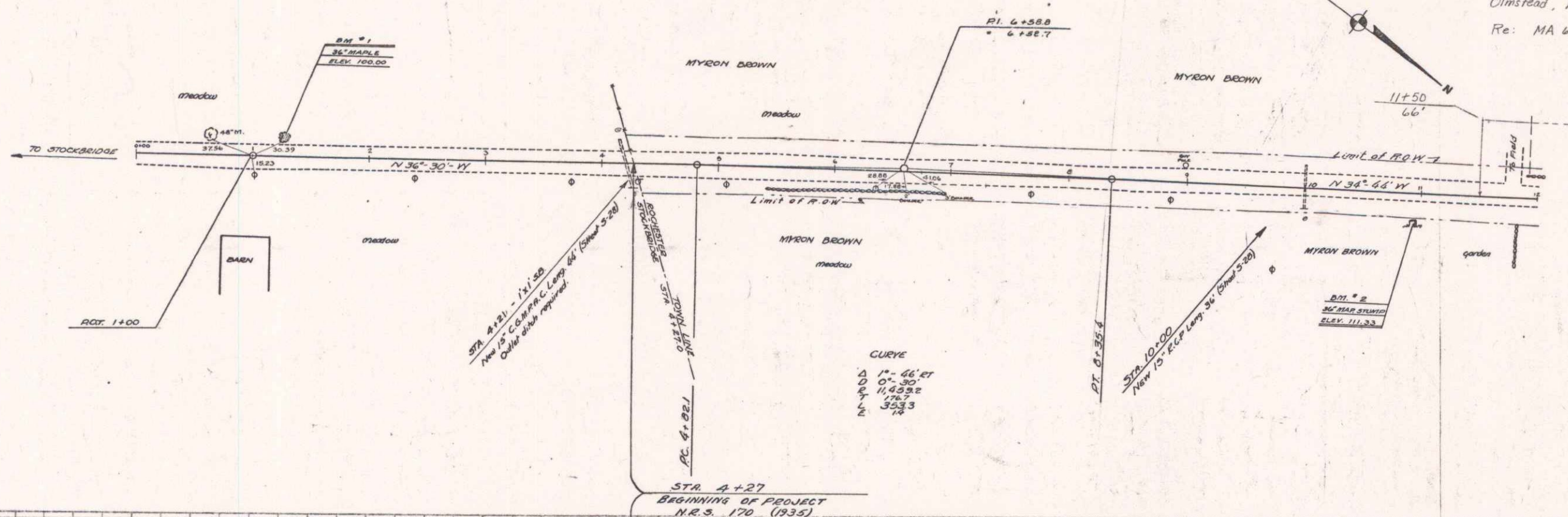
DEFLECTION ANGLE	Δ
DEGREE OF CURVE	D
RADIUS OF CURVE	R
TANGENT DISTANCE	T
LENGTH OF CURVE	L
EXTERNAL DISTANCE	E
POINT OF INTERSECTION	P. I.
POINT OF CURVE	P. C.
POINT OF TANGENT	P. T.
POINT ON TANGENT	P.O.T.

CORRECTED: Jan 2, 1934
W. S. Langan
ROAD ENGINEER
SERIES NRS No. 170 (1935) FILED
SHEET 1 OF 19

DIST. # 4 PLANS

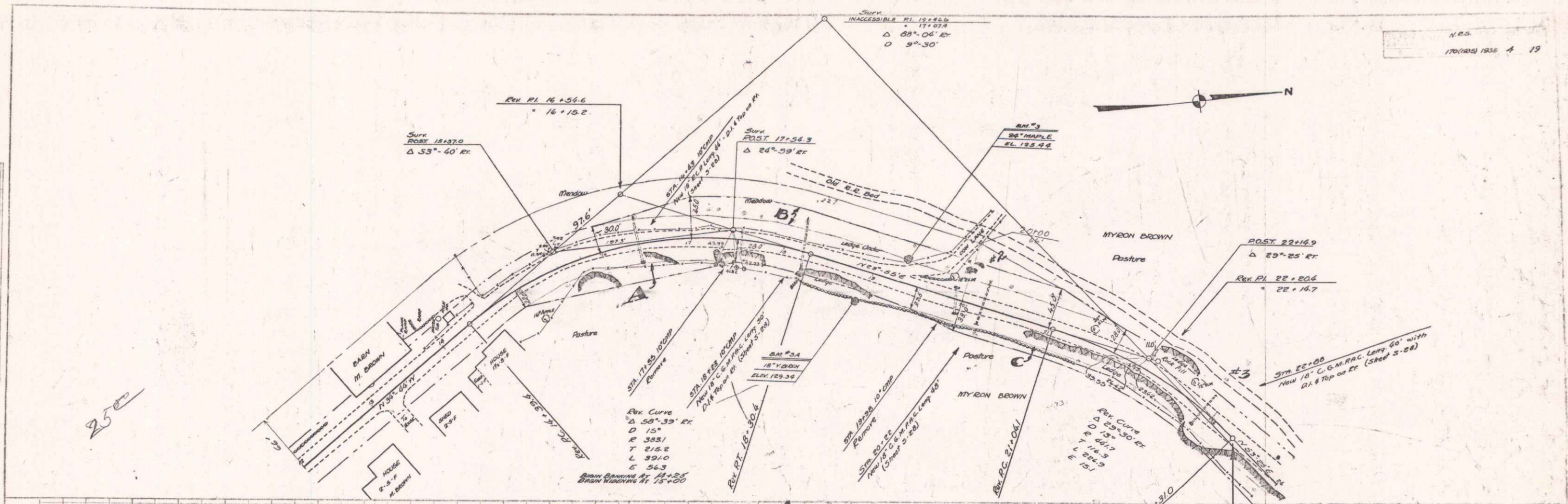
N.E.S.
1700933 1935 4 25

Purchased From Frederick F. Lillians.
Olmstead, Aug. 27, 1967. Warranty Deed.
Re: MA 654/65 - 25.31 Dist. 4

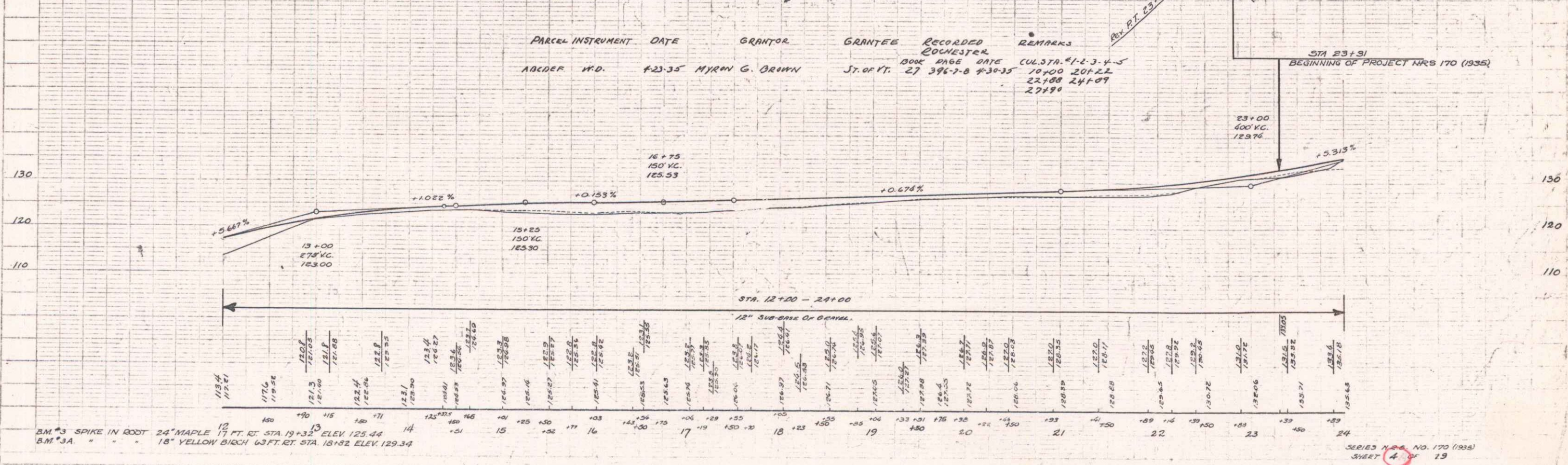


B.M. #1 SPIKE IN ROOT 36" MAPLE 14 FT LT. STA. 1+27 ELEV. 100.00
B.M. #2 " " " " 36" MAPLE STUMP 24 FT. RT. STA. 10+94 ELEV. 111.33

SERIES N.E.S. NO. 170 (1935)
SHEET 4 OF 25



PARCEL	INSTRUMENT	DATE	GRANTOR	GRANTEE	RECORDED	REMARKS
ACDER	W.D.	8-23-35	MYRON G. BROWN	ST. OF VT.	BOOK PAGE DATE 27 396-2-8 4-30-35	CUL. STA. 4+12.3-4-5 19+00 20+22 22+00 24+09 27+90



B.M. #3 SPIKE IN ROOT 24" MAPLE 17 FT. RT. STA. 19+32 ELEV. 125.44
 B.M. #3A " " 18" YELLOW BIRCH 63 FT. RT. STA. 18+92 ELEV. 129.34

