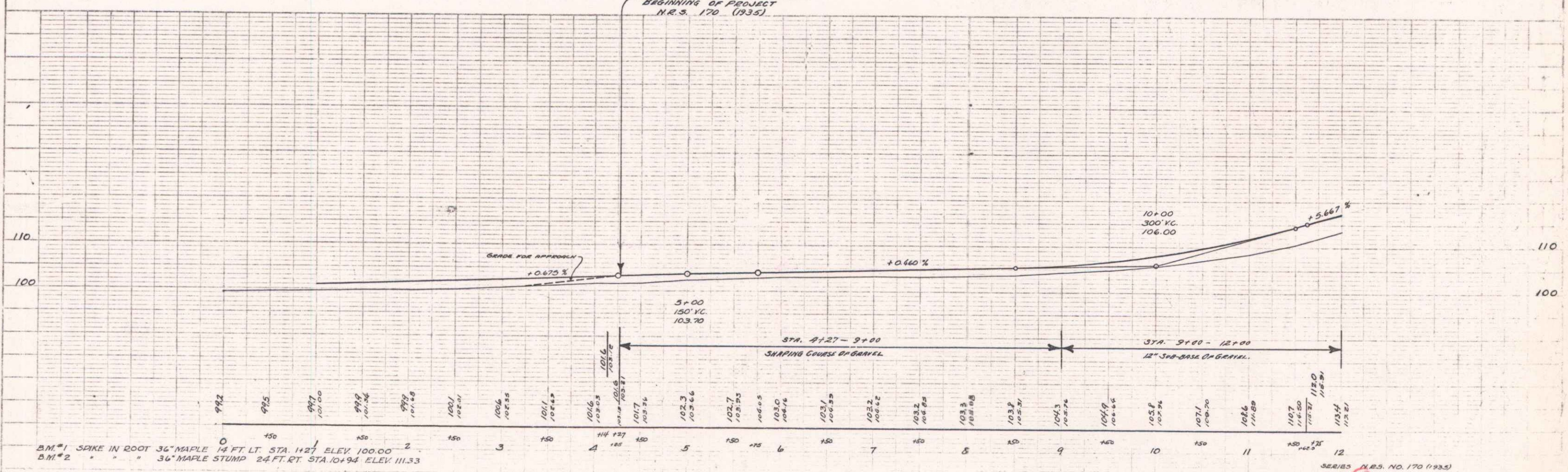
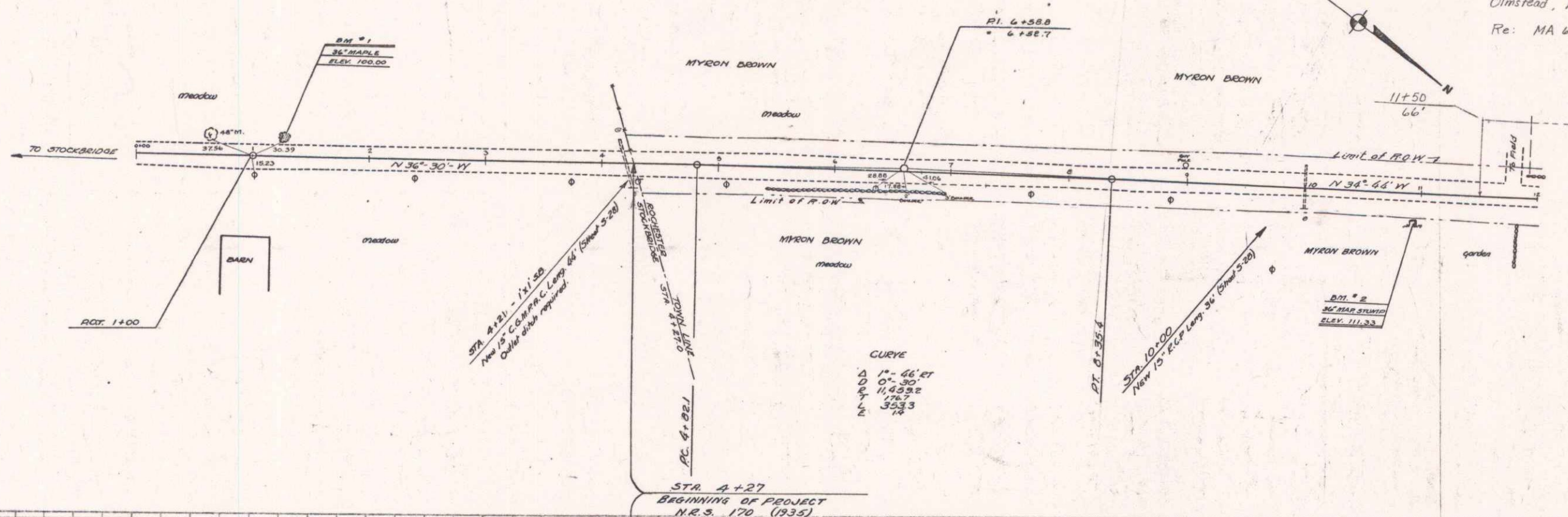


N.E.S.  
1700933 1935 4 25

Purchased From Frederick F. Lillians.  
Olmstead, Aug. 27, 1967. Warranty Deed.  
Re: MA 654/65 - 25.31 Dist. 4



B.M.#1 SPIKE IN ROOT 36" MAPLE 14 FT LT. STA. 1+27 ELEV. 100.00  
B.M.#2 " " " 36" MAPLE STUMP 24 FT. RT. STA. 10+94 ELEV. 111.33

SERIES N.E.S. NO. 170 (1935)  
SHEET 4 OF 25