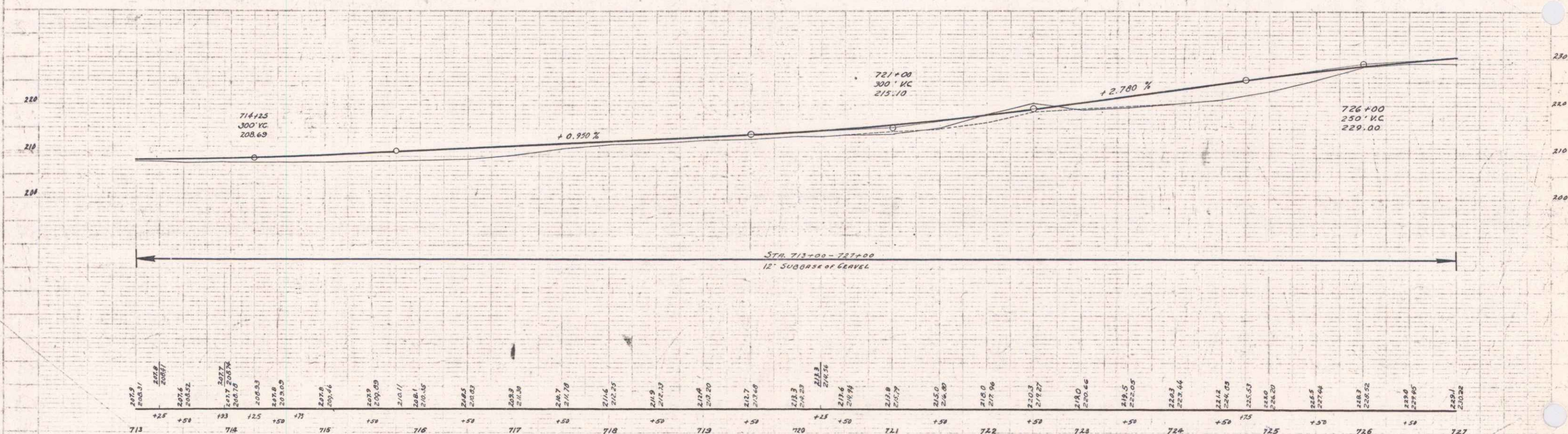
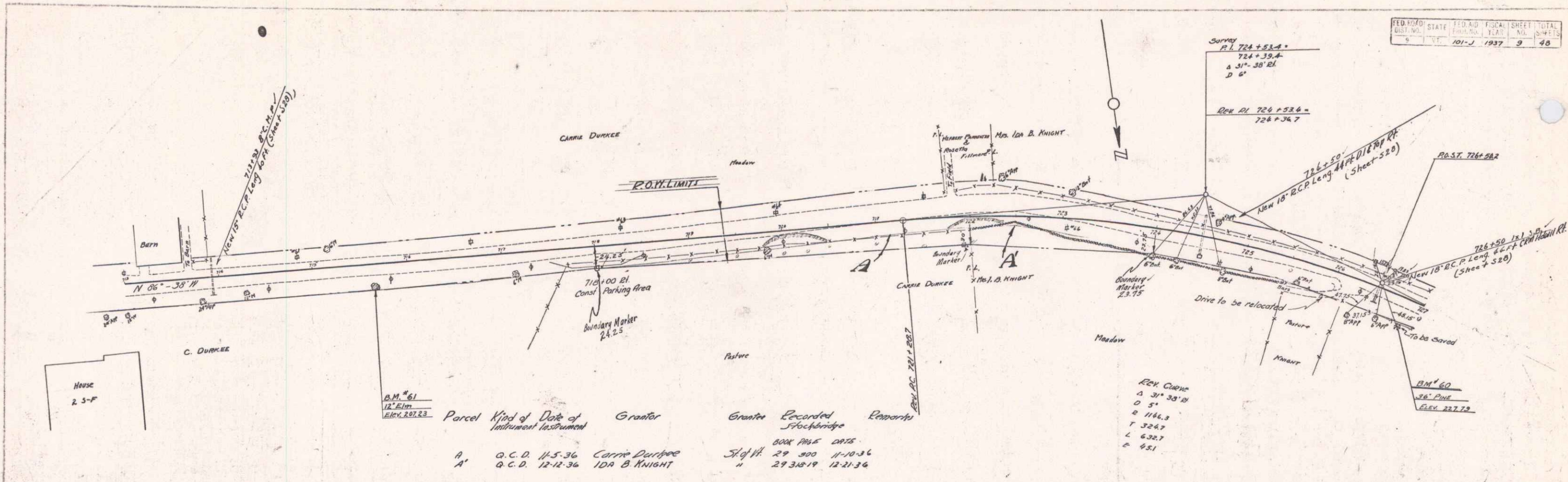


PLAN
 CONE
 7/19/37



B.M. #61 SPIKE IN ROOT OF 12" ELM 21 FT. W. OF STA. 715+66 ELEV. 207.23
 B.M. #60 SPIKE IN ROOT OF 36" PINE 31 FT. RT. OF STA. 726+84 ELEV. 227.79

6