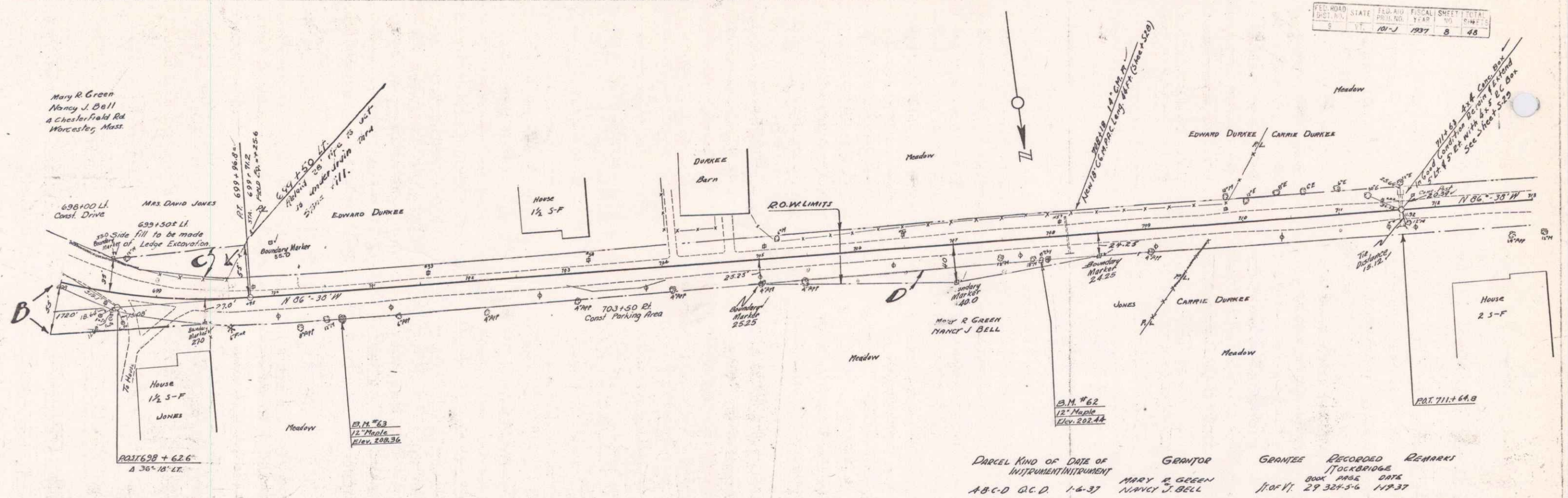
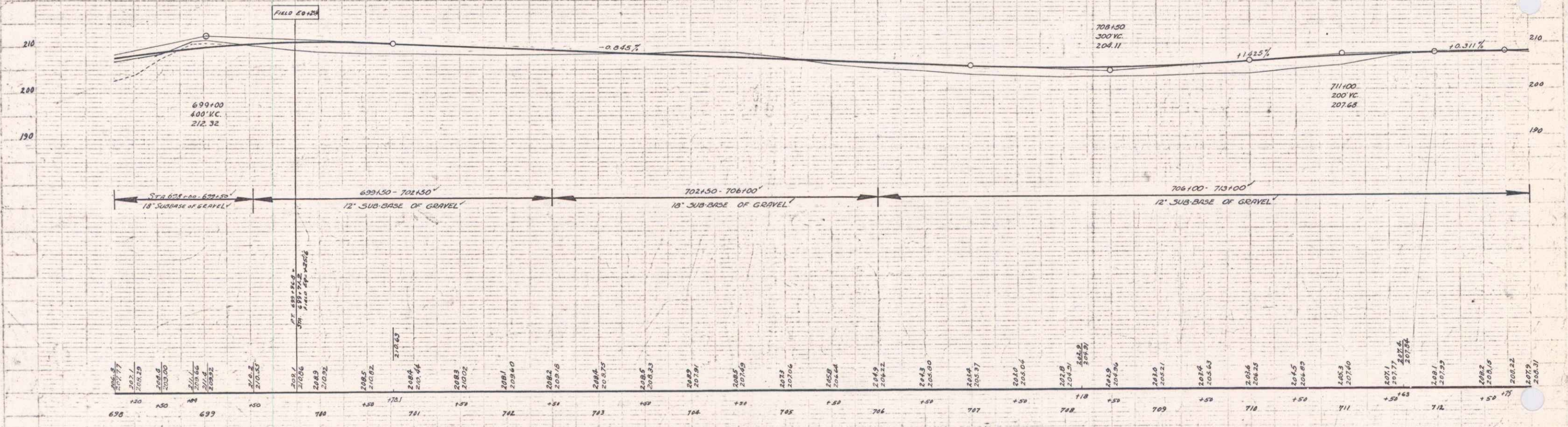


PUTNAM  
 CONE  
 1/4" = 40' HORIZ  
 1" = 10' VERT  
 TRACED



PUTNAM  
 CONE  
 1/4" = 40' HORIZ  
 1" = 10' VERT



B.M. #63 SPIKE IN ROOT OF 12" MAPLE 26 FT. RT. OF STA. 700+65 ELEV. 208.36  
 B.M. #62 SPIKE IN ROOT OF 12" MAPLE 21 FT. RT. OF STA. 707+91 ELEV. 202.44