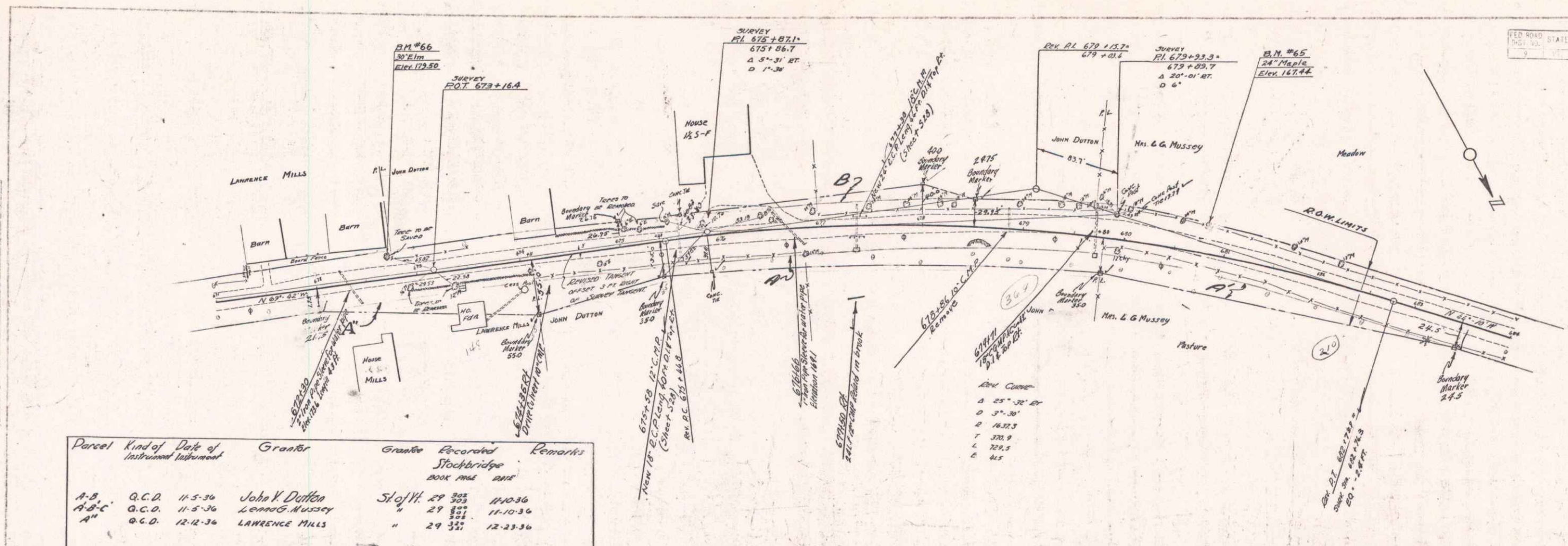
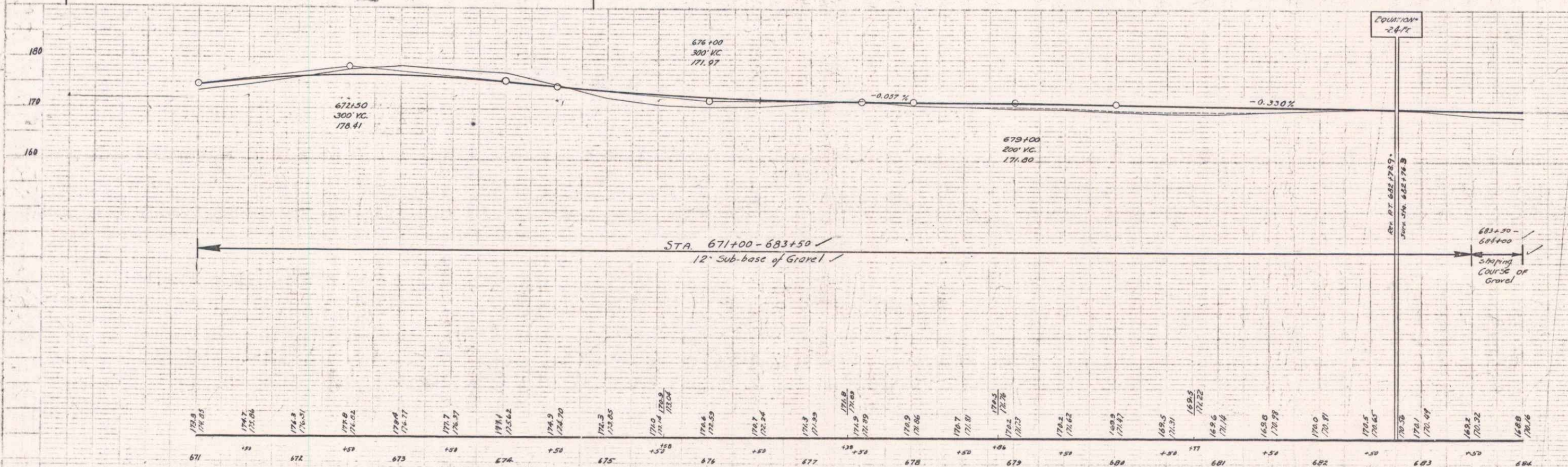


For  
1935  
CONV.  
TRAFFIC  
CONV.



Parcel	Kind of	Date of	Grantor	Grantor	Recorded	Remarks
					Stockbridge	
A-B	Q.C.D.	11-5-36	John V. Dutton	St. of H.	29 305	11-10-36
A-B-C	Q.C.D.	11-5-36	Lennox G. Mussey	"	29 305	11-10-36
A"	Q.C.D.	12-12-36	LAWRENCE MILLS	"	29 305	12-23-36



B.M. #66 SPIKE IN FOOT OF 30' ELM 10 FT. LT. OF STA. 672+72 ELEV. 179.50  
 B.M. #65 SPIKE IN FOOT OF 24' MAPLE 25 FT. LT. OF STA. 680+84 ELEV. 147.44